

TEST REPORT

Report No.: WD2018010041EN

Date: Jan. 31, 2018

Page: 1 / 53

Applicant:

Address:

The following merchandise was (were) submitted and identified by client as:

Sample Name: Electric Fan
Main Model: YF-ST1627 and Fans parts
Other Model: Please refer to next page(s)
Sample Received Date: Jan. 02, 2018
Completed Date: Jan. 31, 2018

Test Result(s): Please refer to next page(s).

Test Requested and Conclusion(s):

No.	Test Sample	Standard and Requirement	Conclusion(s)
1	Tested materials of submitted samples	RoHS Directive 2011/65/EU and its subsequent amendments	PASS
2	Tested materials of submitted samples	RoHS Directive 2011/65/EU and its Commission delegated Directive (EU) 2015/863 - Phthalates	PASS

Edited by: *Maggie Yang*

Reviewed by: *phoebe Zhang*

Approved by: *Andy zhu*

This Test Report is issued by the company subject to its General Conditions of Service printed overleaf. Attention is drawn to the limitations of liability, jurisdictional issues defined therein. The results shown in this test report refer only to the sample(s) tested unless otherwise stated. This Test Report cannot be reproduced except in full, without prior written permission of the company. Items marked with "n" or "m" means they are not accredited by CNAS or CMA, "s" means the item's subcontractor is not accredited by CNAS or CMA.

GUANGDONG WONDER TESTING INTERNATIONAL CO., LTD.

No. 221 Jianshebei Road Huadu District, Guangzhou City, Guangdong Province, China, E-mail: wd@wdwonder.com Tel: 86-020-8689 0001 Fax: 86-020-8689 6998 Website: http://www.wdwonder.com



TEST REPORT

Report No.: WD2018010041EN

Date: Jan. 31, 2018

Page: 2 / 53

Test Result(s):

RoHS - Lead (Pb)/Cadmium(Cd)/Mercury(Hg)/Hexavalent Chromium(Cr⁶⁺)/PBBs/PBDEs

Method: With reference to IEC 62321-3-1: 2013/ IEC 62321-4&5: 2013/ IEC 62321-6: 2015/ IEC 62321-7-1: 2015/ IEC 62321:2008, analyzed by EDXRF & ICP-AES & GC-MS & UV-Vis.

Material No.	Substances	EDXRF Result *	Chemical Result #(mg/kg)	Conclusion
1	Pb	BL	--	PASS
	Cd	BL	--	PASS
	Hg	BL	--	PASS
	Cr ⁶⁺	BL	--	PASS
	PBBs	BL	--	PASS
	PBDEs		--	PASS
2	Pb	BL	--	PASS
	Cd	BL	--	PASS
	Hg	BL	--	PASS
	Cr ⁶⁺	BL	--	PASS
	PBBs	BL	--	PASS
	PBDEs		--	PASS
3	Pb	BL	--	PASS
	Cd	BL	--	PASS
	Hg	BL	--	PASS
	Cr ⁶⁺	BL	--	PASS
	PBBs	--	--	NA
	PBDEs		--	NA
4	Pb	BL	--	PASS
	Cd	BL	--	PASS
	Hg	BL	--	PASS
	Cr ⁶⁺	BL	--	PASS
	PBBs	BL	--	PASS
	PBDEs		--	PASS
5	Pb	BL	--	PASS
	Cd	BL	--	PASS
	Hg	BL	--	PASS
	Cr ⁶⁺	BL	--	PASS
	PBBs	BL	--	PASS
	PBDEs		--	PASS

This Test Report is issued by the company subject to its General Conditions of Service printed overleaf. Attention is drawn to the limitations of liability, indemnification and jurisdictional issues defined therein. The results shown in this test report refer only to the sample(s) tested unless otherwise stated. This Test Report cannot be reproduced, except in full, without prior written permission of the company. Items marked with "n" or "m" means they are not accredited by CNAS or CMA, "s" means the item of subcontractor is not accredited by CNAS or CMA.

TEST REPORT

Report No.: WD2018010041EN

Date: Jan. 31, 2018

Page: 3 / 53

Test Result(s):

Material No.	Substances	EDXRF Result *	Chemical Result #(mg/kg)	Conclusion
6	Pb	BL	--	PASS
	Cd	BL	--	PASS
	Hg	BL	--	PASS
	Cr ⁶⁺	BL	--	PASS
	PBBs	BL	--	PASS
	PBDEs		--	PASS
7	Pb	BL	--	PASS
	Cd	BL	--	PASS
	Hg	BL	--	PASS
	Cr ⁶⁺	BL	--	PASS
	PBBs	BL	--	PASS
	PBDEs		--	PASS
8	Pb	BL	--	PASS
	Cd	BL	--	PASS
	Hg	BL	--	PASS
	Cr ⁶⁺	BL	--	PASS
	PBBs	--	--	NA
	PBDEs		--	NA
9	Pb	BL	--	PASS
	Cd	BL	--	PASS
	Hg	BL	--	PASS
	Cr ⁶⁺	BL	--	PASS
	PBBs	BL	--	PASS
	PBDEs		--	PASS
10	Pb	BL	--	PASS
	Cd	BL	--	PASS
	Hg	BL	--	PASS
	Cr ⁶⁺	BL	--	PASS
	PBBs	BL	--	PASS
	PBDEs		--	PASS

This Test Report is issued by the company subject to its General Conditions of Service printed overleaf. Attention is drawn to the limitations of liability, indemnification and jurisdictional issues defined therein. The results shown in this test report refer only to the sample(s) tested unless otherwise stated. This Test Report cannot be reproduced, except in full, without prior written permission of the company. Items marked with "n" or "m" means they are not accredited by CNAS or CMA, "s" means the item of subcontractor is not accredited by CNAS or CMA.

TEST REPORT

Report No.: WD2018010041EN

Date: Jan. 31, 2018

Page: 4 / 53

Test Result(s):

Material No.	Substances	EDXRF Result *	Chemical Result #(mg/kg)	Conclusion
11	Pb	BL	--	PASS
	Cd	BL	--	PASS
	Hg	BL	--	PASS
	Cr ⁶⁺	BL	--	PASS
	PBBs	--	--	NA
	PBDEs		--	NA
12	Pb	BL	--	PASS
	Cd	BL	--	PASS
	Hg	BL	--	PASS
	Cr ⁶⁺	BL	--	PASS
	PBBs	--	--	NA
	PBDEs		--	NA
13	Pb	BL	--	PASS
	Cd	BL	--	PASS
	Hg	BL	--	PASS
	Cr ⁶⁺	BL	--	PASS
	PBBs	BL	--	PASS
	PBDEs		--	PASS
14	Pb	BL	--	PASS
	Cd	BL	--	PASS
	Hg	BL	--	PASS
	Cr ⁶⁺	BL	--	PASS
	PBBs	BL	--	PASS
	PBDEs		--	PASS
15	Pb	BL	--	PASS
	Cd	BL	--	PASS
	Hg	BL	--	PASS
	Cr ⁶⁺	BL	--	PASS
	PBBs	BL	--	PASS
	PBDEs		--	PASS

This Test Report is issued by the company subject to its General Conditions of Service printed overleaf. Attention is drawn to the limitations of liability, indemnification and jurisdictional issues defined therein. The results shown in this test report refer only to the sample(s) tested unless otherwise stated. This Test Report cannot be reproduced, except in full, without prior written permission of the company. Items marked with "n" or "m" means they are not accredited by CNAS or CMA, "s" means the item of subcontractor is not accredited by CNAS or CMA.

TEST REPORT

Report No.: WD2018010041EN

Date: Jan. 31, 2018

Page: 5 / 53

Test Result(s):

Material No.	Substances	EDXRF Result *	Chemical Result #(mg/kg)	Conclusion
16	Pb	BL	--	PASS
	Cd	BL	--	PASS
	Hg	BL	--	PASS
	Cr ⁶⁺	BL	--	PASS
	PBBs	BL	--	PASS
	PBDEs		--	PASS
17	Pb	BL	--	PASS
	Cd	BL	--	PASS
	Hg	BL	--	PASS
	Cr ⁶⁺	BL	--	PASS
	PBBs	BL	--	PASS
	PBDEs		--	PASS
18	Pb	BL	--	PASS
	Cd	BL	--	PASS
	Hg	BL	--	PASS
	Cr ⁶⁺	BL	--	PASS
	PBBs	BL	--	PASS
	PBDEs		--	PASS
19	Pb	BL	--	PASS
	Cd	BL	--	PASS
	Hg	BL	--	PASS
	Cr ⁶⁺	BL	--	PASS
	PBBs	BL	--	PASS
	PBDEs		--	PASS
20	Pb	BL	--	PASS
	Cd	BL	--	PASS
	Hg	BL	--	PASS
	Cr ⁶⁺	BL	--	PASS
	PBBs	--	--	NA
	PBDEs		--	NA

This Test Report is issued by the company subject to its General Conditions of Service printed overleaf. Attention is drawn to the limitations of liability, indemnification and jurisdictional issues defined therein. The results shown in this test report refer only to the sample(s) tested unless otherwise stated. This Test Report cannot be reproduced, except in full, without prior written permission of the company. Items marked with "n" or "m" means they are not accredited by CNAS or CMA, "s" means the item of subcontractor is not accredited by CNAS or CMA.

TEST REPORT

Report No.: WD2018010041EN

Date: Jan. 31, 2018

Page: 6 / 53

Test Result(s):

Material No.	Substances	EDXRF Result *	Chemical Result #(mg/kg)	Conclusion
21	Pb	BL	--	PASS
	Cd	BL	--	PASS
	Hg	BL	--	PASS
	Cr ⁶⁺	BL	--	PASS
	PBBs	--	--	NA
	PBDEs		--	NA
22	Pb	BL	--	PASS
	Cd	BL	--	PASS
	Hg	BL	--	PASS
	Cr ⁶⁺	BL	--	PASS
	PBBs	BL	--	PASS
	PBDEs		--	PASS
23	Pb	BL	--	PASS
	Cd	BL	--	PASS
	Hg	BL	--	PASS
	Cr ⁶⁺	BL	--	PASS
	PBBs	--	--	NA
	PBDEs		--	NA
24	Pb	BL	--	PASS
	Cd	BL	--	PASS
	Hg	BL	--	PASS
	Cr ⁶⁺	BL	--	PASS
	PBBs	--	--	NA
	PBDEs		--	NA
25	Pb	BL	--	PASS
	Cd	BL	--	PASS
	Hg	BL	--	PASS
	Cr ⁶⁺	BL	--	PASS
	PBBs	BL	--	PASS
	PBDEs		--	PASS

This Test Report is issued by the company subject to its General Conditions of Service printed overleaf. Attention is drawn to the limitations of liability, indemnification and jurisdictional issues defined therein. The results shown in this test report refer only to the sample(s) tested unless otherwise stated. This Test Report cannot be reproduced, except in full, without prior written permission of the company. Items marked with "n" or "m" means they are not accredited by CNAS or CMA, "s" means the item of subcontractor is not accredited by CNAS or CMA.

TEST REPORT

Report No.: WD2018010041EN

Date: Jan. 31, 2018

Page: 7 / 53

Test Result(s):

Material No.	Substances	EDXRF Result *	Chemical Result #(mg/kg)	Conclusion
26	Pb	BL	--	PASS
	Cd	BL	--	PASS
	Hg	BL	--	PASS
	Cr ⁶⁺	BL	--	PASS
	PBBs	BL	--	PASS
	PBDEs		--	PASS
27	Pb	BL	--	PASS
	Cd	BL	--	PASS
	Hg	BL	--	PASS
	Cr ⁶⁺	BL	--	PASS
	PBBs	BL	--	PASS
	PBDEs		--	PASS
28	Pb	BL	--	PASS
	Cd	BL	--	PASS
	Hg	BL	--	PASS
	Cr ⁶⁺	BL	--	PASS
	PBBs	BL	--	PASS
	PBDEs		--	PASS
29	Pb	BL	--	PASS
	Cd	BL	--	PASS
	Hg	BL	--	PASS
	Cr ⁶⁺	BL	--	PASS
	PBBs	BL	--	PASS
	PBDEs		--	PASS
30	Pb	BL	--	PASS
	Cd	BL	--	PASS
	Hg	BL	--	PASS
	Cr ⁶⁺	BL	--	PASS
	PBBs	BL	--	PASS
	PBDEs		--	PASS

This Test Report is issued by the company subject to its General Conditions of Service printed overleaf. Attention is drawn to the limitations of liability, indemnification and jurisdictional issues defined therein. The results shown in this test report refer only to the sample(s) tested unless otherwise stated. This Test Report cannot be reproduced, except in full, without prior written permission of the company. Items marked with "n" or "m" means they are not accredited by CNAS or CMA, "s" means the item of subcontractor is not accredited by CNAS or CMA.

TEST REPORT

Report No.: WD2018010041EN

Date: Jan. 31, 2018

Page: 8 / 53

Test Result(s):

Material No.	Substances	EDXRF Result *	Chemical Result #(mg/kg)	Conclusion
31	Pb	IN	367	PASS
	Cd	BL	--	PASS
	Hg	BL	--	PASS
	Cr ⁶⁺	BL	--	PASS
	PBBs	--	--	NA
	PBDEs		--	NA
32	Pb	BL	--	PASS
	Cd	BL	--	PASS
	Hg	BL	--	PASS
	Cr ⁶⁺	BL	--	PASS
	PBBs	IN	N.D.	PASS
	PBDEs		N.D.	PASS
33	Pb	BL	--	PASS
	Cd	BL	--	PASS
	Hg	BL	--	PASS
	Cr ⁶⁺	BL	--	PASS
	PBBs	BL	--	PASS
	PBDEs		--	PASS
34	Pb	BL	--	PASS
	Cd	BL	--	PASS
	Hg	BL	--	PASS
	Cr ⁶⁺	BL	--	PASS
	PBBs	--	--	NA
	PBDEs		--	NA
35	Pb	BL	--	PASS
	Cd	BL	--	PASS
	Hg	BL	--	PASS
	Cr ⁶⁺	BL	--	PASS
	PBBs	--	--	NA
	PBDEs		--	NA

This Test Report is issued by the company subject to its General Conditions of Service printed overleaf. Attention is drawn to the limitations of liability, indemnification and jurisdictional issues defined therein. The results shown in this test report refer only to the sample(s) tested unless otherwise stated. This Test Report cannot be reproduced, except in full, without prior written permission of the company. Items marked with "n" or "m" means they are not accredited by CNAS or CMA, "s" means the item of subcontractor is not accredited by CNAS or CMA.

TEST REPORT

Report No.: WD2018010041EN

Date: Jan. 31, 2018

Page: 9 / 53

Test Result(s):

Material No.	Substances	EDXRF Result *	Chemical Result #(mg/kg)	Conclusion
36	Pb	BL	--	PASS
	Cd	BL	--	PASS
	Hg	BL	--	PASS
	Cr ⁶⁺	BL	--	PASS
	PBBs	BL	--	PASS
	PBDEs		--	PASS
37	Pb	BL	--	PASS
	Cd	BL	--	PASS
	Hg	BL	--	PASS
	Cr ⁶⁺	BL	--	PASS
	PBBs	IN	N.D.	PASS
	PBDEs		N.D.	PASS
38	Pb	BL	--	PASS
	Cd	BL	--	PASS
	Hg	BL	--	PASS
	Cr ⁶⁺	BL	--	PASS
	PBBs	BL	--	PASS
	PBDEs		--	PASS
39	Pb	BL	--	PASS
	Cd	BL	--	PASS
	Hg	BL	--	PASS
	Cr ⁶⁺	BL	--	PASS
	PBBs	--	--	NA
	PBDEs		--	NA
40	Pb	BL	--	PASS
	Cd	BL	--	PASS
	Hg	BL	--	PASS
	Cr ⁶⁺	BL	--	PASS
	PBBs	BL	--	PASS
	PBDEs		--	PASS

This Test Report is issued by the company subject to its General Conditions of Service printed overleaf. Attention is drawn to the limitations of liability, indemnification and jurisdictional issues defined therein. The results shown in this test report refer only to the sample(s) tested unless otherwise stated. This Test Report cannot be reproduced, except in full, without prior written permission of the company. Items marked with "n" or "m" means they are not accredited by CNAS or CMA, "s" means the item of subcontractor is not accredited by CNAS or CMA.

TEST REPORT

Report No.: WD2018010041EN

Date: Jan. 31, 2018

Page: 10 / 53

Test Result(s):

Material No.	Substances	EDXRF Result *	Chemical Result #(mg/kg)	Conclusion
41	Pb	BL	--	PASS
	Cd	BL	--	PASS
	Hg	BL	--	PASS
	Cr ⁶⁺	BL	--	PASS
	PBBs	--	--	NA
	PBDEs		--	NA
42	Pb	BL	--	PASS
	Cd	BL	--	PASS
	Hg	BL	--	PASS
	Cr ⁶⁺	BL	--	PASS
	PBBs	BL	--	PASS
	PBDEs		--	PASS
43	Pb	BL	--	PASS
	Cd	BL	--	PASS
	Hg	BL	--	PASS
	Cr ⁶⁺	BL	--	PASS
	PBBs	--	--	NA
	PBDEs		--	NA
44	Pb	BL	--	PASS
	Cd	BL	--	PASS
	Hg	BL	--	PASS
	Cr ⁶⁺	BL	--	PASS
	PBBs	BL	--	PASS
	PBDEs		--	PASS
45	Pb	BL	--	PASS
	Cd	BL	--	PASS
	Hg	BL	--	PASS
	Cr ⁶⁺	BL	--	PASS
	PBBs	--	--	NA
	PBDEs		--	NA

This Test Report is issued by the company subject to its General Conditions of Service printed overleaf. Attention is drawn to the limitations of liability, indemnification and jurisdictional issues defined therein. The results shown in this test report refer only to the sample(s) tested unless otherwise stated. This Test Report cannot be reproduced, except in full, without prior written permission of the company. Items marked with "n" or "m" means they are not accredited by CNAS or CMA, "s" means the item of subcontractor is not accredited by CNAS or CMA.

TEST REPORT

Report No.: WD2018010041EN

Date: Jan. 31, 2018

Page: 11 / 53

Test Result(s):

Material No.	Substances	EDXRF Result *	Chemical Result #(mg/kg)	Conclusion
46	Pb	BL	--	PASS
	Cd	BL	--	PASS
	Hg	BL	--	PASS
	Cr ⁶⁺	BL	--	PASS
	PBBs	--	--	NA
	PBDEs		--	NA
47	Pb	BL	--	PASS
	Cd	BL	--	PASS
	Hg	BL	--	PASS
	Cr ⁶⁺	BL	--	PASS
	PBBs	BL	--	PASS
	PBDEs		--	PASS
48	Pb	BL	--	PASS
	Cd	BL	--	PASS
	Hg	BL	--	PASS
	Cr ⁶⁺	BL	--	PASS
	PBBs	BL	--	PASS
	PBDEs		--	PASS
49	Pb	BL	--	PASS
	Cd	BL	--	PASS
	Hg	BL	--	PASS
	Cr ⁶⁺	BL	--	PASS
	PBBs	--	--	NA
	PBDEs		--	NA
50	Pb	BL	--	PASS
	Cd	BL	--	PASS
	Hg	BL	--	PASS
	Cr ⁶⁺	BL	--	PASS
	PBBs	BL	--	PASS
	PBDEs		--	PASS

This Test Report is issued by the company subject to its General Conditions of Service printed overleaf. Attention is drawn to the limitations of liability, indemnification and jurisdictional issues defined therein. The results shown in this test report refer only to the sample(s) tested unless otherwise stated. This Test Report cannot be reproduced, except in full, without prior written permission of the company. Items marked with "n" or "m" means they are not accredited by CNAS or CMA, "s" means the item of subcontractor is not accredited by CNAS or CMA.

TEST REPORT

Report No.: WD2018010041EN

Date: Jan. 31, 2018

Page: 12 / 53

Test Result(s):

Material No.	Substances	EDXRF Result *	Chemical Result #(mg/kg)	Conclusion
51	Pb	BL	--	PASS
	Cd	BL	--	PASS
	Hg	BL	--	PASS
	Cr ⁶⁺	BL	--	PASS
	PBBs	BL	--	PASS
	PBDEs		--	PASS
52	Pb	BL	--	PASS
	Cd	BL	--	PASS
	Hg	BL	--	PASS
	Cr ⁶⁺	BL	--	PASS
	PBBs	BL	--	PASS
	PBDEs		--	PASS
53	Pb	BL	--	PASS
	Cd	BL	--	PASS
	Hg	BL	--	PASS
	Cr ⁶⁺	BL	--	PASS
	PBBs	BL	--	PASS
	PBDEs		--	PASS
54	Pb	BL	--	PASS
	Cd	BL	--	PASS
	Hg	BL	--	PASS
	Cr ⁶⁺	BL	--	PASS
	PBBs	BL	--	PASS
	PBDEs		--	PASS
55	Pb	BL	--	PASS
	Cd	BL	--	PASS
	Hg	BL	--	PASS
	Cr ⁶⁺	BL	--	PASS
	PBBs	--	--	NA
	PBDEs		--	NA

This Test Report is issued by the company subject to its General Conditions of Service printed overleaf. Attention is drawn to the limitations of liability, indemnification and jurisdictional issues defined therein. The results shown in this test report refer only to the sample(s) tested unless otherwise stated. This Test Report cannot be reproduced, except in full, without prior written permission of the company. Items marked with "n" or "m" means they are not accredited by CNAS or CMA, "s" means the item of subcontractor is not accredited by CNAS or CMA.

TEST REPORT

Report No.: WD2018010041EN

Date: Jan. 31, 2018

Page: 13 / 53

Test Result(s):

Material No.	Substances	EDXRF Result *	Chemical Result #(mg/kg)	Conclusion
56	Pb	BL	--	PASS
	Cd	BL	--	PASS
	Hg	BL	--	PASS
	Cr ⁶⁺	BL	--	PASS
	PBBs	--	--	NA
	PBDEs		--	NA
57	Pb	BL	--	PASS
	Cd	BL	--	PASS
	Hg	BL	--	PASS
	Cr ⁶⁺	BL	--	PASS
	PBBs	--	--	NA
	PBDEs		--	NA
58	Pb	BL	--	PASS
	Cd	BL	--	PASS
	Hg	BL	--	PASS
	Cr ⁶⁺	BL	--	PASS
	PBBs	BL	--	PASS
	PBDEs		--	PASS
59	Pb	BL	--	PASS
	Cd	BL	--	PASS
	Hg	BL	--	PASS
	Cr ⁶⁺	BL	--	PASS
	PBBs	--	--	NA
	PBDEs		--	NA
60	Pb	BL	--	PASS
	Cd	BL	--	PASS
	Hg	BL	--	PASS
	Cr ⁶⁺	BL	--	PASS
	PBBs	--	--	NA
	PBDEs		--	NA

This Test Report is issued by the company subject to its General Conditions of Service printed overleaf. Attention is drawn to the limitations of liability, indemnification and jurisdictional issues defined therein. The results shown in this test report refer only to the sample(s) tested unless otherwise stated. This Test Report cannot be reproduced, except in full, without prior written permission of the company. Items marked with "n" or "m" means they are not accredited by CNAS or CMA, "s" means the item of subcontractor is not accredited by CNAS or CMA.

TEST REPORT

Report No.: WD2018010041EN

Date: Jan. 31, 2018

Page: 14 / 53

Test Result(s):

Material No.	Substances	EDXRF Result *	Chemical Result #(mg/kg)	Conclusion
61	Pb	BL	--	PASS
	Cd	BL	--	PASS
	Hg	BL	--	PASS
	Cr ⁶⁺	BL	--	PASS
	PBBs	--	--	NA
	PBDEs		--	NA
62	Pb	BL	--	PASS
	Cd	BL	--	PASS
	Hg	BL	--	PASS
	Cr ⁶⁺	BL	--	PASS
	PBBs	BL	--	PASS
	PBDEs		--	PASS
63	Pb	BL	--	PASS
	Cd	BL	--	PASS
	Hg	BL	--	PASS
	Cr ⁶⁺	BL	--	PASS
	PBBs	BL	--	PASS
	PBDEs		--	PASS
64	Pb	BL	--	PASS
	Cd	BL	--	PASS
	Hg	BL	--	PASS
	Cr ⁶⁺	BL	--	PASS
	PBBs	BL	--	PASS
	PBDEs		--	PASS
65	Pb	BL	--	PASS
	Cd	BL	--	PASS
	Hg	BL	--	PASS
	Cr ⁶⁺	BL	--	PASS
	PBBs	BL	--	PASS
	PBDEs		--	PASS

This Test Report is issued by the company subject to its General Conditions of Service printed overleaf. Attention is drawn to the limitations of liability, indemnification and jurisdictional issues defined therein. The results shown in this test report refer only to the sample(s) tested unless otherwise stated. This Test Report cannot be reproduced, except in full, without prior written permission of the company. Items marked with "n" or "m" means they are not accredited by CNAS or CMA, "s" means the item of subcontractor is not accredited by CNAS or CMA.

TEST REPORT

Report No.: WD2018010041EN

Date: Jan. 31, 2018

Page: 15 / 53

Test Result(s):

Material No.	Substances	EDXRF Result *	Chemical Result #(mg/kg)	Conclusion
66	Pb	BL	--	PASS
	Cd	BL	--	PASS
	Hg	BL	--	PASS
	Cr ⁶⁺	BL	--	PASS
	PBBs	BL	--	PASS
	PBDEs		--	PASS
67	Pb	BL	--	PASS
	Cd	BL	--	PASS
	Hg	BL	--	PASS
	Cr ⁶⁺	BL	--	PASS
	PBBs	--	--	NA
	PBDEs		--	NA
68	Pb	BL	--	PASS
	Cd	BL	--	PASS
	Hg	BL	--	PASS
	Cr ⁶⁺	BL	--	PASS
	PBBs	--	--	NA
	PBDEs		--	NA
69	Pb	BL	--	PASS
	Cd	BL	--	PASS
	Hg	BL	--	PASS
	Cr ⁶⁺	BL	--	PASS
	PBBs	BL	--	PASS
	PBDEs		--	PASS
70	Pb	BL	--	PASS
	Cd	BL	--	PASS
	Hg	BL	--	PASS
	Cr ⁶⁺	BL	--	PASS
	PBBs	IN	N.D.	PASS
	PBDEs		N.D.	PASS

This Test Report is issued by the company subject to its General Conditions of Service printed overleaf. Attention is drawn to the limitations of liability, indemnification and jurisdictional issues defined therein. The results shown in this test report refer only to the sample(s) tested unless otherwise stated. This Test Report cannot be reproduced, except in full, without prior written permission of the company. Items marked with "n" or "m" means they are not accredited by CNAS or CMA, "s" means the item of subcontractor is not accredited by CNAS or CMA.

TEST REPORT

Report No.: WD2018010041EN

Date: Jan. 31, 2018

Page: 16 / 53

Test Result(s):

Material No.	Substances	EDXRF Result *	Chemical Result #(mg/kg)	Conclusion
71	Pb	BL	--	PASS
	Cd	BL	--	PASS
	Hg	BL	--	PASS
	Cr ⁶⁺	BL	--	PASS
	PBBs	BL	--	PASS
	PBDEs		--	PASS
72	Pb	BL	--	PASS
	Cd	BL	--	PASS
	Hg	BL	--	PASS
	Cr ⁶⁺	BL	--	PASS
	PBBs	BL	--	PASS
	PBDEs		--	PASS
73	Pb	BL	--	PASS
	Cd	BL	--	PASS
	Hg	BL	--	PASS
	Cr ⁶⁺	BL	--	PASS
	PBBs	--	--	NA
	PBDEs		--	NA
74	Pb	BL	--	PASS
	Cd	BL	--	PASS
	Hg	BL	--	PASS
	Cr ⁶⁺	BL	--	PASS
	PBBs	--	--	NA
	PBDEs		--	NA
75	Pb	BL	--	PASS
	Cd	BL	--	PASS
	Hg	BL	--	PASS
	Cr ⁶⁺	BL	--	PASS
	PBBs	BL	--	PASS
	PBDEs		--	PASS

This Test Report is issued by the company subject to its General Conditions of Service printed overleaf. Attention is drawn to the limitations of liability, indemnification and jurisdictional issues defined therein. The results shown in this test report refer only to the sample(s) tested unless otherwise stated. This Test Report cannot be reproduced, except in full, without prior written permission of the company. Items marked with "n" or "m" means they are not accredited by CNAS or CMA, "s" means the item of subcontractor is not accredited by CNAS or CMA.

TEST REPORT

Report No.: WD2018010041EN

Date: Jan. 31, 2018

Page: 17 / 53

Test Result(s):

Material No.	Substances	EDXRF Result *	Chemical Result #(mg/kg)	Conclusion
76	Pb	BL	--	PASS
	Cd	BL	--	PASS
	Hg	BL	--	PASS
	Cr ⁶⁺	BL	--	PASS
	PBBs	BL	--	PASS
	PBDEs		--	PASS
77	Pb	BL	--	PASS
	Cd	BL	--	PASS
	Hg	BL	--	PASS
	Cr ⁶⁺	BL	--	PASS
	PBBs	BL	--	PASS
	PBDEs		--	PASS
78	Pb	BL	--	PASS
	Cd	BL	--	PASS
	Hg	BL	--	PASS
	Cr ⁶⁺	BL	--	PASS
	PBBs	BL	--	PASS
	PBDEs		--	PASS
79	Pb	BL	--	PASS
	Cd	BL	--	PASS
	Hg	BL	--	PASS
	Cr ⁶⁺	BL	--	PASS
	PBBs	BL	--	PASS
	PBDEs		--	PASS
80	Pb	BL	--	PASS
	Cd	BL	--	PASS
	Hg	BL	--	PASS
	Cr ⁶⁺	BL	--	PASS
	PBBs	BL	--	PASS
	PBDEs		--	PASS

This Test Report is issued by the company subject to its General Conditions of Service printed overleaf. Attention is drawn to the limitations of liability, indemnification and jurisdictional issues defined therein. The results shown in this test report refer only to the sample(s) tested unless otherwise stated. This Test Report cannot be reproduced, except in full, without prior written permission of the company. Items marked with "n" or "m" means they are not accredited by CNAS or CMA, "s" means the item of subcontractor is not accredited by CNAS or CMA.

TEST REPORT

Report No.: WD2018010041EN

Date: Jan. 31, 2018

Page: 18 / 53

Test Result(s):

Material No.	Substances	EDXRF Result *	Chemical Result #(mg/kg)	Conclusion
81	Pb	BL	--	PASS
	Cd	BL	--	PASS
	Hg	BL	--	PASS
	Cr ⁶⁺	BL	--	PASS
	PBBs	BL	--	PASS
	PBDEs		--	PASS
82	Pb	BL	--	PASS
	Cd	BL	--	PASS
	Hg	BL	--	PASS
	Cr ⁶⁺	BL	--	PASS
	PBBs	BL	--	PASS
	PBDEs		--	PASS
83	Pb	BL	--	PASS
	Cd	BL	--	PASS
	Hg	BL	--	PASS
	Cr ⁶⁺	BL	--	PASS
	PBBs	BL	--	PASS
	PBDEs		--	PASS
84	Pb	BL	--	PASS
	Cd	BL	--	PASS
	Hg	BL	--	PASS
	Cr ⁶⁺	BL	--	PASS
	PBBs	BL	--	PASS
	PBDEs		--	PASS
85	Pb	BL	--	PASS
	Cd	BL	--	PASS
	Hg	BL	--	PASS
	Cr ⁶⁺	BL	--	PASS
	PBBs	--	--	NA
	PBDEs		--	NA

This Test Report is issued by the company subject to its General Conditions of Service printed overleaf. Attention is drawn to the limitations of liability, indemnification and jurisdictional issues defined therein. The results shown in this test report refer only to the sample(s) tested unless otherwise stated. This Test Report cannot be reproduced, except in full, without prior written permission of the company. Items marked with "n" or "m" means they are not accredited by CNAS or CMA, "s" means the item of subcontractor is not accredited by CNAS or CMA.

TEST REPORT

Report No.: WD2018010041EN

Date: Jan. 31, 2018

Page: 19 / 53

Test Result(s):

Material No.	Substances	EDXRF Result *	Chemical Result #(mg/kg)	Conclusion
86	Pb	BL	--	PASS
	Cd	BL	--	PASS
	Hg	BL	--	PASS
	Cr ⁶⁺	BL	--	PASS
	PBBs	--	--	NA
	PBDEs		--	NA
87	Pb	BL	--	PASS
	Cd	BL	--	PASS
	Hg	BL	--	PASS
	Cr ⁶⁺	BL	--	PASS
	PBBs	--	--	NA
	PBDEs		--	NA
88	Pb	BL	--	PASS
	Cd	BL	--	PASS
	Hg	BL	--	PASS
	Cr ⁶⁺	BL	--	PASS
	PBBs	--	--	NA
	PBDEs		--	NA
89	Pb	BL	--	PASS
	Cd	BL	--	PASS
	Hg	BL	--	PASS
	Cr ⁶⁺	BL	--	PASS
	PBBs	--	--	NA
	PBDEs		--	NA
90	Pb	BL	--	PASS
	Cd	BL	--	PASS
	Hg	BL	--	PASS
	Cr ⁶⁺	BL	--	PASS
	PBBs	--	--	NA
	PBDEs		--	NA

This Test Report is issued by the company subject to its General Conditions of Service printed overleaf. Attention is drawn to the limitations of liability, indemnification and jurisdictional issues defined therein. The results shown in this test report refer only to the sample(s) tested unless otherwise stated. This Test Report cannot be reproduced, except in full, without prior written permission of the company. Items marked with "n" or "m" means they are not accredited by CNAS or CMA, "s" means the item of subcontractor is not accredited by CNAS or CMA.

TEST REPORT

Report No.: WD2018010041EN

Date: Jan. 31, 2018

Page: 20 / 53

Test Result(s):

Material No.	Substances	EDXRF Result *	Chemical Result #(mg/kg)	Conclusion
91	Pb	BL	--	PASS
	Cd	BL	--	PASS
	Hg	BL	--	PASS
	Cr ⁶⁺	BL	--	PASS
	PBBs	--	--	NA
	PBDEs		--	NA
92	Pb	BL	--	PASS
	Cd	BL	--	PASS
	Hg	BL	--	PASS
	Cr ⁶⁺	BL	--	PASS
	PBBs	--	--	NA
	PBDEs		--	NA
93	Pb	BL	--	PASS
	Cd	BL	--	PASS
	Hg	BL	--	PASS
	Cr ⁶⁺	BL	--	PASS
	PBBs	BL	--	PASS
	PBDEs		--	PASS
94	Pb	BL	--	PASS
	Cd	BL	--	PASS
	Hg	BL	--	PASS
	Cr ⁶⁺	BL	--	PASS
	PBBs	BL	--	PASS
	PBDEs		--	PASS
95	Pb	BL	--	PASS
	Cd	BL	--	PASS
	Hg	BL	--	PASS
	Cr ⁶⁺	BL	--	PASS
	PBBs	BL	--	PASS
	PBDEs		--	PASS

This Test Report is issued by the company subject to its General Conditions of Service printed overleaf. Attention is drawn to the limitations of liability, indemnification and jurisdictional issues defined therein. The results shown in this test report refer only to the sample(s) tested unless otherwise stated. This Test Report cannot be reproduced, except in full, without prior written permission of the company. Items marked with "n" or "m" means they are not accredited by CNAS or CMA, "s" means the item of subcontractor is not accredited by CNAS or CMA.

TEST REPORT

Report No.: WD2018010041EN

Date: Jan. 31, 2018

Page: 21 / 53

Test Result(s):

Material No.	Substances	EDXRF Result *	Chemical Result #(mg/kg)	Conclusion
96	Pb	BL	--	PASS
	Cd	BL	--	PASS
	Hg	BL	--	PASS
	Cr ⁶⁺	BL	--	PASS
	PBBs	BL	--	PASS
	PBDEs		--	PASS
97	Pb	BL	--	PASS
	Cd	BL	--	PASS
	Hg	BL	--	PASS
	Cr ⁶⁺	BL	--	PASS
	PBBs	BL	--	PASS
	PBDEs		--	PASS
98	Pb	BL	--	PASS
	Cd	BL	--	PASS
	Hg	BL	--	PASS
	Cr ⁶⁺	BL	--	PASS
	PBBs	--	--	NA
	PBDEs		--	NA
99	Pb	BL	--	PASS
	Cd	BL	--	PASS
	Hg	BL	--	PASS
	Cr ⁶⁺	BL	--	PASS
	PBBs	--	--	NA
	PBDEs		--	NA
100	Pb	BL	--	PASS
	Cd	BL	--	PASS
	Hg	BL	--	PASS
	Cr ⁶⁺	BL	--	PASS
	PBBs	--	--	NA
	PBDEs		--	NA

This Test Report is issued by the company subject to its General Conditions of Service printed overleaf. Attention is drawn to the limitations of liability, indemnification and jurisdictional issues defined therein. The results shown in this test report refer only to the sample(s) tested unless otherwise stated. This Test Report cannot be reproduced, except in full, without prior written permission of the company. Items marked with "n" or "m" means they are not accredited by CNAS or CMA, "s" means the item of subcontractor is not accredited by CNAS or CMA.

TEST REPORT

Report No.: WD2018010041EN

Date: Jan. 31, 2018

Page: 22 / 53

Test Result(s):

Material No.	Substances	EDXRF Result *	Chemical Result #(mg/kg)	Conclusion
101	Pb	BL	--	PASS
	Cd	BL	--	PASS
	Hg	BL	--	PASS
	Cr ⁶⁺	BL	--	PASS
	PBBs	--	--	NA
	PBDEs		--	NA
102	Pb	BL	--	PASS
	Cd	BL	--	PASS
	Hg	BL	--	PASS
	Cr ⁶⁺	BL	--	PASS
	PBBs	--	--	NA
	PBDEs		--	NA
103	Pb	BL	--	PASS
	Cd	BL	--	PASS
	Hg	BL	--	PASS
	Cr ⁶⁺	BL	--	PASS
	PBBs	--	--	NA
	PBDEs		--	NA
104	Pb	BL	--	PASS
	Cd	BL	--	PASS
	Hg	BL	--	PASS
	Cr ⁶⁺	BL	--	PASS
	PBBs	BL	--	PASS
	PBDEs		--	PASS
105	Pb	BL	--	PASS
	Cd	BL	--	PASS
	Hg	BL	--	PASS
	Cr ⁶⁺	BL	--	PASS
	PBBs	--	--	NA
	PBDEs		--	NA

This Test Report is issued by the company subject to its General Conditions of Service printed overleaf. Attention is drawn to the limitations of liability, indemnification and jurisdictional issues defined therein. The results shown in this test report refer only to the sample(s) tested unless otherwise stated. This Test Report cannot be reproduced, except in full, without prior written permission of the company. Items marked with "n" or "m" means they are not accredited by CNAS or CMA, "s" means the item of subcontractor is not accredited by CNAS or CMA.

TEST REPORT

Report No.: WD2018010041EN

Date: Jan. 31, 2018

Page: 23 / 53

Test Result(s):

Material No.	Substances	EDXRF Result *	Chemical Result #(mg/kg)	Conclusion
106	Pb	BL	--	PASS
	Cd	BL	--	PASS
	Hg	BL	--	PASS
	Cr ⁶⁺	BL	--	PASS
	PBBs	--	--	NA
	PBDEs		--	NA
107	Pb	BL	--	PASS
	Cd	BL	--	PASS
	Hg	BL	--	PASS
	Cr ⁶⁺	BL	--	PASS
	PBBs	BL	--	PASS
	PBDEs		--	PASS
108	Pb	BL	--	PASS
	Cd	BL	--	PASS
	Hg	BL	--	PASS
	Cr ⁶⁺	BL	--	PASS
	PBBs	BL	--	PASS
	PBDEs		--	PASS
109	Pb	IN	26500 ^{E1}	PASS
	Cd	BL	--	PASS
	Hg	BL	--	PASS
	Cr ⁶⁺	BL	--	PASS
	PBBs	--	--	NA
	PBDEs		--	NA
110	Pb	BL	--	PASS
	Cd	BL	--	PASS
	Hg	BL	--	PASS
	Cr ⁶⁺	BL	--	PASS
	PBBs	BL	--	PASS
	PBDEs		--	PASS

This Test Report is issued by the company subject to its General Conditions of Service printed overleaf. Attention is drawn to the limitations of liability, indemnification and jurisdictional issues defined therein. The results shown in this test report refer only to the sample(s) tested unless otherwise stated. This Test Report cannot be reproduced, except in full, without prior written permission of the company. Items marked with "n" or "m" means they are not accredited by CNAS or CMA, "s" means the item of subcontractor is not accredited by CNAS or CMA.

TEST REPORT

Report No.: WD2018010041EN

Date: Jan. 31, 2018

Page: 24 / 53

Test Result(s):

Material No.	Substances	EDXRF Result *	Chemical Result #(mg/kg)	Conclusion
111	Pb	BL	--	PASS
	Cd	BL	--	PASS
	Hg	BL	--	PASS
	Cr ⁶⁺	BL	--	PASS
	PBBs	BL	--	PASS
	PBDEs		--	PASS
112	Pb	BL	--	PASS
	Cd	BL	--	PASS
	Hg	BL	--	PASS
	Cr ⁶⁺	BL	--	PASS
	PBBs	BL	--	PASS
	PBDEs		--	PASS
113	Pb	BL	--	PASS
	Cd	BL	--	PASS
	Hg	BL	--	PASS
	Cr ⁶⁺	BL	--	PASS
	PBBs	BL	--	PASS
	PBDEs		--	PASS
114	Pb	BL	--	PASS
	Cd	BL	--	PASS
	Hg	BL	--	PASS
	Cr ⁶⁺	BL	--	PASS
	PBBs	--	--	NA
	PBDEs		--	NA
115	Pb	BL	--	PASS
	Cd	BL	--	PASS
	Hg	BL	--	PASS
	Cr ⁶⁺	BL	--	PASS
	PBBs	BL	--	PASS
	PBDEs		--	PASS

This Test Report is issued by the company subject to its General Conditions of Service printed overleaf. Attention is drawn to the limitations of liability, indemnification and jurisdictional issues defined therein. The results shown in this test report refer only to the sample(s) tested unless otherwise stated. This Test Report cannot be reproduced, except in full, without prior written permission of the company. Items marked with "n" or "m" means they are not accredited by CNAS or CMA, "s" means the item of subcontractor is not accredited by CNAS or CMA.

TEST REPORT

Report No.: WD2018010041EN

Date: Jan. 31, 2018

Page: 25 / 53

Test Result(s):

Material No.	Substances	EDXRF Result *	Chemical Result #(mg/kg)	Conclusion
116	Pb	BL	--	PASS
	Cd	BL	--	PASS
	Hg	BL	--	PASS
	Cr ⁶⁺	BL	--	PASS
	PBBs	IN	N.D.	PASS
	PBDEs		N.D.	PASS
117	Pb	BL	--	PASS
	Cd	BL	--	PASS
	Hg	BL	--	PASS
	Cr ⁶⁺	BL	--	PASS
	PBBs	--	--	NA
	PBDEs		--	NA
118	Pb	BL	--	PASS
	Cd	BL	--	PASS
	Hg	BL	--	PASS
	Cr ⁶⁺	BL	--	PASS
	PBBs	--	--	NA
	PBDEs		--	NA
119	Pb	BL	--	PASS
	Cd	BL	--	PASS
	Hg	BL	--	PASS
	Cr ⁶⁺	BL	--	PASS
	PBBs	--	--	NA
	PBDEs		--	NA
120	Pb	BL	--	PASS
	Cd	BL	--	PASS
	Hg	BL	--	PASS
	Cr ⁶⁺	BL	--	PASS
	PBBs	BL	--	PASS
	PBDEs		--	PASS

This Test Report is issued by the company subject to its General Conditions of Service printed overleaf. Attention is drawn to the limitations of liability, indemnification and jurisdictional issues defined therein. The results shown in this test report refer only to the sample(s) tested unless otherwise stated. This Test Report cannot be reproduced, except in full, without prior written permission of the company. Items marked with "n" or "m" means they are not accredited by CNAS or CMA, "s" means the item of subcontractor is not accredited by CNAS or CMA.

TEST REPORT

Report No.: WD2018010041EN

Date: Jan. 31, 2018

Page: 26 / 53

Test Result(s):

Material No.	Substances	EDXRF Result *	Chemical Result #(mg/kg)	Conclusion
121	Pb	BL	--	PASS
	Cd	BL	--	PASS
	Hg	BL	--	PASS
	Cr ⁶⁺	BL	--	PASS
	PBBs	--	--	NA
	PBDEs		--	NA
122	Pb	BL	--	PASS
	Cd	BL	--	PASS
	Hg	BL	--	PASS
	Cr ⁶⁺	BL	--	PASS
	PBBs	BL	--	PASS
	PBDEs		--	PASS
123	Pb	BL	--	PASS
	Cd	BL	--	PASS
	Hg	BL	--	PASS
	Cr ⁶⁺	BL	--	PASS
	PBBs	--	--	NA
	PBDEs		--	NA
124	Pb	BL	--	PASS
	Cd	BL	--	PASS
	Hg	BL	--	PASS
	Cr ⁶⁺	BL	--	PASS
	PBBs	--	--	NA
	PBDEs		--	NA
125	Pb	BL	--	PASS
	Cd	BL	--	PASS
	Hg	BL	--	PASS
	Cr ⁶⁺	BL	--	PASS
	PBBs	BL	--	PASS
	PBDEs		--	PASS

This Test Report is issued by the company subject to its General Conditions of Service printed overleaf. Attention is drawn to the limitations of liability, indemnification and jurisdictional issues defined therein. The results shown in this test report refer only to the sample(s) tested unless otherwise stated. This Test Report cannot be reproduced, except in full, without prior written permission of the company. Items marked with "n" or "m" means they are not accredited by CNAS or CMA, "s" means the item of subcontractor is not accredited by CNAS or CMA.

TEST REPORT

Report No.: WD2018010041EN

Date: Jan. 31, 2018

Page: 27 / 53

Test Result(s):

Material No.	Substances	EDXRF Result *	Chemical Result #(mg/kg)	Conclusion
126	Pb	BL	--	PASS
	Cd	BL	--	PASS
	Hg	BL	--	PASS
	Cr ⁶⁺	BL	--	PASS
	PBBs	--	--	NA
	PBDEs		--	NA
127	Pb	BL	--	PASS
	Cd	BL	--	PASS
	Hg	BL	--	PASS
	Cr ⁶⁺	BL	--	PASS
	PBBs	BL	--	PASS
	PBDEs		--	PASS
128	Pb	BL	--	PASS
	Cd	BL	--	PASS
	Hg	BL	--	PASS
	Cr ⁶⁺	BL	--	PASS
	PBBs	--	--	NA
	PBDEs		--	NA
129	Pb	BL	--	PASS
	Cd	BL	--	PASS
	Hg	BL	--	PASS
	Cr ⁶⁺	BL	--	PASS
	PBBs	--	--	NA
	PBDEs		--	NA
130	Pb	BL	--	PASS
	Cd	BL	--	PASS
	Hg	BL	--	PASS
	Cr ⁶⁺	BL	--	PASS
	PBBs	--	--	NA
	PBDEs		--	NA

This Test Report is issued by the company subject to its General Conditions of Service printed overleaf. Attention is drawn to the limitations of liability, indemnification and jurisdictional issues defined therein. The results shown in this test report refer only to the sample(s) tested unless otherwise stated. This Test Report cannot be reproduced, except in full, without prior written permission of the company. Items marked with "n" or "m" means they are not accredited by CNAS or CMA, "s" means the item of subcontractor is not accredited by CNAS or CMA.

TEST REPORT

Report No.: WD2018010041EN

Date: Jan. 31, 2018

Page: 28 / 53

Test Result(s):

Material No.	Substances	EDXRF Result *	Chemical Result #(mg/kg)	Conclusion
131	Pb	BL	--	PASS
	Cd	BL	--	PASS
	Hg	BL	--	PASS
	Cr ⁶⁺	BL	--	PASS
	PBBs	BL	--	PASS
	PBDEs		--	PASS
132	Pb	BL	--	PASS
	Cd	BL	--	PASS
	Hg	BL	--	PASS
	Cr ⁶⁺	BL	--	PASS
	PBBs	BL	--	PASS
	PBDEs		--	PASS
133	Pb	BL	--	PASS
	Cd	BL	--	PASS
	Hg	BL	--	PASS
	Cr ⁶⁺	BL	--	PASS
	PBBs	--	--	NA
	PBDEs		--	NA
134	Pb	BL	--	PASS
	Cd	BL	--	PASS
	Hg	BL	--	PASS
	Cr ⁶⁺	BL	--	PASS
	PBBs	BL	--	PASS
	PBDEs		--	PASS
135	Pb	BL	--	PASS
	Cd	BL	--	PASS
	Hg	BL	--	PASS
	Cr ⁶⁺	BL	--	PASS
	PBBs	--	--	NA
	PBDEs		--	NA

This Test Report is issued by the company subject to its General Conditions of Service printed overleaf. Attention is drawn to the limitations of liability, indemnification and jurisdictional issues defined therein. The results shown in this test report refer only to the sample(s) tested unless otherwise stated. This Test Report cannot be reproduced, except in full, without prior written permission of the company. Items marked with "n" or "m" means they are not accredited by CNAS or CMA, "s" means the item of subcontractor is not accredited by CNAS or CMA.

TEST REPORT

Report No.: WD2018010041EN

Date: Jan. 31, 2018

Page: 29 / 53

Test Result(s):

Material No.	Substances	EDXRF Result *	Chemical Result #(mg/kg)	Conclusion
136	Pb	BL	--	PASS
	Cd	BL	--	PASS
	Hg	BL	--	PASS
	Cr ⁶⁺	BL	--	PASS
	PBBs	--	--	NA
	PBDEs		--	NA
137	Pb	BL	--	PASS
	Cd	BL	--	PASS
	Hg	BL	--	PASS
	Cr ⁶⁺	BL	--	PASS
	PBBs	BL	--	PASS
	PBDEs		--	PASS
138	Pb	BL	--	PASS
	Cd	BL	--	PASS
	Hg	BL	--	PASS
	Cr ⁶⁺	BL	--	PASS
	PBBs	--	--	NA
	PBDEs		--	NA
139	Pb	BL	--	PASS
	Cd	BL	--	PASS
	Hg	BL	--	PASS
	Cr ⁶⁺	BL	--	PASS
	PBBs	BL	--	PASS
	PBDEs		--	PASS
140	Pb	BL	--	PASS
	Cd	BL	--	PASS
	Hg	BL	--	PASS
	Cr ⁶⁺	BL	--	PASS
	PBBs	--	--	NA
	PBDEs		--	NA

This Test Report is issued by the company subject to its General Conditions of Service printed overleaf. Attention is drawn to the limitations of liability, indemnification and jurisdictional issues defined therein. The results shown in this test report refer only to the sample(s) tested unless otherwise stated. This Test Report cannot be reproduced, except in full, without prior written permission of the company. Items marked with "n" or "m" means they are not accredited by CNAS or CMA, "s" means the item of subcontractor is not accredited by CNAS or CMA.

TEST REPORT

Report No.: WD2018010041EN

Date: Jan. 31, 2018

Page: 30 / 53

Test Result(s):

Material No.	Substances	EDXRF Result *	Chemical Result #(mg/kg)	Conclusion
141	Pb	BL	--	PASS
	Cd	BL	--	PASS
	Hg	BL	--	PASS
	Cr ⁶⁺	BL	--	PASS
	PBBs	BL	--	PASS
	PBDEs		--	PASS
142	Pb	BL	--	PASS
	Cd	BL	--	PASS
	Hg	BL	--	PASS
	Cr ⁶⁺	BL	--	PASS
	PBBs	--	--	NA
	PBDEs		--	NA
143	Pb	BL	--	PASS
	Cd	BL	--	PASS
	Hg	BL	--	PASS
	Cr ⁶⁺	BL	--	PASS
	PBBs	--	--	NA
	PBDEs		--	NA
144	Pb	BL	--	PASS
	Cd	BL	--	PASS
	Hg	BL	--	PASS
	Cr ⁶⁺	BL	--	PASS
	PBBs	IN	N.D.	PASS
	PBDEs		N.D.	PASS

This Test Report is issued by the company subject to its General Conditions of Service printed overleaf. Attention is drawn to the limitations of liability, indemnification and jurisdictional issues defined therein. The results shown in this test report refer only to the sample(s) tested unless otherwise stated. This Test Report cannot be reproduced, except in full, without prior written permission of the company. Items marked with "n" or "m" means they are not accredited by CNAS or CMA, "s" means the item of subcontractor is not accredited by CNAS or CMA.

TEST REPORT

Report No.: WD2018010041EN

Date: Jan. 31, 2018

Page: 31 / 53

- Note:**
1. mg/kg = milligram per kilogram (ppm).
 2. N.D. = Not Detected (<RL).
 3. RL(Reporting Limit): 2 mg/kg for Pb/ Cd/ Hg/ Cr⁶⁺(Nonmetal material); 5 mg/kg for PBBs & PBDEs.
 4. LOQ(limit of quantification)(Cr⁶⁺)=0.10µg/cm².
 5. "▼" = a. when Cr(VI) in a sample is detected above 0.13 µg/cm², the sample is considered to be **Positive** for Cr(VI).
b. when Cr(VI) in a sample is detected below 0.10 µg/cm², the sample is considered to be **Negative** for Cr(VI).
c. when Cr(VI) in a sample is detected between 0.10 µg/cm² and 0.13 µg/cm², the result was **Inconclusive**.
 6. "*" = It is the result on total Cr and Br while test substances are Cr⁶⁺ and PBBs & PBDEs.
 7. "#" = Result are obtained by EDXRF for primary screening, if the result exceeds the below limit (BL), and further chemical testing.
 8. NA=Not Applicable.
 9. "E1" = This material is copper alloy proved by client, Lead as a copper alloy containing up to 40000ppm on the requirements of RoHS Directive 2011/65/EU.

Screening limits in mg/kg for regulated elements in various matrices

Elements	Polymer	Metal	Composite Materials
Pb	BL≤(700-3σ)<X<(1300+3σ)≤ OL	BL≤(700-3σ)<X<(1300+3σ)≤ OL	BL≤(500-3σ)<X<(1500+3σ)≤ OL
Cd	BL≤(70-3σ)<X<(130+3σ)≤ OL	BL≤(70-3σ)<X<(130+3σ)≤ OL	LOD<X<(150+3σ)≤OL
Hg	BL≤(700-3σ)<X<(1300+3σ)≤ OL	BL≤(700-3σ)<X<(1300+3σ)≤ OL	BL≤(500-3σ)<X<(1500+3σ)≤ OL
Cr	BL≤(700-3σ)<X	BL≤(700-3σ)<X	BL≤(500-3σ)<X
Br	BL≤(300-3σ)<X	--	BL≤(250-3σ)<X

BL = Below Limit, OL = Over Limit, IN = Inconclusive, LOD = Limit of Detection

This Test Report is issued by the company subject to its General Conditions of Service printed overleaf. Attention is drawn to the limitations of liability, indemnification and jurisdictional issues defined therein. The results shown in this test report refer only to the sample(s) tested unless otherwise stated. This Test Report cannot be reproduced, except in full, without prior written permission of the company. Items marked with "n" or "m" means they are not accredited by CNAS or CMA, "s" means the item of subcontractor is not accredited by CNAS or CMA.

GUANGDONG WONDER TESTING INTERNATIONAL CO., LTD.

No. 221 Jianshebei Road Huadu District, Guangzhou City, Guangdong Province, China, 510800

E-mail: wd@wdwonder.com Tel: 86-020-8689 0001 Fax: 86-020-8689 6998 Website: http://www.wdwonder.com

TEST REPORT

Report No.: WD2018010041EN

Date: Jan. 31, 2018

Page: 32 / 53

Test Result(s):

Phthalates

Method: With reference to EN14372:2004, analyzed by Gas Chromatograph-Mass Spectrometry (GC-MS).

Substances	DBP	BBP	DEHP	DIBP	Conclusion
CAS No.	84-74-2	85-68-7	117-81-7	84-69-5	
Limit (mg/kg)	1000	1000	1000	1000	
RL (mg/kg)	30	30	30	30	
Material No.	Result (mg/kg)				
1	N.D.	N.D.	N.D.	N.D.	PASS
2	N.D.	N.D.	N.D.	N.D.	PASS
4	N.D.	N.D.	N.D.	N.D.	PASS
5	N.D.	N.D.	N.D.	N.D.	PASS
6	N.D.	N.D.	N.D.	N.D.	PASS
7	N.D.	N.D.	N.D.	N.D.	PASS
9	N.D.	N.D.	N.D.	N.D.	PASS
10	N.D.	N.D.	N.D.	N.D.	PASS
13	N.D.	N.D.	N.D.	N.D.	PASS
14	N.D.	N.D.	N.D.	N.D.	PASS
15	N.D.	N.D.	N.D.	N.D.	PASS
16	N.D.	N.D.	N.D.	N.D.	PASS
17	N.D.	N.D.	N.D.	N.D.	PASS
18	N.D.	N.D.	N.D.	N.D.	PASS
19	N.D.	N.D.	N.D.	N.D.	PASS
22	N.D.	N.D.	N.D.	N.D.	PASS
25	N.D.	N.D.	N.D.	N.D.	PASS
26	N.D.	N.D.	N.D.	N.D.	PASS
27	N.D.	N.D.	N.D.	N.D.	PASS
28	N.D.	N.D.	N.D.	N.D.	PASS
29	N.D.	N.D.	N.D.	N.D.	PASS
30	N.D.	N.D.	N.D.	N.D.	PASS
32	N.D.	N.D.	N.D.	N.D.	PASS
33	N.D.	N.D.	N.D.	N.D.	PASS
36	N.D.	N.D.	N.D.	N.D.	PASS
37	N.D.	N.D.	N.D.	N.D.	PASS
38	N.D.	N.D.	N.D.	N.D.	PASS
42	N.D.	N.D.	N.D.	N.D.	PASS

This Test Report is issued by the company subject to its General Conditions of Service printed overleaf. Attention is drawn to the limitations of liability, indemnification and jurisdictional issues defined therein. The results shown in this test report refer only to the sample(s) tested unless otherwise stated. This Test Report cannot be reproduced, except in full, without prior written permission of the company. Items marked with "n" or "m" means they are not accredited by CNAS or CMA, "s" means the item of subcontractor is not accredited by CNAS or CMA.

TEST REPORT

Report No.: WD2018010041EN

Date: Jan. 31, 2018

Page: 33 / 53

Test Result(s):

Phthalates

Method: With reference to EN14372:2004, analyzed by Gas Chromatograph-Mass Spectrometry (GC-MS).

Substances	DBP	BBP	DEHP	DIBP	Conclusion
CAS No.	84-74-2	85-68-7	117-81-7	84-69-5	
Limit (mg/kg)	1000	1000	1000	1000	
RL (mg/kg)	30	30	30	30	
Material No.	Result (mg/kg)				
44	N.D.	N.D.	N.D.	N.D.	PASS
50	N.D.	N.D.	N.D.	N.D.	PASS
51	N.D.	N.D.	N.D.	N.D.	PASS
53	N.D.	N.D.	N.D.	N.D.	PASS
54	N.D.	N.D.	N.D.	N.D.	PASS
58	N.D.	N.D.	N.D.	N.D.	PASS
62	N.D.	N.D.	N.D.	N.D.	PASS
63	N.D.	N.D.	N.D.	N.D.	PASS
64	N.D.	N.D.	N.D.	N.D.	PASS
65	N.D.	N.D.	N.D.	N.D.	PASS
66	N.D.	N.D.	N.D.	N.D.	PASS
69	N.D.	N.D.	N.D.	N.D.	PASS
70	N.D.	N.D.	N.D.	N.D.	PASS
71	N.D.	N.D.	N.D.	N.D.	PASS
75	N.D.	N.D.	N.D.	N.D.	PASS
76	N.D.	N.D.	N.D.	N.D.	PASS
77	N.D.	N.D.	N.D.	N.D.	PASS
78	N.D.	N.D.	N.D.	N.D.	PASS
79	N.D.	N.D.	N.D.	N.D.	PASS
80	N.D.	N.D.	N.D.	N.D.	PASS
81	N.D.	N.D.	N.D.	N.D.	PASS
108	N.D.	N.D.	N.D.	N.D.	PASS
97	N.D.	N.D.	N.D.	N.D.	PASS
104	N.D.	N.D.	N.D.	N.D.	PASS
107	N.D.	N.D.	N.D.	N.D.	PASS
82	N.D.	N.D.	N.D.	N.D.	PASS
83	N.D.	N.D.	N.D.	N.D.	PASS
84	N.D.	N.D.	N.D.	N.D.	PASS

This Test Report is issued by the company subject to its General Conditions of Service printed overleaf. Attention is drawn to the limitations of liability, indemnification and jurisdictional issues defined therein. The results shown in this test report refer only to the sample(s) tested unless otherwise stated. This Test Report cannot be reproduced, except in full, without prior written permission of the company. Items marked with "n" or "m" means they are not accredited by CNAS or CMA, "s" means the item of subcontractor is not accredited by CNAS or CMA.

TEST REPORT

Report No.: WD2018010041EN

Date: Jan. 31, 2018

Page: 34 / 53

Test Result(s):

Phthalates

Method: With reference to EN14372:2004, analyzed by Gas Chromatograph-Mass Spectrometry (GC-MS).

Substances	DBP	BBP	DEHP	DIBP	Conclusion
CAS No.	84-74-2	85-68-7	117-81-7	84-69-5	
Limit (mg/kg)	1000	1000	1000	1000	
RL (mg/kg)	30	30	30	30	
Material No.	Result (mg/kg)				
93	N.D.	N.D.	N.D.	N.D.	PASS
94	N.D.	N.D.	N.D.	N.D.	PASS
96	N.D.	N.D.	N.D.	N.D.	PASS
110	N.D.	N.D.	N.D.	N.D.	PASS
111	N.D.	N.D.	N.D.	N.D.	PASS
112	N.D.	N.D.	N.D.	N.D.	PASS
113	N.D.	N.D.	N.D.	N.D.	PASS
115	N.D.	N.D.	N.D.	N.D.	PASS
116	N.D.	N.D.	N.D.	N.D.	PASS
120	N.D.	N.D.	N.D.	N.D.	PASS
122	N.D.	N.D.	N.D.	N.D.	PASS
125	N.D.	N.D.	N.D.	N.D.	PASS
127	N.D.	N.D.	N.D.	N.D.	PASS
132	N.D.	N.D.	N.D.	N.D.	PASS
134	N.D.	N.D.	N.D.	N.D.	PASS
137	N.D.	N.D.	N.D.	N.D.	PASS
139	N.D.	N.D.	N.D.	N.D.	PASS
141	N.D.	N.D.	N.D.	N.D.	PASS
144	N.D.	N.D.	N.D.	N.D.	PASS

- Note:**
1. mg/kg = milligram per kilogram (ppm).
 2. N.D. = Not Detected (< RL).
 3. RL = Reporting Limit.

This Test Report is issued by the company subject to its General Conditions of Service printed overleaf. Attention is drawn to the limitations of liability, indemnification and jurisdictional issues defined therein. The results shown in this test report refer only to the sample(s) tested unless otherwise stated. This Test Report cannot be reproduced, except in full, without prior written permission of the company. Items marked with "n" or "m" means they are not accredited by CNAS or CMA, "s" means the item of subcontractor is not accredited by CNAS or CMA.

GUANGDONG WONDER TESTING | No. 221 Jianshebei Road Huadu District, Guangzhou City, Guangdong Province, China, 510800

INTERNATIONAL CO., LTD. | E-mail: wd@wdwonder.com | Tel: 86-020-8689 0001 | Fax: 86-020-8689 6998 | Website: http://www.wdwonder.com

TEST REPORT

Report No.: WD2018010041EN

Date: Jan. 31, 2018

Page: 35 / 53

Test Material List

The following materials apply only to the samples submitted for chemical testing

Material No.	Description	Location
1	Black coating	Supportor
2	White coating	Supportor
3	Silvery metal	Substrate
4	White plastic	Pad
5	Grey plastic	Nut
6	Black plastic	Nut
7	Black plastic	Hoop ring
8	Silvery metal	Tube
9	White coating	Protective screening
10	Black coating	Protective screening
11	Silvery metal substrate	Protective screening
12	Silvery metal	Protective screening (big)
13	White plastic	Fan blade
14	Red plastic	Fan blade
15	Black plastic	Fan blade
16	Dark blue plastic	Fan blade
17	Silver grey plastic	Fan blade
18	Green plastic	Fan blade
19	Semitransparent plastic	Fan blade
20	Silvery metal clip	Fan blade
21	Silvery metal	Rivet
22	White plastic	Protective screening
23	Silvery metal	Controller
24	Silvery meta ring	Controller
25	White plastic	Controller
26	Purple plastic	Controller
27	Orange plastic	Controller
28	Black plastic	Controller
29	Silvery coating	Key
30	Black plastic	Substrate
31	Silvery metal	Tin bar
32	Yellow plastic	Electric relay
33	Yellow colloid	Electric relay

This Test Report is issued by the company subject to its General Conditions of Service printed overleaf. Attention is drawn to the limitations of liability, indemnification and jurisdictional issues defined therein. The results shown in this test report refer only to the sample(s) tested unless otherwise stated. This Test Report cannot be reproduced, except in full, without prior written permission of the company. Items marked with "n" or "m" means they are not accredited by CNAS or CMA, "s" means the item of subcontractor is not accredited by CNAS or CMA.

TEST REPORT

Report No.: WD2018010041EN

Date: Jan. 31, 2018

Page: 36 / 53

34	Silvery aluminium foil	Electric relay
35	Silvery metal pin	Electric relay
36	Black plastic	Tube
37	Red plastic	Indicator light
38	Black plastic with grey printing	Electrolytic capacitor
39	Silvery metal	Electrolytic capacitor
40	Electrolytic paper	Electrolytic capacitor
41	Aluminium foil	Electrolytic capacitor
42	Black rubber stopper	Electrolytic capacitor
43	Silvery metal pin	Electrolytic capacitor
44	Black plastic button	Contact switch
45	Silvery metal sheet	Contact switch
46	Coppery metal wafer	Contact switch
47	Black graphite	Diode
48	Beige graphite	Resistor
49	Transparent glass	Glass diode
50	Brown plastic	Capacitor
51	Black plastic	IC chip
52	Grey graphite	Resistor
53	Black plastic	Triode
54	Black plastic	Rectifier bridge
55	Silvery metal	Fuse
56	Transparent glass	Fuse
57	Silver metal silk	Fuse
58	Black plastic	Buzzer
59	Silvery metal sheet	Buzzer
60	Black metal	Magnet
61	Coppery metal wire	Buzzer
62	Green polymer	PCB
63	Semitransparent plastic	Diverter
64	Grey plastic	Diverter
65	Black plastic	Diverter
66	Semitransparent plastic gear	Diverter
67	Black metal	Spring
68	Gun metal	Steel ball
69	Lacteous plastic	Gasket

This Test Report is issued by the company subject to its General Conditions of Service printed overleaf. Attention is drawn to the limitations of liability, indemnification and jurisdictional issues defined therein. The results shown in this test report refer only to the sample(s) tested unless otherwise stated. This Test Report cannot be reproduced, except in full, without prior written permission of the company. Items marked with "n" or "m" means they are not accredited by CNAS or CMA, "s" means the item of subcontractor is not accredited by CNAS or CMA.

GUANGDONG WONDER TESTING INTERNATIONAL CO., LTD. No. 221 Jianshebei Road Huadu District, Guangzhou City, Guangdong Province, China, 510800

E-mail: wd@wdwonder.com Tel: 86-020-8689 0001 Fax: 86-020-8689 6998 Website: http://www.wdwonder.com

TEST REPORT

Report No.: WD2018010041EN

Date: Jan. 31, 2018

Page: 37 / 53

70	Grey plastic	Starting capacitor
71	Black colloid	Pouring sealant
72	White paper with black printing	Label
73	Silvery aluminium foil	Starting capacitor
74	Silvery metal shell	Electric machine
75	White plastic shell	Electric machine
76	Grey plastic with black printing	Wire jacket
77	Black plastic with white printing	Wire jacket
78	White plastic with black printing	Wire jacket
79	Red plastic with black printing	Wire jacket
80	Blue plastic	Wire jacket
81	Semitransparent plastic	Cable Ties
82	Lacteous plastic	Wire clip
83	Yellow sponge	Gasket
84	Black plastic	Fan blade
85	Gun metal	Supporting bearing
86	Black metal	Gasket
87	Black metal	Gasket
88	Silvery metal	Shaft support
89	White ceramic	Temperature controller
90	Brown wire varnished wire	Temperature controller
91	Gun metal	Sheet
92	Coppery metal	Coil
93	Blue plastic	Wire jacket
94	Black plastic	Tube
95	White fabric	Wire
96	Yellow plastic	Tape
97	Semitransparent plastic	Sheet
98	Silvery metal	Spring
99	Silvery metal	Pointed screw
100	Silvery metal	Flat screw
101	Silvery metal	Flat screw (big)
102	Silvery metal	Nut (big)
103	Silvery metal	Nut (big)
104	White plastic	Nut (small)
105	Silvery metal	Spring (small)

This Test Report is issued by the company subject to its General Conditions of Service printed overleaf. Attention is drawn to the limitations of liability, indemnification and jurisdictional issues defined therein. The results shown in this test report refer only to the sample(s) tested unless otherwise stated. This Test Report cannot be reproduced, except in full, without prior written permission of the company. Items marked with "n" or "m" means they are not accredited by CNAS or CMA, "s" means the item of subcontractor is not accredited by CNAS or CMA.

GUANGDONG WONDER TESTING | No. 221 Jianshebei Road Huadu District, Guangzhou City, Guangdong Province, China, 510800

INTERNATIONAL CO., LTD.

E-mail: wd@wdwonder.com Tel: 86-020-8689 0001 Fax: 86-020-8689 6998 Website: <http://www.wdwonder.com>

TEST REPORT

Report No.: WD2018010041EN

Date: Jan. 31, 2018

Page: 38 / 53

106	Silvery metal	Pendant
107	White plastic	Wire plug
108	Black plastic	Wire plug
109	Silvery metal	Pin
110	White plastic	Outer wire jacket
111	Black plastic	Outer wire jacket
112	Brown plastic	Wire jacket
113	Blue plastic	Wire jacket
114	Coppery metal	Core of cable
115	White plastic	Wire clip
116	Semitransparent blue plastic	Button box
117	Silvery metal	Male tab
118	Gun metal	Spring
119	Silvery metal	Sheet
120	Transparent plastic	Timer
121	Silvery metal	Screw
122	Red plastic	Wire jacket
123	Coppery metal	Sheet
124	Silvery metal	Contacto
125	Transparent plastic	Supporto
126	Silvery metal	Shaft support
127	Semitransparent plastic	Gear
128	Gun metal	Shrapnel
129	Silvery metal	Whirling arm
130	Silvery metal shell	Synchronous motor
131	White paper with black printing	Label
132	Black plastic	Wire jacket
133	Silvery metal	Core of cable
134	White plastic	Gear
135	Silvery metal	Axle
136	Black metal	Magnet
137	White plastic	Coil
138	Coppery metal	Core of cable
139	Grey plastic	Fan blade
140	Silvery metal	Orientation sheet
141	White plastic	Button

This Test Report is issued by the company subject to its General Conditions of Service printed overleaf. Attention is drawn to the limitations of liability, indemnification and jurisdictional issues defined therein. The results shown in this test report refer only to the sample(s) tested unless otherwise stated. This Test Report cannot be reproduced, except in full, without prior written permission of the company. Items marked with "n" or "m" means they are not accredited by CNAS or CMA, "s" means the item of subcontractor is not accredited by CNAS or CMA.

TEST REPORT

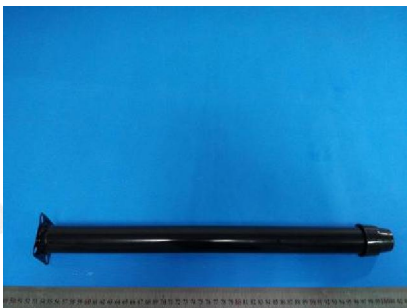
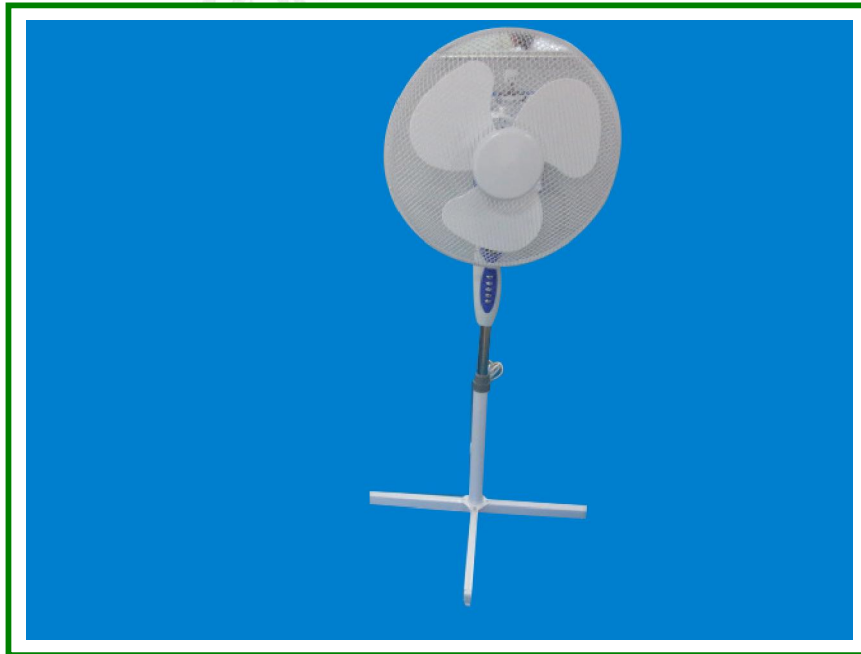
Report No.: WD2018010041EN

Date: Jan. 31, 2018

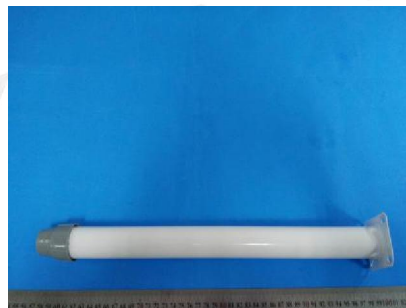
Page: 39 / 53

142	Coppery metal	Wafer
143	Golden metal	Sheet
144	Blue polymer	PCB

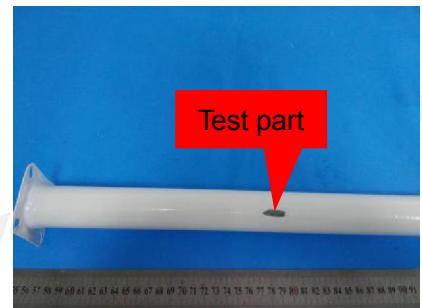
Photo of Sample:



1



2



3

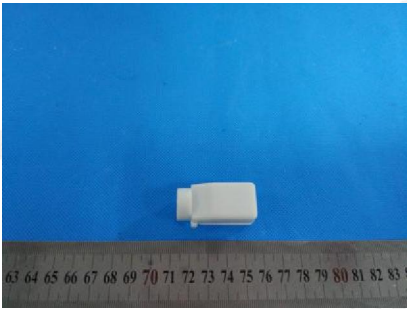
This Test Report is issued by the company subject to its General Conditions of Service printed overleaf. Attention is drawn to the limitations of liability, indemnification and jurisdictional issues defined therein. The results shown in this test report refer only to the sample(s) tested unless otherwise stated. This Test Report cannot be reproduced, except in full, without prior written permission of the company. Items marked with "n" or "m" means they are not accredited by CNAS or CMA, "s" means the item of subcontractor is not accredited by CNAS or CMA.

TEST REPORT

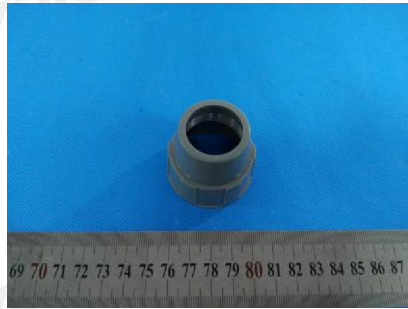
Report No.: WD2018010041EN

Date: Jan. 31, 2018

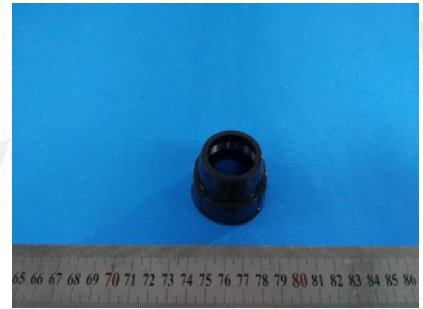
Page: 40 / 53



4



5



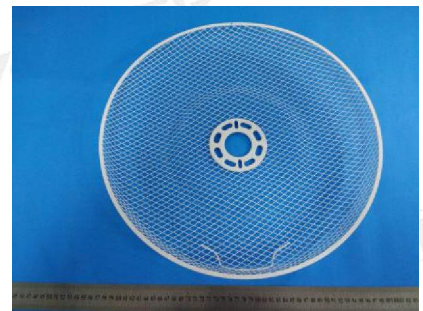
6



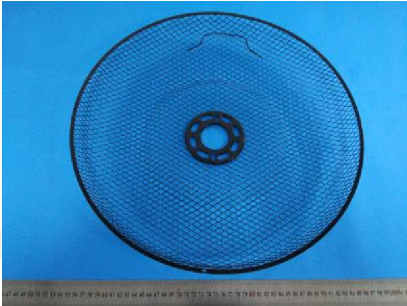
7



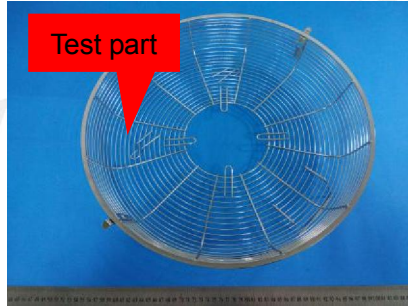
8



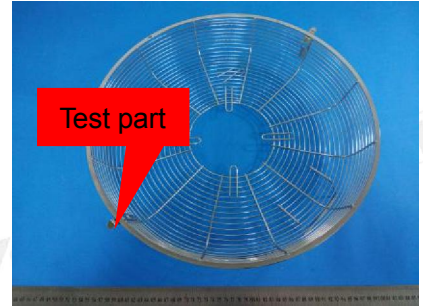
9



10



11



12



13



14



15

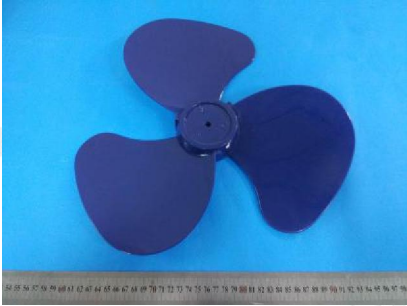
This Test Report is issued by the company subject to its General Conditions of Service printed overleaf. Attention is drawn to the limitations of liability, indemnification and jurisdictional issues defined therein. The results shown in this test report refer only to the sample(s) tested unless otherwise stated. This Test Report cannot be reproduced, except in full, without prior written permission of the company. Items marked with "n" or "m" means they are not accredited by CNAS or CMA, "s" means the item of subcontractor is not accredited by CNAS or CMA.

TEST REPORT

Report No.: WD2018010041EN

Date: Jan. 31, 2018

Page: 41 / 53



16



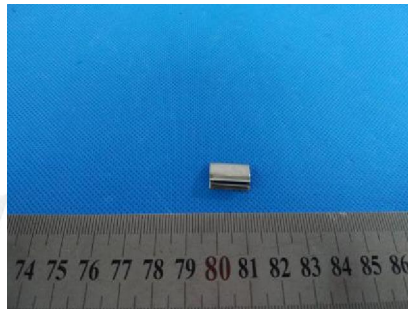
17



18



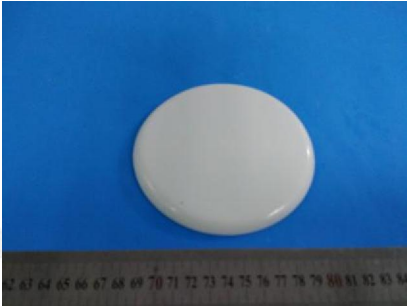
19



20



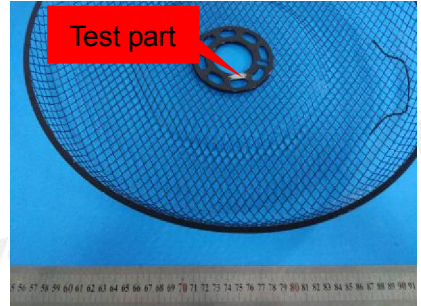
21



22



23



24



25



26



27

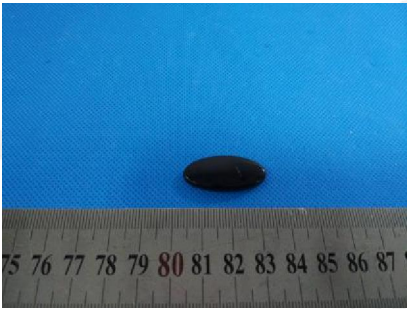
This Test Report is issued by the company subject to its General Conditions of Service printed overleaf. Attention is drawn to the limitations of liability, indemnification and jurisdictional issues defined therein. The results shown in this test report refer only to the sample(s) tested unless otherwise stated. This Test Report cannot be reproduced, except in full, without prior written permission of the company. Items marked with "n" or "m" means they are not accredited by CNAS or CMA, "s" means the item of subcontractor is not accredited by CNAS or CMA.

TEST REPORT

Report No.: WD2018010041EN

Date: Jan. 31, 2018

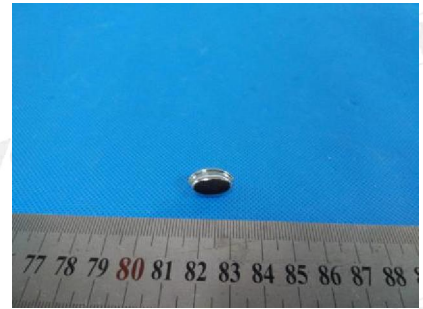
Page: 42 / 53



28



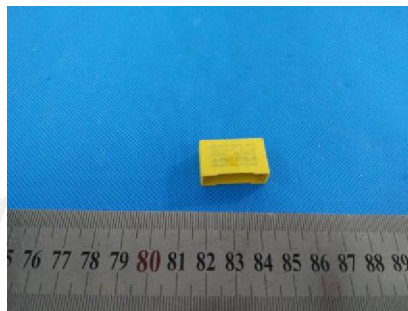
29



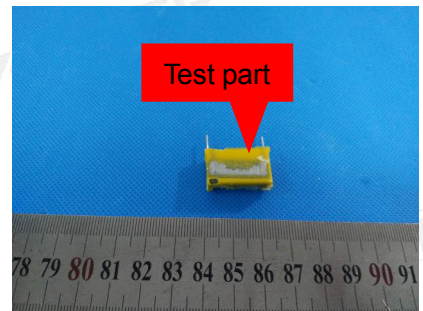
30



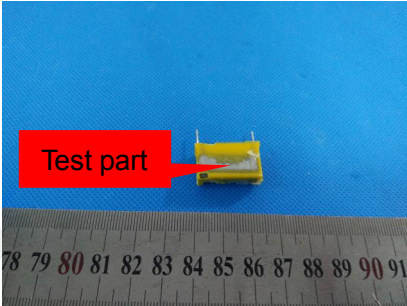
31



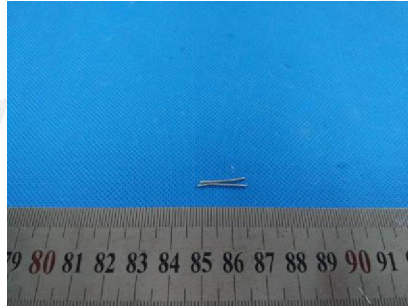
32



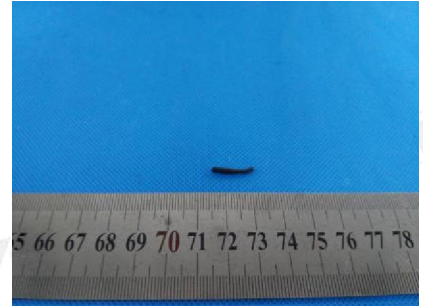
33



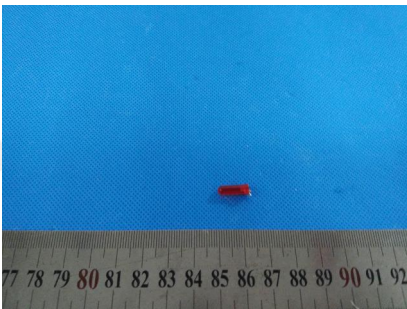
34



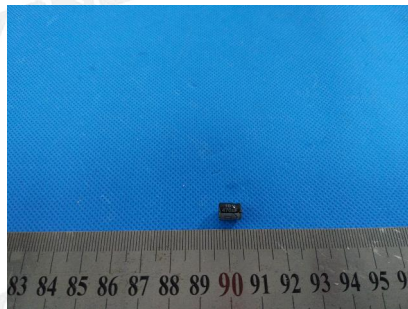
35



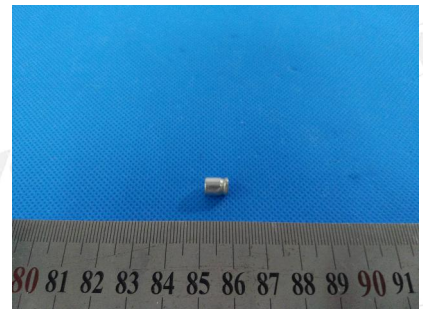
36



37



38



39

This Test Report is issued by the company subject to its General Conditions of Service printed overleaf. Attention is drawn to the limitations of liability, indemnification and jurisdictional issues defined therein. The results shown in this test report refer only to the sample(s) tested unless otherwise stated. This Test Report cannot be reproduced, except in full, without prior written permission of the company. Items marked with "n" or "m" means they are not accredited by CNAS or CMA, "s" means the item of subcontractor is not accredited by CNAS or CMA.

TEST REPORT

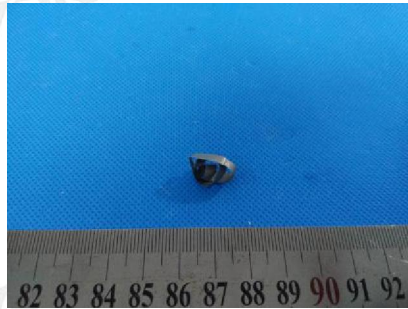
Report No.: WD2018010041EN

Date: Jan. 31, 2018

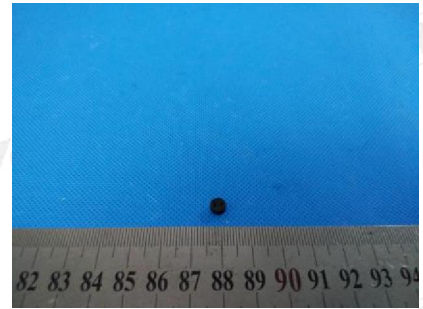
Page: 43 / 53



40



41



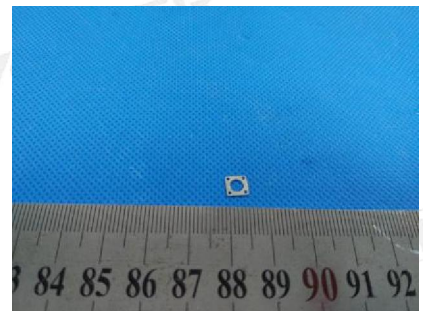
42



43



44



45



46



47



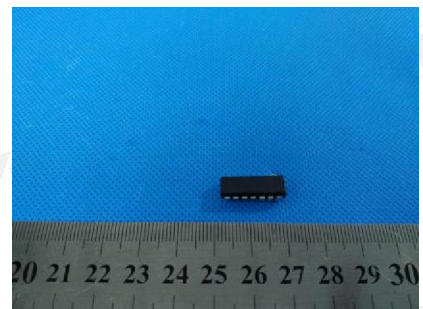
48



49



50



51

This Test Report is issued by the company subject to its General Conditions of Service printed overleaf. Attention is drawn to the limitations of liability, indemnification and jurisdictional issues defined therein. The results shown in this test report refer only to the sample(s) tested unless otherwise stated. This Test Report cannot be reproduced, except in full, without prior written permission of the company. Items marked with "n" or "m" means they are not accredited by CNAS or CMA, "s" means the item of subcontractor is not accredited by CNAS or CMA.

TEST REPORT

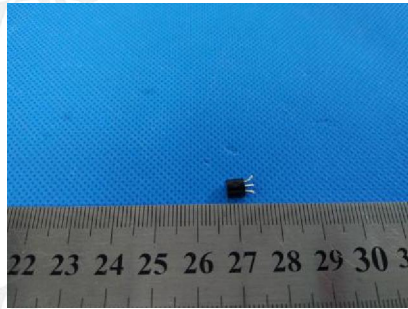
Report No.: WD2018010041EN

Date: Jan. 31, 2018

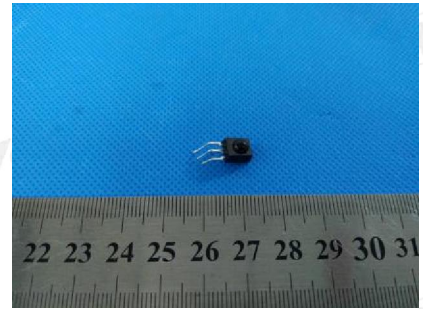
Page: 44 / 53



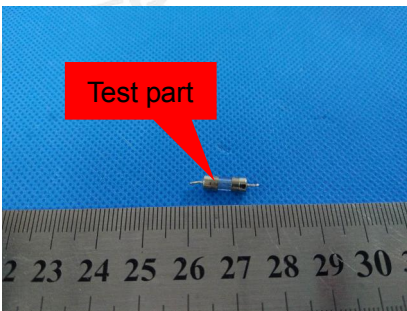
52



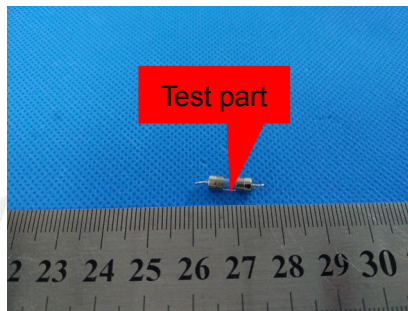
53



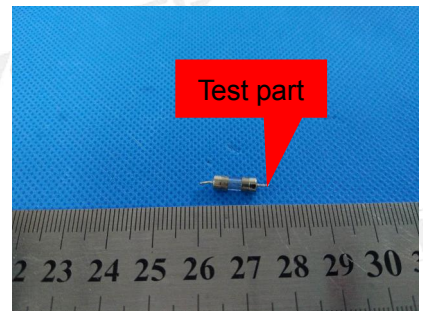
54



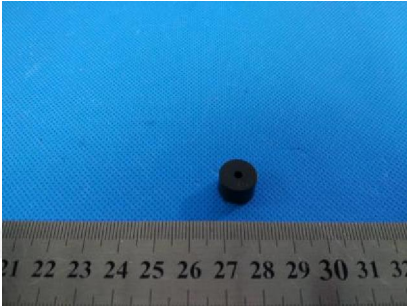
55



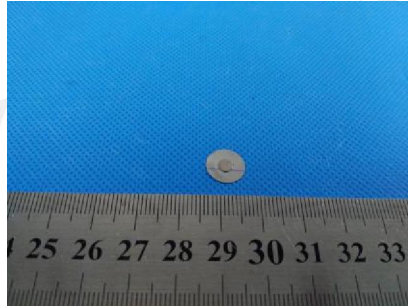
56



57



58



59



60



61



62



63

This Test Report is issued by the company subject to its General Conditions of Service printed overleaf. Attention is drawn to the limitations of liability, indemnification and jurisdictional issues defined therein. The results shown in this test report refer only to the sample(s) tested unless otherwise stated. This Test Report cannot be reproduced, except in full, without prior written permission of the company. Items marked with "n" or "m" means they are not accredited by CNAS or CMA, "s" means the item of subcontractor is not accredited by CNAS or CMA.

TEST REPORT

Report No.: WD2018010041EN

Date: Jan. 31, 2018

Page: 45 / 53



64



65



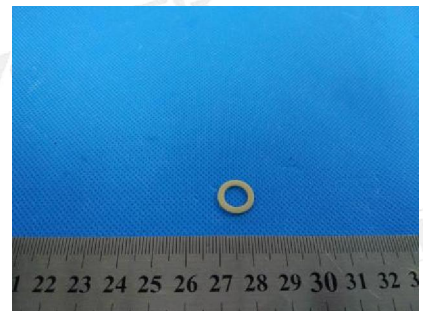
66



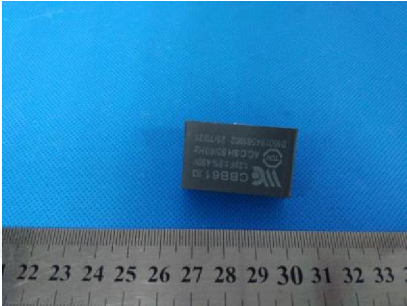
67



68



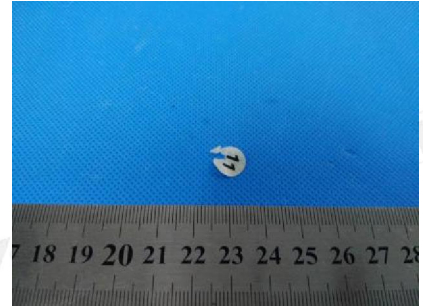
69



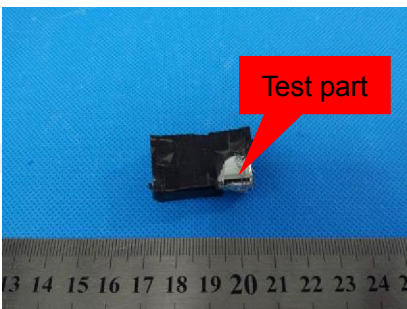
70



71



72



73



74



75

This Test Report is issued by the company subject to its General Conditions of Service printed overleaf. Attention is drawn to the limitations of liability, indemnification and jurisdictional issues defined therein. The results shown in this test report refer only to the sample(s) tested unless otherwise stated. This Test Report cannot be reproduced, except in full, without prior written permission of the company. Items marked with "n" or "m" means they are not accredited by CNAS or CMA, "s" means the item of subcontractor is not accredited by CNAS or CMA.

TEST REPORT

Report No.: WD2018010041EN

Date: Jan. 31, 2018

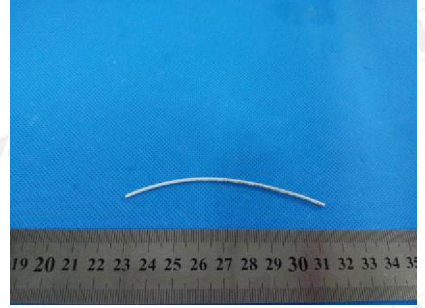
Page: 46 / 53



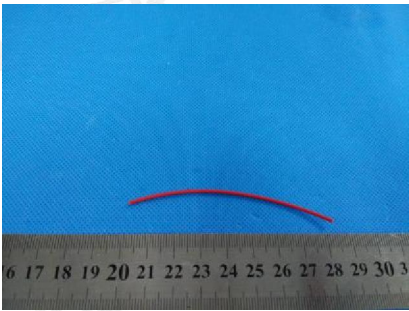
76



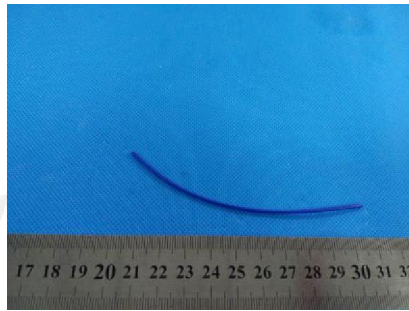
77



78



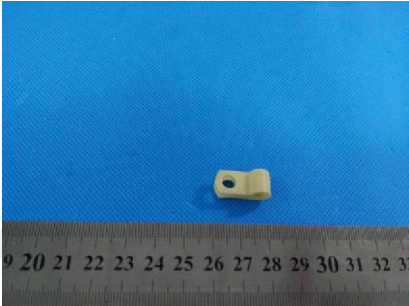
79



80



81



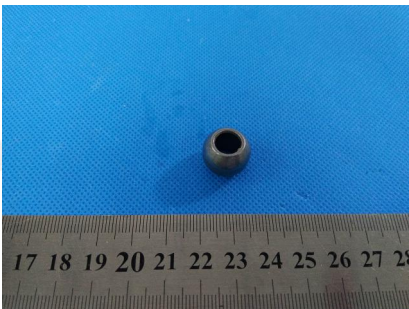
82



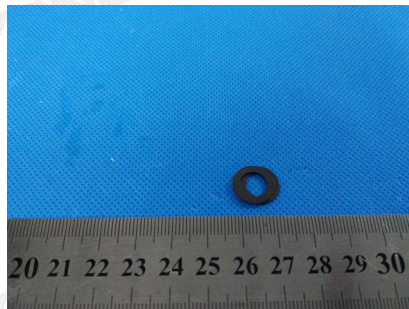
83



84



85



86



87

This Test Report is issued by the company subject to its General Conditions of Service printed overleaf. Attention is drawn to the limitations of liability, indemnification and jurisdictional issues defined therein. The results shown in this test report refer only to the sample(s) tested unless otherwise stated. This Test Report cannot be reproduced, except in full, without prior written permission of the company. Items marked with "n" or "m" means they are not accredited by CNAS or CMA, "s" means the item of subcontractor is not accredited by CNAS or CMA.

GUANGDONG WONDER TESTING INTERNATIONAL CO., LTD.

No. 221 Jianshebei Road Huadu District, Guangzhou City, Guangdong Province, China, 510800

E-mail: wd@wdwonder.com Tel: 86-020-8689 0001 Fax: 86-020-8689 6998 Website: http://www.wdwonder.com

TEST REPORT

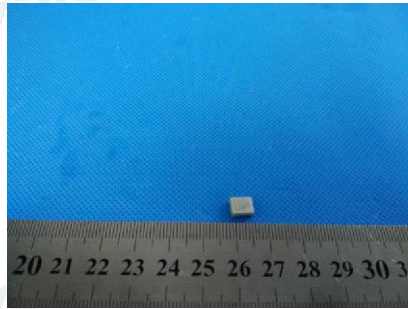
Report No.: WD2018010041EN

Date: Jan. 31, 2018

Page: 47 / 53



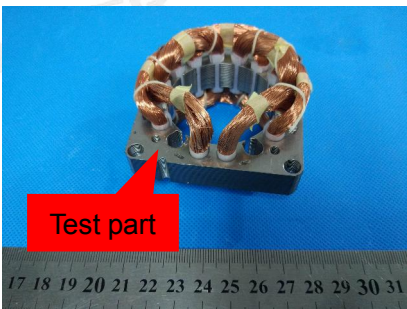
88



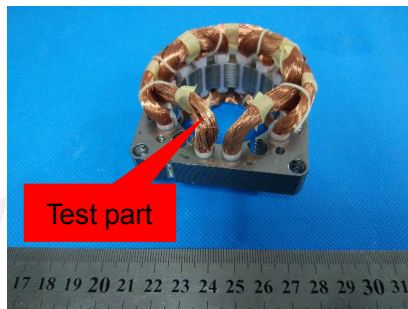
89



90



91



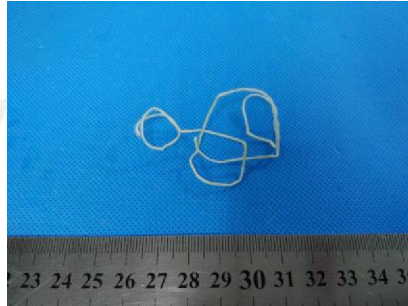
92



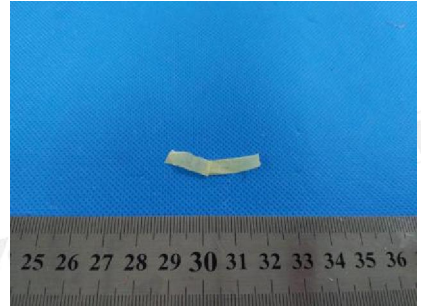
93



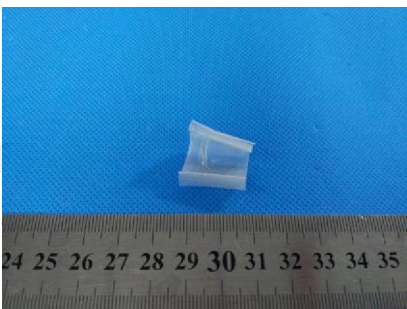
94



95



96



97



98



99

This Test Report is issued by the company subject to its General Conditions of Service printed overleaf. Attention is drawn to the limitations of liability, indemnification and jurisdictional issues defined therein. The results shown in this test report refer only to the sample(s) tested unless otherwise stated. This Test Report cannot be reproduced, except in full, without prior written permission of the company. Items marked with "n" or "m" means they are not accredited by CNAS or CMA, "s" means the item of subcontractor is not accredited by CNAS or CMA.

TEST REPORT

Report No.: WD2018010041EN

Date: Jan. 31, 2018

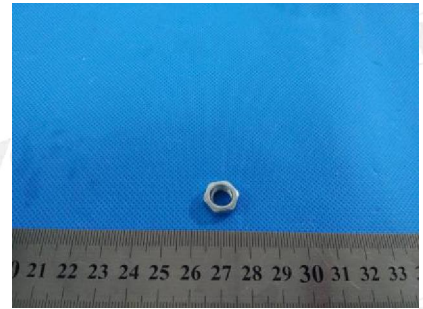
Page: 48 / 53



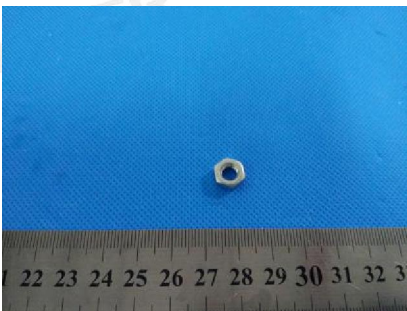
100



101



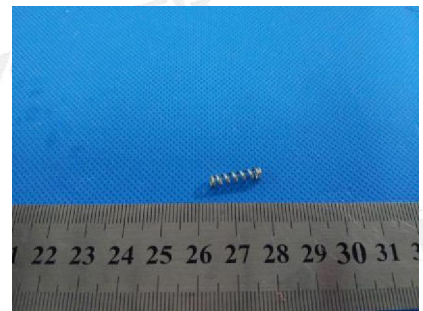
102



103



104



105



106



107



108



109



110



111

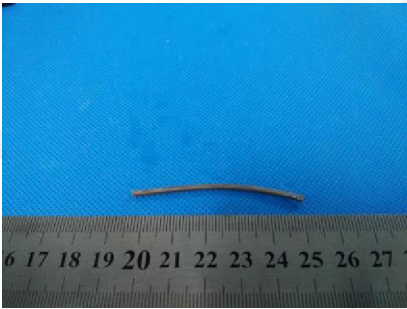
This Test Report is issued by the company subject to its General Conditions of Service printed overleaf. Attention is drawn to the limitations of liability, indemnification and jurisdictional issues defined therein. The results shown in this test report refer only to the sample(s) tested unless otherwise stated. This Test Report cannot be reproduced, except in full, without prior written permission of the company. Items marked with "n" or "m" means they are not accredited by CNAS or CMA, "s" means the item of subcontractor is not accredited by CNAS or CMA.

TEST REPORT

Report No.: WD2018010041EN

Date: Jan. 31, 2018

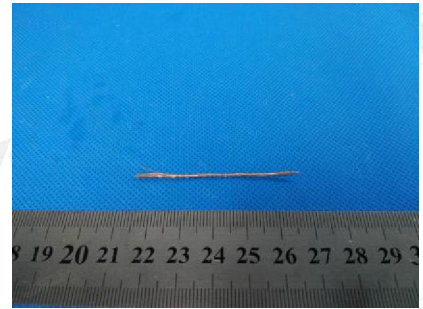
Page: 49 / 53



112



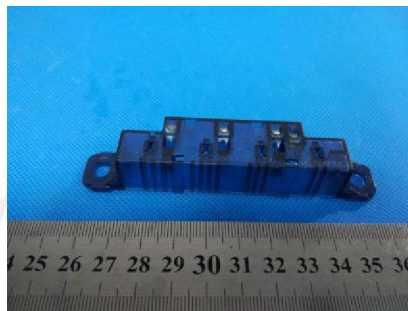
113



114



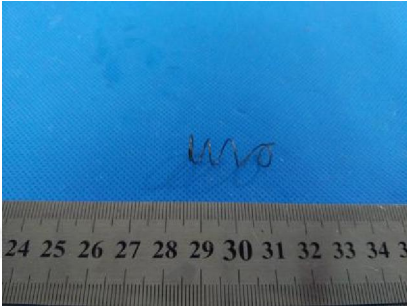
115



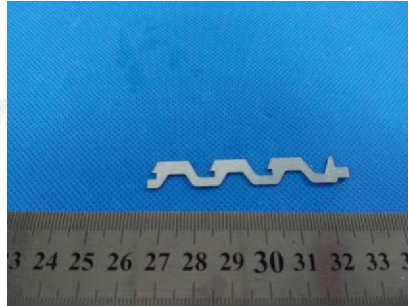
116



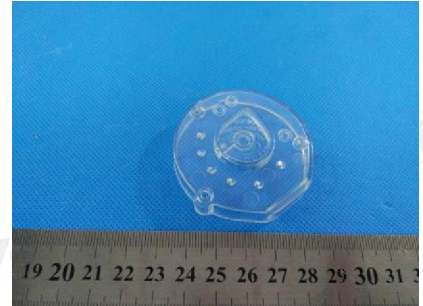
117



118



119



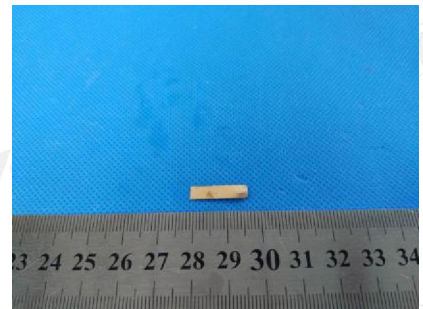
120



121



122



123

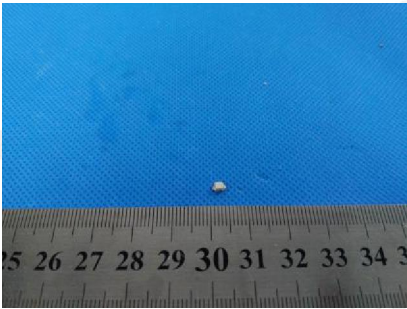
This Test Report is issued by the company subject to its General Conditions of Service printed overleaf. Attention is drawn to the limitations of liability, indemnification and jurisdictional issues defined therein. The results shown in this test report refer only to the sample(s) tested unless otherwise stated. This Test Report cannot be reproduced, except in full, without prior written permission of the company. Items marked with "n" or "m" means they are not accredited by CNAS or CMA, "s" means the item of subcontractor is not accredited by CNAS or CMA.

TEST REPORT

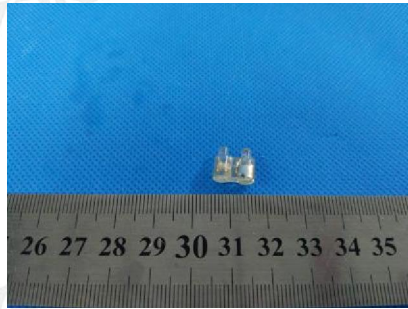
Report No.: WD2018010041EN

Date: Jan. 31, 2018

Page: 50 / 53



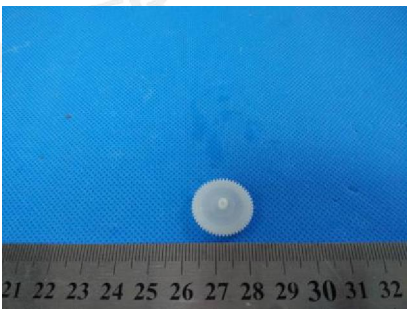
124



125



126



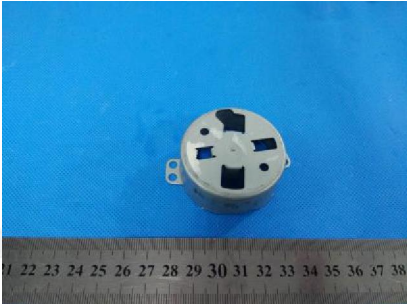
127



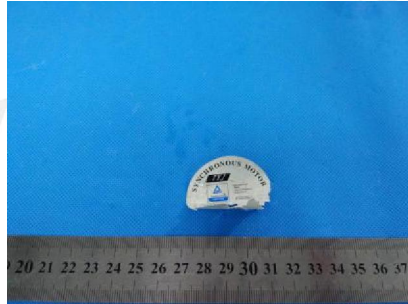
128



129



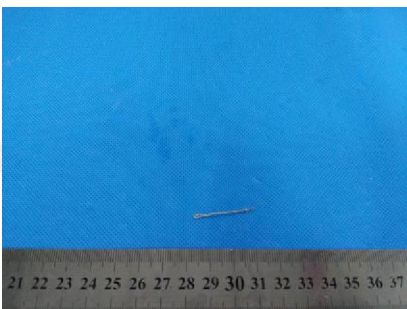
130



131



132



133



134



135

This Test Report is issued by the company subject to its General Conditions of Service printed overleaf. Attention is drawn to the limitations of liability, indemnification and jurisdictional issues defined therein. The results shown in this test report refer only to the sample(s) tested unless otherwise stated. This Test Report cannot be reproduced, except in full, without prior written permission of the company. Items marked with "n" or "m" means they are not accredited by CNAS or CMA, "s" means the item of subcontractor is not accredited by CNAS or CMA.

GUANGDONG WONDER TESTING INTERNATIONAL CO., LTD.

No. 221 Jianshebei Road Huadu District, Guangzhou City, Guangdong Province, China, 510800

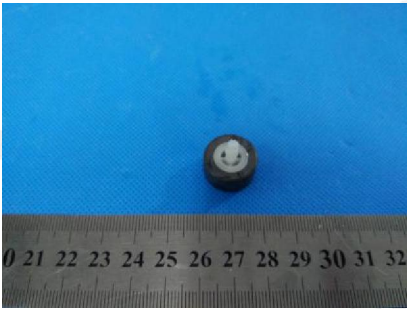
E-mail: wd@wdwonder.com Tel: 86-020-8689 0001 Fax: 86-020-8689 6998 Website: http://www.wdwonder.com

TEST REPORT

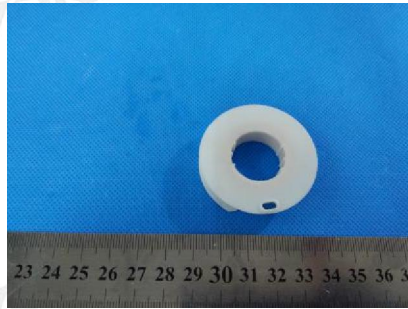
Report No.: WD2018010041EN

Date: Jan. 31, 2018

Page: 51 / 53



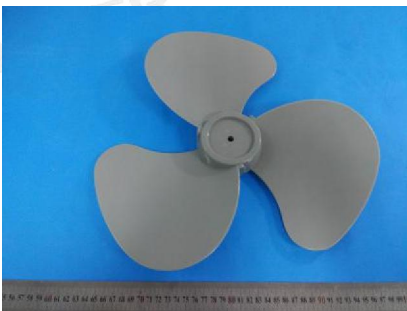
136



137



138



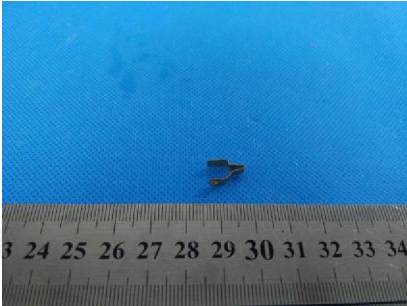
139



140



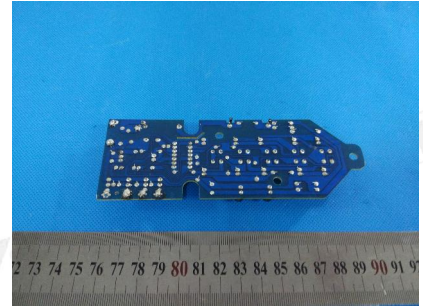
141



142



143



144

This Test Report is issued by the company subject to its General Conditions of Service printed overleaf. Attention is drawn to the limitations of liability, indemnification and jurisdictional issues defined therein. The results shown in this test report refer only to the sample(s) tested unless otherwise stated. This Test Report cannot be reproduced, except in full, without prior written permission of the company. Items marked with "n" or "m" means they are not accredited by CNAS or CMA, "s" means the item of subcontractor is not accredited by CNAS or CMA.

TEST REPORT

Report No.: WD2018010041EN

Date: Jan. 31, 2018

Page: 52 / 53

Main Model:

YF-40A, YF-12B3, YF-BO1201, YF-BO1202, YF-BO1203, YF-BO1204, YF-BO1205, YF-BO1206, YF-BO1207, YF-BO1208, YF-BO1209, YF-BO1210, YF-BO2011, YF-BO1811, YF-BO1611, YF-BO1411, YF-BO1211, YF-DE1601, FT-40E, YF-DE1602, MTF-161, FT-40, YF-DE1402, YF-DE1603, YF-DE1604, FT-40B, YF-DE1605, YF-DE1606, YF-DE1601-1, YF-DE1602-1, YF-DE1603-1, YF-DE1604-1, YF-DE1605-1, YF-DE1606-1, YF-DE1601-6, YF-DE1602-6, YF-DE1603-6, MTF-166, YF-DE1604-6, YF-DE1605-6, YF-DE1606-6, YF-DE1601-7, YF-DE1602-7, MTF-165, YF-DE1603-7, MTF-2666, YF-DE1604-7, YF-DE1605-7, YF-DE1606-7, YF-DE1601-5, YF-DE1602-5, YF-DE1603-5, YF-DE1604-5, YF-DE1605-5, YF-DE1606-5, YF-DE1401, YF-DE1402, YF-DE1403, YF-DE1404, YF-DE1405, YF-DE1406, YF-DE1201, FT-30E, YF-DE1202, MTF-121, FT-30, YF-DE1203, YF-DE1204, FT-30B, YF-DE1205, YF-DE1206, YF-DE1201-6, YF-DE1202-6, YF-DE1203-6, MTF-126, YF-DE1204-6, YF-DE1205-6, YF-DE1206-6, YF-DE1201-7, YF-DE1202-7, MTF-12, YF-DE1203-7, YF-DE1204-7, YF-DE1205-7, YF-DE1206-7, YF-DE901, FT-23E, YF-DE902, YF-DE601, FT-15, YF-DE602, YF-DE603, YF-ST1601, FS-40C, YF-ST1602, YF-ST1603, FS-40A, YF-ST1604, FS-40B, YF-ST1605, FS-40, YF-ST1606, YF-ST1607, YF-ST1608, YF-ST1609, YF-ST1610, YF-ST1611, YF-ST1612, YF-ST1613, YF-ST1614, YF-ST1615, YF-ST1616, YF-ST1617, YF-ST1618, YF-ST1619, YF-ST1620, YF-ST1621, YF-ST1622, YF-ST1623, YF-ST1624, YF-ST1625, YF-ST1626, YF-ST1627, FS-40R, YF-ST1628, YF-ST1629, YF-ST1630, YF-ST1631, YF-ST1632, YF-ST1633, YF-ST1634, YF-ST1635, YF-ST1636, YF-ST1638, YF-ST1639, YF-ST1640, YF-ST1641, YF-ST1602-6, YF-ST1605-6, YF-ST1606-6, MSF-2666, YF-ST1607-6, YF-ST1609-6, YF-ST1608-6, MSF-1666, YF-ST1609-6, YF-ST1619-6, YF-ST1622-6, YF-ST1627-6, YF-ST1628-6, YF-ST1631-6, YF-ST1602-7, YF-ST1605-7, YF-ST1606-7, YF-ST1607-7, MSF-1665, YF-ST1608-7, YF-ST1609-7, YF-ST1619-7, YF-ST1622-7, YF-ST1627-7, YF-ST1628-7, YF-ST1631-7, YF-ST1602-5, YF-ST1605-5, YF-ST1606-5, YF-ST1607-5, YF-ST1609-5, YF-ST1608-5, YF-ST1609-5, YF-ST1619-5, YF-ST1622-5, YF-ST1624-5, YF-ST1627-5, YF-ST1628-5, YF-ST1631-5, YF-ST1601-1, YF-ST1602-1, YF-ST1603-1, YF-ST1604-1, YF-ST1605-1, YF-ST1606-1, YF-ST1607-1, YF-ST1608-1, YF-ST1609-1, YF-ST1610-1, YF-ST1611-1, YF-ST1614-1, YF-ST1616-1, YF-ST1617-1, YF-ST1618-1, YF-ST1619-1, YF-ST1620-1, YF-ST1621-1, YF-ST1622-1, YF-ST1623-1, YF-ST1624-1, YF-ST1625-1, YF-ST1626-1, YF-ST1627-1, YF-ST1628-1, YF-ST1629-1, YF-ST1630-1, YF-ST1631-1, YF-ST1201, YF-ST1202, YF-ST1203, YF-ST1204, YF-ST1205, YF-ST1206, YF-ST1207, YF-ST1208, YF-ST1209, YF-ST1210, YF-ST1211, YF-ST1214, YF-ST1216, YF-ST1217, YF-ST1218, YF-ST1219, YF-ST1220, YF-ST1221, YF-ST1222, YF-ST1223, YF-ST1224, YF-ST1225, YF-ST1226, YF-ST1227, YF-ST1228, YF-ST1229, YF-ST1230, YF-ST1231, YF-ST1201-6, YF-ST1202-6, YF-ST1203-6, YF-ST1204-6, YF-ST1205-6, YF-ST1206-6, YF-ST1207-6, YF-ST1208-6, YF-ST1209-6, YF-ST1210-6, YF-ST1211-6, YF-ST1214-6, YF-ST1216-6, YF-ST1217-6, YF-ST1218-6, YF-ST1219-6, YF-ST1220-6, YF-ST1221-6, YF-ST1222-6, YF-ST1223-6, YF-ST1224-6, YF-ST1225-6, YF-ST1226-6, YF-ST1227-6, YF-ST1228-6, YF-ST1229-6, YF-ST1230-6, YF-ST1231-6, YF-ST1201-7, YF-ST1202-7, YF-ST1203-7, YF-ST1204-7, YF-ST1205-7, YF-ST1206-7, YF-ST1207-7, YF-ST1208-7, YF-ST1209-7, YF-ST1210-7, YF-ST1211-7, YF-ST1214-7, YF-ST1216-7, YF-ST1217-7, YF-ST1218-7, YF-ST1219-7, YF-ST1220-7, YF-ST1221-7, YF-ST1222-7, YF-ST1223-7, YF-ST1224-7, YF-ST1225-7, YF-ST1226-7, YF-ST1227-7, YF-ST1228-7, YF-ST1229-7, YF-ST1230-7, YF-ST1231-7, YF-ST1436, YF-ST1638, YF-ST1813, YF-ST1832, YF-ST23, YF-ST1839, YF-ST1830, YF-ST1832, YF-ST1834, YF-ST1833, YF-ST1835, YF-ST1001, YF-ST1002, YF-ST1003, YF-ST1201, YF-ST1202, YF-ST1203, YF-DE1401, YF-DE1402, YF-DE1403, YF-DE1404, YF-DE1405, YF-DE1406, YF-BO2012, YF-WA1601, YF-WA1602, YF-WA1603, YF-WA1604, YF-WA1605,

This Test Report is issued by the company subject to its General Conditions of Service printed overleaf. Attention is drawn to the limitations of liability, indemnification and jurisdictional issues defined therein. The results shown in this test report refer only to the sample(s) tested unless otherwise stated. This Test Report cannot be reproduced, except in full, without prior written permission of the company. Items marked with "n" or "m" means they are not accredited by CNAS or CMA, "s" means the item of subcontractor is not accredited by CNAS or CMA.

TEST REPORT

Report No.: WD2018010041EN

Date: Jan. 31, 2018

Page: 53 / 53

YF-WA1801,YF-WA1802,YF-WA1803,YF-WA1804,YF-WA1805,YF-WA1806,YF-AN1001,YF-AN1201,YF-AN601,YF-AN1601,YF-AN1602,YF-AN1603,YF-OR1601,YF-OR1602,YF-OR1801,YF-OR1802,YF-DE903,YF-FL2001,YF-FL1801,YF-FL1601,YF-FL1401,YF-FL1201,YF-TO2901,TF-29C1,YF-TO2902,TF-29C2,YF-TO2903,YF-TO2904,YF-TO2905,YF-TO2906,YF-TO2907,YF-TO2908,YF-TO2909,TF-29B,TF-29B1,TF-29R,YF-TO2910,YF-TO2911,YF-TO2912,YF-TO2913,YF-TO2914,YF-TO3201,YF-TO3202,YF-TO3203,YF-TO3204,YF-TO3205,YF-TO3206,YF-TO3207,YF-TO3208,YF-TO3209,YF-TO3210,YF-TO3211,YF-TO3212,YF-TO3212L,YF-TO3212D,YF-TO3213,YF-TO3214,YF-TO3614,YF-TO3601,YF-TO3602,YF-TO3603,YF-TO3605,YF-TO3606,YF-TO3607,YF-TO3610,YF-TO3611,YF-TO3612,YF-TO3612L,YF-TO3612D,YF-TO4605,YF-TO4607,YF-AN1601,YF-ST1436,YF-ST1638,YF-EX1201,YF-EX1001,YF-EX801,YF-EX601,YF-EX1002,YF-EX802,YF-EX1003,YF-EX803,YF-EX804,YF-EX604,,YF-DE903,YF-US601,YF-US401,YF-OR1601,YF-OR1801,YF-AN1001,YF-AN1201,YF-AL601,YF-AN901,YF-AL1001,YF-AL1201,YF-WA1601,YF-WA1602,YF-WA1603,YF-WA1604,YF-WA1605,YF-WA1401,YF-WA1402,YF-WA1801,YF-WA1802,YF-WA1803,YF-WA1804,YF-WA1805,YF-BO2012,YF-BO1602,YF-DE1401,YF-DE1402,YF-DE1403,YF-ST1001,YF-ST1201,YF-ST1835,YF-ST1834,YF-ST1833,YF-ST1832,YF-ST1831,YF-ST1830,YF-ST1823,YF-ST1839,YF-ST1838,,YF-ST1837,YF-ST1836,YF-ST1829,YF-ST1828,YF-ST1827,YF-ST1826,YF-ST1825,YF-ST1824,YF-ST1823,YF-ST1822,YF-ST1821,YF-ST1820,YF-ST1819,YF-ST1818,YF-ST1817,YF-ST1816,YF-ST1815,YF-ST1814,YF-ST1813,YF-ST1812,YF-ST1811,YF-ST1809,YF-ST1808,YF-ST1807,YF-ST1806,YF-ST1805,YF-ST1804,YF-ST1803,YF-ST1802,YF-ST1801,YF-ST1840,YF-ST1841,YF-ST1842,YF-ST1843,YF-ST1844,YF-ST1845,YF-ST1846,YF-ST1847,YF-ST1848,YF-ST1849,YF-ST1850,YF-ST1851,YF-ST1852,YF-ST1853,YF-ST1854,YF-ST1855,YF-ST1856,YF-ST1857,YF-ST1858,YF-ST1806-2,YF-ST1807-2,YF-ST1808-2,YF-ST1809-2,YF-ST1804-2,YF-ST1819-2,YF-ST1820-2,YF-ST1821-2,YF-ST1822-2,YF-ST1831-2,YF-ST1832-2,YF-ST1831,YF-ST1832,YF-18E,YF-18E3,YF-18E4,YF-18E5,YF-18T,YF-18CT,YF-18V,YF-18B,YF-183,YF-18A,YF-18A3,YF-40R,YF-29A,YF-29B,YF-29RB,YF-29DR

End of Report

This Test Report is issued by the company subject to its General Conditions of Service printed overleaf. Attention is drawn to the limitations of liability, indemnification and jurisdictional issues defined therein. The results shown in this test report refer only to the sample(s) tested unless otherwise stated. This Test Report cannot be reproduced, except in full, without prior written permission of the company. Items marked with "n" or "m" means they are not accredited by CNAS or CMA, "s" means the item of subcontractor is not accredited by CNAS or CMA.