

Test Report

No. ES150122017CE004

(The Submitted Sample Said To Be)

Sample Name : Hair Dryer, Curling iron, Hair straightener
Item/Style No. : RW601, RW300*(=A,B), RW1015, RW3001
Reference No. : RW601S, RW602, RW603, RW604, RW605, RW607*(=B, C), RW609*(=C, D),
RW610*(=A, B), RW611, RW617*(=A, B, AF, BF), RW618*(=A, B, BS),
RW619*(=E, F), RW621, RW623, RW625, RW631, RW633A*(=1, 2),
RW633B*(=1, 2, T), RW635*(=A, B), RW637, RW637S, RW639*(=A, B),
RW680*(=A, B), RW701, RW701F, RW703*(=C, D), RW706*(=B, C), RW708*(=A, B),
RW709*(=A, B), RW710*(=A, B, S), RW712*(=A, B), RW716*(=F, G), RW707, RW717,
RW727, RW718*(=C, D, CS), RW719*(=F, G), RW800*(=A, B), RW801*(=A, B),
RW803*(=A, B), RW805*(=A, B), RW806*(=A, B, SA, SB), RW807*(=A, B, AF, BF),
RW808*(=A, B), RW809, RW809F, RW810, RW810F, RW812, RW812F, RW816,
RW816F, RW5200*(=A, B), RW5200F*(=A, B), RW5300*(=A, B), RW5300F*(=A, B),
RW6100*(=A, B), RW6100F*(=A, B), RW6300*(=A, B), RW6300F*(=A, B),
RW6800T, RW6800TF, RW7110, RW7510*(=A, B), RW7610*(=A, B),
RW813*(=A, B, AF, BF), RW820*(=A, B, AF, BF),
RW827*(=A, B, AF, BF, LA, LB, LAF, LBF, S), RW828*(=B, C, BF, CF), RW829,
RW830*(=A, B, AF, BF), RW831*(=A, B, AF, BF), RW853*(=A, B, AF, BF),
RW861*(=C, D, CF, DF, S), RW862*(=A, B, AF, BF), RW868*(=A, B, AF, BF),
RW832*(=A, B, S), RW833*(=A, B, S), RW835*(=A, B, AF, BF), RW836*(=A, B, AF, BF),
RW837*(=A, B, AF, BF), RW839*(=A, B, AF, BF), RW851*(=A, B, AF, BF) RW1001,
RW1001A, RW1002, RW1003, RW1005, RW1010, RW1010A, RW1012*(=A, S, AS),
RW1017, RW1017F, RW2001, RW2001S, RW2001F, RW2002, RW2003, RW2005,
RW2006*(=A, B), RW1016, RW1018, RW1019, RW1020, RW1021, RW1022, RW1023,
RW1025, RW3002, RW3003, RW3005, RW3006, RW3007, RW3008, RW3009
Sample Received Date : January 22, 2015
Testing Completed Date : February 03, 2015

No. ES150122017CE004

- Test Requested : As requested by client, to evaluate the compliance of the submitted sample with the Directive 2011/65/EU of the European Parliament and of the Council of 8 June 2011 on the restriction of the use of certain hazardous substances in electrical and electronic equipment.
- Test Method : 1. Review was performed for the sample and the related Bill of Material submitted by the Applicant.
2. To refer to the standard IEC 62321:2008 Ed.1
- a) Screening by XRF Spectroscopy.
 - b) Wet chemical test
 - i) Determination of Lead, Cadmium and Mercury by ICP-OES / AAS.
 - ii) Determination of Hexavalent Chromium by UV-VIS.
 - iii) Determination of PBBs and PBDEs by GC/MS.
- Test Results : Please refer to next page (s).

Conclusion:

Basing on the test results obtained from the homogenous materials, the submitted sample **COMPLIES** with the requirements stated in the Annex II of RoHS Directive 2011/65/EU.

Signed for and on behalf of
Shenzhen EMTEK Co., Ltd .



Jaron

Manager
February 03, 2015

No. ES150122017CE004

TEST RESULTS:

No.	Sample description	Restricted substances	Results of EDXRF ⁽¹⁾	Results of Chemical Testing ⁽²⁾ (mg/kg)	Remark
1	Black hard plastic	Cd	BL	Not Tested	Non comment
		Pb	BL		
		Hg	BL		
		Cr	BL		
		Br	BL		
2	Purple transparent hard plastic	Cd	BL	Not Tested	Non comment
		Pb	BL		
		Hg	BL		
		Cr	BL		
		Br	BL		
3	Silver metal with black coating	Cd	BL	Not Tested	Non comment
		Pb	BL		
		Hg	BL		
		Cr	BL		
		Br	NA		
4	Silver metal	Cd	BL	Not Tested	Non comment
		Pb	BL		
		Hg	BL		
		Cr	BL		
		Br	NA		
5	Black hard plastic	Cd	BL	Not Tested	Non comment
		Pb	BL		
		Hg	BL		
		Cr	BL		
		Br	BL		
6	White hard plastic with plum coating	Cd	BL	Not Tested	Non comment
		Pb	BL		
		Hg	BL		
		Cr	BL		
		Br	BL		
7	Purple transparent hard plastic	Cd	BL	Not Tested	Non comment
		Pb	BL		
		Hg	BL		
		Cr	BL		
		Br	BL		

This Test Report is issued by the Company subject to its General Conditions of Service printed overleaf or available on request and accessible at <http://www.emtek.com.cn>. Attention is drawn to the limitations of liability, indemnification and jurisdictional policies defined therein. The results shown in this test report refer only to the sample(s) tested unless otherwise stated and the sample(s) are retained for 30 days only. This Test Report cannot be reproduced, except in full, without prior written permission of the Company.

No. ES150122017CE004

No.	Sample description	Restricted substances	Results of EDXRF ⁽¹⁾	Results of Chemical Testing ⁽²⁾ (mg/kg)	Remark
8	Black hard plastic	Cd	BL	Not Tested	Non comment
		Pb	BL		
		Hg	BL		
		Cr	BL		
		Br	BL		
9	Silver metal	Cd	BL	Not Tested	Non comment
		Pb	BL		
		Hg	BL		
		Cr	BL		
		Br	NA		
10	Black hard plastic	Cd	BL	Not Tested	Non comment
		Pb	BL		
		Hg	BL		
		Cr	BL		
		Br	BL		
11	Black hard plastic	Cd	BL	Not Tested	Non comment
		Pb	BL		
		Hg	BL		
		Cr	BL		
		Br	BL		
12	Silver metal with black coating	Cd	BL	Not Tested	Non comment
		Pb	BL		
		Hg	BL		
		Cr	BL		
		Br	NA		
13	Dull silver metal	Cd	BL	Not Tested	Non comment
		Pb	BL		
		Hg	BL		
		Cr	BL		
		Br	NA		
14	Silver metal	Cd	BL	Not Tested	Non comment
		Pb	BL		
		Hg	BL		
		Cr	BL		
		Br	NA		

This Test Report is issued by the Company subject to its General Conditions of Service printed overleaf or available on request and accessible at <http://www.emtek.com.cn>. Attention is drawn to the limitations of liability, indemnification and jurisdictional policies defined therein. The results shown in this test report refer only to the sample(s) tested unless otherwise stated and the sample(s) are retained for 30 days only. This Test Report cannot be reproduced, except in full, without prior written permission of the Company.

No. ES150122017CE004

No.	Sample description	Restricted substances	Results of EDXRF ⁽¹⁾	Results of Chemical Testing ⁽²⁾ (mg/kg)	Remark
15	White solid	Cd	BL	Not Tested	As declared by client, the material should be exempted for lead content requirement according to Annex clause 7(C)-I.
		Pb	OL		
		Hg	BL		
		Cr	BL		
		Br	BL		
16	Brown transparent soft plastic	Cd	BL	Not Tested	Non comment
		Pb	BL		
		Hg	BL		
		Cr	BL		
		Br	BL		
17	Silver metal	Cd	BL	Not Tested	Non comment
		Pb	BL		
		Hg	BL		
		Cr	BL		
		Br	NA		
18	Transparent soft plastic	Cd	BL	Not Tested	Non comment
		Pb	BL		
		Hg	BL		
		Cr	BL		
		Br	BL		
19	Red soft plastic	Cd	BL	Not Tested	Non comment
		Pb	BL		
		Hg	BL		
		Cr	BL		
		Br	BL		
20	Silver metal	Cd	BL	Not Tested	Non comment
		Pb	BL		
		Hg	BL		
		Cr	BL		
		Br	NA		
21	Green PCB	Cd	BL	Not Tested	Non comment
		Pb	BL		
		Hg	BL		
		Cr	BL		
		Br	BL		

This Test Report is issued by the Company subject to its General Conditions of Service printed overleaf or available on request and accessible at <http://www.emtek.com.cn>. Attention is drawn to the limitations of liability, indemnification and jurisdictional policies defined therein. The results shown in this test report refer only to the sample(s) tested unless otherwise stated and the sample(s) are retained for 30 days only. This Test Report cannot be reproduced, except in full, without prior written permission of the Company.

No. ES150122017CE004

No.	Sample description	Restricted substances	Results of EDXRF ⁽¹⁾	Results of Chemical Testing ⁽²⁾ (mg/kg)	Remark
22	Silver metal	Cd	BL	Not Tested	Non comment
		Pb	BL		
		Hg	BL		
		Cr	BL		
		Br	NA		
23	Red soft plastic	Cd	BL	Not Tested	Non comment
		Pb	BL		
		Hg	BL		
		Cr	BL		
		Br	BL		
24	Silver metal	Cd	BL	Not Tested	Non comment
		Pb	BL		
		Hg	BL		
		Cr	BL		
		Br	NA		
25	Black soft plastic	Cd	BL	Not Tested	Non comment
		Pb	BL		
		Hg	BL		
		Cr	BL		
		Br	BL		
26	Transparent hard plastic	Cd	BL	Not Tested	Non comment
		Pb	BL		
		Hg	BL		
		Cr	BL		
		Br	BL		
27	Silver metal	Cd	BL	Not Tested	Non comment
		Pb	BL		
		Hg	BL		
		Cr	BL		
		Br	NA		
28	Translucent hard plastic	Cd	BL	Not Tested	Non comment
		Pb	BL		
		Hg	BL		
		Cr	BL		
		Br	BL		

This Test Report is issued by the Company subject to its General Conditions of Service printed overleaf or available on request and accessible at <http://www.emtek.com.cn>. Attention is drawn to the limitations of liability, indemnification and jurisdictional policies defined therein. The results shown in this test report refer only to the sample(s) tested unless otherwise stated and the sample(s) are retained for 30 days only. This Test Report cannot be reproduced, except in full, without prior written permission of the Company.

No. ES150122017CE004

No.	Sample description	Restricted substances	Results of EDXRF ⁽¹⁾	Results of Chemical Testing ⁽²⁾ (mg/kg)	Remark
29	Translucent hard plastic	Cd	BL	Not Tested	Non comment
		Pb	BL		
		Hg	BL		
		Cr	BL		
		Br	BL		
30	Silver metal	Cd	BL	Not Tested	Non comment
		Pb	BL		
		Hg	BL		
		Cr	BL		
		Br	NA		
31	Silver metal	Cd	BL	Not Tested	Non comment
		Pb	BL		
		Hg	BL		
		Cr	BL		
		Br	NA		
32	Silver metal	Cd	BL	Not Tested	Non comment
		Pb	BL		
		Hg	BL		
		Cr	BL		
		Br	NA		
33	Transparent hard plastic	Cd	BL	PBBs: ND PBDEs: ND	Non comment
		Pb	BL		
		Hg	BL		
		Cr	BL		
		Br	X		
34	Silver metal	Cd	BL	Not Tested	Non comment
		Pb	BL		
		Hg	BL		
		Cr	BL		
		Br	NA		
35	Resistor	Cd	BL	Not Tested	Non comment
		Pb	BL		
		Hg	BL		
		Cr	BL		
		Br	BL		

This Test Report is issued by the Company subject to its General Conditions of Service printed overleaf or available on request and accessible at <http://www.emtek.com.cn>. Attention is drawn to the limitations of liability, indemnification and jurisdictional policies defined therein. The results shown in this test report refer only to the sample(s) tested unless otherwise stated and the sample(s) are retained for 30 days only. This Test Report cannot be reproduced, except in full, without prior written permission of the Company.

No. ES150122017CE004

No.	Sample description	Restricted substances	Results of EDXRF ⁽¹⁾	Results of Chemical Testing ⁽²⁾ (mg/kg)	Remark
36	Silver metal	Cd	BL	Not Tested	Non comment
		Pb	BL		
		Hg	BL		
		Cr	BL		
		Br	NA		
37	Diode	Cd	BL	PBBs: ND PBDEs: ND	Non comment
		Pb	BL		
		Hg	BL		
		Cr	BL		
		Br	X		
38	Silver metal	Cd	BL	Pb: 27510	As declared by client, the material should be exempted for lead content requirement according to Annex clause 6(c).
		Pb	OL		
		Hg	BL		
		Cr	BL		
		Br	NA		
39	White hard plastic	Cd	BL	PBBs: ND PBDEs: ND	Non comment
		Pb	BL		
		Hg	BL		
		Cr	BL		
		Br	X		
40	Black soft plastic	Cd	BL	Not Tested	Non comment
		Pb	BL		
		Hg	BL		
		Cr	BL		
		Br	BL		
41	Black soft plastic	Cd	BL	Not Tested	Non comment
		Pb	BL		
		Hg	BL		
		Cr	BL		
		Br	BL		
42	Brown soft plastic	Cd	BL	Not Tested	Non comment
		Pb	BL		
		Hg	BL		
		Cr	BL		
		Br	BL		

This Test Report is issued by the Company subject to its General Conditions of Service printed overleaf or available on request and accessible at <http://www.emtek.com.cn>. Attention is drawn to the limitations of liability, indemnification and jurisdictional policies defined therein. The results shown in this test report refer only to the sample(s) tested unless otherwise stated and the sample(s) are retained for 30 days only. This Test Report cannot be reproduced, except in full, without prior written permission of the Company.

No. ES150122017CE004

No.	Sample description	Restricted substances	Results of EDXRF ⁽¹⁾	Results of Chemical Testing ⁽²⁾ (mg/kg)	Remark
43	Copper metal	Cd	BL	Not Tested	Non comment
		Pb	BL		
		Hg	BL		
		Cr	BL		
		Br	NA		
44	Silver metal	Cd	BL	Not Tested	Non comment
		Pb	BL		
		Hg	BL		
		Cr	BL		
		Br	NA		
45	Black hard plastic	Cd	BL	Not Tested	Non comment
		Pb	BL		
		Hg	BL		
		Cr	BL		
		Br	BL		
46	Silver metal	Cd	BL	Not Tested	Non comment
		Pb	BL		
		Hg	BL		
		Cr	BL		
		Br	NA		
47	Black soft plastic	Cd	BL	Not Tested	Non comment
		Pb	BL		
		Hg	BL		
		Cr	BL		
		Br	BL		
48	Blue soft plastic	Cd	BL	Not Tested	Non comment
		Pb	BL		
		Hg	BL		
		Cr	BL		
		Br	BL		
49	Grey transparent hard plastic	Cd	BL	Not Tested	Non comment
		Pb	BL		
		Hg	BL		
		Cr	BL		
		Br	BL		

This Test Report is issued by the Company subject to its General Conditions of Service printed overleaf or available on request and accessible at <http://www.emtek.com.cn>. Attention is drawn to the limitations of liability, indemnification and jurisdictional policies defined therein. The results shown in this test report refer only to the sample(s) tested unless otherwise stated and the sample(s) are retained for 30 days only. This Test Report cannot be reproduced, except in full, without prior written permission of the Company.

No. ES150122017CE004

No.	Sample description	Restricted substances	Results of EDXRF ⁽¹⁾	Results of Chemical Testing ⁽²⁾ (mg/kg)	Remark
50	Red transparent hard plastic	Cd	BL	Not Tested	Non comment
		Pb	BL		
		Hg	BL		
		Cr	BL		
		Br	BL		
51	Purple transparent hard plastic	Cd	BL	Not Tested	Non comment
		Pb	BL		
		Hg	BL		
		Cr	BL		
		Br	BL		
52	Black hard plastic	Cd	BL	Not Tested	Non comment
		Pb	BL		
		Hg	BL		
		Cr	BL		
		Br	BL		
53	Brown hard plastic	Cd	BL	Not Tested	Non comment
		Pb	BL		
		Hg	BL		
		Cr	BL		
		Br	BL		
54	Dull silver metal	Cd	BL	Not Tested	Non comment
		Pb	BL		
		Hg	BL		
		Cr	BL		
		Br	NA		
55	Silver metal	Cd	BL	Not Tested	Non comment
		Pb	BL		
		Hg	BL		
		Cr	BL		
		Br	NA		
56	Copper metal	Cd	BL	Not Tested	Non comment
		Pb	BL		
		Hg	BL		
		Cr	BL		
		Br	NA		

This Test Report is issued by the Company subject to its General Conditions of Service printed overleaf or available on request and accessible at <http://www.emtek.com.cn>. Attention is drawn to the limitations of liability, indemnification and jurisdictional policies defined therein. The results shown in this test report refer only to the sample(s) tested unless otherwise stated and the sample(s) are retained for 30 days only. This Test Report cannot be reproduced, except in full, without prior written permission of the Company.

No. ES150122017CE004

No.	Sample description	Restricted substances	Results of EDXRF ⁽¹⁾	Results of Chemical Testing ⁽²⁾ (mg/kg)	Remark
57	White hard plastic with silver coating	Cd	BL	Not Tested	Non comment
		Pb	BL		
		Hg	BL		
		Cr	BL		
		Br	NA		
58	Black hard plastic	Cd	BL	PBBs: ND PBDEs: ND	Non comment
		Pb	BL		
		Hg	BL		
		Cr	BL		
		Br	X		
59	Black hard plastic	Cd	BL	PBBs: ND PBDEs: ND	Non comment
		Pb	BL		
		Hg	BL		
		Cr	BL		
		Br	X		
60	Silver metal with black coating	Cd	BL	Not Tested	Non comment
		Pb	BL		
		Hg	BL		
		Cr	BL		
		Br	NA		
61	Copper metal	Cd	BL	Not Tested	Non comment
		Pb	BL		
		Hg	BL		
		Cr	BL		
		Br	NA		
62	Silver metal	Cd	BL	Not Tested	Non comment
		Pb	BL		
		Hg	BL		
		Cr	BL		
		Br	NA		
63	Copper metal	Cd	BL	Not Tested	Non comment
		Pb	BL		
		Hg	BL		
		Cr	BL		
		Br	NA		

This Test Report is issued by the Company subject to its General Conditions of Service printed overleaf or available on request and accessible at <http://www.emtek.com.cn>. Attention is drawn to the limitations of liability, indemnification and jurisdictional policies defined therein. The results shown in this test report refer only to the sample(s) tested unless otherwise stated and the sample(s) are retained for 30 days only. This Test Report cannot be reproduced, except in full, without prior written permission of the Company.

No. ES150122017CE004

No.	Sample description	Restricted substances	Results of EDXRF ⁽¹⁾	Results of Chemical Testing ⁽²⁾ (mg/kg)	Remark
64	Copper metal with silver plating	Cd	BL	Not Tested	Non comment
		Pb	BL		
		Hg	BL		
		Cr	BL		
		Br	NA		
65	Black hard plastic	Cd	BL	Not Tested	Non comment
		Pb	BL		
		Hg	BL		
		Cr	BL		
		Br	BL		
66	Silver metal	Cd	BL	Not Tested	Non comment
		Pb	BL		
		Hg	BL		
		Cr	BL		
		Br	NA		
67	Silver metal	Cd	BL	C ⁶⁺ : Negative	Non comment
		Pb	BL		
		Hg	BL		
		Cr	X		
		Br	NA		
68	Black hard plastic	Cd	BL	Not Tested	Non comment
		Pb	BL		
		Hg	BL		
		Cr	BL		
		Br	BL		
69	Silver metal	Cd	BL	Not Tested	Non comment
		Pb	BL		
		Hg	BL		
		Cr	BL		
		Br	NA		
70	Silver metal	Cd	BL	Not Tested	Non comment
		Pb	BL		
		Hg	BL		
		Cr	BL		
		Br	NA		

This Test Report is issued by the Company subject to its General Conditions of Service printed overleaf or available on request and accessible at <http://www.emtek.com.cn>. Attention is drawn to the limitations of liability, indemnification and jurisdictional policies defined therein. The results shown in this test report refer only to the sample(s) tested unless otherwise stated and the sample(s) are retained for 30 days only. This Test Report cannot be reproduced, except in full, without prior written permission of the Company.

No. ES150122017CE004

No.	Sample description	Restricted substances	Results of EDXRF ⁽¹⁾	Results of Chemical Testing ⁽²⁾ (mg/kg)	Remark
71	Copper metal with silver plating	Cd	BL	Not Tested	Non comment
		Pb	BL		
		Hg	BL		
		Cr	BL		
		Br	NA		
72	Translucent hard plastic	Cd	BL	Not Tested	Non comment
		Pb	BL		
		Hg	BL		
		Cr	BL		
		Br	BL		
73	Black soft plastic	Cd	BL	Not Tested	Non comment
		Pb	BL		
		Hg	BL		
		Cr	BL		
		Br	BL		
74	Silver metal	Cd	BL	Not Tested	Non comment
		Pb	BL		
		Hg	BL		
		Cr	BL		
		Br	NA		
75	Silver metal	Cd	BL	Not Tested	Non comment
		Pb	BL		
		Hg	BL		
		Cr	BL		
		Br	NA		
76	Silver metal	Cd	BL	Not Tested	Non comment
		Pb	BL		
		Hg	BL		
		Cr	BL		
		Br	NA		
77	Silver metal	Cd	BL	Not Tested	Non comment
		Pb	BL		
		Hg	BL		
		Cr	BL		
		Br	NA		

This Test Report is issued by the Company subject to its General Conditions of Service printed overleaf or available on request and accessible at <http://www.emtek.com.cn>. Attention is drawn to the limitations of liability, indemnification and jurisdictional policies defined therein. The results shown in this test report refer only to the sample(s) tested unless otherwise stated and the sample(s) are retained for 30 days only. This Test Report cannot be reproduced, except in full, without prior written permission of the Company.

No. ES150122017CE004

No.	Sample description	Restricted substances	Results of EDXRF ⁽¹⁾	Results of Chemical Testing ⁽²⁾ (mg/kg)	Remark
78	Brown hard plastic	Cd	BL	Not Tested	Non comment
		Pb	BL		
		Hg	BL		
		Cr	BL		
		Br	BL		
79	Silver metal	Cd	BL	Not Tested	Non comment
		Pb	BL		
		Hg	BL		
		Cr	BL		
		Br	NA		
80	Dull silver metal	Cd	BL	Not Tested	Non comment
		Pb	BL		
		Hg	BL		
		Cr	BL		
		Br	NA		
81	Silver metal	Cd	BL	Not Tested	Non comment
		Pb	BL		
		Hg	BL		
		Cr	BL		
		Br	NA		
82	Yellow foam	Cd	BL	Not Tested	Non comment
		Pb	BL		
		Hg	BL		
		Cr	BL		
		Br	BL		
83	Black solid	Cd	BL	Not Tested	Non comment
		Pb	BL		
		Hg	BL		
		Cr	BL		
		Br	BL		
84	Grey solid	Cd	BL	Not Tested	Non comment
		Pb	BL		
		Hg	BL		
		Cr	BL		
		Br	BL		

This Test Report is issued by the Company subject to its General Conditions of Service printed overleaf or available on request and accessible at <http://www.emtek.com.cn>. Attention is drawn to the limitations of liability, indemnification and jurisdictional policies defined therein. The results shown in this test report refer only to the sample(s) tested unless otherwise stated and the sample(s) are retained for 30 days only. This Test Report cannot be reproduced, except in full, without prior written permission of the Company.

No. ES150122017CE004

No.	Sample description	Restricted substances	Results of EDXRF ⁽¹⁾	Results of Chemical Testing ⁽²⁾ (mg/kg)	Remark
85	Copper metal	Cd	BL	Not Tested	Non comment
		Pb	BL		
		Hg	BL		
		Cr	BL		
		Br	NA		
86	Bronze metal	Cd	BL	Not Tested	Non comment
		Pb	BL		
		Hg	BL		
		Cr	BL		
		Br	NA		
87	Translucent soft plastic	Cd	BL	Not Tested	Non comment
		Pb	BL		
		Hg	BL		
		Cr	BL		
		Br	BL		
88	Silver metal	Cd	BL	Not Tested	Non comment
		Pb	BL		
		Hg	BL		
		Cr	BL		
		Br	NA		
89	Grey solid	Cd	BL	Not Tested	Non comment
		Pb	BL		
		Hg	BL		
		Cr	BL		
		Br	BL		
90	Copper metal	Cd	BL	Not Tested	Non comment
		Pb	BL		
		Hg	BL		
		Cr	BL		
		Br	NA		
91	White glass fiber	Cd	BL	Not Tested	Non comment
		Pb	BL		
		Hg	BL		
		Cr	BL		
		Br	BL		

This Test Report is issued by the Company subject to its General Conditions of Service printed overleaf or available on request and accessible at <http://www.emtek.com.cn>. Attention is drawn to the limitations of liability, indemnification and jurisdictional policies defined therein. The results shown in this test report refer only to the sample(s) tested unless otherwise stated and the sample(s) are retained for 30 days only. This Test Report cannot be reproduced, except in full, without prior written permission of the Company.

No. ES150122017CE004

No.	Sample description	Restricted substances	Results of EDXRF ⁽¹⁾	Results of Chemical Testing ⁽²⁾ (mg/kg)	Remark
92	Capacitor	Cd	BL	Not Tested	Non comment
		Pb	BL		
		Hg	BL		
		Cr	BL		
		Br	BL		
93	Copper metal	Cd	BL	Not Tested	Non comment
		Pb	BL		
		Hg	BL		
		Cr	BL		
		Br	NA		
94	Silver metal	Cd	BL	Cr ⁶⁺ : Negative	Non comment
		Pb	BL		
		Hg	BL		
		Cr	X		
		Br	NA		
95	Yellow tape	Cd	BL	Not Tested	Non comment
		Pb	BL		
		Hg	BL		
		Cr	BL		
		Br	BL		
96	Translucent soft plastic	Cd	BL	Not Tested	Non comment
		Pb	BL		
		Hg	BL		
		Cr	BL		
		Br	BL		
97	Copper metal	Cd	BL	Not Tested	Non comment
		Pb	BL		
		Hg	BL		
		Cr	BL		
		Br	NA		
98	Brown hard plastic	Cd	BL	Not Tested	Non comment
		Pb	BL		
		Hg	BL		
		Cr	BL		
		Br	BL		

This Test Report is issued by the Company subject to its General Conditions of Service printed overleaf or available on request and accessible at <http://www.emtek.com.cn>. Attention is drawn to the limitations of liability, indemnification and jurisdictional policies defined therein. The results shown in this test report refer only to the sample(s) tested unless otherwise stated and the sample(s) are retained for 30 days only. This Test Report cannot be reproduced, except in full, without prior written permission of the Company.

No. ES150122017CE004

No.	Sample description	Restricted substances	Results of EDXRF ⁽¹⁾	Results of Chemical Testing ⁽²⁾ (mg/kg)	Remark
99	Silver metal	Cd	BL	Not Tested	Non comment
		Pb	BL		
		Hg	BL		
		Cr	BL		
		Br	NA		
100	Silver metal	Cd	BL	Cr ⁶⁺ : Negative	Non comment
		Pb	BL		
		Hg	BL		
		Cr	X		
		Br	NA		
101	Copper metal	Cd	BL	Not Tested	Non comment
		Pb	BL		
		Hg	BL		
		Cr	BL		
		Br	NA		
102	Green solid	Cd	BL	Not Tested	Non comment
		Pb	BL		
		Hg	BL		
		Cr	BL		
		Br	BL		
103	Translucent hard plastic	Cd	BL	Not Tested	Non comment
		Pb	BL		
		Hg	BL		
		Cr	BL		
		Br	BL		
104	Red paper board	Cd	BL	Not Tested	Non comment
		Pb	BL		
		Hg	BL		
		Cr	BL		
		Br	BL		
105	White soft plastic	Cd	BL	Not Tested	Non comment
		Pb	BL		
		Hg	BL		
		Cr	BL		
		Br	BL		

This Test Report is issued by the Company subject to its General Conditions of Service printed overleaf or available on request and accessible at <http://www.emtek.com.cn>. Attention is drawn to the limitations of liability, indemnification and jurisdictional policies defined therein. The results shown in this test report refer only to the sample(s) tested unless otherwise stated and the sample(s) are retained for 30 days only. This Test Report cannot be reproduced, except in full, without prior written permission of the Company.

No. ES150122017CE004

No.	Sample description	Restricted substances	Results of EDXRF ⁽¹⁾	Results of Chemical Testing ⁽²⁾ (mg/kg)	Remark
106	Blue glue	Cd	BL	Not Tested	Non comment
		Pb	BL		
		Hg	BL		
		Cr	BL		
		Br	BL		
107	Copper metal	Cd	BL	Not Tested	Non comment
		Pb	BL		
		Hg	BL		
		Cr	BL		
		Br	NA		
108	Silver metal	Cd	BL	Pb: 27510	As declared by client, the material should be exempted for lead content requirement according to Annex clause 6(c).
		Pb	OL		
		Hg	BL		
		Cr	BL		
		Br	NA		
109	White hard plastic	Cd	BL	PBBs: ND PBDEs: ND	Non comment
		Pb	BL		
		Hg	BL		
		Cr	BL		
		Br	X		
110	Black soft plastic	Cd	BL	Not Tested	Non comment
		Pb	BL		
		Hg	BL		
		Cr	BL		
		Br	BL		
111	Black soft plastic	Cd	BL	Not Tested	Non comment
		Pb	BL		
		Hg	BL		
		Cr	BL		
		Br	BL		
112	Black soft plastic	Cd	BL	Not Tested	Non comment
		Pb	BL		
		Hg	BL		
		Cr	BL		
		Br	BL		

This Test Report is issued by the Company subject to its General Conditions of Service printed overleaf or available on request and accessible at <http://www.emtek.com.cn>. Attention is drawn to the limitations of liability, indemnification and jurisdictional policies defined therein. The results shown in this test report refer only to the sample(s) tested unless otherwise stated and the sample(s) are retained for 30 days only. This Test Report cannot be reproduced, except in full, without prior written permission of the Company.

No. ES150122017CE004

No.	Sample description	Restricted substances	Results of EDXRF ⁽¹⁾	Results of Chemical Testing ⁽²⁾ (mg/kg)	Remark
113	Brown soft plastic	Cd	BL	Not Tested	Non comment
		Pb	BL		
		Hg	BL		
		Cr	BL		
		Br	BL		
114	Blue soft plastic	Cd	BL	Not Tested	Non comment
		Pb	BL		
		Hg	BL		
		Cr	BL		
		Br	BL		
115	Copper metal	Cd	BL	Not Tested	Non comment
		Pb	BL		
		Hg	BL		
		Cr	BL		
		Br	NA		
116	White hard plastic with silver plating	Cd	BL	Not Tested	Non comment
		Pb	BL		
		Hg	BL		
		Cr	BL		
		Br	BL		
117	Grey hard plastic	Cd	BL	Not Tested	Non comment
		Pb	BL		
		Hg	BL		
		Cr	BL		
		Br	BL		
118	Black hard plastic	Cd	BL	Not Tested	Non comment
		Pb	BL		
		Hg	BL		
		Cr	BL		
		Br	BL		
119	Black hard plastic	Cd	BL	Not Tested	Non comment
		Pb	BL		
		Hg	BL		
		Cr	BL		
		Br	BL		

This Test Report is issued by the Company subject to its General Conditions of Service printed overleaf or available on request and accessible at <http://www.emtek.com.cn>. Attention is drawn to the limitations of liability, indemnification and jurisdictional policies defined therein. The results shown in this test report refer only to the sample(s) tested unless otherwise stated and the sample(s) are retained for 30 days only. This Test Report cannot be reproduced, except in full, without prior written permission of the Company.

No. ES150122017CE004

No.	Sample description	Restricted substances	Results of EDXRF ⁽¹⁾	Results of Chemical Testing ⁽²⁾ (mg/kg)	Remark
120	Silver metal with black coating	Cd	BL	Not Tested	Non comment
		Pb	BL		
		Hg	BL		
		Cr	BL		
		Br	NA		
121	Grey hard plastic with silver coating	Cd	BL	PBBs: ND 1-9PBDEs: ND 10PBDE: 51	Non comment
		Pb	BL		
		Hg	BL		
		Cr	BL		
		Br	X		
122	Black hard plastic	Cd	BL	Not Tested	Non comment
		Pb	BL		
		Hg	BL		
		Cr	BL		
		Br	BL		
123	Mica sheet	Cd	BL	Not Tested	Non comment
		Pb	BL		
		Hg	BL		
		Cr	BL		
		Br	BL		
124	Silver metal	Cd	BL	Not Tested	Non comment
		Pb	BL		
		Hg	BL		
		Cr	BL		
		Br	NA		
125	White hard plastic	Cd	BL	Not Tested	Non comment
		Pb	BL		
		Hg	BL		
		Cr	BL		
		Br	BL		
126	Black hard plastic with silver coating	Cd	BL	Not Tested	Non comment
		Pb	BL		
		Hg	BL		
		Cr	BL		
		Br	BL		

This Test Report is issued by the Company subject to its General Conditions of Service printed overleaf or available on request and accessible at <http://www.emtek.com.cn>. Attention is drawn to the limitations of liability, indemnification and jurisdictional policies defined therein. The results shown in this test report refer only to the sample(s) tested unless otherwise stated and the sample(s) are retained for 30 days only. This Test Report cannot be reproduced, except in full, without prior written permission of the Company.

No. ES150122017CE004

No.	Sample description	Restricted substances	Results of EDXRF ⁽¹⁾	Results of Chemical Testing ⁽²⁾ (mg/kg)	Remark
127	Dull silver metal	Cd	BL	Not Tested	Non comment
		Pb	BL		
		Hg	BL		
		Cr	BL		
		Br	NA		
128	Black hard plastic	Cd	BL	Not Tested	Non comment
		Pb	BL		
		Hg	BL		
		Cr	BL		
		Br	BL		
129	Silver metal	Cd	BL	Cr ⁶⁺ : Negative	Non comment
		Pb	BL		
		Hg	BL		
		Cr	X		
		Br	NA		
130	Copper metal	Cd	BL	Not Tested	Non comment
		Pb	BL		
		Hg	BL		
		Cr	BL		
		Br	NA		
131	Silver metal	Cd	BL	Not Tested	Non comment
		Pb	BL		
		Hg	BL		
		Cr	BL		
		Br	NA		
132	Silver metal	Cd	BL	Cr ⁶⁺ : Negative	Non comment
		Pb	BL		
		Hg	BL		
		Cr	X		
		Br	NA		
133	Brown thread	Cd	BL	Not Tested	Non comment
		Pb	BL		
		Hg	BL		
		Cr	BL		
		Br	BL		

This Test Report is issued by the Company subject to its General Conditions of Service printed overleaf or available on request and accessible at <http://www.emtek.com.cn>. Attention is drawn to the limitations of liability, indemnification and jurisdictional policies defined therein. The results shown in this test report refer only to the sample(s) tested unless otherwise stated and the sample(s) are retained for 30 days only. This Test Report cannot be reproduced, except in full, without prior written permission of the Company.

No. ES150122017CE004

No.	Sample description	Restricted substances	Results of EDXRF ⁽¹⁾	Results of Chemical Testing ⁽²⁾ (mg/kg)	Remark
134	Black hard plastic	Cd	BL	Not Tested	Non comment
		Pb	BL		
		Hg	BL		
		Cr	BL		
		Br	BL		
135	Bronze metal	Cd	BL	Not Tested	Non comment
		Pb	BL		
		Hg	BL		
		Cr	BL		
		Br	NA		
136	Copper metal	Cd	BL	Not Tested	Non comment
		Pb	BL		
		Hg	BL		
		Cr	BL		
		Br	NA		
137	Silver metal	Cd	BL	Not Tested	Non comment
		Pb	BL		
		Hg	BL		
		Cr	BL		
		Br	NA		
138	Copper metal	Cd	BL	Not Tested	Non comment
		Pb	BL		
		Hg	BL		
		Cr	BL		
		Br	NA		
139	Yellow soft plastic	Cd	BL	Not Tested	Non comment
		Pb	BL		
		Hg	BL		
		Cr	BL		
		Br	BL		
140	Blue soft plastic	Cd	BL	Not Tested	Non comment
		Pb	BL		
		Hg	BL		
		Cr	BL		
		Br	BL		

This Test Report is issued by the Company subject to its General Conditions of Service printed overleaf or available on request and accessible at <http://www.emtek.com.cn>. Attention is drawn to the limitations of liability, indemnification and jurisdictional policies defined therein. The results shown in this test report refer only to the sample(s) tested unless otherwise stated and the sample(s) are retained for 30 days only. This Test Report cannot be reproduced, except in full, without prior written permission of the Company.

No. ES150122017CE004

No.	Sample description	Restricted substances	Results of EDXRF ⁽¹⁾	Results of Chemical Testing ⁽²⁾ (mg/kg)	Remark
141	White soft plastic	Cd	BL	Not Tested	Non comment
		Pb	BL		
		Hg	BL		
		Cr	BL		
		Br	BL		
142	Black soft plastic	Cd	BL	Not Tested	Non comment
		Pb	BL		
		Hg	BL		
		Cr	BL		
		Br	BL		
143	Silver metal	Cd	BL	Not Tested	Non comment
		Pb	BL		
		Hg	BL		
		Cr	BL		
		Br	NA		
144	Red soft plastic	Cd	BL	Not Tested	Non comment
		Pb	BL		
		Hg	BL		
		Cr	BL		
		Br	BL		
145	Green soft plastic	Cd	BL	Not Tested	Non comment
		Pb	BL		
		Hg	BL		
		Cr	BL		
		Br	BL		
146	Translucent soft plastic	Cd	BL	Not Tested	Non comment
		Pb	BL		
		Hg	BL		
		Cr	BL		
		Br	BL		
147	White glass fiber	Cd	BL	Not Tested	Non comment
		Pb	BL		
		Hg	BL		
		Cr	BL		
		Br	BL		

This Test Report is issued by the Company subject to its General Conditions of Service printed overleaf or available on request and accessible at <http://www.emtek.com.cn>. Attention is drawn to the limitations of liability, indemnification and jurisdictional policies defined therein. The results shown in this test report refer only to the sample(s) tested unless otherwise stated and the sample(s) are retained for 30 days only. This Test Report cannot be reproduced, except in full, without prior written permission of the Company.

No. ES150122017CE004

No.	Sample description	Restricted substances	Results of EDXRF ⁽¹⁾	Results of Chemical Testing ⁽²⁾ (mg/kg)	Remark
148	Black hard plastic	Cd	BL	PBBs: ND PBDEs: ND	Non comment
		Pb	BL		
		Hg	BL		
		Cr	BL		
		Br	X		
149	Dull silver metal	Cd	BL	Not Tested	Non comment
		Pb	BL		
		Hg	BL		
		Cr	BL		
		Br	NA		
150	Black hard plastic	Cd	BL	Not Tested	Non comment
		Pb	BL		
		Hg	BL		
		Cr	BL		
		Br	BL		
151	Dull silver metal	Cd	BL	Not Tested	Non comment
		Pb	BL		
		Hg	BL		
		Cr	BL		
		Br	NA		
152	Silver metal	Cd	BL	Not Tested	Non comment
		Pb	BL		
		Hg	BL		
		Cr	BL		
		Br	NA		
153	Silver metal	Cd	BL	Not Tested	Non comment
		Pb	BL		
		Hg	BL		
		Cr	BL		
		Br	NA		
154	Copper metal with silver plating	Cd	OL	Not Tested	The material should be exempted for cadmium content requirement according to Annex clause 8(b).
		Pb	BL		
		Hg	BL		
		Cr	BL		
		Br	NA		

This Test Report is issued by the Company subject to its General Conditions of Service printed overleaf or available on request and accessible at <http://www.emtek.com.cn>. Attention is drawn to the limitations of liability, indemnification and jurisdictional policies defined therein. The results shown in this test report refer only to the sample(s) tested unless otherwise stated and the sample(s) are retained for 30 days only. This Test Report cannot be reproduced, except in full, without prior written permission of the Company.

No. ES150122017CE004

No.	Sample description	Restricted substances	Results of EDXRF ⁽¹⁾	Results of Chemical Testing ⁽²⁾ (mg/kg)	Remark
155	White glass fiber	Cd	BL	Not Tested	Non comment
		Pb	BL		
		Hg	BL		
		Cr	BL		
		Br	BL		
156	Green PCB	Cd	BL	PBBs: ND PBDEs: ND	Non comment
		Pb	BL		
		Hg	BL		
		Cr	BL		
		Br	X		
157	Copper metal	Cd	BL	Not Tested	Non comment
		Pb	BL		
		Hg	BL		
		Cr	BL		
		Br	NA		
158	Silver metal	Cd	BL	Not Tested	Non comment
		Pb	BL		
		Hg	BL		
		Cr	BL		
		Br	NA		
159	Black hard plastic	Cd	BL	Not Tested	Non comment
		Pb	BL		
		Hg	BL		
		Cr	BL		
		Br	BL		
160	Black hard plastic	Cd	BL	Not Tested	Non comment
		Pb	BL		
		Hg	BL		
		Cr	BL		
		Br	BL		
161	Brown hard plastic	Cd	BL	Not Tested	Non comment
		Pb	BL		
		Hg	BL		
		Cr	BL		
		Br	BL		

This Test Report is issued by the Company subject to its General Conditions of Service printed overleaf or available on request and accessible at <http://www.emtek.com.cn>. Attention is drawn to the limitations of liability, indemnification and jurisdictional policies defined therein. The results shown in this test report refer only to the sample(s) tested unless otherwise stated and the sample(s) are retained for 30 days only. This Test Report cannot be reproduced, except in full, without prior written permission of the Company.

No. ES150122017CE004

No.	Sample description	Restricted substances	Results of EDXRF ⁽¹⁾	Results of Chemical Testing ⁽²⁾ (mg/kg)	Remark
162	Silver metal	Cd	BL	Not Tested	Non comment
		Pb	BL		
		Hg	BL		
		Cr	BL		
		Br	NA		
163	Dull silver metal	Cd	BL	Not Tested	Non comment
		Pb	BL		
		Hg	BL		
		Cr	BL		
		Br	NA		
164	Copper metal with silver plating	Cd	BL	Not Tested	Non comment
		Pb	BL		
		Hg	BL		
		Cr	BL		
		Br	NA		
165	Yellow hard plastic with black printing	Cd	BL	PBBs: ND PBDEs: ND	Non comment
		Pb	BL		
		Hg	BL		
		Cr	BL		
		Br	X		
166	Yellow glue	Cd	BL	Not Tested	Non comment
		Pb	BL		
		Hg	BL		
		Cr	BL		
		Br	BL		
167	Silver metal	Cd	BL	Not Tested	Non comment
		Pb	BL		
		Hg	BL		
		Cr	BL		
		Br	NA		
168	Silver metal	Cd	BL	Not Tested	Non comment
		Pb	BL		
		Hg	BL		
		Cr	BL		
		Br	NA		

This Test Report is issued by the Company subject to its General Conditions of Service printed overleaf or available on request and accessible at <http://www.emtek.com.cn>. Attention is drawn to the limitations of liability, indemnification and jurisdictional policies defined therein. The results shown in this test report refer only to the sample(s) tested unless otherwise stated and the sample(s) are retained for 30 days only. This Test Report cannot be reproduced, except in full, without prior written permission of the Company.

No. ES150122017CE004

No.	Sample description	Restricted substances	Results of EDXRF ⁽¹⁾	Results of Chemical Testing ⁽²⁾ (mg/kg)	Remark
169	Silver soft plastic	Cd	BL	Not Tested	Non comment
		Pb	BL		
		Hg	BL		
		Cr	BL		
		Br	BL		
170	Silver metal	Cd	BL	Not Tested	Non comment
		Pb	BL		
		Hg	BL		
		Cr	BL		
		Br	NA		
171	Resistor	Cd	BL	Not Tested	Non comment
		Pb	BL		
		Hg	BL		
		Cr	BL		
		Br	BL		
172	Diode	Cd	BL	PBBs: ND PBDEs: ND	Non comment
		Pb	BL		
		Hg	BL		
		Cr	BL		
		Br	X		
173	Silver metal	Cd	BL	Not Tested	Non comment
		Pb	BL		
		Hg	BL		
		Cr	BL		
		Br	NA		
174	Black hard plastic	Cd	BL	PBBs: ND PBDEs: ND	Non comment
		Pb	BL		
		Hg	BL		
		Cr	BL		
		Br	X		
175	Transparent hard plastic	Cd	BL	Not Tested	Non comment
		Pb	BL		
		Hg	BL		
		Cr	BL		
		Br	BL		

This Test Report is issued by the Company subject to its General Conditions of Service printed overleaf or available on request and accessible at <http://www.emtek.com.cn>. Attention is drawn to the limitations of liability, indemnification and jurisdictional policies defined therein. The results shown in this test report refer only to the sample(s) tested unless otherwise stated and the sample(s) are retained for 30 days only. This Test Report cannot be reproduced, except in full, without prior written permission of the Company.

No. ES150122017CE004

No.	Sample description	Restricted substances	Results of EDXRF ⁽¹⁾	Results of Chemical Testing ⁽²⁾ (mg/kg)	Remark
176	Silver metal	Cd	BL	Not Tested	Non comment
		Pb	BL		
		Hg	BL		
		Cr	BL		
		Br	NA		
177	Diode	Cd	BL	Not Tested	Non comment
		Pb	BL		
		Hg	BL		
		Cr	BL		
		Br	BL		
178	Silver metal	Cd	BL	Not Tested	Non comment
		Pb	BL		
		Hg	BL		
		Cr	BL		
		Br	NA		
179	Silver metal	Cd	BL	Not Tested	Non comment
		Pb	BL		
		Hg	BL		
		Cr	BL		
		Br	NA		
180	Capacitor	Cd	BL	Not Tested	Non comment
		Pb	BL		
		Hg	BL		
		Cr	BL		
		Br	BL		
181	White glass fiber	Cd	BL	Not Tested	Non comment
		Pb	BL		
		Hg	BL		
		Cr	BL		
		Br	BL		
182	Beige hard plastic	Cd	BL	Not Tested	Non comment
		Pb	BL		
		Hg	BL		
		Cr	BL		
		Br	BL		

This Test Report is issued by the Company subject to its General Conditions of Service printed overleaf or available on request and accessible at <http://www.emtek.com.cn>. Attention is drawn to the limitations of liability, indemnification and jurisdictional policies defined therein. The results shown in this test report refer only to the sample(s) tested unless otherwise stated and the sample(s) are retained for 30 days only. This Test Report cannot be reproduced, except in full, without prior written permission of the Company.

No. ES150122017CE004

No.	Sample description	Restricted substances	Results of EDXRF ⁽¹⁾	Results of Chemical Testing ⁽²⁾ (mg/kg)	Remark
183	Dull silver metal	Cd	BL	Not Tested	Non comment
		Pb	BL		
		Hg	BL		
		Cr	BL		
		Br	NA		
184	Black solid	Cd	BL	Not Tested	Non comment
		Pb	BL		
		Hg	BL		
		Cr	BL		
		Br	BL		
185	Silver metal	Cd	BL	Not Tested	Non comment
		Pb	BL		
		Hg	BL		
		Cr	BL		
		Br	NA		
186	Black solid	Cd	BL	Not Tested	Non comment
		Pb	BL		
		Hg	BL		
		Cr	BL		
		Br	BL		
187	Copper metal	Cd	BL	Not Tested	Non comment
		Pb	BL		
		Hg	BL		
		Cr	BL		
		Br	NA		
188	Bronze metal	Cd	BL	Not Tested	Non comment
		Pb	BL		
		Hg	BL		
		Cr	BL		
		Br	NA		
189	Bronze metal	Cd	BL	Not Tested	Non comment
		Pb	BL		
		Hg	BL		
		Cr	BL		
		Br	NA		

This Test Report is issued by the Company subject to its General Conditions of Service printed overleaf or available on request and accessible at <http://www.emtek.com.cn>. Attention is drawn to the limitations of liability, indemnification and jurisdictional policies defined therein. The results shown in this test report refer only to the sample(s) tested unless otherwise stated and the sample(s) are retained for 30 days only. This Test Report cannot be reproduced, except in full, without prior written permission of the Company.

No. ES150122017CE004

No.	Sample description	Restricted substances	Results of EDXRF ⁽¹⁾	Results of Chemical Testing ⁽²⁾ (mg/kg)	Remark
190	Black hard plastic	Cd	BL	Not Tested	Non comment
		Pb	BL		
		Hg	BL		
		Cr	BL		
		Br	BL		
191	Copper metal	Cd	BL	Not Tested	Non comment
		Pb	BL		
		Hg	BL		
		Cr	BL		
		Br	NA		
192	Silver metal	Cd	BL	Not Tested	Non comment
		Pb	BL		
		Hg	BL		
		Cr	BL		
		Br	NA		
193	Black solid	Cd	BL	Not Tested	Non comment
		Pb	BL		
		Hg	BL		
		Cr	BL		
		Br	BL		
194	Silver metal	Cd	BL	Not Tested	Non comment
		Pb	BL		
		Hg	BL		
		Cr	BL		
		Br	NA		
195	Black soft plastic	Cd	BL	Not Tested	Non comment
		Pb	BL		
		Hg	BL		
		Cr	BL		
		Br	BL		
196	Brown hard plastic	Cd	BL	Not Tested	Non comment
		Pb	BL		
		Hg	BL		
		Cr	BL		
		Br	BL		

This Test Report is issued by the Company subject to its General Conditions of Service printed overleaf or available on request and accessible at <http://www.emtek.com.cn>. Attention is drawn to the limitations of liability, indemnification and jurisdictional policies defined therein. The results shown in this test report refer only to the sample(s) tested unless otherwise stated and the sample(s) are retained for 30 days only. This Test Report cannot be reproduced, except in full, without prior written permission of the Company.

No. ES150122017CE004

No.	Sample description	Restricted substances	Results of EDXRF ⁽¹⁾	Results of Chemical Testing ⁽²⁾ (mg/kg)	Remark
197	Light brown hard plastic	Cd	BL	Not Tested	Non comment
		Pb	BL		
		Hg	BL		
		Cr	BL		
		Br	BL		
198	Silver metal	Cd	BL	Not Tested	Non comment
		Pb	BL		
		Hg	BL		
		Cr	BL		
		Br	NA		
199	Silver metal	Cd	BL	Cr ⁶⁺ : Negative	Non comment
		Pb	BL		
		Hg	BL		
		Cr	X		
		Br	NA		
200	Copper metal	Cd	BL	Not Tested	Non comment
		Pb	BL		
		Hg	BL		
		Cr	BL		
		Br	NA		

This Test Report is issued by the Company subject to its General Conditions of Service printed overleaf or available on request and accessible at <http://www.emtek.com.cn>. Attention is drawn to the limitations of liability, indemnification and jurisdictional policies defined therein. The results shown in this test report refer only to the sample(s) tested unless otherwise stated and the sample(s) are retained for 30 days only. This Test Report cannot be reproduced, except in full, without prior written permission of the Company.

No. ES150122017CE004

Remark: (1) ① Results are obtained by XRF for primary screening, and further wet chemical testing by ICP-OES / AAS (for Cd, Pb, Hg), UV-VIS (for Cr(VI)) and GC/MS (for PBBs, PBDEs) is recommended to be performed, if an inconclusive result was found (as "X" in below table)(unit: mg/kg).

② OL = Over Limit, BL = Below Limit, X = Inconclusive, NA= Not Applicable.

③ The XRF screening test for RoHS elements – The reading may be different to the actual content in the sample be of non-uniformity composition.

Element	Polymer	Metal	Composite Materials
Cd	$BL \leq (70-3\sigma) < X < (130+3\sigma) \leq OL$	$BL \leq (70-3\sigma) < X < (130+3\sigma) \leq OL$	$LOD < X < (150+3\sigma) \leq OL$
Pb	$BL \leq (700-3\sigma) < X < (1300+3\sigma) \leq OL$	$BL \leq (700-3\sigma) < X < (1300+3\sigma) \leq OL$	$BL \leq (500-3\sigma) < X < (1500+3\sigma) \leq OL$
Hg	$BL \leq (700-3\sigma) < X < (1300+3\sigma) \leq OL$	$BL \leq (700-3\sigma) < X < (1300+3\sigma) \leq OL$	$BL \leq (500-3\sigma) < X < (1500+3\sigma) \leq OL$
Br	$BL \leq (300-3\sigma) < X$	NA	$BL \leq (250-3\sigma) < X$
Cr	$BL \leq (700-3\sigma) < X$	$BL \leq (700-3\sigma) < X$	$BL \leq (500-3\sigma) < X$

(2) ① mg/kg = ppm = 0.0001%, ND = Not Detected (Less than method detection limit).

② Unit and Method Detection Limit (MDL) in wet chemical test.

Test items	Pb	Cd	Hg	Cr ⁶⁺ (Non-metal)	PBBs(single)	PBDEs(single)
Unit	mg/kg	mg/kg	mg/kg	mg/kg	mg/kg	mg/kg
MDL	2	2	2	2	5	5

③ According to IEC 62321:2008, result on Cr⁶⁺ for metal sample is shown as Positive/Negative. Negative = Absence of Cr⁶⁺ coating, Positive = Presence of Cr⁶⁺ coating. Storage condition and production date of the tested sample are unavailable and thus results of Cr⁶⁺ represent status of the sample at the time of testing.

No. ES150122017CE004

Photo Appendix

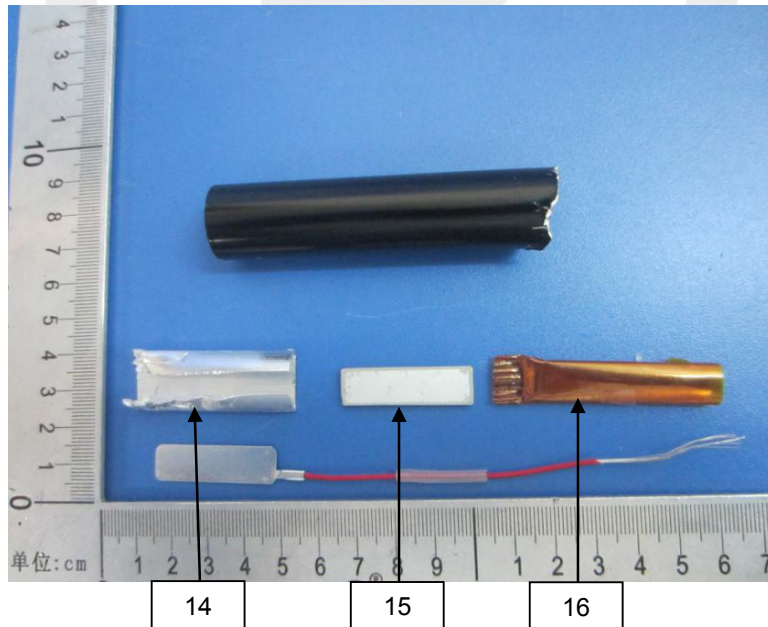
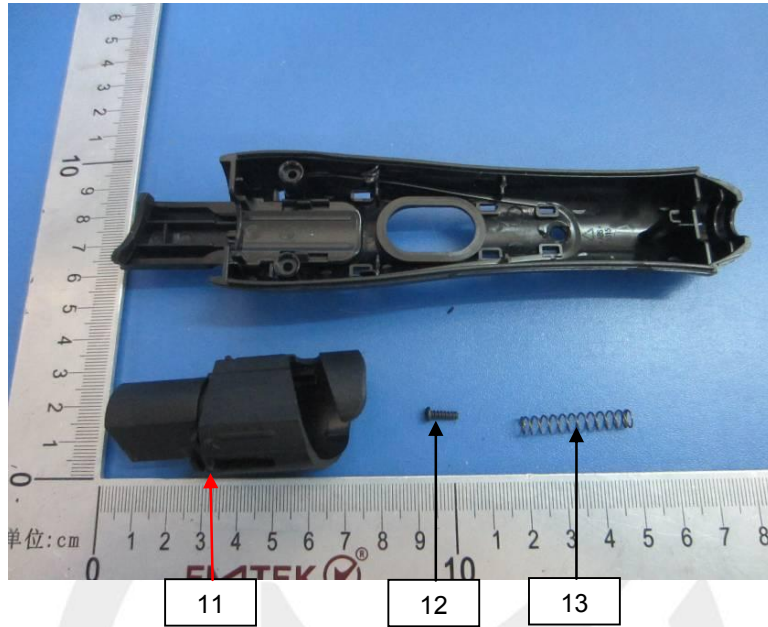


No. ES150122017CE004



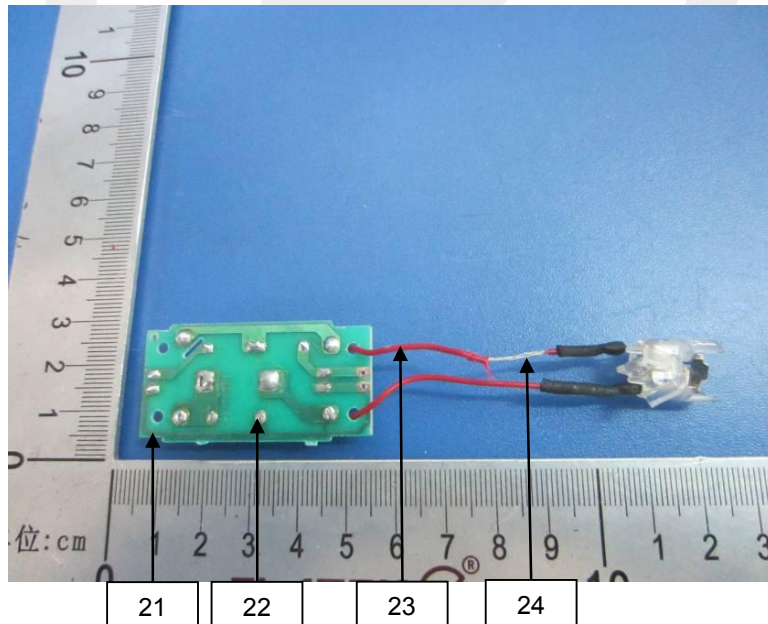
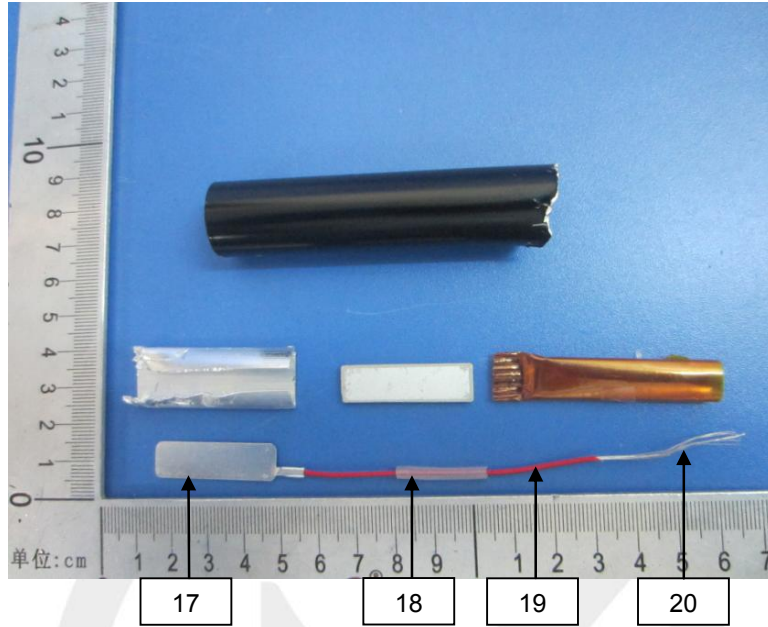
This Test Report is issued by the Company subject to its General Conditions of Service printed overleaf or available on request and accessible at <http://www.emtek.com.cn>. Attention is drawn to the limitations of liability, indemnification and jurisdictional policies defined therein. The results shown in this test report refer only to the sample(s) tested unless otherwise stated and the sample(s) are retained for 30 days only. This Test Report cannot be reproduced, except in full, without prior written permission of the Company.

No. ES150122017CE004

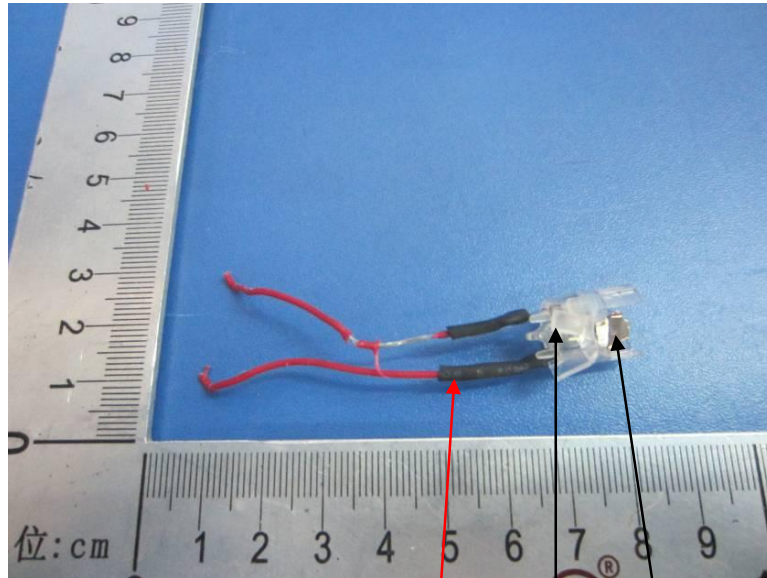


This Test Report is issued by the Company subject to its General Conditions of Service printed overleaf or available on request and accessible at <http://www.emtek.com.cn>. Attention is drawn to the limitations of liability, indemnification and jurisdictional policies defined therein. The results shown in this test report refer only to the sample(s) tested unless otherwise stated and the sample(s) are retained for 30 days only. This Test Report cannot be reproduced, except in full, without prior written permission of the Company.

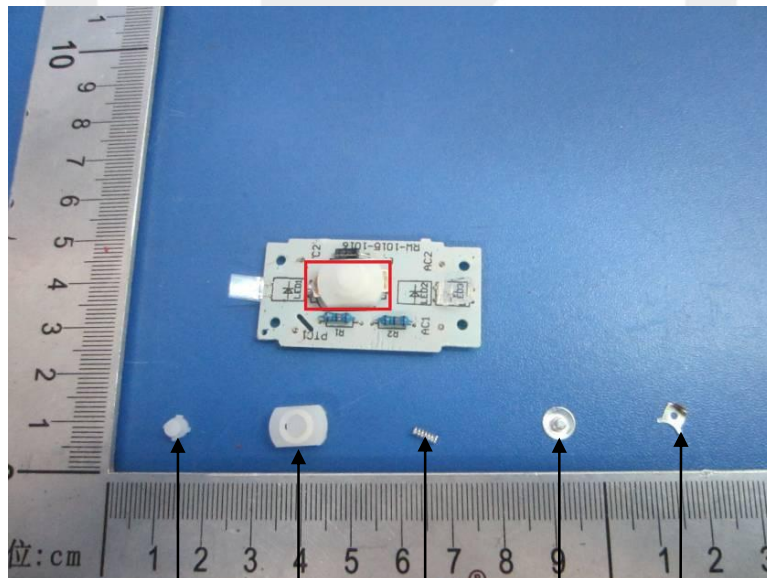
No. ES150122017CE004



No. ES150122017CE004

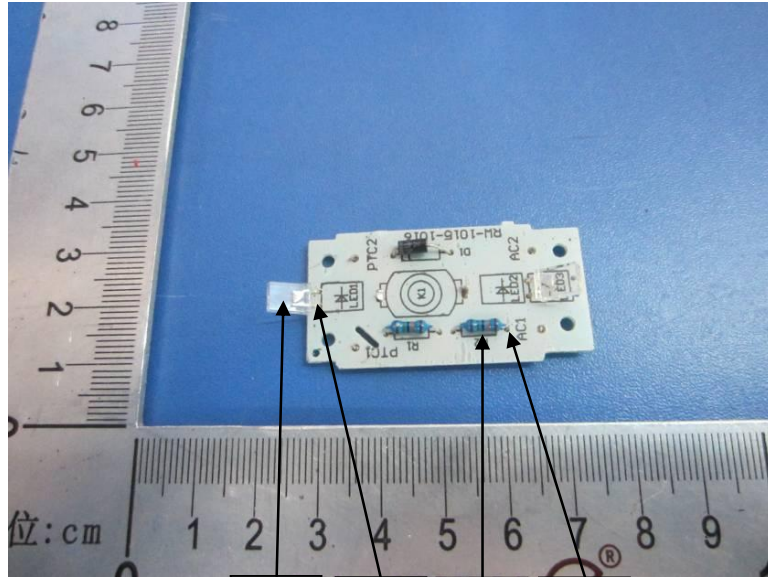


25 26 27

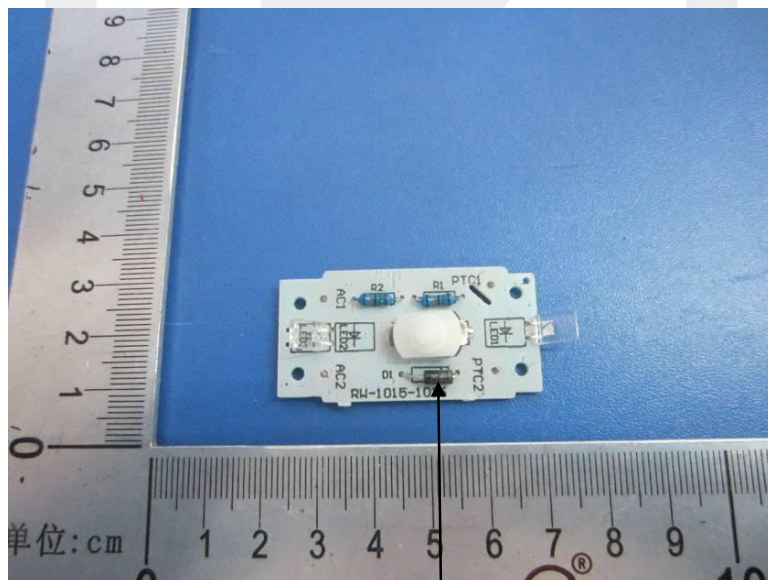


28 29 30 31 32

No. ES150122017CE004

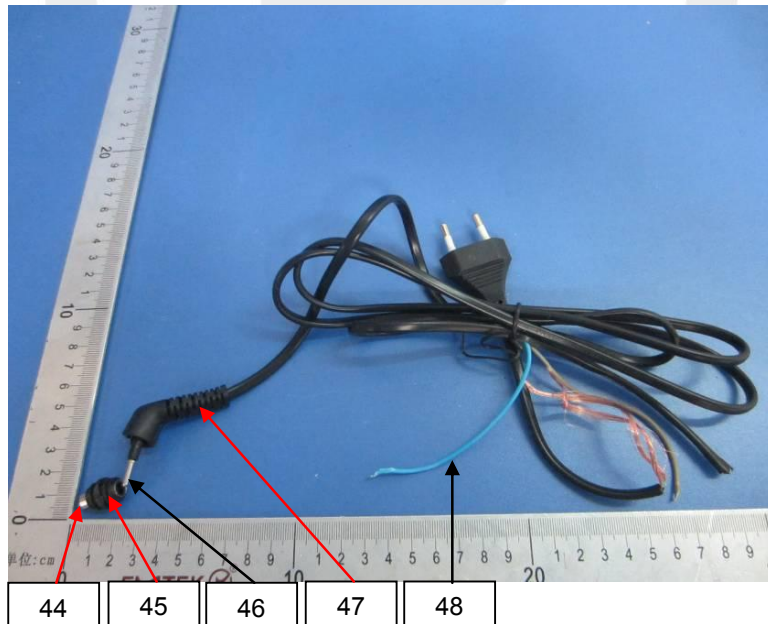
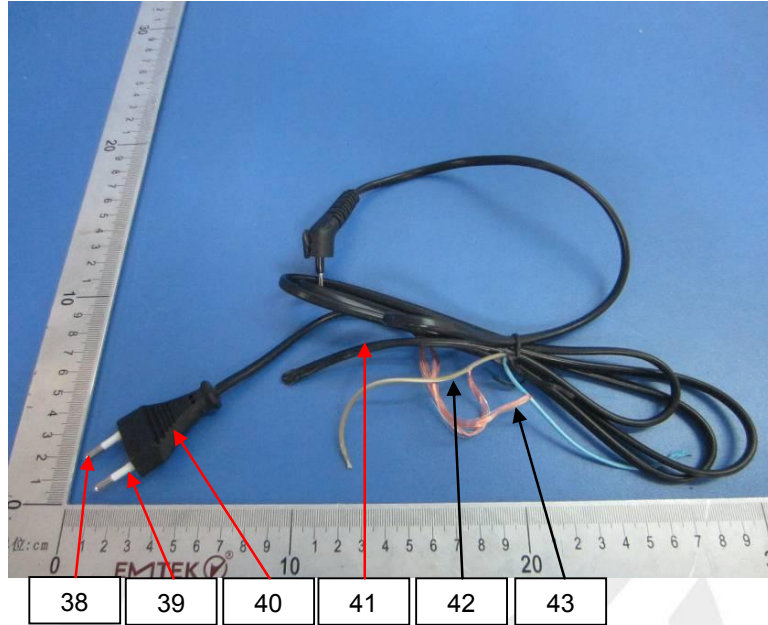


33 34 35 36



37

No. ES150122017CE004



This Test Report is issued by the Company subject to its General Conditions of Service printed overleaf or available on request and accessible at <http://www.emtek.com.cn>. Attention is drawn to the limitations of liability, indemnification and jurisdictional policies defined therein. The results shown in this test report refer only to the sample(s) tested unless otherwise stated and the sample(s) are retained for 30 days only. This Test Report cannot be reproduced, except in full, without prior written permission of the Company.

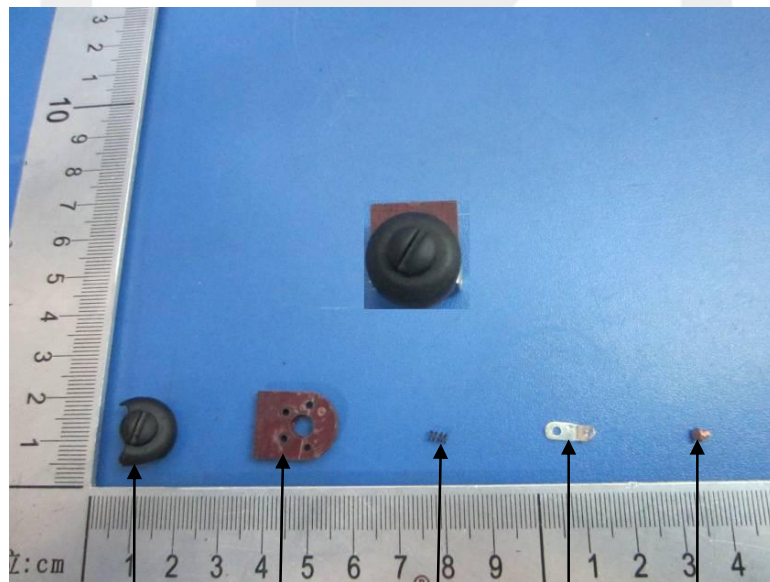
No. ES150122017CE004



49

50

51



52

53

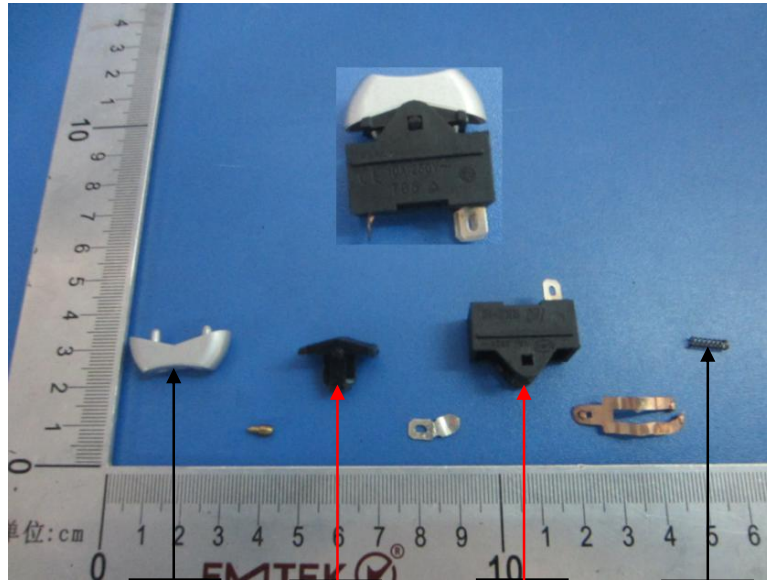
54

55

56

This Test Report is issued by the Company subject to its General Conditions of Service printed overleaf or available on request and accessible at <http://www.emtek.com.cn>. Attention is drawn to the limitations of liability, indemnification and jurisdictional policies defined therein. The results shown in this test report refer only to the sample(s) tested unless otherwise stated and the sample(s) are retained for 30 days only. This Test Report cannot be reproduced, except in full, without prior written permission of the Company.

No. ES150122017CE004



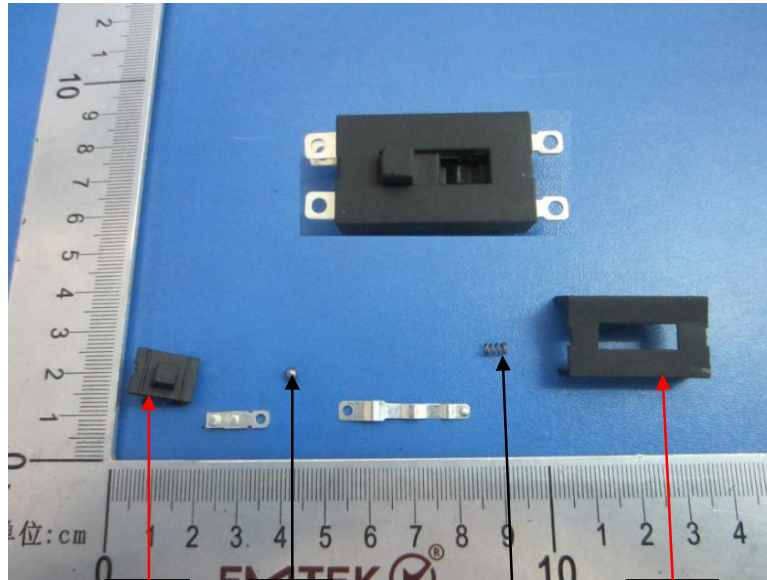
57 58 59 60



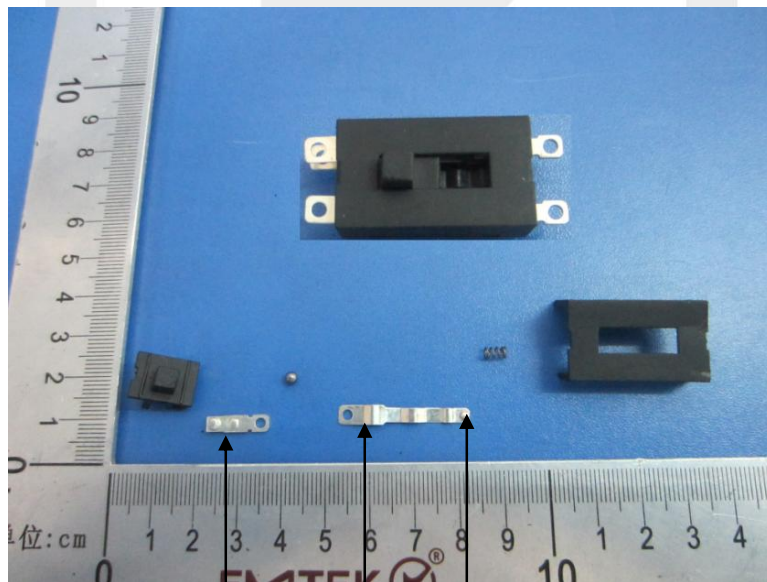
61 62 63 64

This Test Report is issued by the Company subject to its General Conditions of Service printed overleaf or available on request and accessible at <http://www.emtek.com.cn>. Attention is drawn to the limitations of liability, indemnification and jurisdictional policies defined therein. The results shown in this test report refer only to the sample(s) tested unless otherwise stated and the sample(s) are retained for 30 days only. This Test Report cannot be reproduced, except in full, without prior written permission of the Company.

No. ES150122017CE004

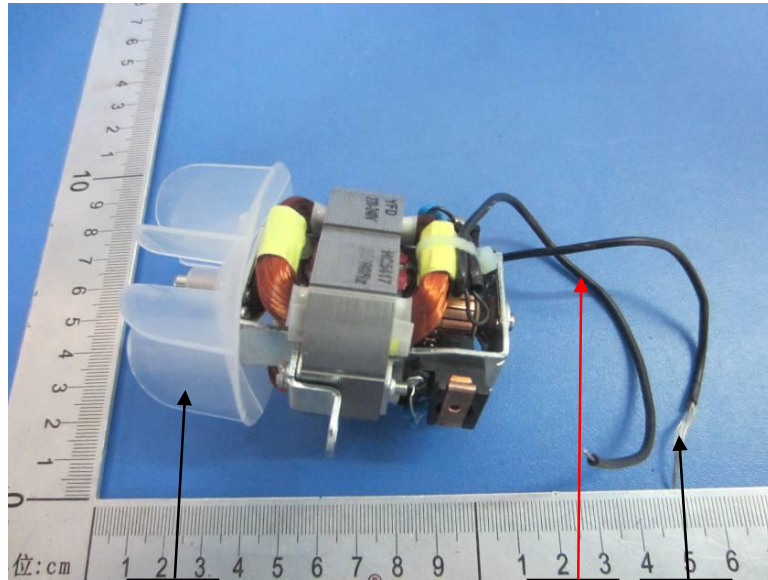


65 66 67 68



69 70 71

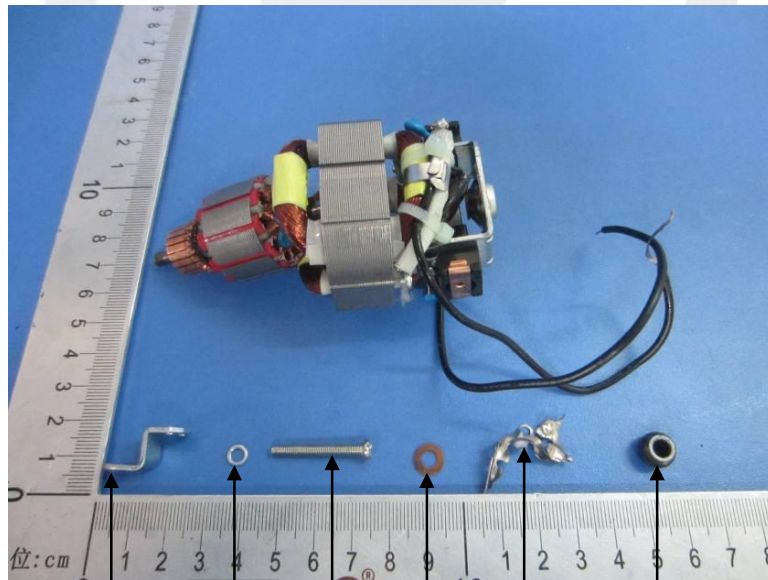
No. ES150122017CE004



72

73

74



75

76

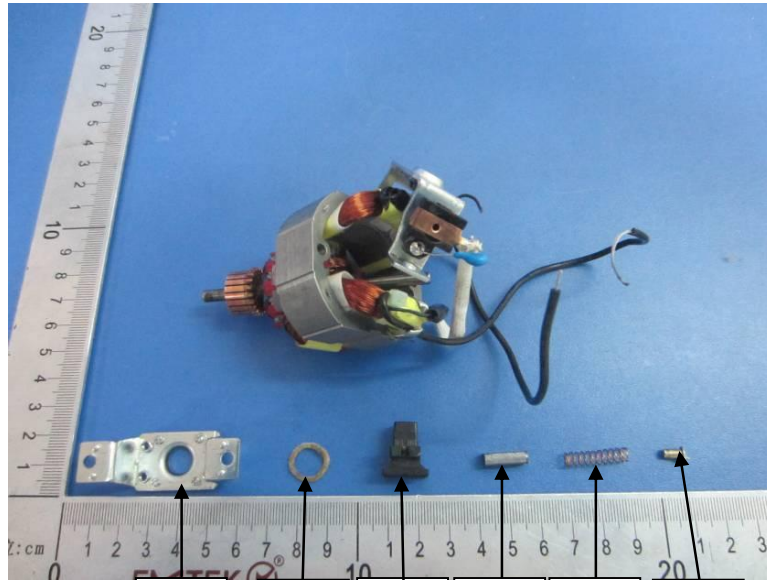
77

78

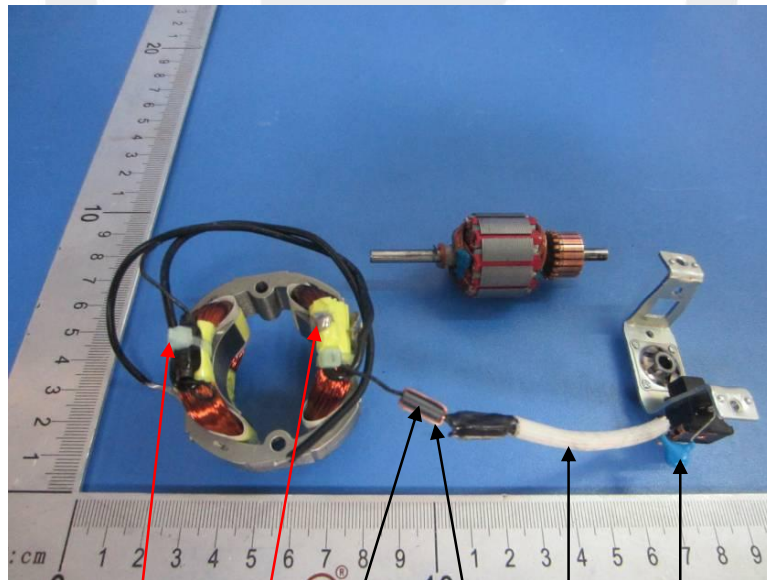
79

80

No. ES150122017CE004



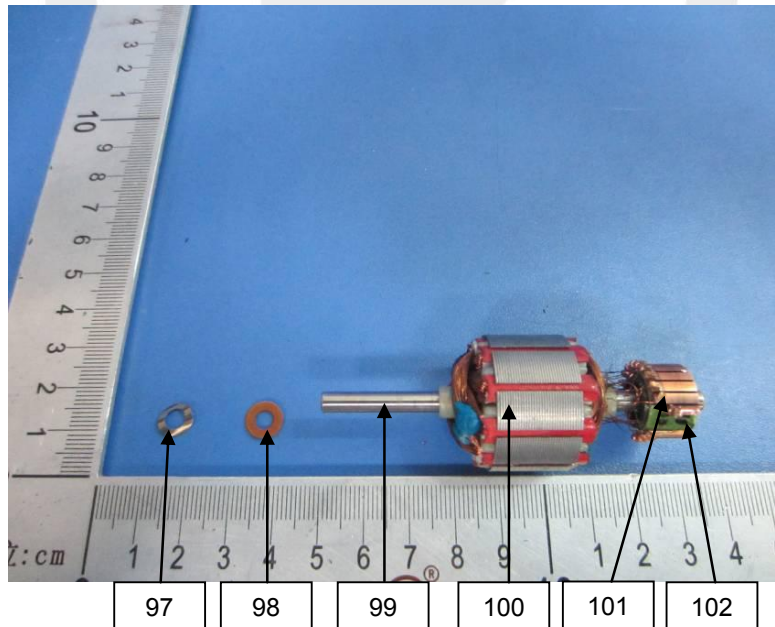
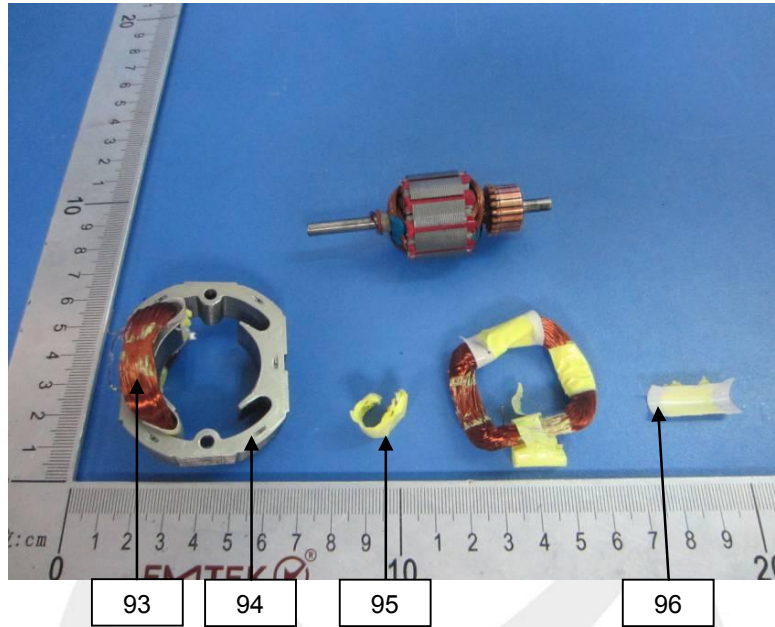
81 82 83 84 85 86



87 88 89 90 91 92

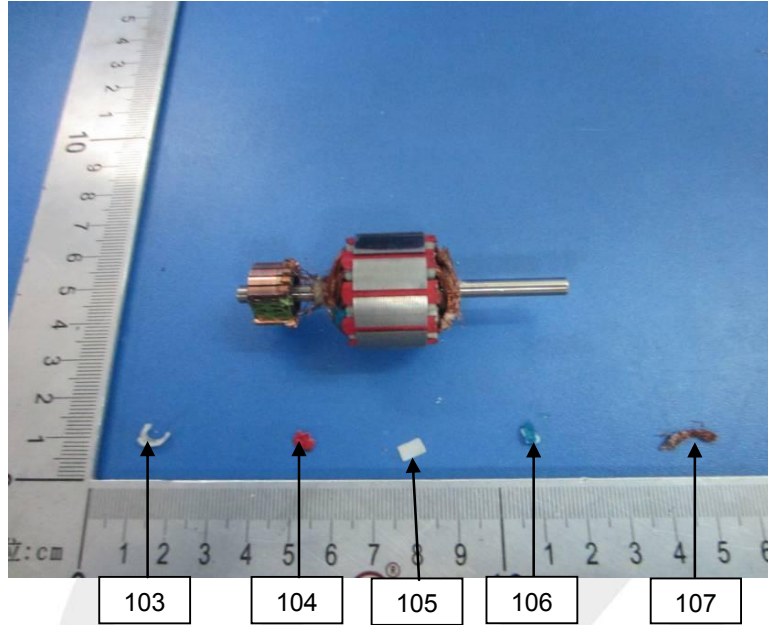
This Test Report is issued by the Company subject to its General Conditions of Service printed overleaf or available on request and accessible at <http://www.emtek.com.cn>. Attention is drawn to the limitations of liability, indemnification and jurisdictional policies defined therein. The results shown in this test report refer only to the sample(s) tested unless otherwise stated and the sample(s) are retained for 30 days only. This Test Report cannot be reproduced, except in full, without prior written permission of the Company.

No. ES150122017CE004



This Test Report is issued by the Company subject to its General Conditions of Service printed overleaf or available on request and accessible at <http://www.emtek.com.cn>. Attention is drawn to the limitations of liability, indemnification and jurisdictional policies defined therein. The results shown in this test report refer only to the sample(s) tested unless otherwise stated and the sample(s) are retained for 30 days only. This Test Report cannot be reproduced, except in full, without prior written permission of the Company.

No. ES150122017CE004



This Test Report is issued by the Company subject to its General Conditions of Service printed overleaf or available on request and accessible at <http://www.emtek.com.cn>. Attention is drawn to the limitations of liability, indemnification and jurisdictional policies defined therein. The results shown in this test report refer only to the sample(s) tested unless otherwise stated and the sample(s) are retained for 30 days only. This Test Report cannot be reproduced, except in full, without prior written permission of the Company.

No. ES150122017CE004



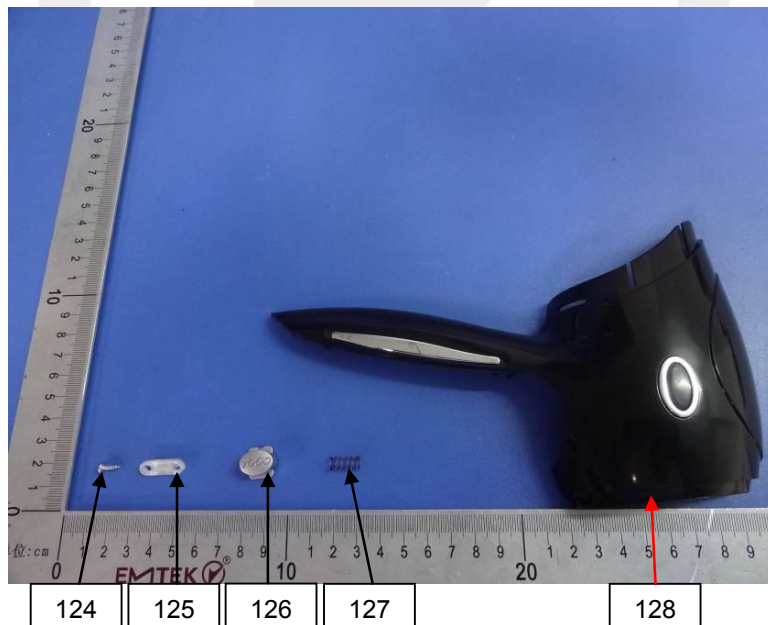
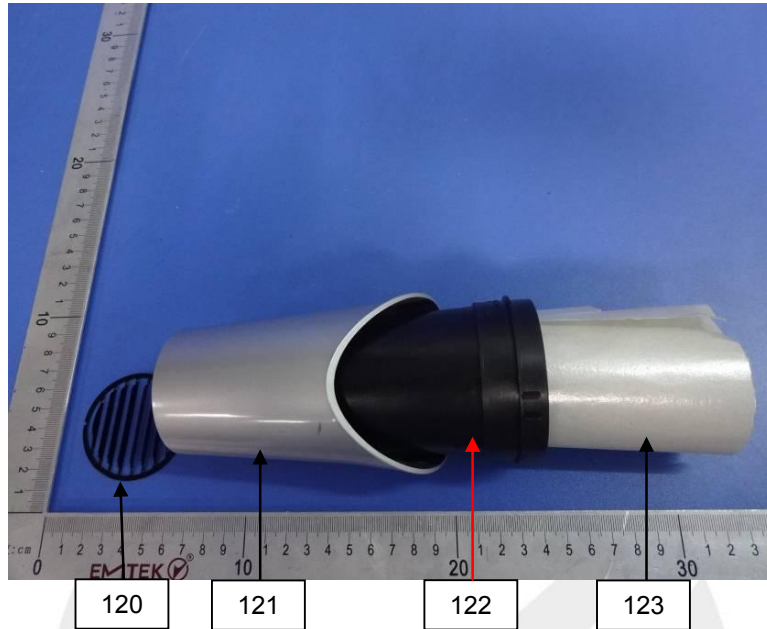
113 114 115 116



117 118 119

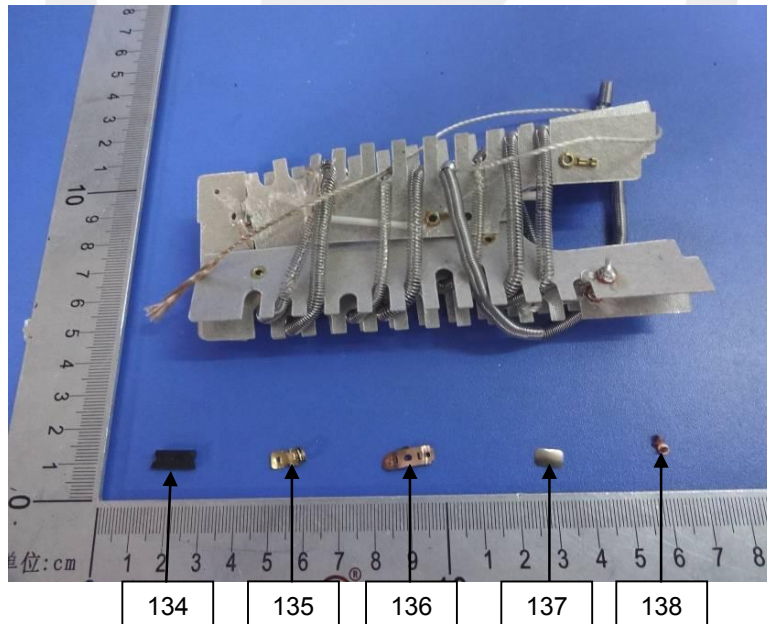
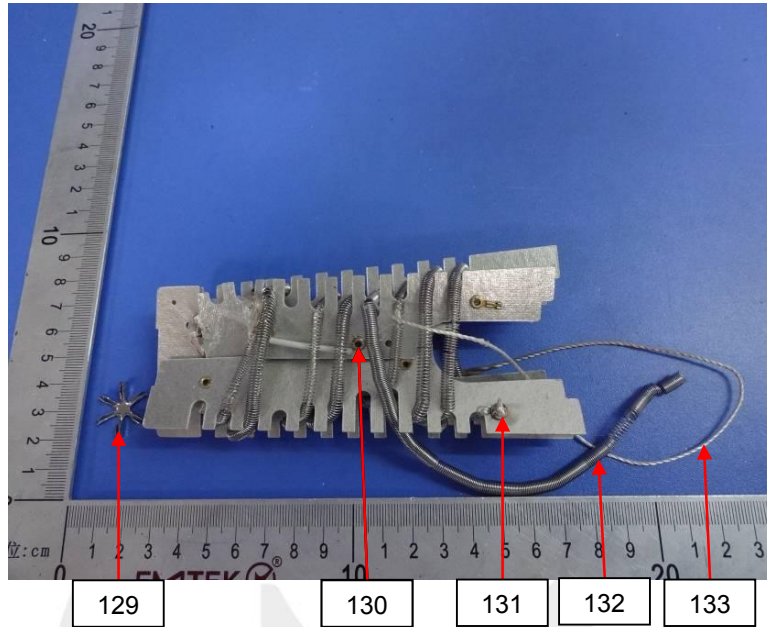
This Test Report is issued by the Company subject to its General Conditions of Service printed overleaf or available on request and accessible at <http://www.emtek.com.cn>. Attention is drawn to the limitations of liability, indemnification and jurisdictional policies defined therein. The results shown in this test report refer only to the sample(s) tested unless otherwise stated and the sample(s) are retained for 30 days only. This Test Report cannot be reproduced, except in full, without prior written permission of the Company.

No. ES150122017CE004



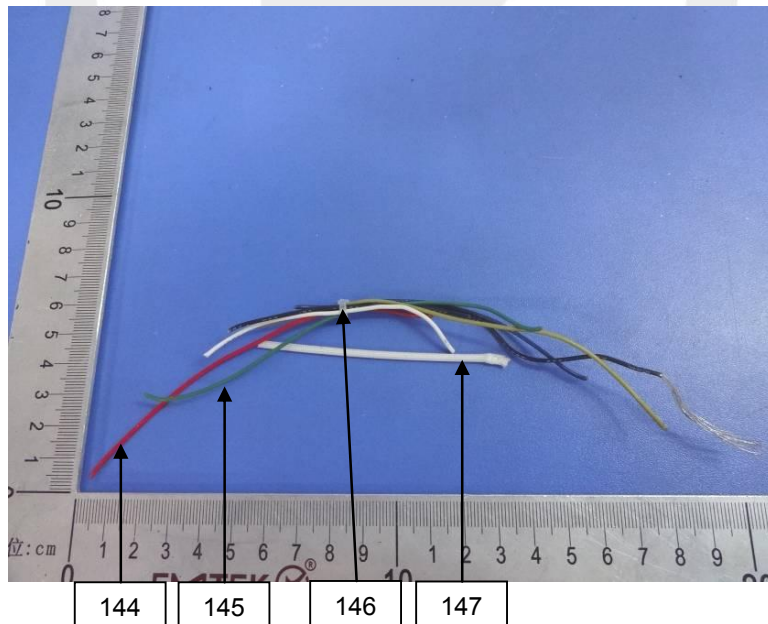
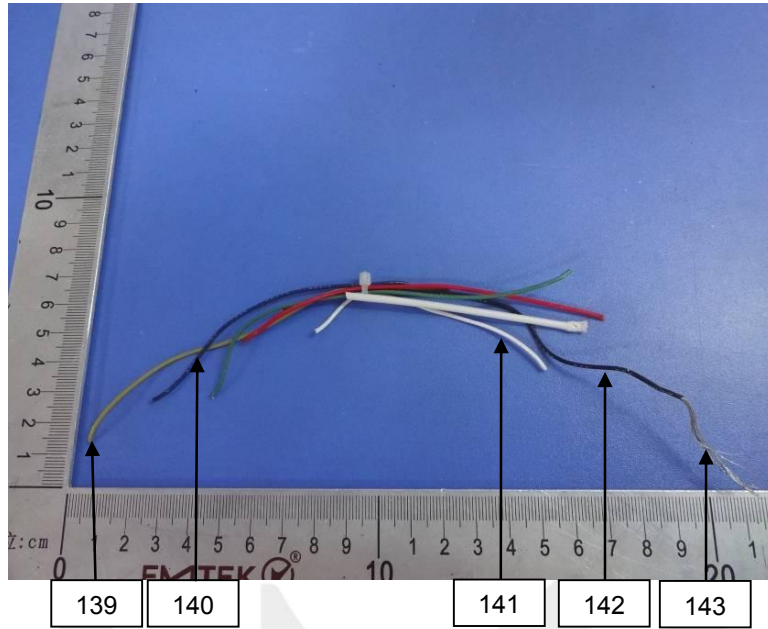
This Test Report is issued by the Company subject to its General Conditions of Service printed overleaf or available on request and accessible at <http://www.emtek.com.cn>. Attention is drawn to the limitations of liability, indemnification and jurisdictional policies defined therein. The results shown in this test report refer only to the sample(s) tested unless otherwise stated and the sample(s) are retained for 30 days only. This Test Report cannot be reproduced, except in full, without prior written permission of the Company.

No. ES150122017CE004



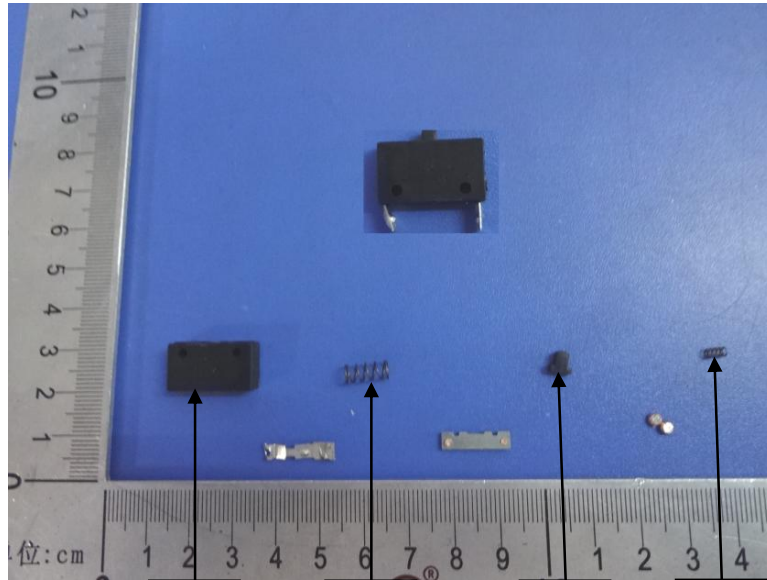
This Test Report is issued by the Company subject to its General Conditions of Service printed overleaf or available on request and accessible at <http://www.emtek.com.cn>. Attention is drawn to the limitations of liability, indemnification and jurisdictional policies defined therein. The results shown in this test report refer only to the sample(s) tested unless otherwise stated and the sample(s) are retained for 30 days only. This Test Report cannot be reproduced, except in full, without prior written permission of the Company.

No. ES150122017CE004



This Test Report is issued by the Company subject to its General Conditions of Service printed overleaf or available on request and accessible at <http://www.emtek.com.cn>. Attention is drawn to the limitations of liability, indemnification and jurisdictional policies defined therein. The results shown in this test report refer only to the sample(s) tested unless otherwise stated and the sample(s) are retained for 30 days only. This Test Report cannot be reproduced, except in full, without prior written permission of the Company.

No. ES150122017CE004

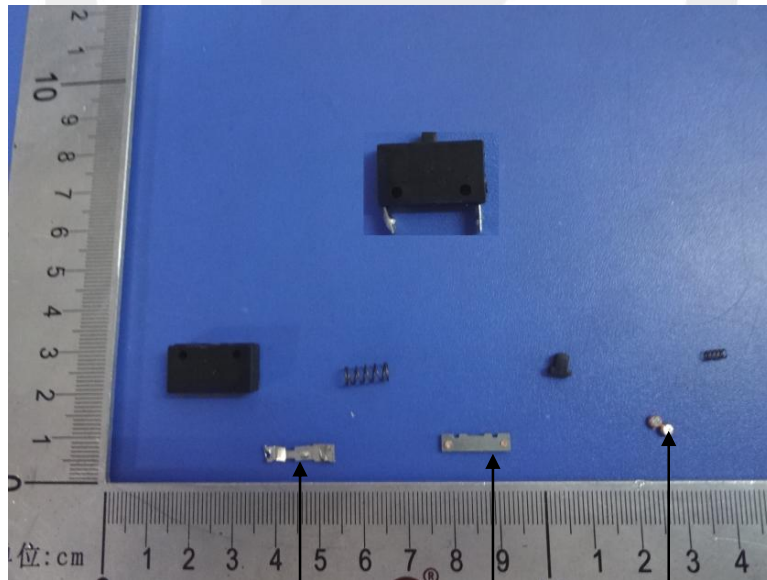


148

149

150

151

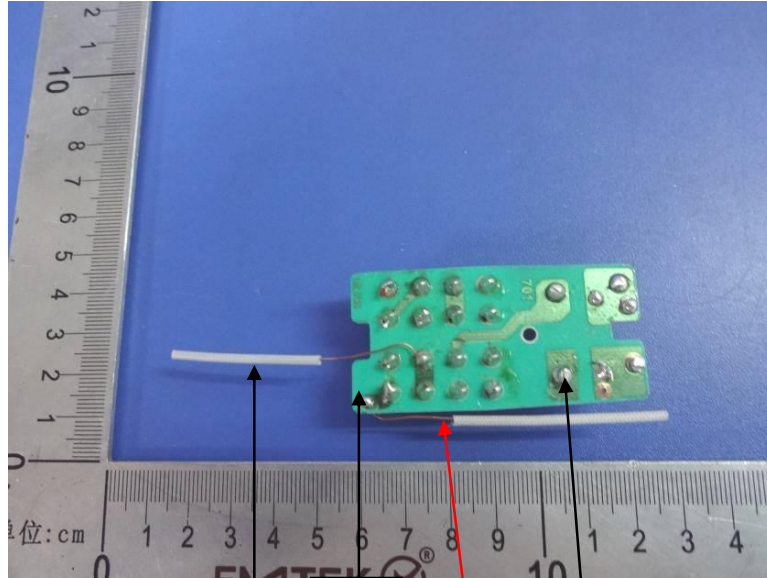


152

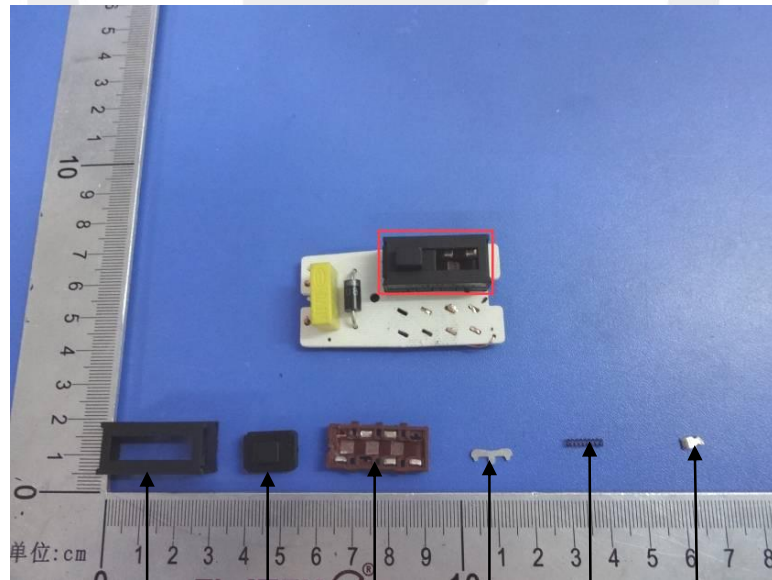
153

154

No. ES150122017CE004

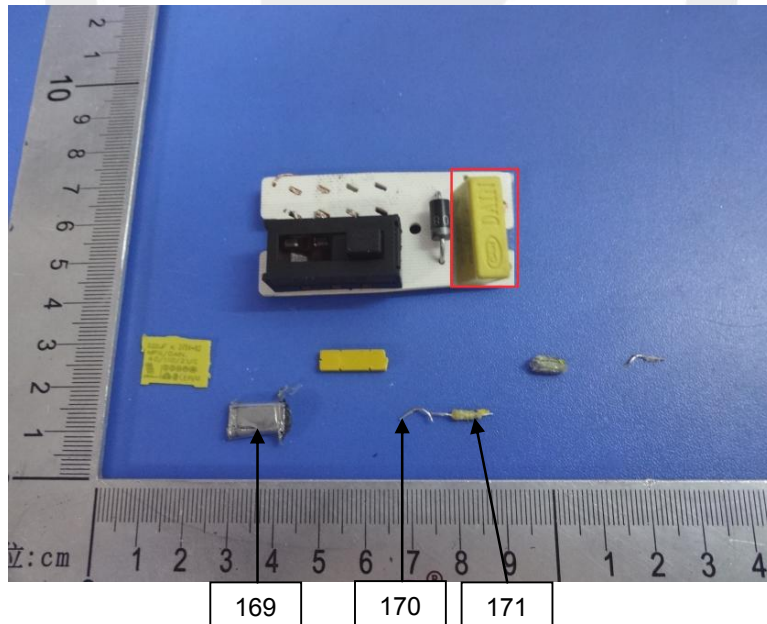
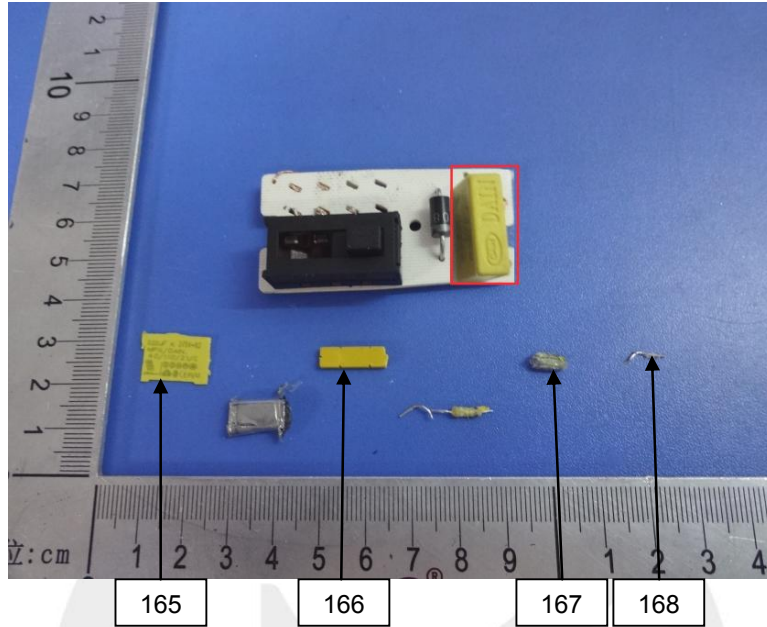


155 156 157 158

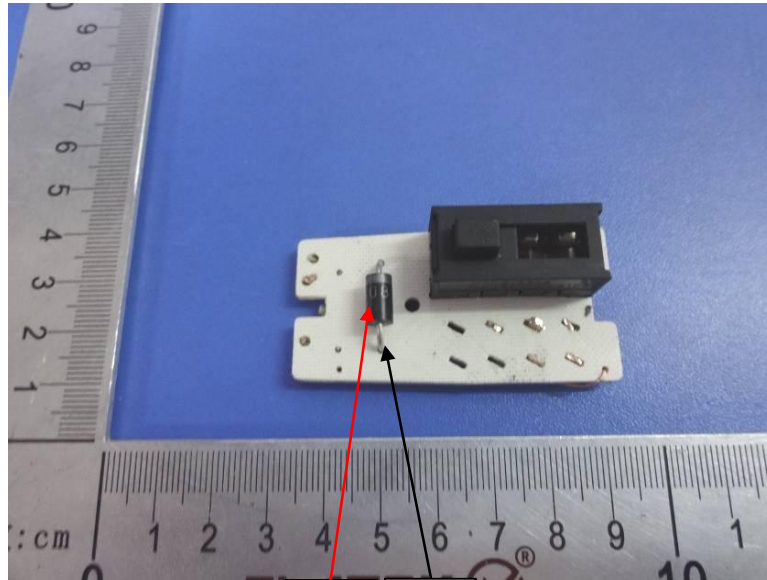


159 160 161 162 163 164

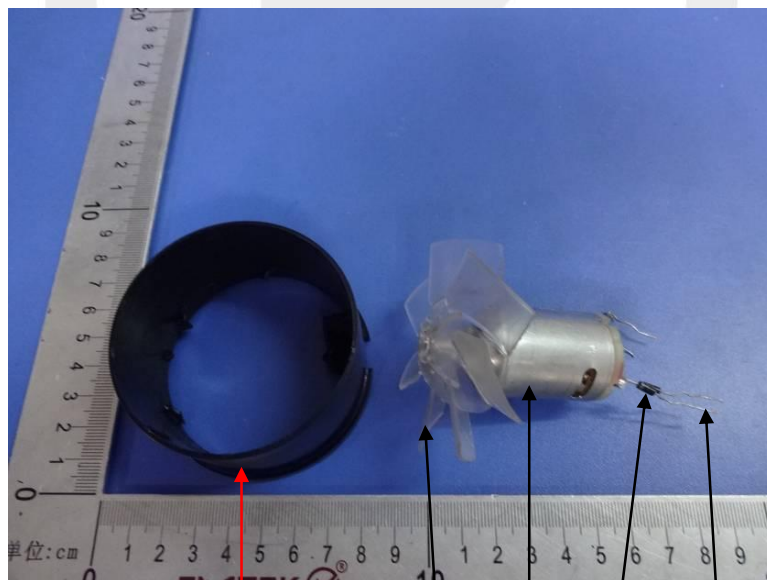
No. ES150122017CE004



No. ES150122017CE004

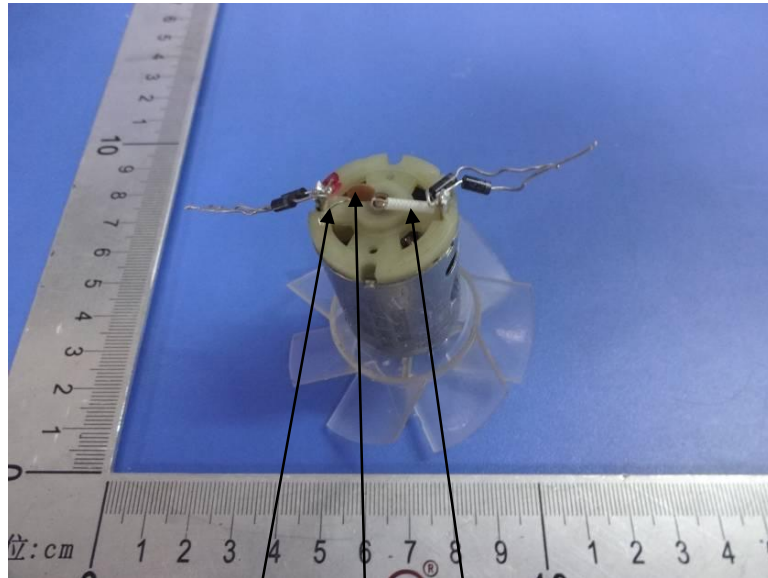


172 173

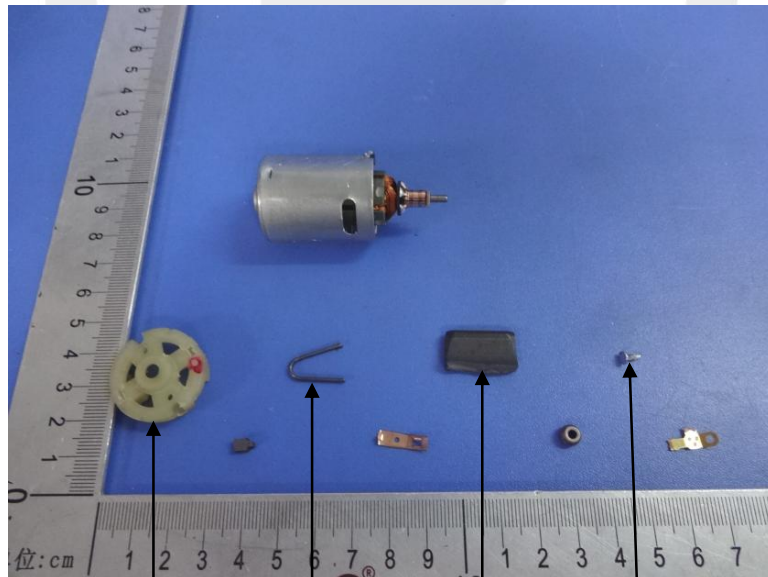


174 175 176 177 178

No. ES150122017CE004



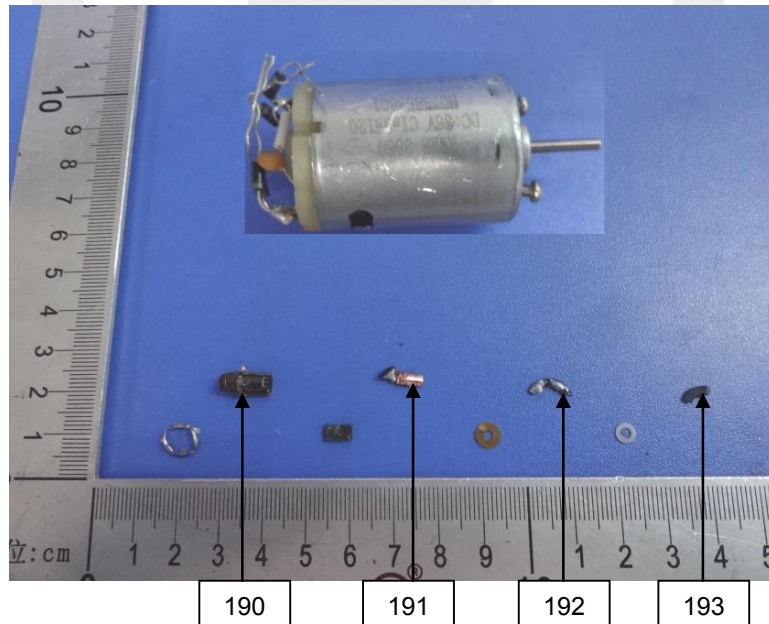
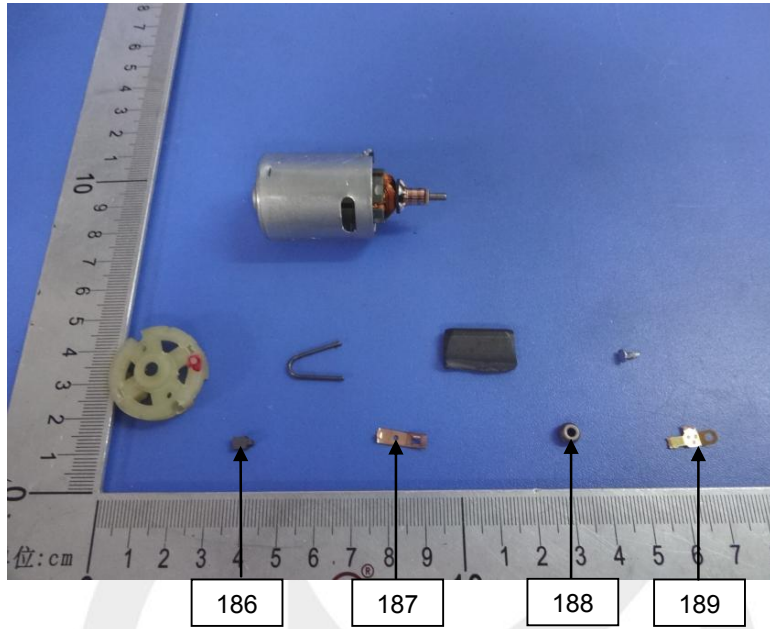
179 180 181



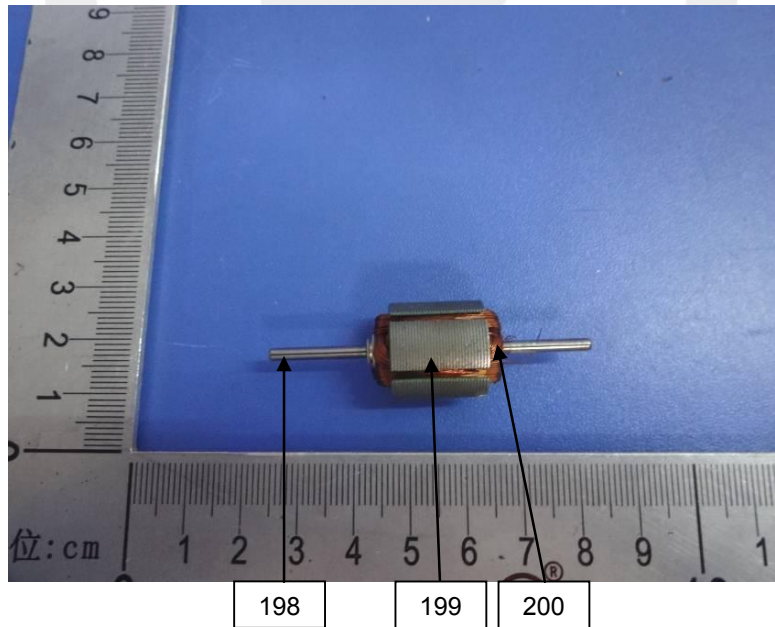
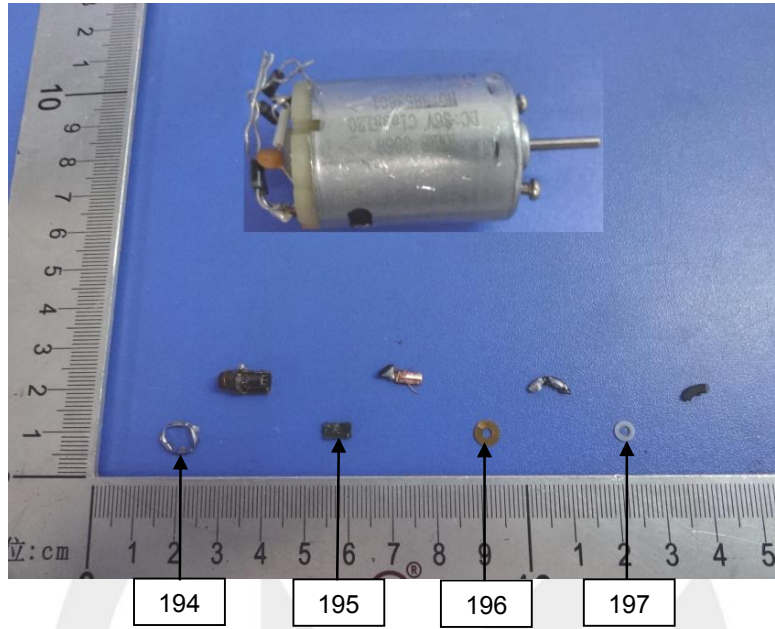
182 183 184 185

This Test Report is issued by the Company subject to its General Conditions of Service printed overleaf or available on request and accessible at <http://www.emtek.com.cn>. Attention is drawn to the limitations of liability, indemnification and jurisdictional policies defined therein. The results shown in this test report refer only to the sample(s) tested unless otherwise stated and the sample(s) are retained for 30 days only. This Test Report cannot be reproduced, except in full, without prior written permission of the Company.

No. ES150122017CE004



No. ES150122017CE004



* * * * * **The End** * * * * *

No. ES150122017CE004

ANNEX

EXEMPTION LIST

- 1 Mercury in single capped (compact) fluorescent lamps not exceeding (per burner):
 - 1(a) For general lighting purposes < 30W: 5mg (expires on 31 December 2011; 3.5mg may be used per burner after 31 December 2011 until 31 December 2012; 2.5mg shall be used per burner after 31 December 2012)
 - 1(b) For general lighting purposes \geq 30W and <50W: 5mg (expires on 31 December 2011; 3.5mg may be used per burner after 31 December 2011)
 - 1(c) For general lighting purposes \geq 50W and <150W: 5mg
 - 1(d) For general lighting purposes \geq 150W: 15mg
 - 1(e) For general lighting purposes with circular or square structural shape and tube diameter \leq 17mm (no limitation of use until 31 December 2011; 7mg may be used per burner after 31 December 2011)
 - 1(f) For special purposes: 5mg
- 2(a) Mercury in double-capped linear fluorescent lamps for general lighting purposes not exceeding (per lamp):
 - 2(a)(1) Tri-band phosphor with normal lifetime and a tube diameter < 9mm (e.g. T2): 5mg (expires on 31 December 2011; 4mg may be used per lamp after 31 December 2011)
 - 2(a)(2) Tri-band phosphor with normal lifetime and a tube diameter \geq 9mm and \leq 17mm (e.g. T5): 5mg (expires on 31 December 2011; 3mg may be used per lamp after 31 December 2011)
 - 2(a)(3) Tri-band phosphor with normal lifetime and a tube diameter > 17mm and \leq 28mm (e.g. T8): 5mg (expires on 31 December 2011; 3.5mg may be used per lamp after 31 December 2011)
 - 2(a)(4) Tri-band phosphor with normal lifetime and a tube diameter > 28mm (e.g. T12): 5mg (expires on 31 December 2012; 3.5mg may be used per lamp after 31 December 2012)
 - 2(a)(5) Tri-band phosphor with long lifetime (\geq 25000h): 8mg (expires on 31 December 2011; 5mg may be used per lamp after 31 December 2011)
- 2(b) Mercury in other fluorescent lamps not exceeding (per lamp):
 - 2(b)(1) Linear halophosphate lamps with tube > 28mm (e.g. T10 and T12): 10mg (expires on 13 April 2012)
 - 2(b)(2) Non-linear halophosphate lamps (all diameters): 15mg (expires on 13 April 2016)
 - 2(b)(3) Non-linear tri-band phosphor lamps with tube diameter > 17mm (e.g. T9) (no limitation of use until 31 December 2011; 15mg may be used per lamp after 31 December 2011)
- 2(b)(4) Lamps for other general lighting and special purposes (e.g. induction lamps) (no limitation of use until 31 December 2011; 15mg may be used per lamp after 31 December 2011)
- 3 Mercury in cold cathode fluorescent lamps and external electrode fluorescent lamps (CCFL and EEFL) for special purposes not exceeding (per lamp):
 - 3(a) Short length (\leq 500mm) (No limitation of use until 31 December 2011; 3.5mg may be used per lamp after 31 December 2011)
 - 3(b) Medium length (> 500mm and \leq 1500mm) (No limitation of use until 31 December 2011; 5mg may be used per lamp after 31 December 2011)
 - 3(c) Long length (> 1500mm) (No limitation of use until 31 December 2011; 13mg may be used per lamp after 31 December 2011)
- 4(a) Mercury in other low pressure discharge lamps (per lamp) (no limitation of use until 31 December 2011; 15mg may be used per lamp after 31 December 2011)
- 4(b) Mercury in High Pressure Sodium (vapour) lamps for general lighting purposes not exceeding (per burner) in lamps with improved colour rendering index Ra > 60:
 - 4(b)-I $P \leq 155W$ (no limitation of use until 31 December 2011; 40mg may be used per burner after 31 December 2011)
 - 4(b)-II $155W < P \leq 405W$ (no limitation of use until 31 December 2011; 40mg may be used per burner after 31 December 2011)
 - 4(b)-III $P > 405W$ (no limitation of use until 31 December 2011; 40mg may be used per burner after 31 December 2011)
- 4(c) Mercury in other High Pressure Sodium (vapour) lamps for general lighting purposes not exceeding (per burner):
 - 4(c)-I $P \leq 155W$ (no limitation of use until 31 December 2011; 25mg may be used per burner after 31 December 2011)
 - 4(c)-II $155W < P \leq 405W$ (no limitation of use until 31 December 2011; 30mg may be used per burner after 31 December 2011)
 - 4(c)-III $P > 405W$ (no limitation of use until 31 December 2011; 40mg may be used per burner after 31 December 2011)
- 4(d) Mercury in High Pressure Mercury (vapour) lamps (HPMV) (expires on 13 April 2015)
- 4(e) Mercury in metal halide lamps (MH)
- 4(f) Mercury in other discharge lamps for special purposes not specifically mentioned in this Annex
- 5(a) Lead in glass of cathode ray tubes
- 5(b) Lead in glass of fluorescent tubes not exceeding 0.2% by weight
- 6(a) Lead as an alloying element in steel for machining purposes and in galvanized steel containing up to 0.35% lead by weight
- 6(b) Lead as an alloying element in aluminium containing up to 0.4% lead by weight
- 6(c) Copper alloy containing up to 4% lead by weight.
- 7(a) Lead in high melting temperature type solders (i.e. lead based alloys containing 85% by weight or more lead)
- 7(b) Lead in solders for servers, storage and storage array systems, network infrastructure equipment for switching, signalling, transmission, and network management for telecommunications
- 7(c)-I Electrical and electronic components containing lead in a glass or ceramic other than dielectric ceramic in capacitors, e.g. piezoelectronic devices, or in a glass or ceramic matrix compound
- 7(c)-II Lead in dielectric ceramic in capacitors for a rated voltage of 125V AC or 250V DC or higher

This Test Report is issued by the Company subject to its General Conditions of Service printed overleaf or available on request and accessible at <http://www.emtek.com.cn>. Attention is drawn to the limitations of liability, indemnification and jurisdictional policies defined therein. The results shown in this test report refer only to the sample(s) tested unless otherwise stated and the sample(s) are retained for 30 days only. This Test Report cannot be reproduced, except in full, without prior written permission of the Company.

No. ES150122017CE004

ANNEX

EXEMPTION LIST

Continued

- 7(c)-III Lead in dielectric ceramic in capacitors for a rated voltage of less than 125V AC or 250V DC (expires on 1 January 2013 and after that date may be used in spare parts for EEE placed on the market before 1 January 2013).
- 7(c)-IV Lead in PZT based dielectric ceramic materials for capacitors being part of integrated circuits or discrete semiconductors
- 8(a) Cadmium and its compounds in one shot pellet type thermal cut-offs (expires on 1 January 2012 and after that date may be used in spare parts for EEE placed on the market before 1 January 2012)
- 8(b) Cadmium and its compounds in electrical contacts
- 9 Hexavalent chromium as an anti-corrosion agent of the carbon steel cooling system in absorption refrigerators up to 0.75% by weight in the cooling solution
- 9(b) Lead in bearing shells and bushes for refrigerant-containing compressors for heating, ventilation, air conditioning and refrigeration (HVACR) applications
- 11(b) Lead used in other than C-press compliant pin connector systems (expires on 1 January 2013 and after that date may be used in spare parts for EEE placed on the market before 1 January 2013)
- 13(a) Lead in white glasses used for optical applications
- 13(b) Cadmium and lead in filter glasses and glasses used for reflectance standards
- 14 Lead in solders consisting of more than two elements for the connection between the pins and the package of microprocessors with a lead content of more than 80% and less than 85% by weight (expires on 1 January 2011 and after that date may be used in spare parts for EEE placed on the market before 1 January 2011)
- 15 Lead in solders to complete a viable electrical connection between semiconductor die and carrier within integrated circuit Flip Chip packages
- 16 Lead in linear incandescent lamps with silicate coated tubes (expires on 1 September 2013)
- 17 Lead halide as radiant agent in High Intensity Discharge (HID) lamps used for professional reprography applications
- 18(a) Lead as activator in the fluorescent powder (1% lead by weight or less) of discharge lamps when used as speciality lamps for diazo-printing reprography, lithography, insect traps, photochemical and curing processes containing phosphors such as SMS ((Sr,Ba)₂MgSi₂O₇:Pb) (expires on 1 January 2011)
- 18(b) Lead as activator in the fluorescent powder (1% lead by weight or less) of discharge lamps when used as sun tanning lamps containing phosphors such as BSP (BaSi₂O₅:Pb)
- 19 Lead with PbBiSn-Hg and PbInSn-Hg in specific compositions as main amalgam and with PbSn-Hg as auxiliary amalgam in very compact Energy Saving Lams (ESL) (expire on 1 June 2011)
- 20 Lead oxide in glass used for bonding front and rear substrates of flat fluorescent lamps used for Liquid Crystal Displays (LCDs) (expires on 1 June 2011)
- 21 Lead and cadmium in printing inks for the application of enamels on glasses, such as borosilicate and soda lime glass
- 24 Lead in solders for the soldering to machined through hole discoidal and planar array ceramic multilayer capacitors
- 25 Lead oxide in surface conduction electron emitter displays (SED) used in structural elements, notably in the seal frit and frit ring
- 26 Lead oxide in the glass envelope of Black Light Blue (BLB) lamps (expires on 1 June 2011)
- 29 Lead bound in crystal glass as defined in Annex 1 (Categories 1, 2, 3 and 4) of Council Directive 69/493/EEC
- 30 Cadmium alloys as electrical/mechanical solder joints to electrical conductors located directly on the voice coil in transducers used in high-powered loudspeakers with sound pressure levels of 100 dB (A) and more
- 31 Lead in soldering materials in mercury free flat fluorescent lamps (which e.g. are used for liquid crystal displays, design or industrial lighting)
- 32 Lead oxide in seal frit used for making window assemblies for Argon and Krypton laser tubes
- 33 Lead in solders for the soldering of thin copper wires of 100 µm diameter and less in power transformers
- 34 Lead in cermet-based trimmer potentiometer elements
- 37 Lead in the plating layer of high voltage diodes on the basis of a zinc borate glass body
- 38 Cadmium and cadmium oxide in thick film pastes used on aluminium bonded beryllium oxide
- 39 Cadmium in colour converting II-VI LEDs (< 10 µg Cd per mm² of light- emitting area) for use in solid state illumination or display systems (expires on 1 July 2014)
- 40 Cadmium in photoresistors for analogue optocouplers applied in professional audio equipment.

This Test Report is issued by the Company subject to its General Conditions of Service printed overleaf or available on request and accessible at <http://www.emtek.com.cn>. Attention is drawn to the limitations of liability, indemnification and jurisdictional policies defined therein. The results shown in this test report refer only to the sample(s) tested unless otherwise stated and the sample(s) are retained for 30 days only. This Test Report cannot be reproduced, except in full, without prior written permission of the Company.