

SEWING MACHINE

Instruction manual



TMAC-1091



TMAC-1096



Dear consumer, Please read these instructions carefully before use in order to avoid damage due to incorrect use and to better understand the functions of this product. Please pay particular attention to the safety guide.

If you pass the device on to a third party, these Operating Instructions must also be handed over.

Please keep them for future references.

IMPORTANT SAFEGUARDS

- Please read these instructions carefully before use.
- Keep present instructions for future references.
- Check that your mains voltage corresponds to that stated on the appliance.
- Only use the appliance for domestic purposes and household or similar applications such as:
 - staff kitchen areas, in shops, offices and other working environments;
 - By clients in hotels, motels and other residential type environments;
 - Environment type like : • Farm Houses • Bed and Breakfast.
- Only use the appliance in the way indicated in these instructions.
- Never use this unit near bathtub, shower, wash-hand basins or other containers with water.
- Never use this apparatus near water projections.
- Never use this apparatus with the wet hands.
- If, unfortunately the apparatus is wet, immediately withdraw the cord of the socket-outlet.
- Inform potential users of these instructions.
- Never leave the appliance unsupervised when in use.
- The appliance must be used only for its intended purpose. No responsibility can be taken for any possible damage caused by incorrect use or improper handling.
- Children and persons with disabilities are not always aware of the danger posed by the use of appliances.
- This device can be used by children aged 8 years and older and adults, with reduced physical, sensory or mental capabilities or lack of experience and knowledge, if they have been given supervision or instruction concerning use of the appliance in a safe way and understand the hazards involved.

- This device is not a toy, do not leave children or people with disabilities to play with.
- Cleaning and maintenance must not be made by children without supervision.
- Keep the appliance and its cord out of reach of children aged less than 8 years.
- In order to ensure your children's safety, please keep all packaging (plastic bags, boxes, polystyrene etc.) out of their reach.
- Caution ! Do not allow small children to play with the foil :
THERE IS A DANGER OF SUFFOCATION !
- From time to time check the cord for damages. Never use the appliance if cord or appliance shows any signs of damage.
- Never immerse the appliance in water or any other liquid for any reason whatsoever.
- Never place it into the dishwasher.
- Never use the appliance near hot surfaces.
- Do not operate the appliance with a damaged cord or plug, or after the appliance has been damaged in any manner.
- Disconnect the power source cable before any operation of cleaning of maintenance and accessories assembly.
- Never use the appliance outside and always place it in a dry environment.
- Switch off or unplug the appliance when leaving it unattended.
- Unplug the appliance before carrying out maintenance or replacing lamps.
- Never use accessories, which are not recommended by the producer. They could constitute a danger to the user and risk to damage the appliance.
- The appliance is only to be used with the power supply unit provided with the appliance.

- Never move the appliance by pulling the cord. Make sure the cord cannot get caught in any way.
- Never wind the cord around the appliance and do not bend it
- Ensure that the power cord does not come into contact with hot parts of this unit.
- Make sure the appliance has cooled down before cleaning and storing it.
- The temperature of accessible surfaces may be very high when the appliance is operating. Never touch these parts, of apparatus, to avoid burning itself.
- Make sure the appliance never comes into contact with flammable materials, such as curtains, cloth, etc...& the power cord and plug do not come in contact with water.
- Before cleaning, always unplug the appliance from the power supply and let it cool down.
- This appliance is not intended to be operated by means of an external timer or separate remote-control system.
- Always place the unit on a flat surface. Ensure, also, not to cover the device and not to put anything on it.
- Always remove the plug from the wall socket when the appliance is not in use.
- When using an extension lead always make sure that the entire cable is unwound from the reel. Use solely CE approved extension leads. Input power must be at least 16A, 250V, 3000W.
- Incorrect operation and improper use can damage the appliance and cause injury to the user.
- This device, designed for home use, complies with standards relating to this type of product.
- The appliance must be used and rested on a table or flat & stable surface.

- The item must not be left unattended when it is connected to main supply.
- The item is not to be used, if it has been dropped or if there are visible signs of damage or if it is leaking.
- This appliance is only intended for household use.

(*) **Competent qualified person** : after sales department of the producer or importer or any person who is qualified, approved and competent to perform this kind of repairs.

GENERAL INFORMATION

The symbol "OPEN BOOK" means a recommendation to read important things contained in the record.



The symbol "BIN" crossed out, abbreviation WEEE (Waste of Electrical and Electronic Equipment) means that at the end of life, it should not be discarded with household waste, but filed to the sorting of the locality. Waste recovery can help preserve our environment.



The symbol "CE" is the guarantee of compliance with harmonized European standards, voluntary, reflecting the essential requirements into technical specifications. These standards are not mandatory but are guarantees of compliance with essential requirements.

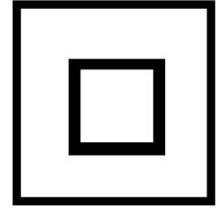


The symbol ROHS (Restriction of use of some Hazardous Substances) on the Environmental Protection, certifies that for each of the five hazardous substances • Lead • Mercury • (hexavalent) chromium • products for protection against flames PBB and



PBDE, the peak concentration is equal to or less than 0.1% of the weight of homogeneous material, and 0.01% for the 6th • cadmium.

The symbol "DOUBLE SQUARE" means a double insulated. A basic insulation and supplementary insulation. This device requires no connection to the mass of a protective conductor grounded. The materials are said : double insulation class II.



The symbol "TRIMAN" indicates that the consumer is invited to dispose the product as part of a separate collection (eg recycling bin, waste, voluntary intake point).



For more information : <http://www.quefairedemesdechets.fr>

FIRST USE

Before first use, remove the device and all accessories and being careful with sharp accessories.

- Clean the apparatus according to the instructions in "Cleaning and maintenance" paragraph.
- Place the machine on a suitable flat, stable surface.

USE

- Unroll the power cord completely.
- Check that the tension corresponds to that indicated on the apparatus.
- Connect the apparatus in a correct socket-outlet, (and connected to the ground if the unit is Class I), to avoid any danger.
- Disconnect the power source cable before any operation of cleaning of maintenance and accessories assembly.
- Never modify the appliance in anyway.

Component introduction

1 -Reverse button



- 2 -Function adjustment wheel
- 3 -Function indication panel
- 4 -Take up lever
- 5 -Winding slice
- 6 -Thread guide 1
- 7 -Thread guide 2
- 8 -Thread tension adjustment wheel
- 9 -Thread clamp
- 10 -Thread cutter
- 11 -Thread guiding spring 1
- 12 -Needle bar
- 13 -Thimble screw
- 14 - Thread guiding spring 1
- 15 -Presser bar
- 16 -Needle
- 17 -Presser foot
- 18 -Transparent cover
- 19 -Needle plate
- 20 -Presser bar lifter
- 21 -Winding slice
- 22 -Spool pin
- 23 -Thread stand groove
- 24 -Handwheel
- 25 -Switch On/Off
- 26 -Presser switch socket
- 27 -Power switch socket



Accessories

- 31—Foot switch (x1)
- 32—Adapter(x1)
- 33--Bobbin(x4)
- 34—Double needle(x1)
- 35—Winding Pin(x1)
- 36--Threader (x1)
- 37—#14 Needle(x3)



Attention:

1. Power adapter and foot switch shall comply with the socket.
2. Power adapter and foot switch are only allowed for application with this product. They are not allowed to use with other products.

3. It is forbidden to apply other power adapter to this product.

Preparation before operation

Power connection



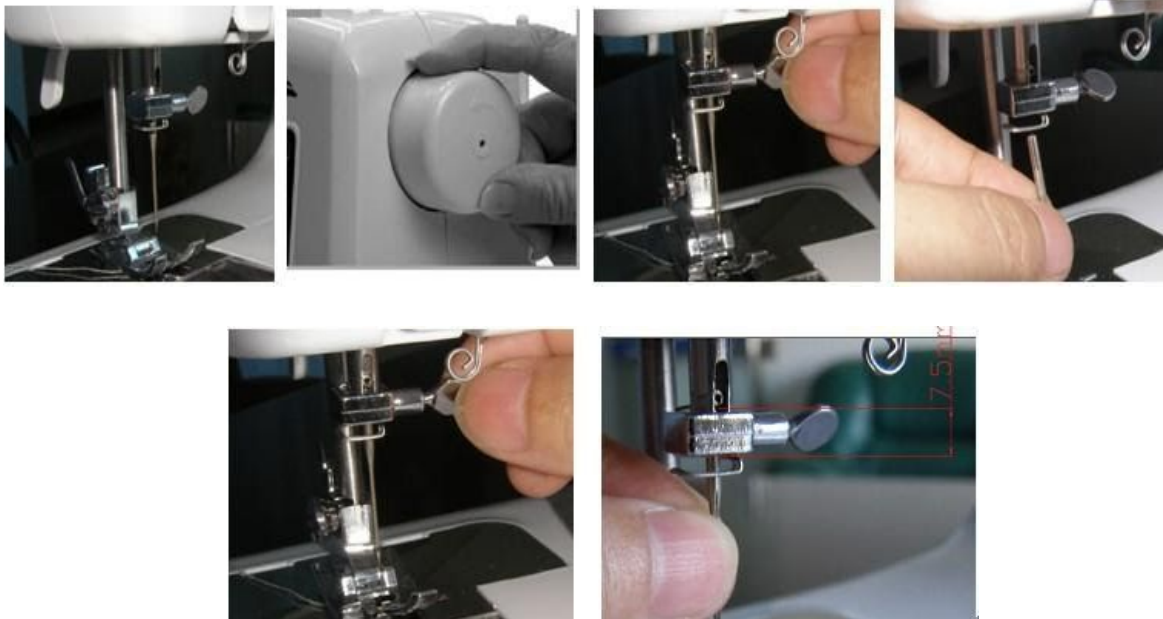
1. The power jack of the sewing machine locates in the bottom right, show in Fig. Plug the power adapter (32) into corresponding jack (27).
2. Plug the power plug of the power adapter (32) to AC socket, shown in the Fig.

Foot switch connection

1. The foot switch jack lies in the bottom right of the sewing machine, shown in the Fig. Plug the foot switch (31) into corresponding jack (26).
2. Foot switch (31) shall put on the ground for the convenience of stamp and control



Change and installation of sewing needle



Extraction and installation of sewing needle must be implemented with power off and comply with the following steps:

1. Turn "OFF" the power and rotate the hand wheel (24).
2. Lift the needle bar(12) and sewing needle (16) to the height shown in the Fig after the hand wheel (24) rotated, and then stop rotating hand wheel (24) to keep it in static.
3. Screw counter clockwise to screw off thimble screw(13).
4. Take out the sewing needle (16) to be replaced
5. Pass the sewing needle (16) through the thread guiding spring 2 (14) by right bottom-up approach and insert needle bar(12) to its bottom. Then screw clockwise to screw on thimble screw.
6. Make sure install the sewing needle in place until it can't insert into any more. Normal sewing needle (16) installation must insert 7.5mm into the end of needle bar(12) (shown in Fig), otherwise, it will cause firing-pin, thread hook, or skipped stitches.

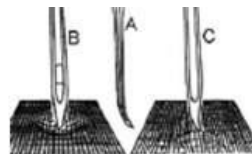
Attention : Pay attention to the following points during sewing needle installation

1. Make sure the perfect quality of the sewing needle. The sewing needles shown in the right Fig will cause problems:

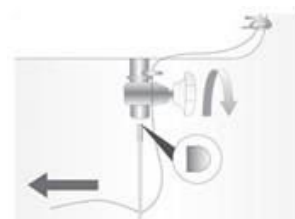
A: curved needle

B: blunt needles

C: needle with damaged pinpoint



- 2.Flat part of the sewing needing shall be installed backward, shown in the right Fig

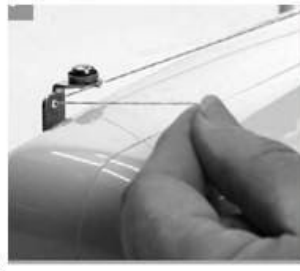


(2)

Threading



(1)



(2)



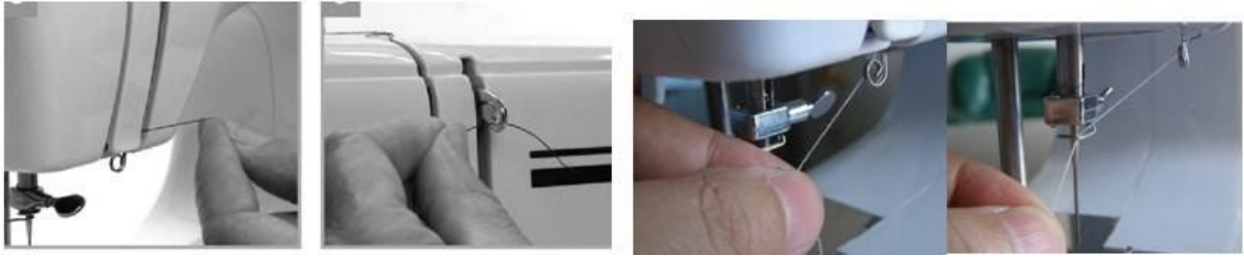
(3)



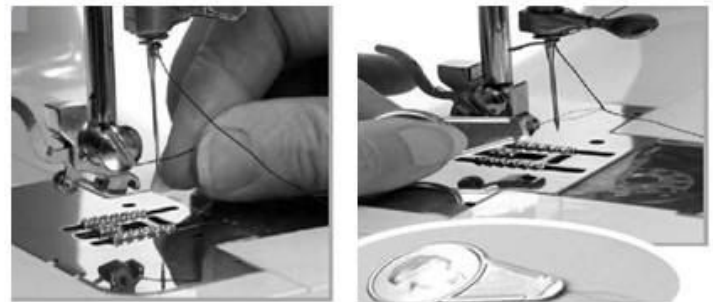
(4)

- 1.Insert the Spool Pin (22) onto the groove (23) on the back of the machine, Put the bobbin on the Spool Pin (22), shown in Fig1.
2. Pass the thread of the bobbin through the hole of winding slice (21) from back to front, shown in Fig2.

3. Pull the thread to thread guide 1(6), shown in Fig 3
4. Put the thread into thread clamp (9) after passing through the thread guide 1(6), shown in Fig 4.



5. Wind the thread to thread guide 2 (7) from thread guide 1(6)after passing through the thread clamp (9), shown in Fig 5. 6
6. Threading the end of the thread through the take-up lever(4), shown in Fig 6
7. Threading the thread through the thread guiding spring1(11) after passing through the take-up lever(4, shown in Fig7.
8. Wind the thread through the thread guiding spring 2(14) after passing through the thimble ring (13), shown in Fig8.
9. Wind the thread end through thread guiding spring 2(14) to the pinhole of the sewing needle (16), shown in Fig9.
10. Threading can be assisted by the threader (36), shown in Fig10.



(9)

(10)

Threading the steel wire of the threader (36) to pass through the pinhole of the sewing needle (16) and then insert the thread into the steel wire of the threader (36). Hold the thread end by hand and pull back the threader (36), and the thread end will pass through the pinhole of the sewing needle (16).

▲ Attention

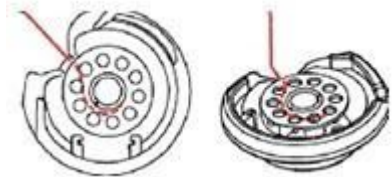
1. Make sure the thread pass through thread clamp (9). When the thread passes through thread clamp (9), poke slightly the thread clamp (9) to make sure there's no thread jamming.
2. It is strictly required to follow the above steps during threading.

Installation and extraction of Bobbin thread



1. Lift presser foot and hold the upper thread by hand with a extraction length of about 10cm, shown in Fig1.
2. Take down transparent cover (18), shown in Fig2.
3. Put the bobbin (33) into the rotating shuttle of bobbin thread, shown in Fig3.
4. Extraction the thread length about 10CM.

⚠ Attention: Make sure the clockwise direction of the thread end in putting the bobbin, shown in the right Fig:



5. Pull out 10cm thread end from the bobbin thread bobbin, shown in Fig5.
6. Put the pulled bobbin thread and upper thread to the left by left hand, shown in Fig 6.
7. Rotate counter clockwise the hand wheel (24) to make the needle move up and down after the bobbin thread and upper thread put to the left, shown in Fig7.
8. Hold upper thread by left hand during rotating the hand wheel (24) to make the needle move up and down, pull on the upper thread to bring the lower thread up, pull both thread to the back under the presser foot ,pull out 10cm shown in Fig8.

9. Put on the transparent cover (18) after the bobbin thread and upper thread pressed under the presser foot (17), shown in Fig 9.



Introduction to applicable functions

1. Please in strict accordance with the following steps in sewing.

2. Function adjustment wheel (2) is not allowed to rotate when the machine is running.

4. Adjustment of function adjustment wheel (2) requires rotating counter clockwise the hand wheel (24) to lift the sewing needle (16) to the highest position.

Texture-relative attentions:

1. The machine can't provide ordinary sewing to elastic textures, such as towel cloth, lint, elastic knitted fabric, etc.
2. Texture thickness recommended: 0.3mm-1.8mm.

Ordinary sewing

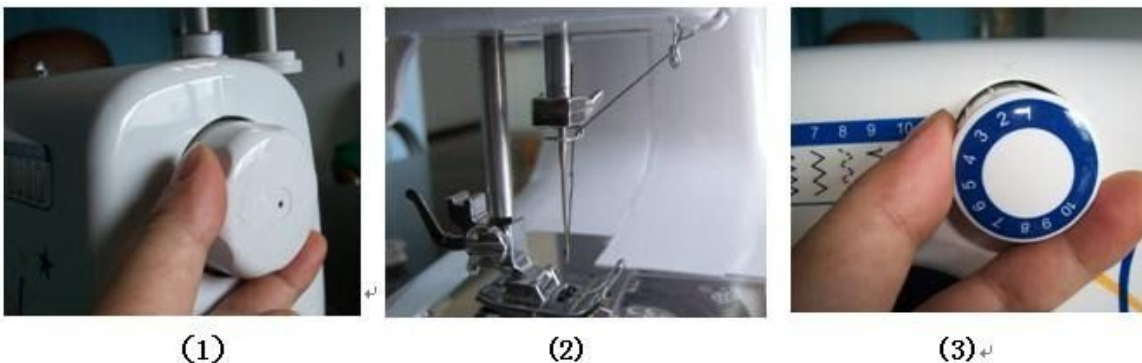
1. It requires accomplishing "preparation before operation" step by step described in the instructions before sewing.

2. Different stitches of ordinary sewing can be selected by the function adjustment wheel whose numbers are corresponding to the figure shown on functions indication panel (3), enabling you to choose different stitches according to different needs. Please refer to the following Figs for more information.



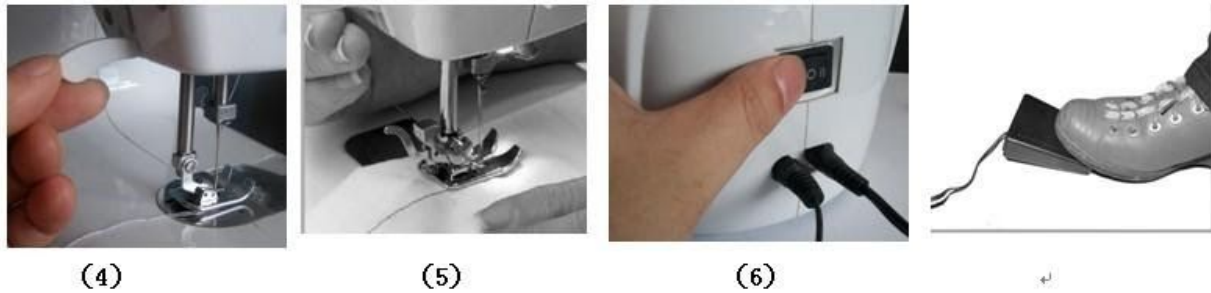
Straight sewing

It requires adjusting the function adjustment wheel (2) to function 1 . 2 or 3 for straight sewing.



1. Rotate counter clockwise the hand wheel (24), shown in Fig1.
2. Rotate counter clockwise the hand wheel (24) to lift the pinpoint of sewing needle (16) above the presser foot (17), shown in Fig2.

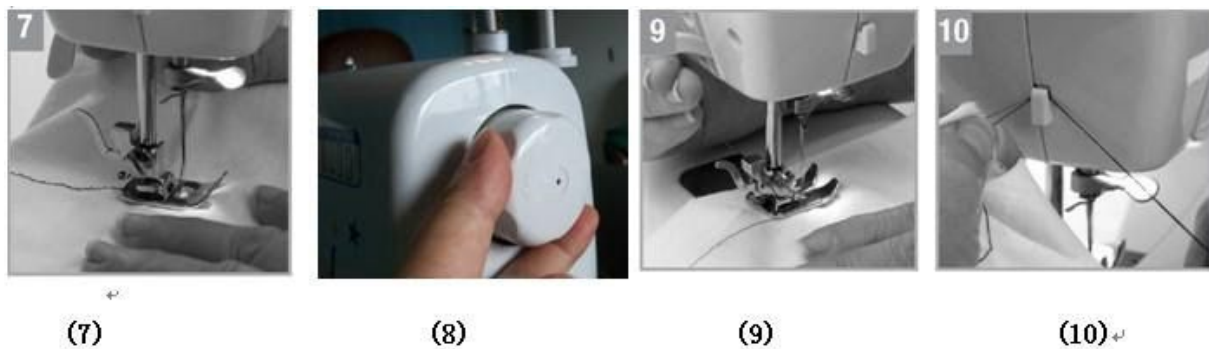
3. Adjust the function adjustment wheel (2) to function 1.2 or 3, shown in Fig.



4. Move presser bar lifter(20) upward, lift presser foot (17) and pull the bobbin thread and upper thread backward for about 10cm, shown in Fig4.

5. Put texture under the presser foot (17) and move presser bar lifter(20) downward to hold the texture, shown in Fig5.

6. Turn power switch (25) “ON” and stamp foot switch (31) gently to start sewing, shown in Fig6.



7. Guide texture gently during sewing, shown in Fig7.

8. Rotate counter clockwise the hand wheel (24) after finishing sewing to lift the sewing needle

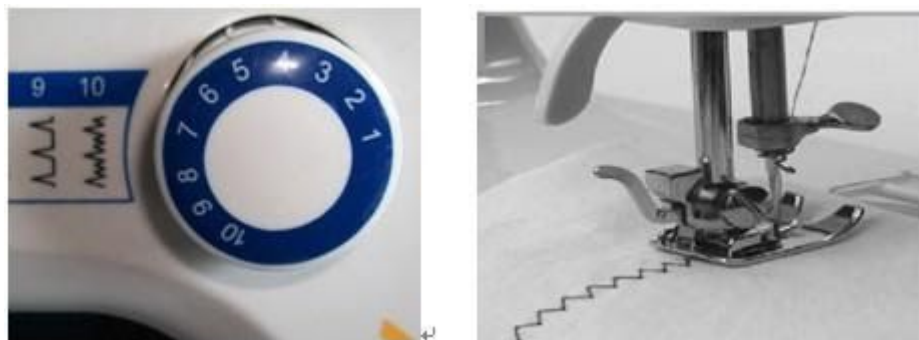
(16) to the highest position, shown in Fig8.

9. Move presser bar lifter(20) upward and lift presser foot (17), shown in Fig9.

10. Move out the texture and cut thread with thread cutter (10), shown in Fig10.

“Zigzag” sewing

Sewing method of “Zigzag” sewing is same as that of straight sewing except for adjusting the function adjustment wheel (2) to function 4, 5, 6 and 7.



1. Adjust the function adjustment wheel (2) to function 4, 5, 6 and 7, shown in Fig1.

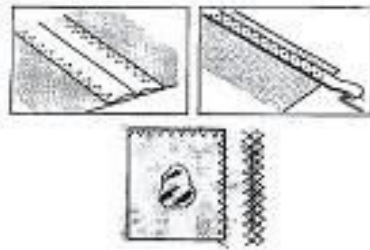
2. Sewing by same steps of straight sewing

Three-needle “Zigzag” sewing

Sewing method of three-needle “Zigzag” sewing is same as that of straight sewing except for adjusting the function adjustment wheel (2) to function 8.



(1)



(2)

1. Adjust the function adjustment wheel (2) to function 8, shown in Fig1.

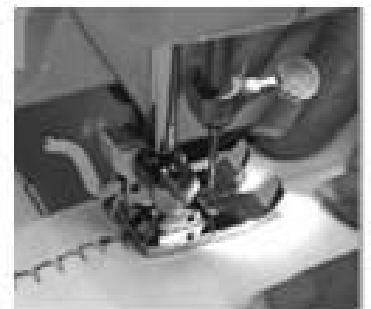
2. Sewing by same steps of straight sewing

Blind sewing

Sewing method of blind sewing is same as that of straight sewing except for adjusting the function adjustment wheel (2) to function 9 and 10.

1. Adjust the function adjustment wheel (2) to function 9 and 10, shown in Fig1.

2. Sewing by same steps of straight sewing

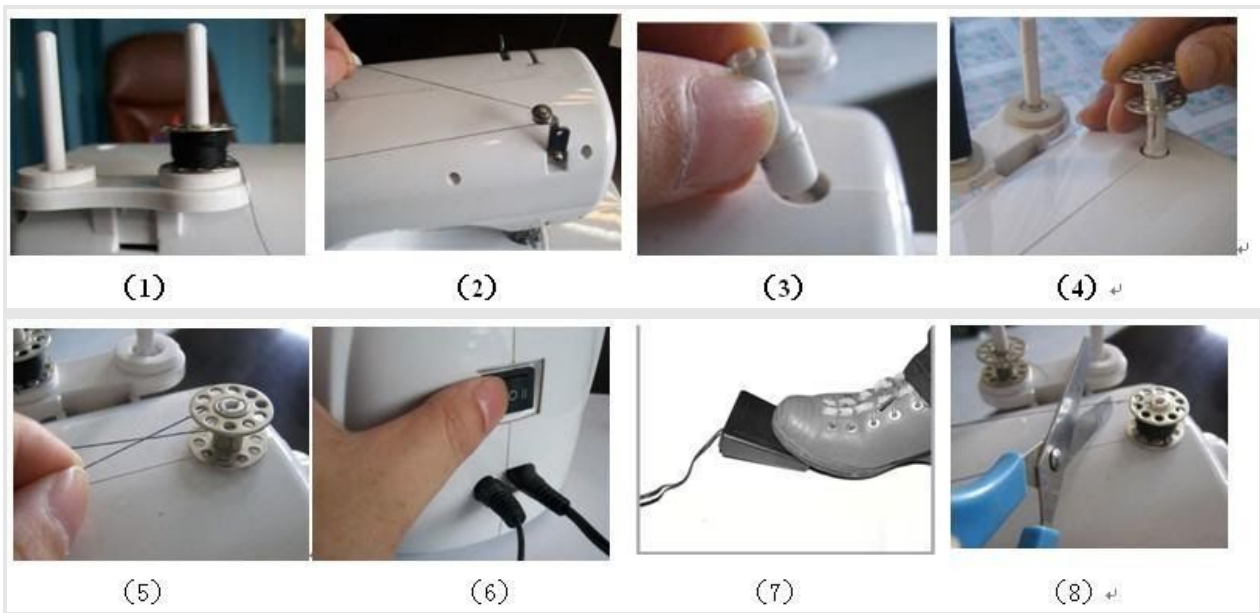


Reverse

Press reverse button when finishing sewing and sew several stitches to strengthen stitches for loose prevention, shown in the right Fig. Reverse stitches shall not exceed 5cm. Release the reverse button and the sewing machine will start sewing forward again.



Winding

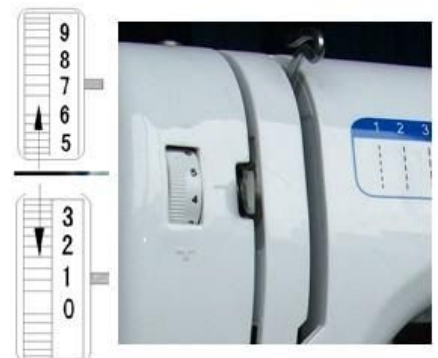


1. Put the bobbin on the Spool Pin (22), shown in Fig 1.
2. Wind the thread of the bobbin through the clamp above winding slice (5), shown in Fig2.
3. Put the winding pin(35) shown in Fig3.
4. Insert the empty bobbin onto winding pin(35), shown in Fig4.
5. Wind the thread that passed through the clamp above winding slice (5) on the empty bobbin for several cycles, shown in Fig5.
6. Turn "ON" power, shown in Fig6.
10. Stamp foot switch (31) to start winding, shown in Fig7
11. The empty bobbin will move to left automatically under the impact of stop block after winding full, shown in Fig11.
12. Release foot switch and the sewing machine will stop. Cut thread end from the wound bobbin.

Thread Tension Adjustment

Just as shown in the right Fig., it requires a slight adjustment to the thread tension due to different sewing texture's flexibility, texture material, sewing thickness, and texture layers. The thread tension adjustment wheel (8) is used for adjust thread tension. (Shown in right Fig)

Please refer to the following pictures for adjustment on thread tension





(A)

(B)

(C)

A. Normal tension (Upper thread and bobbin thread show consistency between front and back)

B. Over tension (Bobbin thread shows cycles on texture front side)

C. Over loose (Upper thread shows cycles on texture back side)

Adjustment for upper thread's tension:



(1)



(2)

1. First, poke thread clamp (9) to make sure whether thread is jammed or not.

2. Push thread tension adjustment wheel (8) and sew. Adjust to the best stitching effect as sewing, shown in Fig2.

Adjustment for abovementioned "B: over tension (Bobbin thread shows cycles on texture front side)": Adjust thread tension adjustment wheel (10) from 9 to 0, or adjust the thread tension adjustment wheel from large number to small number.

Adjustment for abovementioned "C: Over loose (Upper thread shows cycles on texture back side)":

Adjust thread tension adjustment wheel (8) from 0 to 9, or adjust the thread tension adjustment wheel from small number to large number.

Thread cutting

Use thread cutter (26) to cut thread, shown in the right Fig.



TWIN NEEDLE INSTRUCTIONS



1. Set the stitch selector dial to stitches "1, 2, or 3"
2. Insert the twin needle in the same way as a single needle.
3. Follow instructions for single needle threading. To thread the left needle, pass the thread through the left side of the needle clamp screw. To thread the right needle, pass the thread from the right side of the needle clamp screw.

Troubleshooting guide

Fault	Reason	Correction
Upper thread breakages	<ol style="list-style-type: none"> 1. Incorrect threading; 2. Thread is over tensioned; 3. Thread is too thick to the needle; 4. Sewing needle is inserted incorrectly; 5. Defective bobbin; 6. Damaged needle. 	<ol style="list-style-type: none"> 1. Re-threading; 2. Reduce tension; 3. Choose a bigger needle; 4. Remove and reinsert the needle; 5. Replace with a better bobbin; 6. Replace with better needle.
Skipped stitch	<ol style="list-style-type: none"> 1. Sewing needle is inserted incorrectly; 2. Damaged needle. 3. Incorrect size of needle; 4. Improper cooperation of presser foot; 5. Threading didn't follow requirement. 	<ol style="list-style-type: none"> 1. Change needle and reinsert; 2. Replace with good needle. 3. Choose a needle appropriate to thread and texture. 4. Check and correct presser foot configuration. 5. Re-threading according to the above correct method.
Needle breakages	<ol style="list-style-type: none"> 1. Damaged needle; 2. Sewing needle is inserted incorrectly; 3. Incorrect size of needle (for texture); 4. Improper cooperation of presser foot; 5. Over tension of thread feeding; 6. It is forbidden to pull the fabric strongly during operation; 	<ol style="list-style-type: none"> 1. Replace with good needle; 2. Insert needle correctly (flat part backwards) 3. Choose appropriate needle; 4. Install presser foot correctly; 5. Adjust appropriate tension; 6. Do not operate like this; 7. Re-threading according to the above correct method.

	7. Threading didn't follow requirement.	
Loose stitch (looping stitches)	1. Incorrect threading; 2. Incorrect installation of bobbin thread bobbin; 3. Unreasonable adjustment of stitch length; 4. Over tension	1. Check threading; 2. Put bobbin correctly; 3. Choose sewing needle with right specification; 4. Adjust tension;
Puckers or folding	1. Over bigger needle for fabric; 2. Unreasonable adjustment of fabric feeding length; 3. Over tension of upper thread.	1. Choose better needle; 2. Choose functions appropriate for short fabric feeding; 3. Adjust the tension appropriate to upper thread
Unsmooth stitches and uneven fabric feeding	1. Poor quality of thread; 2. Wrong bobbin threading; 3. Texture was jammed.	1. Choose a better thread; 2. Re-threading correctly; 3. Do not pull and drag texture during sewing.
Thread jamming	1. Upper thread was hooked on hook plate; 2. Upper thread was hooked on bobbin thread bobbin	1. It is mainly caused by the incorrect threading. Cut the upper part of the thread, remove the bobbin and smooth the hooked thread. 2. Put on the transparent cover during sewing.

Attention: Sewing needle, thread and fabrics must be well-matched.

CLEANING AND MAINTENANCE

Before cleaning, always: switch off the appliance, disconnect the apparatus and let it cool.

Clean the outside of the apparatus with a sponge or slightly wet linen.

Never plunge the apparatus in water or all other liquid!

Do not use abrasive cleaners, gritting, or metal brush or another cutting object.

STORAGE

-Ensure the unit is completely cool and dry.

- Do not wrap the cord around the appliance, as this will cause damage.
- Keep the appliance in a cool, dry place and out of reach from children.

GUARANTEE

Before being delivered, all our products are subjected to a rigorous control. This apparatus is guaranteed 24 months starting from the date of purchase by the consumer.

The documents in proof of guarantee are :

- The invoice and
- The filled and stamped warrantee plate (located on side or bottom of the gift box). Without these documents in proof, no free replacement, nor no free repair, can be carried out.

During the warranty period, we deal for free, the defects of the apparatus or the accessories, rising from a defect of materials or manufacture by repair or, replacement. The services within the framework of the guarantee do not involve any extension of the warranty period and does not give right to a new guarantee ! In the event of recourse to the guarantee, bring back the complete apparatus to your retailer, in its original packing, accompanied by the proofs of purchase.

The breakage of parts out of glass or plastic is, in all the cases, not warranted. Defects on the accessories or the wearing parts (for example: coals of engines, hooks, drive belts, remote control of replacement, teeth brushes of replacement, webs etc) as well as cleaning, maintenance or it replacement of wearing parts are not guaranteed and are thus to pay !

In the event of foreign intervention, the guarantee becomes null and void.

After flow of the warranty period, repairs can be carried out, against payment, by a specialized trade or a repair service.

SPECIFICATIONS

Sewing Machine

Rated Voltage: 6V DC
 Rated Current: 1500mA

Adapter

Input: 100-240V~ 50/60Hz / 0,4A
 Output: 6V DC 1500mA
 Norm Class II

Made in P.R.C

INFORMATION PUBLIEE INFORMATION PUBLISHED	VALEUR ET PRECISION VALUE AND PRECISION	UNITE UNIT
MARQUE	TECHWOOD	

BRAND	Sotech International Commercial Registration Number/N°SIRET: 4250992000016 33 Avenue du Maréchal de Lattre de Tassigny 94120 Fontenay sous Bois - France	
REFERENCE MODEL IDENTIFIER	TMAC-1091 - TMAC-1096	
Tension d'Entrée Input Voltage	100-240	V
Fréquence du CA d'entrée Input AC frequency	50/60	Hz
Tension de sortie Output voltage	6,0	V
Courant de sortie Output current	1,5	A
Puissance de sortie Output power	9,0	W
Rendement moyen en mode actif Average active efficiency	82,8	%
Rendement à faible charge (10%) Efficiency at low load (10%)	76,3	%
Consommation électrique hors charge No-load power consumption	0,07	W

The characteristics can change without prior notice.

This device complies with EC directives, it was controlled according to all current European directives, applicable such as: electromagnetic compatibility (EMC) and low voltage (LVD).

This device has been designed and manufactured in compliance with the latest regulations and technical requirements for safety.

Always unplug the appliance before any cleaning or maintenance operation and accessories assembly.

CAUTION: In order to minimize the risks of electric shock, In the event of breakdown, not to open the case but to call upon a qualified technician for repairs.

**Imported by Sotech International
" LE PERIPOLE " N°A-107
33, Avenue du Marechal de Lattre de Tassigny
94120 Fontenay sous-bois - France**