

Digital Glass Bathroom Scale

INSTRUCTION MANUAL



Dear consumer, Please read these instructions carefully before use in order to avoid damage due to incorrect use and to better understand the functions of this product. Please pay particular attention to the safety guide. If you pass the device on to a third party, these Operating Instructions must also be handed over. Please keep them for future references.

IMPORTANT SAFEGUARDS

- Please read these instructions carefully before use.
- Keep present instructions for future references.
- Only use the appliance for domestic purposes and household or similar applications such as:
 - staff kitchen areas, in shops, offices and other working environments;
 - By clients in hotels, motels and other residential type environments;
 - Environment type like :
 - Farm Houses • Bed and Breakfast.
- Only use the appliance in the way indicated in these instructions.
- Never use this unit near bathtub, shower, wash-hand basins or other containers with water.
- Never use this apparatus near water projections.
- Never use this apparatus with the wet hands.
- Inform potential users of these instructions.
- Never leave the appliance unsupervised when in use.
- The appliance must be used only for its intended purpose. No responsibility can be taken for any possible damage caused by incorrect use or improper handling.
- Children and persons with disabilities are not always aware of the danger posed by the use of appliances.
- This device can be used by children aged 8 years and older and adults, with reduced physical, sensory or mental capabilities or lack of experience and knowledge, if they have been given supervision or instruction concerning use of the appliance in a safe way and understand the hazards involved.

- This device is not a toy, do not leave small children or people with disabilities to play with.
- Cleaning and maintenance must not be made by children without supervision.
- In order to ensure your children's safety, please keep all packaging (plastic bags, boxes, polystyrene etc.) out of their reach.
- Caution ! Do not allow small children to play with the foil :
THERE IS A DANGER OF SUFFOCATION !
- Never immerse the appliance in water or any other liquid for any reason whatsoever.
- Never place it into the dishwasher.
- Never use the appliance near hot surfaces.
- Never use the appliance outside and always place it in a dry environment.
- Never use accessories, which are not recommended by the producer. They could constitute a danger to the user and risk to damage the appliance.
- This appliance is not intended to be operated by means of an external timer or separate remote-control system.
- Incorrect operation and improper use can damage the appliance and cause injury to the user.
- This device, designed for home use, complies with standards relating to this type of product.
- The appliance must be used and rested on a table or flat & stable surface.
- The item is not to be used, if it has been dropped or if there are visible signs of damage.
- Regarding the instructions for cleaning, thanks to refer to the below paragraph of the manual.
- This appliance is only intended for household use.

CLEANING & MAINTENANCE

Use a damp cloth to clean the balance. Never use an abrasive cleaner.

If the battery is completely worn, the display will not light up.

To replace it, remove the hatch cover on the underside of the appliance.

Remove the battery and replace it with a similar new CR-2032 battery

Be careful to respect the polarity.

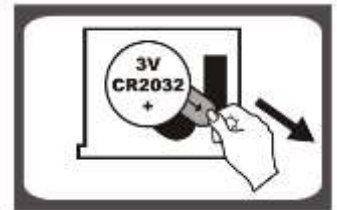
Replace the cover.

Installing or replacing batteries

If 1 X 3V DC Lithium battery (CR-2032) is required, it is included with the unit.

Remove the guard before installation. Install the battery with + at the top.

- Open and remove the housing cover.
- Remove (if necessary) the used battery (s).
- Place the new battery (s) in the battery compartment.
- Close the cover.



CONVERSION OF WEIGHT UNIT

Before weighing, select the desired unit. The digital display is adjustable and can be expressed in kg or pound.

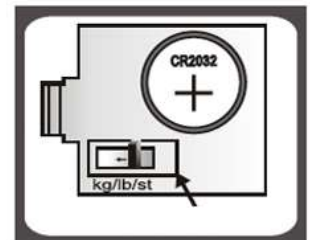
CASE N ° 1

The weight conversion selector is inside the battery compartment.

Open the compartment.

Push the selector to the desired unit: Kg / Lb / St.

1



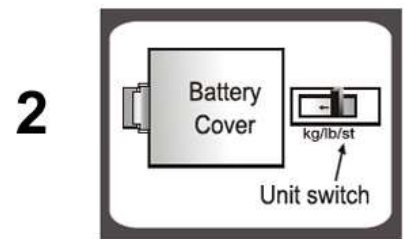
Close the compartment.

CASE N ° 2

The weight conversion selector is on the back of the balance.

Locate the selector.

Push the selector to the desired unit
: Kg / Lb / St.



CASE NO. 3

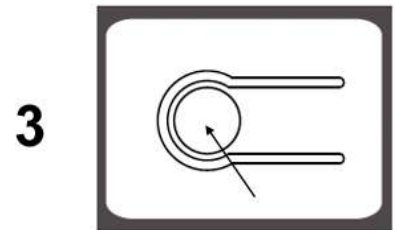
The weight conversion selector is at the back of the balance but the form is like a button.

Locate the button.

Press the button to select the desired unit: Kg / Lb / St.

Notes: The balance must be lit.

: At each press the unit changes



USE

- Place the scale on a hard, level floor. Avoid carpet and rugs.
- Press on the glass platform to start the balance or gently raise it.
- Do not move for a few seconds. The weight will be displayed continuously on the display after flashing.

Notes: Stop is automatic After 5 to 10 seconds without any weight

: If you overload the balance, you will hear a constant "beep". Doing so may damage the balance.

- Overload: When the weighing exceeds 130 kg or 300 pounds, "Err" appears on the screen.
- Negative weighing: when the weight is below the minimum (6kg or 12 pounds), "0.0" appears on the screen.
- When "LO" appears on the display, change the battery.
- The platform is made of toughened safety glass.

ADVICE

- Keep the glass platform, always dry.
- Never weigh yourself on a wet platform.
- Never drop or shock the balance. The balance may be damaged.
- The balance has sensitive electronic components. For long life, do not subject the balance to excessive temperature or humidity.
- Use the balance only on a flat surface. A carpet could change the weighing.

- Remove the battery if you do not use the balance for a very long time.
- This scale should only be used for personal and non-commercial weighing.

GUARANTEE IN ACCORDANCE WITH REGULATIONS

Before being delivered, all our products are subjected to rigorous checks. This device is guaranteed for 24 months from the date of purchase of the product by the consumer.

The warranty documents are:

- the invoice and
- the warranty certificate (located on the side or the bottom of the box) stamped and completed.

Without these supporting documents, no free replacement or free repair can be made.

During the warranty period, we take charge, free of charge, for defects in the device or accessories, resulting from a defect in materials or workmanship by repair or replacement.

Services under the legal guarantee do not entail any extension of the guarantee period and do not give the right to a new guarantee.

In the event of a warranty claim, return the complete device to your dealer, in its original packaging, accompanied by proof of purchase.

The breakage of glass or plastic parts is, in all cases, your responsibility.

Wearing parts (for example: motor brushes, hooks, drive belts, spare remote control, spare toothbrushes, saw blades etc.) as well as their cleaning, maintenance or replacement, are not guaranteed. , and are therefore at your expense.

In the event of foreign intervention, the guarantee lapses.

After expiry of the warranty period, repairs can be carried out, against payment, by a specialist dealer or a repair service.

SPECIFICATIONS

Capacity	: 150 Kg / 330Lb
Possible Unity	: Kg / lb.
Graduation	: 0,1Kg / 0,2Lb
Weight rate	: 6Kg / 150Kg – 12Lb/330Lb
Power supply	: 1 CR-2030 battery (included)
	Made in PRC

The characteristics can change without preliminary preventing

This apparatus satisfied EC directives, it was controlled according to all the European current directives, like: electromagnetic compatibility (EMC) and low tension (LVD). This apparatus was designed and manufactured in respect of the last safety regulations and technical specifications.

ENVIRONMENTAL PROTECTION

(Destruction of batteries)

To remove the battery:

- Open the battery compartment and retrieve the battery.
 - THE BATTERY MUST BE REMOVED BEFORE THE UNIT IS GIVEN TO REBUS.
 - BATTERY CONTAINS NICKEL CADMIUM AND / OR LITHIUM AND / OR NICKEL-METAL HYDRIDE, THE BATTERY MUST BE ELIMINATED IN A SAFE WAY.
- DO NOT THROW IN A TRASH CAN, BUT GIVE IN CENTRE OF WASTE.

Imported by Sotech International

" LE PERIPOLE "

33, Avenue du Marechal de Lattre de Tassigny

94120 Fontenay sous bois – France

Made in P.R.C

The symbol " CMIM " is the guarantee of compliance with optional harmonized Moroccan Standards, which reflect the essential requirements in terms of technical specifications.

These standards are not mandatory but ensuring compliance with the essential requirements.

