



**TEST REPORT
EN 62133-2**

Secondary cells and batteries containing alkaline or other non-acid electrolytes – Safety requirements for portable sealed secondary cells, and for batteries made from them, for use in portable applications – Part 2: Lithium systems

Report Number.....: PTC22111004602S-IE01
 Date of issue.....: 2023-06-06
 Total number of pages.....: 26 pages
 Tested by (name + signature).....: Chen Qiubo
 Approved by (name + signature)....: Starry Li

Chen Qiubo
Starry Li



Applicant's name.....:
 Address.....:

Test specification:

Standard.....: EN 62133-2: 2017
 Test procedure.....: Type Test
 Test result.....: Pass
 Non-standard test method.....: N/A

Testing laboratory.....: Precise Testing & Certification (Guangdong) Co., Ltd.
 Address.....: Building 1, No. 6, Tongxin Road, Dongcheng Street, Dongguan, Guangdong, China.
 Testing location.....: As above

Test item description.....: Li-ion Battery Pack
 Trade Mark.....: N/A
 Manufacturer.....: Zhejiang Kan Battery Co., Ltd
 No. 998 KAN Road, Suichang, Zhejiang, P. R. China, 323300
 Model/Type reference.....: 18650
 Ratings.....: 11.1V, 1500mAh, 16.65Wh

Note:

This report shall not be reproduced except in full, without the written approval of Precise Testing & Certification (Guangdong) Co., Ltd. This report may be altered or revised by Precise Testing & Certification (Guangdong) Co., Ltd. personnel only, and shall be noted in the revision section of the report. The test result in the report only apply to the tested samples.



**List of Attachments (including a total number of pages in each attachment):**

Attachment 1: Photo Documentation (4 pages).

Summary of testing:**Tests performed (name of test and test clause):**

cl.5.6.2 Design recommendation;
cl.7.1 Charging procedure for test purposes (for Cells and Batteries);
cl.7.2.1 Continuous charging at constant voltage (Cells);
cl.7.2.2 Case stress at high ambient temperature (Batteries);
cl.7.3.1 External short-circuit (Cells);
cl.7.3.2 External short-circuit (Batteries);
cl.7.3.3 Free fall (Cells and Batteries);
cl.7.3.4 Thermal abuse (Cells);
cl.7.3.5 Crush (Cells);
cl.7.3.6 Over-charging of battery;
cl.7.3.7 Forced discharge (Cells);
cl.7.3.8 Mechanical tests (Batteries).

cl.7.3.9 was not evaluated by client request, and the applicant declares that this cell *isn't to be sold in* France, Japan, Republic of Korea and Switzerland.

Tests are made with the number of cells and batteries specified in EN 62133-2: 2017 Table 1.

Testing location:

Precise Testing & Certification (Guangdong) Co., Ltd.

Building 1, No. 6, Tongxin Road, Dongcheng Street, Dongguan, Guangdong, China.

Summary of compliance with National Differences (List of countries addressed):

N/A

Copy of marking plate:

The artwork below may be only a draft. The use of certification marks on a product must be authorized by the respective NCBs that own these marks.

Red (+) Black (-)

Li-ion Battery Pack

Model: 18650

11.1V, 1500mAh, 16.65Wh

3INR19/66 2022.10

Manufacturer: Zhejiang Kan Battery Co., Ltd

CAUTION:

-DO NOT CONNECT IMPROPERLY

-DO NOT DISPOSE OF IN FIRE OR EXPOSE TO EXCESS HEAT

-DO NOT CRUSH PUNCTURE INCINERATE OR SHORT CIRCUIT



Test item particulars..... :	
Classification of installation and use..... :	To be defined in final product
Supply Connection..... :	DC connector
Recommend charging method declared by the manufacturer..... :	Charging the battery with 300mA constant current and 12.6V constant voltage until the current reduces to 30mA at ambient 20°C±5°C
Discharge current (0,2 It A)..... :	300mA
Specified final voltage..... :	8.4V
Upper limit charging voltage per cell..... :	4.25V
Maximum charging current..... :	1500mA
Charging temperature upper limit..... :	45°C
Charging temperature lower limit..... :	0°C
Polymer cell electrolyte type..... :	<input type="checkbox"/> gel polymer <input type="checkbox"/> solid polymer <input checked="" type="checkbox"/> N/A
Possible test case verdicts:	
- test case does not apply to the test object..... :	N/A
- test object does meet the requirement..... :	P (Pass)
- test object does not meet the requirement..... :	F (Fail)
Testing..... :	
Date of receipt of test item..... :	2023-02-27
Date (s) of performance of tests..... :	2023-02-28 to 2023-03-14
General remarks:	
<p>The test results presented in this report relate only to the object tested. This report shall not be reproduced, except in full, without the written approval of the Issuing testing laboratory. "(See Enclosure #)" refers to additional information appended to the report. "(See appended table)" refers to a table appended to the report.</p>	
<p>Throughout this report a <input type="checkbox"/> comma / <input checked="" type="checkbox"/> point is used as the decimal separator.</p>	
Name and address of factory (ies)..... :	Same as manufacturer

**General product information and other remarks:**

This battery is constructed with three lithium-ion cells in 3S1P, and has overcharge, over-discharge, over current and short-circuits proof circuit.

The main features of the battery are shown as below (clause 7.1.1):

Model	Nominal capacity	Nominal voltage	Nominal Charge Current	Nominal Discharge Current	Maximum Charge Current	Maximum Discharge Current	Maximum Charge Voltage	Cut-off Voltage
18650 (Battery)	1500mAh	11.1V	300mA	300mA	1500mA	7000mA	12.75V	8.4V

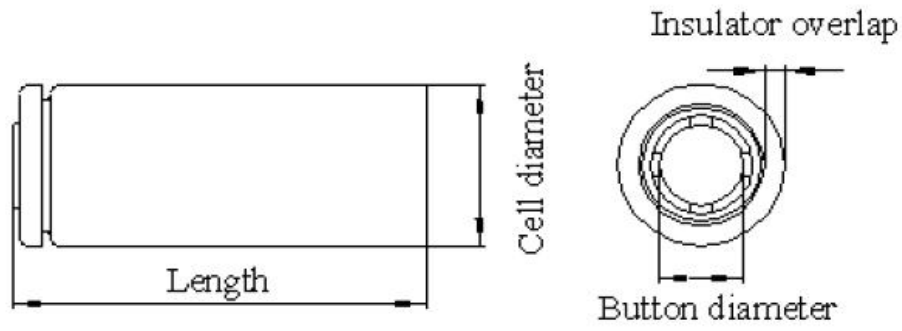
The main features of the cell in the battery are shown as below (clause 7.1.1):

Model	Nominal capacity	Nominal voltage	Nominal Charge Current	Nominal Discharge Current	Maximum Charge Current	Maximum Discharge Current	Maximum Charge Voltage	Cut-off Voltage
18650 (Cell)	1500mAh	3.7V	300mA	300mA	1500mA	7500mA	4.25V	2.5V

The main features of the cell in the battery are shown as below (clause 7.1.2):

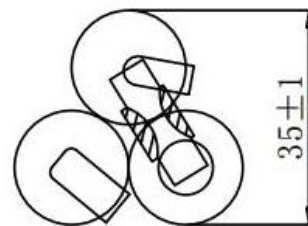
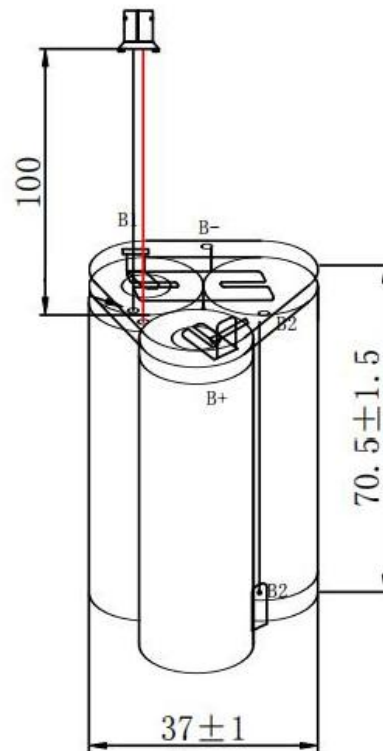
Model	Upper limit charge voltage	Taper-off current	Lower charge temperature	Upper charge temperature
18650 (Cell)	4.25V	75mA	0°C	45°C

Construction:



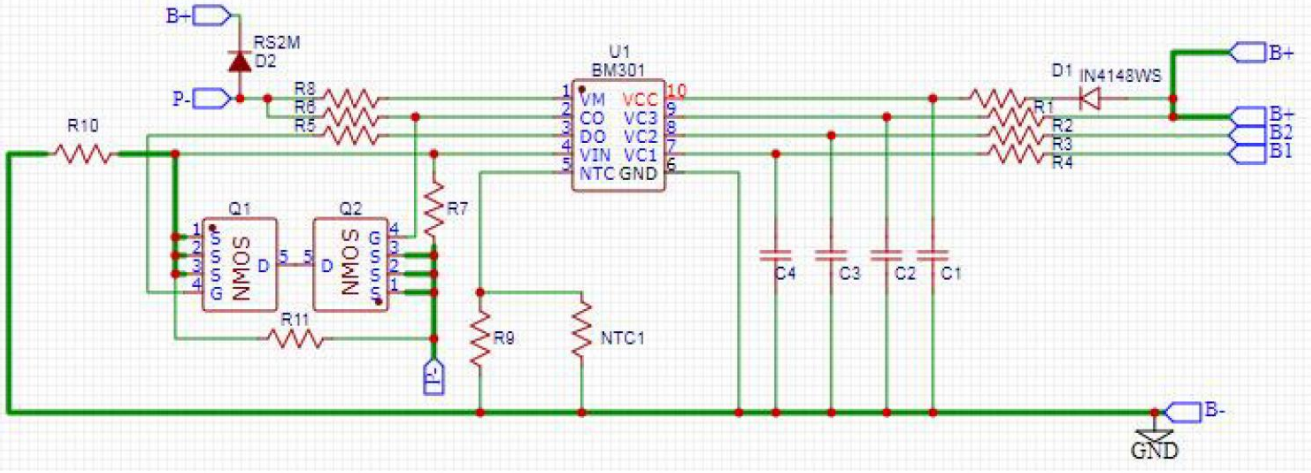
Cell diameter	Length	Button diameter
MAX 18.5	MAX 65.5	≥6.0

Cell (Unit: mm)



Battery (Unit: mm)

Circuit diagram:





EN 62133-2: 2017			
Clause	Requirement + Test	Result - Remark	Verdict
4	PARAMETER MEASUREMENT TOLERANCES		P
	Parameter measurement tolerances		P
5	GENERAL SAFETY CONSIDERATIONS		P
5.1	General		P
	Cells and batteries so designed and constructed that they are safe under conditions of both intended use and reasonably foreseeable misuse		P
5.2	Insulation and wiring		P
	The insulation resistance between the positive terminal and externally exposed metal surfaces of the battery (excluding electrical contact surfaces) is not less than 5 MΩ	No metal case exists.	N/A
	Insulation resistance (MΩ)..... :		—
	Internal wiring and insulation are sufficient to withstand maximum anticipated current, voltage and temperature requirements		P
	Orientation of wiring maintains adequate clearance and creep age distances between conductors		P
	Mechanical integrity of internal connections accommodates reasonably foreseeable misuse		P
5.3	Venting		P
	Battery cases and cells incorporate a pressure relief mechanism or are constructed so that they relieve excessive internal pressure at a value and rate that will preclude rupture, explosion and self-ignition	Venting mechanism exists on the top of cylindrical cell.	P
	Encapsulation used to support cells within an outer casing does not cause the battery to overheat during normal operation nor inhibit pressure relief		N/A
5.4	Temperature, voltage and current management		P
	Batteries are designed such that abnormal temperature rise conditions are prevented	Overcharge, over discharge, over current and short-circuit proof circuit used in this battery. See tests of clause 7.	P
	Batteries are designed to be within temperature, voltage and current limits specified by the cell manufacturer	See above.	P
	Batteries are provided with specifications and charging instructions for equipment manufacturers so that specified chargers are designed to maintain charging within the temperature, voltage and current limits specified	The charging limits specified in the manufacturer's specification.	P
5.5	Terminal contacts		P
	The size and shape of the terminal contacts ensure that they can carry the maximum anticipated current	DC Connector complied with the requirements.	P

EN 62133-2: 2017			
Clause	Requirement + Test	Result - Remark	Verdict
	External terminal contact surfaces are formed from conductive materials with good mechanical strength and corrosion resistance		P
	Terminal contacts are arranged to minimize the risk of short-circuit		N/A
5.6	Assembly of cells into batteries		P
5.6.1	General		P
	Each battery have an independent control and protection for current, voltage, temperature and any other parameter required for safety and to maintain the cells within their operating region	3S1P	P
	This protection may be provided external to the battery such as within the charger or the end devices		N/A
	If protection is external to the battery, the manufacturer of the battery provide this safety relevant information to the external device manufacturer for implementation		N/A
	If there is more than one battery housed in a single battery case, each battery have protective circuitry that can maintain the cells within their operating regions		N/A
	Manufacturers of cells specify current, voltage and temperature limits so that the battery manufacturer/designer may ensure proper design and assembly	Current, Voltage and temperature limits specified by cell manufacturer.	P
	Batteries that are designed for the selective discharge of a portion of their series connected cells incorporate circuitry to prevent operation of cells outside the limits specified by the cell manufacturer		P
	Protective circuit components added as appropriate and consideration given to the end-device application		P
	The manufacturer of the battery provide a safety analysis of the battery safety circuitry with a test report including a fault analysis of the protection circuit under both charging and discharging conditions confirming the compliance	Safety analysis report provided by manufacturer.	P
5.6.2	Design recommendation		P
	For the battery consisting of a single cell or a single cellblock, it is recommended that the charging voltage of the cell does not exceed the upper limit of the charging voltage specified in Table 2		N/A
	For the battery consisting of series-connected plural single cells or series-connected plural cellblocks, it is recommended that the voltages of any one of the single cells or single cellblocks does not exceed the upper limit of the charging voltage, specified in Table 2, by monitoring the voltage of every single cell or the single cellblocks	Max. Charging voltage :4.25V, In excess of 4.25V as specified in Clause 7.1.2 of Table 2.	P
	For the battery consisting of series-connected plural single cells or series-connected plural cellblocks, it is		N/A

EN 62133-2: 2017			
Clause	Requirement + Test	Result - Remark	Verdict
	recommended that charging is stopped when the upper limit of the charging voltage is exceeded for any one of the single cells or single cellblocks by measuring the voltage of every single cell or the single cellblocks		
	For batteries consisting of series-connected cells or cell blocks, nominal charge voltage not be counted as an overcharge protection		N/A
	For batteries consisting of series-connected cells or cell blocks, cells have closely matched capacities, be of the same design, be of the same chemistry and be from the same manufacturer		N/A
	It is recommended that the cells and cell blocks not discharged beyond the cell manufacturer's specified final voltage	Final voltage of cell: 2.5V, not exceed the final voltage specified by the cell manufacturer.	P
	For batteries consisting of series-connected cells or cell blocks, cell balancing circuitry incorporated into the battery management system		N/A
5.6.3	Mechanical protection for cells and components of batteries		P
	Mechanical protection for cells, cell connections and control circuits within the battery provided to prevent damage as a result of intended use and reasonably foreseeable misuse	Mechanical protection for cell connections and control circuits provided.	P
	The mechanical protection can be provided by the battery case or it can be provided by the end product enclosure for those batteries intended for building into an end product	Build-in batteries, mechanical protection for cells should be provided by end product.	N/A
	The battery case and compartments housing cells designed to accommodate cell dimensional tolerances during charging and discharging as recommended by the cell manufacturer		P
	For batteries intended for building into a portable end product, testing with the battery installed within the end product considered when conducting mechanical tests		N/A
5.7	Quality plan		P
	The manufacturer prepares and implements a quality plan that defines procedures for the inspection of materials, components, cells and batteries and which covers the whole process of producing each type of cell or battery	Complied. Quality plan provided.	P
5.8	Battery safety components		P
	According annex F	See TABLE: Critical components information.	P
6	TYPE TEST AND SAMPLE SIZE		P
	Tests are made with the number of cells or batteries		P



EN 62133-2: 2017			
Clause	Requirement + Test	Result - Remark	Verdict

	specified in Table 1 using cells or batteries that are not more than six months old		
	Coin cells with resistance $\leq 3 \Omega$ (measured according annex D) are tested according table 1	Not coin cells.	N/A
	Unless otherwise specified, tests are carried out in an ambient temperature of $20 \text{ }^\circ\text{C} \pm 5 \text{ }^\circ\text{C}$		P
	The safety analysis of 5.6.1 identify those components of the protection circuit that are critical for short-circuit, overcharge and over discharge protection		P
	When conducting the short-circuit test, consideration given to the simulation of any single fault condition that is likely to occur in the protecting circuit that would affect the short-circuit test	See clause 7.3.2.	P

7	SPECIFIC REQUIREMENTS AND TESTS		P
7.1	Charging procedure for test purposes		P
7.1.1	First procedure		P
	This charging procedure applies to sub clauses other than those specified in 7.1.2		P
	Unless otherwise stated in this document, the charging procedure for test purposes is carried out in an ambient temperature of $20 \text{ }^\circ\text{C} \pm 5 \text{ }^\circ\text{C}$, using the method declared by the manufacturer	See page 4.	P
	Prior to charging, the battery have been discharged at $20 \text{ }^\circ\text{C} \pm 5 \text{ }^\circ\text{C}$ at a constant current of 0,2 It A down to a specified final voltage	See page 4.	P
7.1.2	Second procedure		P
	This charging procedure applies only to 7.3.1, 7.3.4, 7.3.5, and 7.3.9		P
	After stabilization for 1 h and 4 h, respectively, at ambient temperature of highest test temperature and lowest test temperature, as specified in Table 2, cells are charged by using the upper limit charging voltage and maximum charging current, until the charging current is reduced to 0,05 It A, using a constant voltage charging method.	Charge temperature 0-45°C declared. 45°C used for upper limit tests; 0°C used for lower limit tests.	P
7.2	Intended use		P
7.2.1	Continuous charging at constant voltage (cells)	Tested complied.	P
	Fully charged cells are subjected for 7 days to a charge using the charging method for current and standard voltage specified by the cell manufacturer	Charging for 7 days with 300mA.	P
	Results: No fire. No explosion. No leakage..... :	(See appended table 7.2.1)	P
7.2.2	Case stress at high ambient temperature (battery)	Tested as client requested.	P
	Oven temperature ($^\circ\text{C}$)..... :	70°C	—
	Results: No physical distortion of the battery case	No physical distortion of the	P



EN 62133-2: 2017			
Clause	Requirement + Test	Result - Remark	Verdict

	resulting in exposure of internal protective components and cells	battery case resulting	
7.3	Reasonably foreseeable misuse		P
7.3.1	External short-circuit (cell)	Tested complied.	P
	The cells were tested until one of the following occurred:		P
	- 24 hours elapsed; or		N/A
	- The case temperature declined by 20% of the maximum temperature rise		P
	Results: No fire. No explosion..... :	(See appended table 7.3.1)	P
7.3.2	External short-circuit (battery)	Tested complied.	P
	The batteries were tested until one of the following occurred:		P
	- 24 hours elapsed; or		N/A
	- The case temperature declined by 20 % of the maximum temperature rise		P
	In case of rapid decline in short circuit current, the battery pack remained on test for an additional one hour after the current reached a low end steady state condition		P
	A single fault in the discharge protection circuit conducted on one to four (depending upon the protection circuit) of the five samples before conducting the short-circuit test	Single fault conducted on four samples.	P
	A single fault applies to protective component parts such as MOSFET, fuse, thermostat or positive temperature coefficient (PTC) thermistor	Single fault applies on MOSFET (Q1).	P
	Results: No fire. No explosion..... :	(See appended table 7.3.2)	P
7.3.3	Free fall	Tested complied.	P
	Results: No fire. No explosion	No fire. No explosion	P
7.3.4	Thermal abuse (cells)	Tested complied.	P
	Oven temperature (°C)..... :		—
	Results: No fire. No explosion		P
7.3.5	Crush (cells)	Tested complied.	P
	The crushing force was released upon:		P
	- The maximum force of 13 kN±0,78kN has been applied; or		P
	- An abrupt voltage drop of one-third of the original voltage has been obtained		N/A
	Results: No fire. No explosion..... :	(See appended table 7.3.5)	P
7.3.6	Over-charging of battery	Tested complied.	P
	The supply voltage which is:		P
	- 1,4 times the upper limit charging voltage presented in		N/A



EN 62133-2: 2017			
Clause	Requirement + Test	Result - Remark	Verdict
	Table A.1 (but not to exceed 6,0 V) for single cell/cell block batteries or		
	- 1,2 times the upper limit charging voltage resented in Table A.1 per cell for series connected multi-cell batteries, and	15.3V applied.	P
	- Sufficient to maintain a current of 2,0 It A throughout the duration of the test or until the supply voltage is reached		P
	Test was continued until the temperature of the outer casing:		P
	- Reached steady state conditions (less than 10°C change in 30-minute period); or		N/A
	- Returned to ambient		P
	Results: No fire. No explosion..... :	(See appended table 7.3.6)	P
7.3.7	Forced discharge (cells)	Tested complied.	P
	If the discharge voltage reaches the negative value of upper limit charging voltage within the testing duration, the voltage is maintained at the negative value of the upper limit charging voltage by reducing the current for the remainder of the testing duration		N/A
	If the discharge voltage does not reach the negative value of upper limit charging voltage within the testing duration, the test is terminated at the end of the testing duration		P
	Results: No fire. No explosion..... :	(See appended table 7.3.7)	P
7.3.8	Mechanical tests (batteries)		P
7.3.8.1	Vibration	Tested complied.	P
	Results: No fire, no explosion, no rupture, no leakage or venting..... :	(See appended table 7.3.8.1)	P
7.3.8.2	Mechanical shock	Tested complied.	P
	Results: No leakage, no venting, no rupture, no explosion and no fire..... :	(See appended table 7.3.8.2)	P
7.3.9	Design evaluation – Forced internal short-circuit (cells)		N/A
	The cells complied with national requirement for..... :		—
	The pressing was stopped upon:		N/A
	- A voltage drop of 50 mV has been detected; or		N/A
	- The pressing force of 800 N (cylindrical cells) or 400 N (prismatic cells) has been reached		N/A
	Results: No fire..... :		N/A

8	INFORMATION FOR SAFETY		P
8.1	General		P
	Manufacturers of secondary cells ensure that information is provided about current, voltage and	Information for safety mentioned in manufacturer's	P

EN 62133-2: 2017			
Clause	Requirement + Test	Result - Remark	Verdict
	temperature limits of their products	specifications.	
	Manufacturers of batteries ensure that equipment manufacturers and, in the case of direct sales, end-users are provided with information to minimize and mitigate hazards	Information for safety mentioned in manufacturer's specifications.	P
	Systems analyses performed by device manufacturers to ensure that a particular battery design prevents hazards from occurring during use of a product		N/A
	As appropriate, any information relating to hazard avoidance resulting from a system analysis provided to the end user		N/A
	Do not allow children to replace batteries without adult supervision		N/A
8.2	Small cell and battery safety information	Not small cell and battery.	N/A
	The following warning language is to be provided with the information packaged with the small cells and batteries or equipment using them:		N/A
	- Keep small cells and batteries which are considered swallow able out of the reach of children		N/A
	- Swallowing may lead to burns, perforation of soft tissue, and death. Severe burns can occur within 2 h of ingestion		N/A
	- In case of ingestion of a cell or battery, seek medical assistance promptly		N/A

9	MARKING		P
9.1	Cell marking	The final product is battery.	N/A
	Cells marked as specified in IEC 61960, except coin cells		N/A
	Coin cells whose external surface area is too small to accommodate the markings on the cells show the designation and polarity		N/A
	By agreement between the cell manufacturer and the battery and/or end product manufacturer, component cells used in the manufacture of a battery need not be marked		N/A
9.2	Battery marking		P
	Batteries marked as specified in IEC 61960, except for coin batteries	The battery is marked in accordance with IEC 61960, also see page 3.	P
	Coin batteries whose external surface area is too small to accommodate the markings on the batteries show the designation and polarity. Batteries also marked with an appropriate caution statement		N/A



EN 62133-2: 2017			
Clause	Requirement + Test	Result - Remark	Verdict
	Terminals have clear polarity marking on the external surface of the battery		P
	Batteries with keyed external connectors designed for connection to specific end products need not be marked with polarity markings if the design of the external connector prevents reverse polarity connections		N/A
9.3	Caution for ingestion of small cells and batteries		N/A
	Coin cells and batteries identified as small batteries according to 8.2 include a caution statement regarding the hazards of ingestion in accordance with 8.2	Not coin cells and batteries.	N/A
	When small cells and batteries are intended for direct sale in consumer-replaceable applications, caution for ingestion given on the immediate package	Not small cell and battery.	N/A
9.4	Other information		P
	Storage and disposal instructions	Information for safety mentioned in manufacturer's specifications.	P
	Recommended charging instructions	Information for safety mentioned in manufacturer's specifications.	P
10	PACKAGING AND TRANSPORT		P
	Packaging for coin cells not small enough to fit within the limits of the ingestion gauge of Figure 3	Not coin cells.	N/A
	The materials and packaging design are chosen so as to prevent the development of unintentional electrical conduction, corrosion of the terminals and ingress of environmental contaminants		P
ANNEX A	CHARGING AND DISCHARGING RANGE OF SECONDARY LITHIUM ION CELLS FOR SAFE USE		P
A.1	General		P
A.2	Safety of lithium ion secondary battery	Complied.	P
A.3	Consideration on charging voltage	Complied.	P
A.3.1	General		P
A.3.2	Upper limit charging voltage	4.25V	P
A.3.2.1	General		P
A.3.2.2	Explanation of safety viewpoint		N/A
A.3.2.3	Safety requirements, when different upper limit charging voltage is applied	4.25V applied.	N/A
A.4	Consideration of temperature and charging current		P
A.4.1	General		P

EN 62133-2: 2017			
Clause	Requirement + Test	Result - Remark	Verdict
A.4.2	Recommended temperature range	See A.4.2.2.	P
A.4.2.1	General		P
A.4.2.2	Safety consideration when a different recommended temperature range is applied	Charging temperature declared by client is: 0~45°C.	P
A.4.3	High temperature range	Not higher than the temperature range specific in this standard.	N/A
A.4.3.1	General		N/A
A.4.3.2	Explanation of safety viewpoint		N/A
A.4.3.3	Safety considerations when specifying charging conditions in the high temperature range		N/A
A.4.3.4	Safety considerations when specifying a new upper limit in the high temperature range		N/A
A.4.4	Low temperature range	Charging low temperature declared by client is 0°C	P
A.4.4.1	General		P
A.4.4.2	Explanation of safety viewpoint		P
A.4.4.3	Safety considerations, when specifying charging conditions in the low temperature range		P
A.4.4.4	Safety considerations when specifying a new lower limit in the low temperature range	No documents provided by client explaining reason of 0°C as low limit temperature limit, -5°C used to meet the requirement.	P
A.4.5	Scope of the application of charging current		P
A.4.6	Consideration of discharge		P
A.4.6.1	General		P
A.4.6.2	Final discharge voltage and explanation of safety viewpoint		P
A.4.6.3	Discharge current and temperature range		P
A.4.6.4	Scope of application of the discharging current		P
A.5	Sample preparation		N/A
A.5.1	General		N/A
A.5.2	Insertion procedure for nickel particle to generate internal short		N/A
A.5.3	Disassembly of charged cell		N/A
A.5.4	Shape of nickel particle		N/A
A.5.5	Insertion of nickel particle in cylindrical cell		N/A
A.5.5.1	Insertion of nickel particle in winding core		N/A
A.5.5.2	Marking the position of the nickel particle on both ends		N/A



EN 62133-2: 2017			
Clause	Requirement + Test	Result - Remark	Verdict

	of the winding core of the separator		
A.5.6	Insertion of nickel particle in prismatic cell		N/A
A.6	Experimental procedure of the forced internal short-circuit test		N/A
A.6.1	Material and tools for preparation of nickel particle		N/A
A.6.2	Example of a nickel particle preparation procedure		N/A
A.6.3	Positioning (or placement) of a nickel particle		N/A
A.6.4	Damaged separator precaution		N/A
A.6.5	Caution for rewinding separator and electrode		N/A
A.6.6	Insulation film for preventing short-circuit		N/A
A.6.7	Caution when disassembling a cell		N/A
A.6.8	Protective equipment for safety		N/A
A.6.9	Caution in the case of fire during disassembling		N/A
A.6.10	Caution for the disassembling process and pressing the electrode core		N/A
A.6.11	Recommended specifications for the pressing device		N/A

ANNEX B	RECOMMENDATIONS TO EQUIPMENT MANUFACTURERS AND BATTERY ASSEMBLERS		N/A
----------------	--	--	-----

ANNEX C	RECOMMENDATIONS TO THE END-USERS		N/A
----------------	---	--	-----

ANNEX D	MEASUREMENT OF THE INTERNAL AC RESISTANCE FOR COIN CELLS		N/A
D.1	General	Not coin cells.	N/A
D.2	Method		N/A
	A sample size of three coin cells is required for this measurement.....:	(See appended table D.2)	N/A
	Coin cells with an internal resistance of less than or equal to 3 Ω are subjected to the testing according to Clause 6 and Table 1		N/A
	Coin cells with an internal resistance greater than 3 Ω require no further testing		N/A

ANNEX E	PACKAGING AND TRANSPORT		P
----------------	--------------------------------	--	---

ANNEX F	COMPONENT STANDARDS REFERENCES		N/A
----------------	---------------------------------------	--	-----

TABLE: Critical components information					P
Object/part no.	Manufacturer/ trademark	Type/model	Technical data	Standard	Mark(s) of conformity ¹⁾
Cell	Zhejiang KAN Battery Co., Ltd	18650	3.7V, 1500mAh	EN 62133:2-2 017	Tested with appliance
- Electrolyte	Henan Huarui New Material Co., Ltd.	KAN07	LiPF ₆ , DMC, DVC, EC	--	--
- Separator	Xinxiang sunray Battery Materials Co. , Ltd.	Dry process	PE, Three layers	--	--
- Positive Electrode	Xinxiang Tianli Energy Co., Ltd	TL510	Li(Ni _{0.5} Co _{0.2} Mn _{0.3})O ₂	--	--
- Negative Electrode	Shandong Tianan Huali New Material Technology Co. , Ltd.	TAG-15	Graphite, etc.	--	--
Protection IC (U1)	BYD MICROELECTRONICS CO.,LTD	BM301TNDB-M10A	Overcharge detection voltage: 4.25±0.025V, overdischarge detection voltage: 2.8V±0.08V, T _{opr.} : -40-85°C	--	Tested with appliance
MOSFET (Q1)	WUXI QIANYE MICRO-NANO ELECTRONIC.,LTD	FNK03N06E	V _{DS} :30V, V _{GS} : ±20V, I _D : 80A, T _J : -55°C~150°C	--	Tested with appliance
PCB	Shenzhen RisingSun Circuit Technology Co Ltd	RS-M	130°C, V-0	UL 796	UL E513042
Wire	XINYA ELECTRONIC CO LTD	1007	22AWG, 80°C, 300V	UL 758	UL E170689
Connector	ZHEJIANG HONGXING ELECTRICAL CO.,LTD	PH-2Y	250V, 2A	--	--
Supplementary information:					
¹⁾ Provided evidence ensures the agreed level of compliance.					



7.2.1				TABLE: Continuous charging at constant voltage (cells)	P
Sample no.	Recommended charging voltage V _c (Vdc)	Recommended charging current I _{rec} (mA)	OCV before test (Vdc)	Results	
Cell #1	4.25	300	4.22	P	
Cell #2	4.25	300	4.23	P	
Cell #3	4.25	300	4.22	P	
Cell #4	4.25	300	4.22	P	
Cell #5	4.25	300	4.22	P	

Supplementary information:

- No fire or explosion
- No leakage

7.3.1					TABLE: External short-circuit (cell)	P
Sample no.	Ambient T (°C)	OCV before test (Vdc)	Resistance of circuit (mΩ)	Maximum case temperature rise ΔT, (°C)	Results	
Samples charged at charging temperature upper limit (45°C)						
Cell #6	55.3	4.22	88	108.4	P	
Cell #7	55.3	4.22	81	105.5	P	
Cell #8	55.3	4.23	82	110.0	P	
Cell #9	55.3	4.23	87	115.1	P	
Cell #10	55.3	4.22	81	115.8	P	
Samples charged at charging temperature lower limit (-5°C)						
Cell #11	55.7	4.16	87	119.4	P	
Cell #12	55.7	4.17	85	107.0	P	
Cell #13	55.7	4.16	87	103.1	P	
Cell #14	55.7	4.16	87	102.1	P	
Cell #15	55.7	4.17	84	108.1	P	

Supplementary information:

- No fire or explosion



7.3.2 TABLE: External short-circuit (battery)						P
Sample no.	Ambient(°C)	OCV before test (Vdc)	Resistance of circuit (mΩ)	Maximum case temperature rise ΔT , (°C)	Component single fault condition	Results
Battery #4	23.6	12.67	80	103.5	MOSFET (Q1) Short circuit	P
Battery #5	23.6	12.66	82	98.7	MOSFET (Q1) Short circuit	P
Battery #6	23.6	12.68	81	97.5	MOSFET (Q1) Short circuit	P
Battery #7	23.6	12.65	85	110.7	MOSFET (Q1) Short circuit	P
Battery #8	23.6	12.53	89	24.3	--	P
Supplementary information:						
- No fire or explosion						

7.3.5 TABLE: Crush (cells)					P
Sample no.	OCV before test (Vdc)	OCV at removal of crushing force (Vdc)	Maximum force applied to the cell during crush (kN)	Results	
Samples charged at charging temperature upper limit (45°C)					
Cell #29	4.23	4.23	13	P	
Cell #30	4.22	4.22	13	P	
Cell #31	4.23	4.22	13	P	
Cell #32	4.23	4.23	13	P	
Cell #33	4.23	4.22	13	P	
Samples charged at charging temperature lower limit (-5°C)					
Cell #34	4.16	4.15	13	P	
Cell #35	4.17	4.17	13	P	
Cell #36	4.17	4.17	13	P	
Cell #37	4.17	4.16	13	P	
Cell #38	4.16	4.16	13	P	
Supplementary information:					
- No fire or explosion					



7.3.6		TABLE: Over-charging of battery			P
Constant charging current (A).....:		3			—
Supply voltage (Vdc).....:		15.3			—
Sample no.	OCV before charging (Vdc)	Total charging time (minute)	Maximum outer case temperature (°C)	Results	
Battery #12	9.60	90	33.4	P	
Battery #13	9.58	90	35.7	P	
Battery #14	9.58	90	34.6	P	
Battery #15	9.57	90	34.0	P	
Battery #16	9.55	90	33.8	P	
Supplementary information:					
- No fire or explosion					

7.3.7		TABLE: Forced discharge (cells)			P
Sample no.	OCV before application of reverse charge (Vdc)	Measured reverse charge I _t (mA)	Lower limit discharge voltage (Vdc)	Results	
Cell #39	3.19	1500	2.5	P	
Cell #40	3.18	1500	2.5	P	
Cell #41	3.19	1500	2.5	P	
Cell #42	3.20	1500	2.5	P	
Cell #43	3.19	1500	2.5	P	
Supplementary information:					
- No fire or explosion					

7.3.8.1		TABLE: Vibration				P
Sample no.	OCV before test (Vdc)	OCV after test (Vdc)	Mass before test (g)	Mass after test (g)	Results	
Battery #17	12.67	12.66	133.526	133.526	P	
Battery #18	12.65	12.65	133.341	133.341	P	
Battery #19	12.54	12.53	133.581	133.580	P	
Supplementary information:						
- No fire or explosion						
- No rupture						
- No leakage						
- No venting						



7.3.8.2					TABLE: Mechanical shock	P
Sample no.	OCV before test (Vdc)	OCV after test (Vdc)	Mass before test (g)	Mass after test (g)	Results	
Battery #20	12.68	12.68	133.492	133.492	P	
Battery #21	12.68	12.67	133.696	133.695	P	
Battery #22	12.53	12.53	133.620	133.620	P	

Supplementary information:

- No fire or explosion
- No rupture
- No leakage
- No venting

7.3.9					TABLE: Forced internal short circuit (cells)	N/A
Sample no.	Chamber ambient T (°C)	OCV before test (Vdc)	Particle location ¹⁾	Maximum applied pressure (N)	Results	
Samples charged at charging temperature upper limit (45°C)						
Samples charged at charging temperature lower limit (-5°C)						

Supplementary information:

¹⁾Identify one of the following:

- 1: Nickel particle inserted between positive and negative (active material) coated area.
- 2: Nickel particle inserted between positive aluminium foil and negative active material coated area.

- No fire

D.2				TABLE: Internal AC resistance for coin cells	N/A
Sample no.	Ambient T (°C)	Store time (h)	Resistance Rac (Ω)	Results ¹⁾	

Supplementary information:

¹⁾ Coin cells with internal resistance less than or equal to 3 Ω, see test result on corresponding tables

-- End of Report --

Attachment 1



Photo Documentation

Product: Li-ion Battery Pack

Type Designation: 18650



Figure 1 Front view of battery

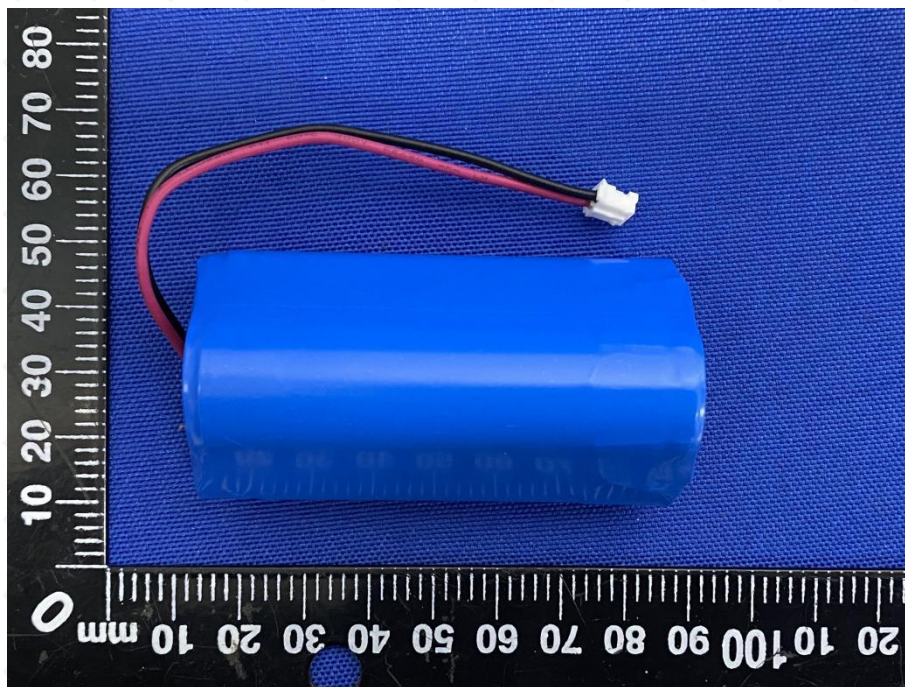


Figure 2 Back view of battery

Attachment 1



Photo Documentation

Product: Li-ion Battery Pack

Type Designation: 18650

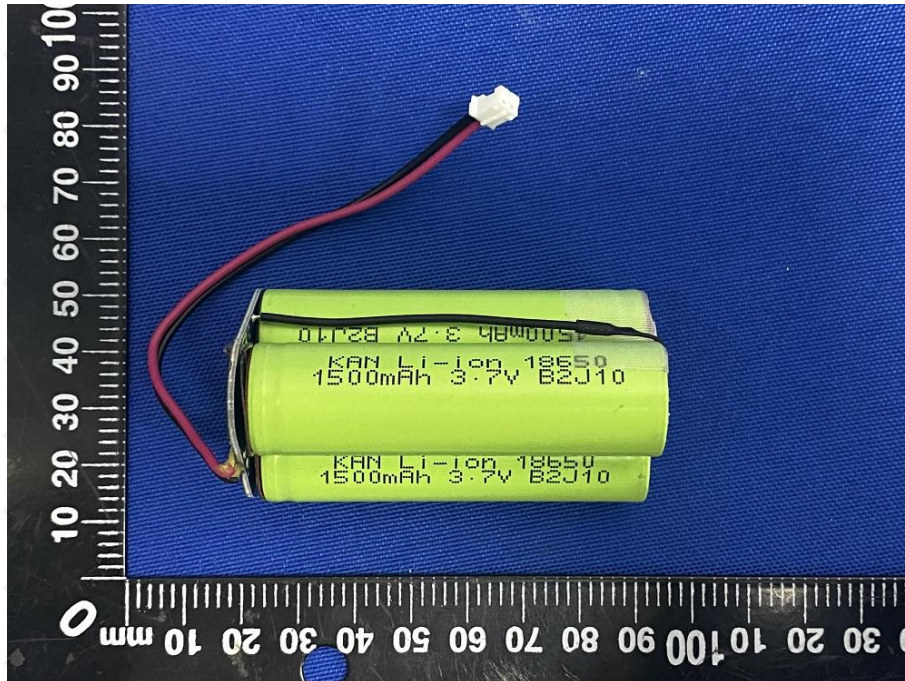


Figure 3 Internal view-1 of battery

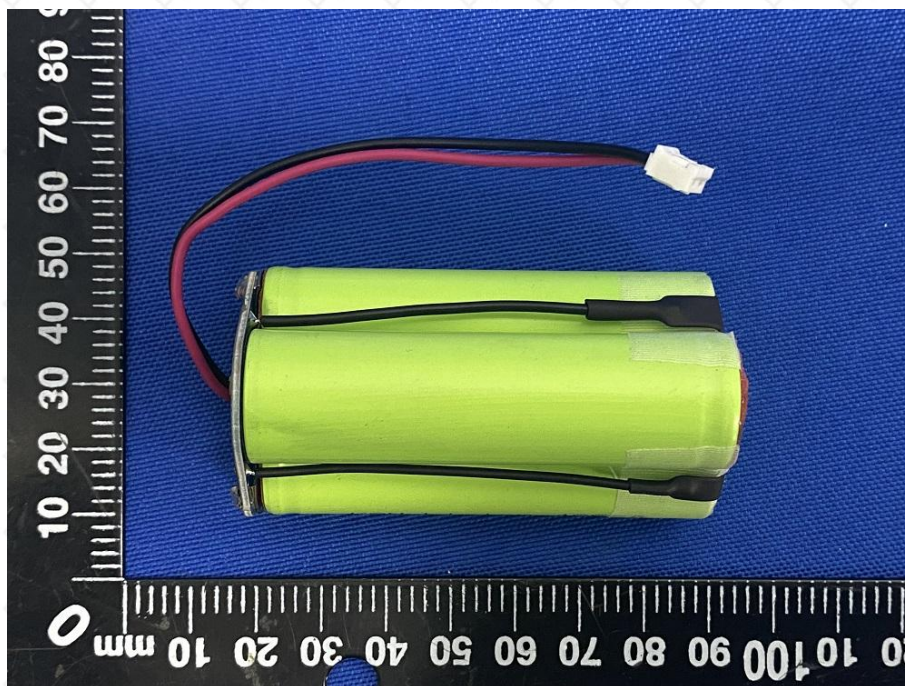


Figure 4 Internal view-2 of battery

Attachment 1



Photo Documentation

Product: Li-ion Battery Pack

Type Designation: 18650



Figure 5 Front view of cell

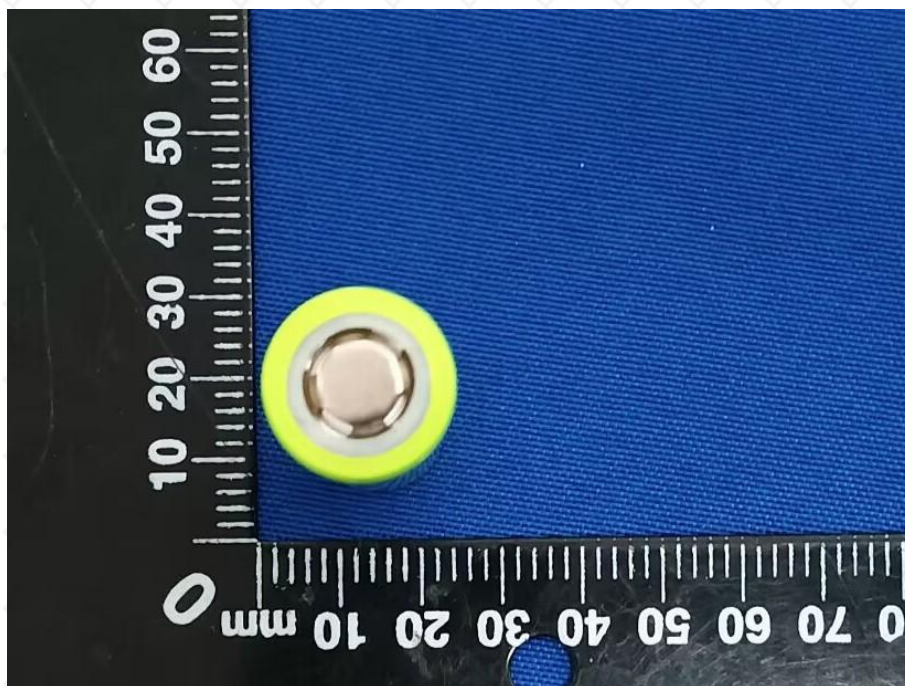


Figure 6 Top view of cell

Attachment 1



Photo Documentation

Product: Li-ion Battery Pack

Type Designation: 18650

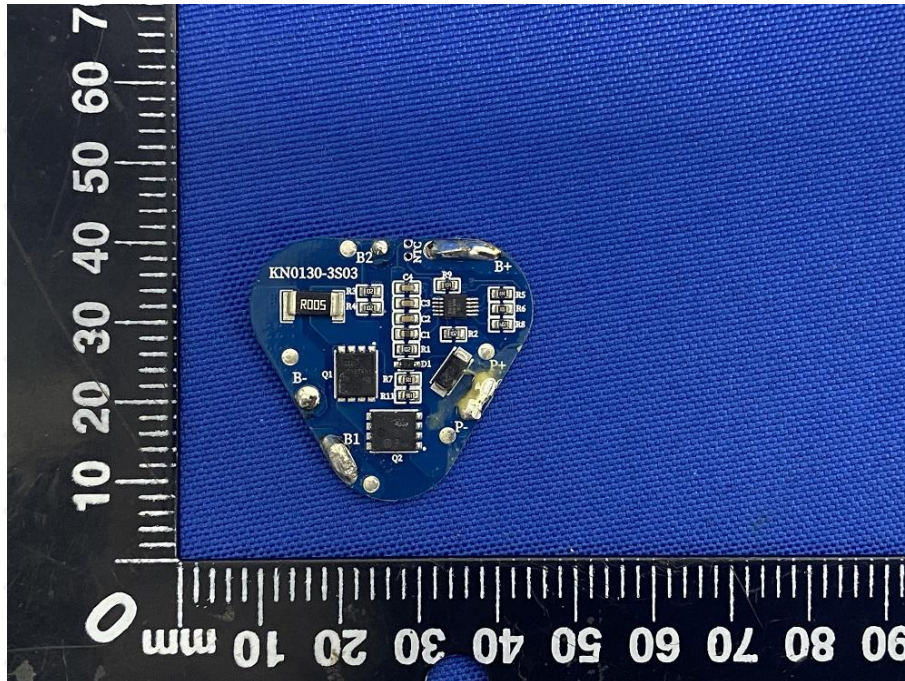


Figure 7 Front view of PCM

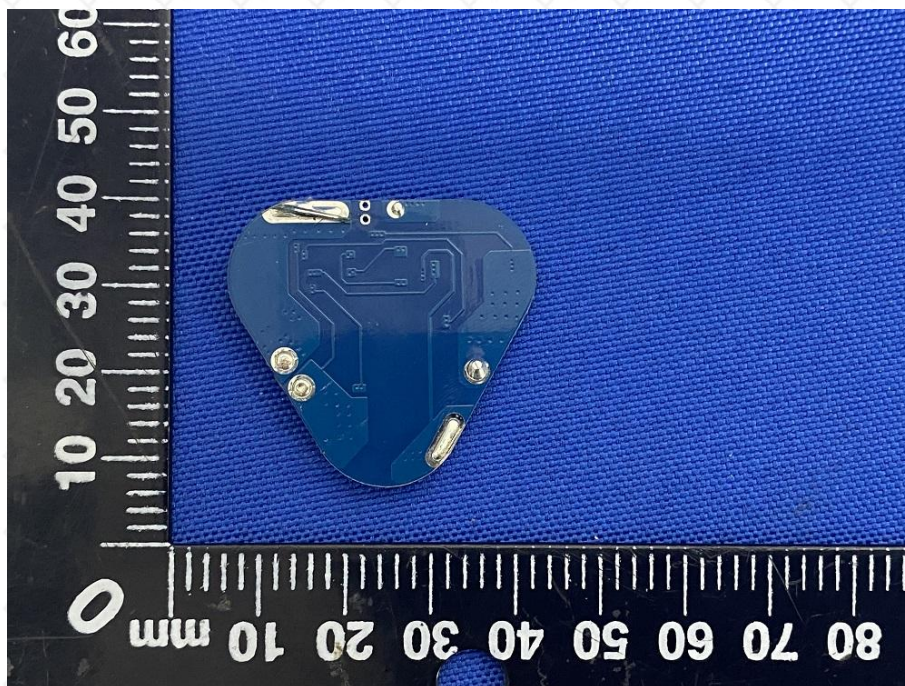


Figure 8 Back view of PCM