

Construction Assessment Report (On-Site)

To : Sotech
Attn : Alain / Michele
Supplier : J. MULCHAND & SONS LTD.
Manufacturer Name :
Manufacturer Location :

Tel : +334 83454732
Fax : --

Order No. : 2021134(81446)&2021156(81447)

Product description: : Hand Blender

Model number : TMS-8365 (SW-108A),
TMS-8366 (SW-108A),
TMS-8360 (SW-108A),



Applicable standards : EN60335-1:2012+A11:2014+A13:2017+A1:2019+A14:2019+
A2:2019

EN60335-2-14:2006+A1:2008+A11:2012+A12:2016

Documents provided : Test report No. EFSH21010925-IE-04-L01 issued by Eurofins
on date 2021-03-25

Samples picked by : DEKRA engineer on : 2021-08-23

Clauses checked : 7,8,16.3, 20-29

Tests performed : Construction check on 5pcs samples

This Document includes : 26 Pages

Date of Construction check : 2021-08-23

Result : PASS

PRODUCT DATA

Rated voltage	:	220-240V~	--
Rated current / power	:	250-300W	--
Rated frequency	:	50Hz	--
Degree of protection	:	IPX0	--
Accessories provided	:	Yes	See pictures
Class	:	II	--
Others	:	Non-detachable flexible cable with plug Type Y attachment	--

RATING LABEL & WARNING LABEL



LIST OF COMPONENTS

Object/part No.	Manufacturer/ trademark	Type/model	Technical data	Mark(s) of conformity	Component Verification
Plug	NB Liansh	LS01	2.5 A, 250 V~	VDE	Pass
Power cord	Ningbo Liansheng	H03VVH2-F	2 x 0.5 mm ²	VDE	Pass
Switch	Not identified	SW	--	Tested with appliance	Pass
X2 Capacitor	Dain	MPX	0,47μF,275V~, X2,40/110/21/C	VDE	Pass
Y2 Capacitor	JEC	JY	Y2, 300V ~, 3300pF	VDE	Pass
Motor	Not identified	HC55	220-240V~, 50Hz, Class 155 Rotor:60.8; 60.9Ω (diagonal) Stator:21.6Ω,21.8Ω Ambient: 30°C	Tested with appliance	Pass
Internal wire	YAUYAO KAIAN	1330	22AWG, 200°C 600V	Tested with appliance+ UL E345435	Pass
Wire connector	Not identified	CE1	--	Tested with appliance	Pass
Remarks: Stator: 20.043Ω, Rotor: 57.053Ω, Ambient: 21°C listed in LVD report: EFSH16040426-IE-08-L01					

RESULTS

CLAUSES	CONTENTS	PASS	FAIL	REMARK	N/A
7	Markings and instructions	X			
8	Protection against access to live parts	X			
16.3	Electric strength	X			
20	Stability and mechanical hazards	X			
21	Mechanical strength	X			
22	Construction	X			
23	Internal wiring	X			
24	Components	X			
25	Supply connection and external flexible cords	X			
26	Terminals for external conductors	X			
27	Provision for earthing	X			
28	Screws and connections	X			
29	Creepage distances, clearances and distances through insulation	X			

(Note: This construction review only refers to a construction analysis without any power on test and limited use of tool and equipments.)

RESULTS DESCRIPTION

Clause

<i>Description of the Remark</i>	<i>Picture of the remark</i>
Nil	

<i>Note: Description of the Remark</i>	<i>Picture of the remark</i>
The sample size was 5pcs but the construction check was performed on the first sample and the rest 4pcs for comparison check against the first sample.	

Please note that every statement made in this report is only valid for the samples tested and reported herein.

Trusting to have informed you sufficiently, we remain,
With best regards

DEKRA Testing and Certification (Shanghai) Ltd. Shenzhen Branch

Engineer name : Allen Ding

Engineer signature : *Allen Ding*

Reviewed by : Peter Xu

Reviewer signature : *Peter Xu*

ANNEX 1

EN 60335-1 and EN 60335-2-14 v1.1

CLAUSES	clauses which are not covered by this construction check
8	Clause 8.1.4
20	1. Clause 20.116 2. Clause 20.117 3. Clause 20.119
21	Clause 21.2 Clause 21.Z101
22	1. clause 22.3 2. clause 22.5 3. clause 22.6, 4. clause 22.7 5 clause 22.16 6. clause 22.18 7. clause 22.32 8. clause 22.40 9. clause 22.42 10. clause 22.47 11. clause 22.48 12. clause 22.103
23	clause 23.3
24	Clause 24.5 Clause 24.6
25	Clause 25.14
27	Clause 27.5

Note:

1. **use simple tools for construction as below: Test probe, impact hammer, torque screw driver, pull and push tester less than 100 N, caliper and hi pot tester**

ANNEX 2

Pictures of Sample

For item TMS-8366



1. Overall view of gift box



2. Gift box view



3. Gift box view



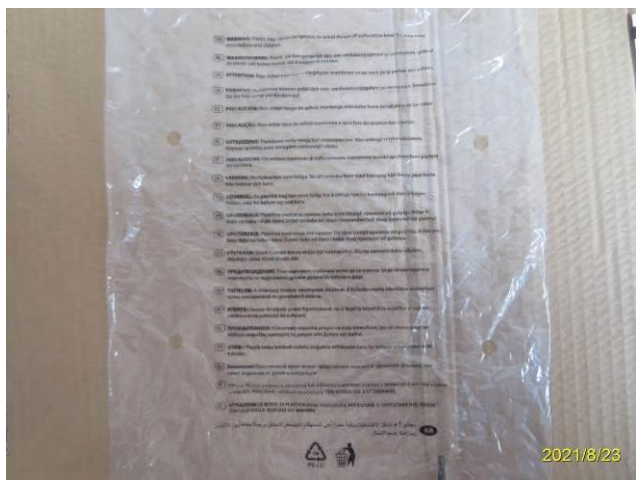
4. Gift box view



5. Open gift box



6. Packing details in gift box



7. Warning on poly-bag



8. Product and accessories



9. Blender head



10. Whisk head



11. Adaptor



12. Adaptor



13. Chopper view



14. Open lid view



15. Blade detached view



16. Marking on bowl



17. Accessories holder



18. Overall view of main part



19. Main part view



20. Main part view



21. Main part view



22. Main part view



23. Main part view



24. Cable inlet



25. Rating mark



26. Logo



27. Switch



28. Plug



29. Power cord



30. Product assembly view-whisk



31. Product assembly view-blender



32. Product assembly view-chopper



33. Storage view



34. Storage view



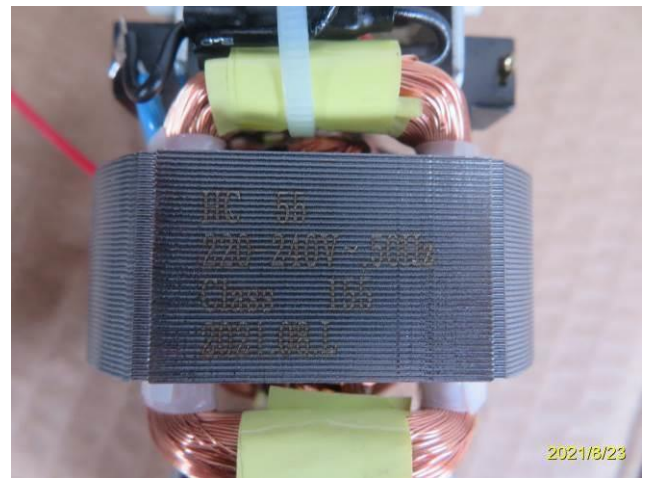
35. Internal view



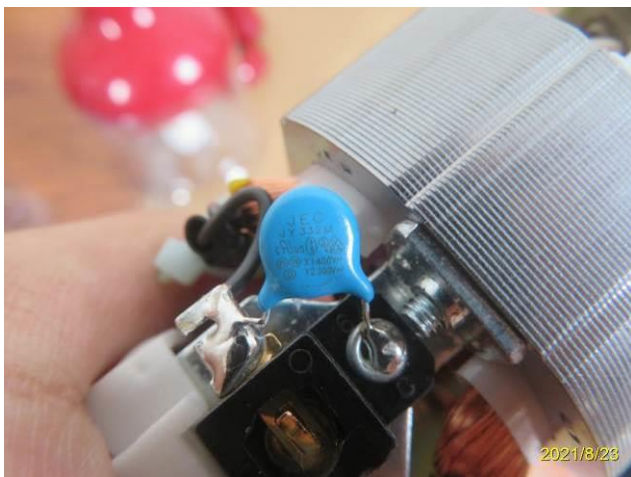
36. Internal view



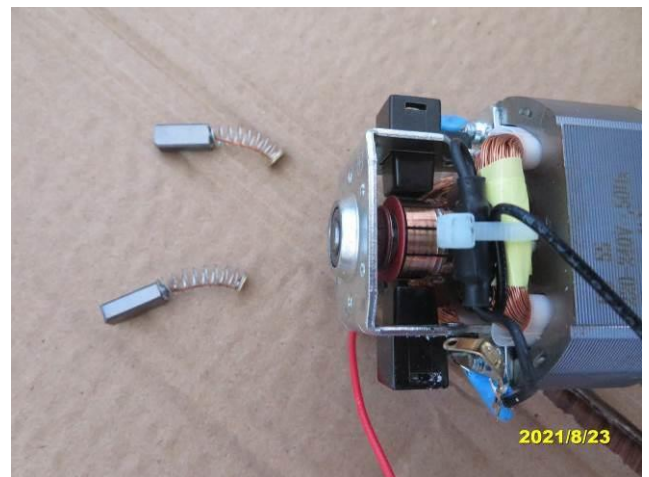
37. Storage view



38. Motor



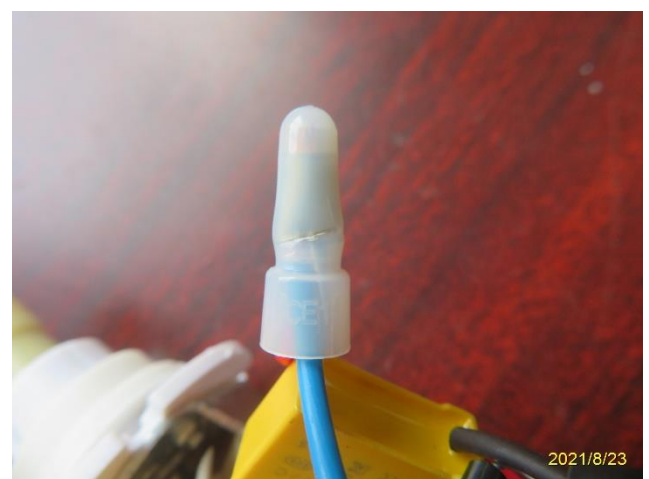
39. Y2 capacitor



40. Carbon brush

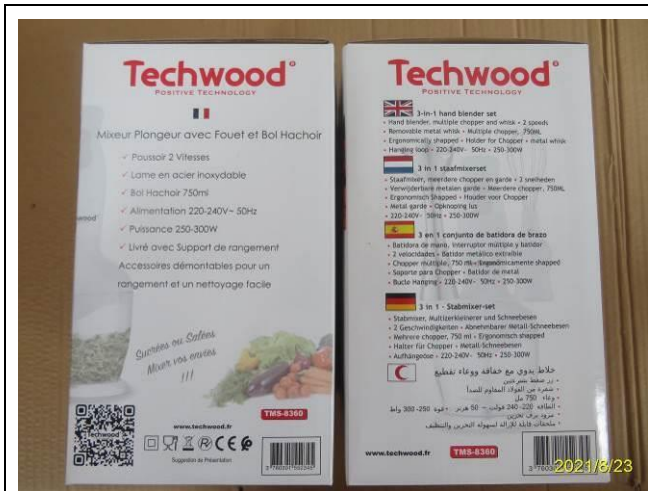


41. X2 capacitor



42. Wire connector

 <p style="text-align: right; color: yellow;">2021/8/23</p>	 <p style="text-align: right; color: yellow;">2021/8/23</p>
<p>43. Wire connector</p>	<p>44. Switch</p>
 <p style="text-align: right; color: yellow;">2021/8/23</p>	
<p>45. Internal wire</p>	<p>46. --</p>
<p>For item TMS-8360</p>	
 <p style="text-align: right; color: yellow;">2021/8/23</p>	 <p style="text-align: right; color: yellow;">2021/8/23</p>
<p>47. Overall view of gift box</p>	<p>48. Gift box view</p>



49. Gift box view



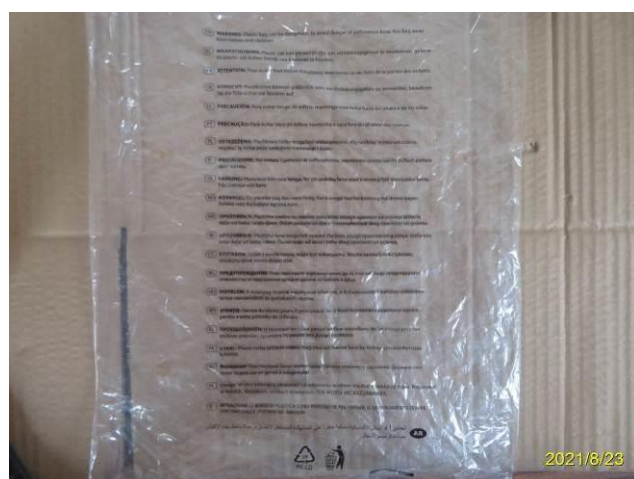
50. Gift box view



51. Open gift box



52. Packing details in gift box



53. Warning on poly-bag



54. Product and accessories



55. Blender head



56. Whisk head



57. Adaptor



58. Chopper view



59. Blade



60. Marking on bowl



61. Accessories holder



62. Overall view of main part



63. Main part view



64.



65. Main part view



66. Main part view



67. Main part view



68. Main part view



69. Cable inlet



70. Rating marking



71. Logo



72. Switch



73. Plug



74. Power cord



75. Product assembly view-whisk



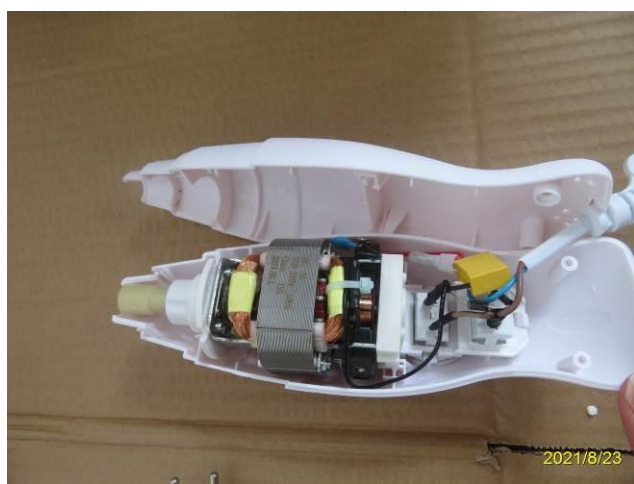
76. Product assembly view-blender



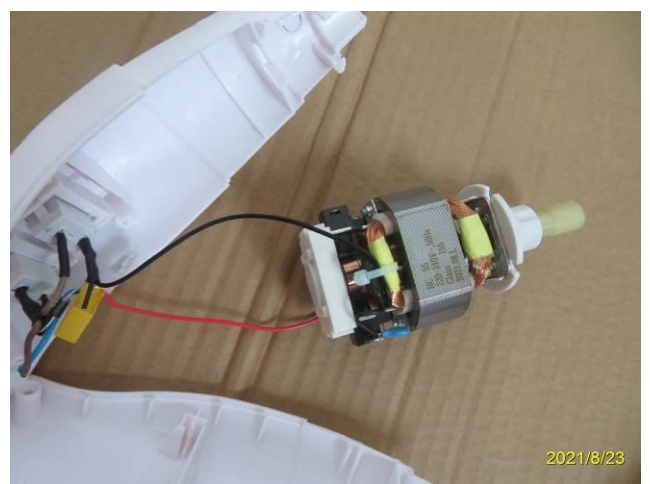
77. Storage view



78. Storage view



79. Internal view



80. Internal view

For item TMS-8365



81. Overall view of gift box



82. Gift box view



83. Gift box view



84. Gift box view



85. Open gift box



86. Packing details in gift box



87. Warning on poly-bag



88. Product with accessories



89. Blender head



90. Whisk head



91. Adaptor



92. Chopper view



93. Marking on bowl



94. Blade



95. Accessories holder



96. Main body view



97. Main body view



98. Main body view



99. Main body view



100. Main body view



101. Main body view



102. Main body view

 <p style="text-align: right; color: yellow; font-size: small;">2021/8/23</p>	 <p style="text-align: right; color: yellow; font-size: small;">2021/8/23</p>
<p>103. Cable inlet</p>	<p>104. Rating marking</p>
 <p style="text-align: right; color: yellow; font-size: small;">2021/8/23</p>	 <p style="text-align: right; color: yellow; font-size: small;">2021/8/23</p>
<p>105. Logo</p>	<p>106. Switch</p>
 <p style="text-align: right; color: yellow; font-size: small;">2021/8/23</p>	 <p style="text-align: right; color: yellow; font-size: small;">2021/8/23</p>
<p>107. Plug</p>	<p>108. Power cord</p>



109. Product assembly view-whisk



110. Product assembly view-blender



111. Product assembly view-chopper



112. Storage view



113. Storage view



114. Internal view



115. Internal view

116. --

--- END OF REPORT---