

Prüfbericht-Nr.: <i>Test report no.:</i>	50136445 011	Auftrags-Nr.: <i>Order no.:</i>	180247224	Seite 1 von 13 <i>Page 1 of 13</i>
Kunden-Referenz-Nr.: <i>Client reference no.:</i>	N/A	Auftragsdatum: <i>Order date:</i>	2022-11-21	
Auftraggeber: <i>Client:</i>				
Prüfgegenstand: <i>Test item:</i>	Hair Dryer			
Bezeichnung / Typ-Nr.: <i>Identification / Type no.:</i>	See page 3			
Auftrags-Inhalt: <i>Order content:</i>	Type test			
Prüfgrundlage: <i>Test specification:</i>	EN 60335-1:2012+A11+A13+A14+A1+A2+A15 EN 60335-2-23:2003+A1+A11+A2 EN 62233:2008 AfPS GS 2019:01 PAK EK1 527-12 Rev. 2 AfPS GS 2019:04			
Wareneingangsdatum: <i>Date of sample receipt:</i>	2023-03-20			
Prüfmuster-Nr.: <i>Test sample no.:</i>	A003437667			
Prüfzeitraum: <i>Testing period:</i>	2023-04-05 - 2023-04-06			
Ort der Prüfung: <i>Place of testing:</i>	TÜV Rheinland /CCIC (Ningbo) Co., Ltd.			
Prüflaboratorium: <i>Testing laboratory:</i>	TÜV Rheinland /CCIC (Ningbo) Co., Ltd.			
Prüfergebnis*: <i>Test result*:</i>	Pass			
geprüft von: <i>tested by:</i> Clack Gu Trainee: Yancey He		genehmigt von: <i>authorized by:</i> William Gui		
Datum: <i>Date:</i> 2023-04-06		Ausstellungsdatum: <i>Issue date:</i> 2023-04-06		
Stellung / Position:	TUV PE	Stellung / Position:	TUV Reviewer	
Sonstiges / <i>Other:</i>	The bending construction of BY-573 and BY-573D was optimized. Attachment 1: Construction check report(total 5 pages) Attachment 2: Photo document(total 5 pages)			
Zustand des Prüfgegenstandes bei Anlieferung: <i>Condition of the test item at delivery:</i>	Prüfmuster vollständig und unbeschädigt <i>Test item complete and undamaged</i>			
* Legende:	P(ass) = entspricht o.g. Prüfgrundlage(n)	F(ail) = entspricht nicht o.g. Prüfgrundlage(n)	N/A = nicht anwendbar	N/T = nicht getestet
* Legend:	P(ass) = passed a.m. test specification(s)	F(ail) = failed a.m. test specification(s)	N/A = not applicable	N/T = not tested
Dieser Prüfbericht bezieht sich nur auf das o.g. Prüfmuster und darf ohne Genehmigung der Prüfstelle nicht auszugsweise vervielfältigt werden. Dieser Bericht berechtigt nicht zur Verwendung eines Prüfzeichens. <i>This test report only relates to the above mentioned test sample. Without permission of the test center this test report is not permitted to be duplicated in extracts. This test report does not entitle to carry any test mark.</i>				

TEST REPORT IEC 60335-2-23 Part 1: Safety of household and similar electrical appliances Part 2: Particular requirements for appliances for skin or hair care	
Report Number	See cover page
Date of issue	See cover page
Total number of pages	See cover page
Name of Testing Laboratory preparing the Report	TÜV Rheinland /CCIC (Ningbo) Co., Ltd.
Applicant's name	
Address	
Test specification:	
Standard	IEC 60335-2-23:2003 (Fifth Edition) incl. Corr.2:2008 + A1:2008 + A2:2012 in conjunction with IEC 60335-1:2010 (Fifth Edition) incl. Corr. 1:2010 and Corr. 2:2011 + A1:2013
Test procedure	GS Mark
Non-standard test method	N/A
Test Report Form No.	IEC60335_2_23H
Test Report Form(s) Originator	VDE Testing and Certification Institute
Master TRF	Dated 2015-06
Copyright © 2015 IEC System of Conformity Assessment Schemes for Electrotechnical Equipment and Components (IECEE System). All rights reserved. This publication may be reproduced in whole or in part for non-commercial purposes as long as the IECEE is acknowledged as copyright owner and source of the material. IECEE takes no responsibility for and will not assume liability for damages resulting from the reader's interpretation of the reproduced material due to its placement and context. If this Test Report Form is used by non-IECEE members, the IECEE/IEC logo and the reference to the CB Scheme procedure shall be removed. This report is not valid as a CB Test Report unless signed by an approved CB Testing Laboratory and appended to a CB Test Certificate issued by an NCB in accordance with IECEE 02.	
General disclaimer:	
The test results presented in this report relate only to the object tested. This report shall not be reproduced, except in full, without the written approval of the Issuing CB Testing Laboratory. The authenticity of this Test Report and its contents can be verified by contacting the NCB, responsible for this Test Report.	

Test item description	Hair Dryer
Trade Mark	N/A
Manufacturer	
Model/Type reference	<p>BY-568, BY-568I, BY-571, BY-571I, BY-572, BY-572A, BY-572D, BY-572G, BY-573, BY-573D, BY-576, BY-576I, BY-578, BY-5906, BY-5906I, BY-5908, BY-5908I, BY-5908G, BY-5908D, BY-5909,</p> <p>BY-5909I, BY-5910, BY-5910I, BY-5916, BY-5916I, BY-5916A, BY-5916B, BY-5910A, BY-5910B, BY-5915, BY-5915I, BY-5905, BY-5905I, BY-5917, BY-5917I, BY-5920, BY-5920I</p> <p>AC 220-240V, 50-60Hz, 1800-2200W for BY-568, BY-568I, BY-576, BY-576I, BY-5920, BY-5920I;</p> <p>AC 220-240V, 50-60Hz, 2000W for BY-571, BY-571I, BY-578, BY-5909, BY-5909I;</p> <p>AC 220-240V, 50-60Hz, 1700-2000W for BY-5906, BY-5906I, BY-5915, BY-5915I, BY-5917, BY-5917I;</p> <p>AC 220-240V, 50-60Hz, 1800W for BY-5910, BY-5910I, BY-5910A, BY-5910B, BY-5916, BY-5916I, BY-5916A, BY-5916B;</p> <p>AC 220-240V, 50-60Hz, 1400W for BY-5905, BY-5905I;</p> <p>AC 220-240V, 50-60Hz, 1000W for BY-572, BY-572A;</p> <p>AC 120/230V, 50-60Hz, 1000W for BY-572D, BY-572G;</p> <p>AC 220-240V, 50-60Hz, 1100-1300W for BY-573;</p> <p>AC 120/230V, 50-60Hz, 1200W for BY-573D;</p> <p>AC 220-240V, 50-60Hz, 750W for BY-5908, BY-5908I;</p>
Ratings	

Class II

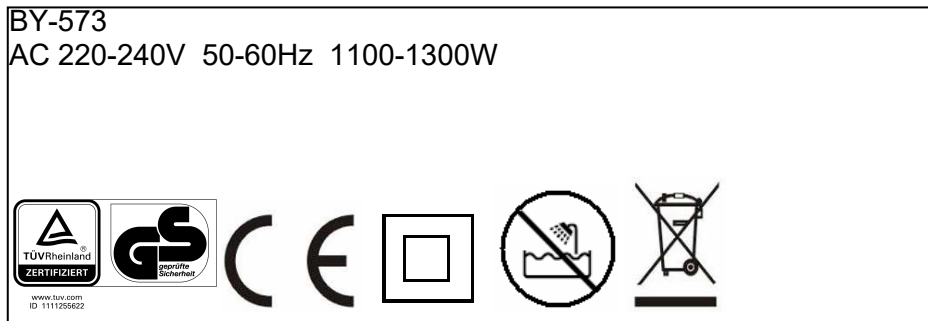
Responsible Testing Laboratory (as applicable), testing procedure and testing location(s):		
<input checked="" type="checkbox"/>	Testing Laboratory:	TÜV Rheinland /CCIC (Ningbo) Co., Ltd.
	Testing location/ address	3F,Building C13, R&D Park, No.32 Lane 299 Guanghua Road, National Hi-Tech Zone, Ningbo 315048 China
<input type="checkbox"/>	Associated CB Testing Laboratory:	
	Testing location/ address	
	Tested by (name, function, signature)	See cover page
	Approved by (name, function, signature) ..	See cover page
<hr/>		
<input type="checkbox"/>	Testing procedure: CTF Stage 1:	
	Testing location/ address	
	Tested by (name, function, signature)	
	Approved by (name, function, signature) ..	
<hr/>		
<input type="checkbox"/>	Testing procedure: CTF Stage 2:	
	Testing location/ address	
	Tested by (name + signature).....	
	Witnessed by (name, function, signature) . :	
	Approved by (name, function, signature) .. :	
<hr/>		
<input type="checkbox"/>	Testing procedure: CTF Stage 3:	
<input type="checkbox"/>	Testing procedure: CTF Stage 4:	
	Testing location/ address	
	Tested by (name, function, signature)	
	Witnessed by (name, function, signature) . :	
	Approved by (name, function, signature) .. :	
	Supervised by (name, function, signature) :	

<p>List of Attachments (including a total number of pages in each attachment): See cover page</p>	
<p>Summary of testing: Visual construction check was conducted for BY-573 and BY-573D. Reasonable foreseeable use is covered by the standard and related EK decision applied. Harmonised standards EN 62233:2008 was considered to evaluate the exposure of human to electromagnetic fields during the GS-mark awarding. EK1 598-14, AfPS GS 2019:04 Haartrockner were considered.</p>	
<p>Tests performed (name of test and test clause): Test of clause 8, 20, 23.3, 24 were performed on model BY-573 and BY-573D.</p>	<p>Testing location: TÜV Rheinland /CCIC (Ningbo) Co., Ltd. 3F,Building C13, R&D Park, No.32 Lane 299 Guanghua Road, National Hi-Tech Zone, Ningbo 315048 China</p>
<p>Summary of compliance with National Differences (List of countries addressed): DE(DE=Germany) EU Group Differences <input checked="" type="checkbox"/> The product fulfils the requirements of <u>EN 60335-1:2012+A11+A13+A1+A14+A2+A15</u>, <u>EN 60335-2-23:2003+A1+A11+A2</u>, <u>EN 62233:2008</u>, AfPS GS 2019:01 PAK, EK1 527-12 Rev. 2, AfPS GS 2019:04.</p>	

Copy of marking plate:

The artwork below may be only a draft.

Representative marking plate:



Remark:

For other models are same as above model BY-573 except type designation and power input.

Manufacture or/and his importer shall ensure product bears label requirements in article 6 and article 8 of the 2014/35/EU relate to name, batch number, post address prior place the product into EU market.

The following warning label was fitted to the power cord for Appliance with GS mark



Test item particulars :	
Classification of installation and use : Hand-held appliance	
Supply Connection : Type Y attachment with a plug	
..... :	
Possible test case verdicts:	
- test case does not apply to the test object : N/A	
- test object does meet the requirement : P (Pass)	
- test object does not meet the requirement : F (Fail)	
Testing :	
Date of receipt of test item : See cover page	
Date (s) of performance of tests : See cover page	
General remarks:	
"(See Enclosure #)" refers to additional information appended to the report. "(See appended table)" refers to a table appended to the report.	
Throughout this report a <input checked="" type="checkbox"/> comma / <input type="checkbox"/> point is used as the decimal separator.	
Manufacturer's Declaration per sub-clause 4.2.5 of IEC 60335-1:	
The application for obtaining a CB Test Certificate includes more than one factory location and a declaration from the Manufacturer stating that the sample(s) submitted for evaluation is (are) representative of the products from each factory has been provided	<input type="checkbox"/> Yes <input checked="" type="checkbox"/> Not applicable
When differences exist; they shall be identified in the General product information section.	
Name and address of factory (ies) : Same as applicant	

General product information:

These appliances are hand-held and for household use only.

Type BY-568 and BY-568I are similar except BY-568I have Negative Ion.

Type BY-576 and BY-576I are similar except BY-576I have Negative Ion.

Type BY-571 and BY-571I are similar except BY-571I have Negative Ion.

According to the construction of models, these products are divided into six categories: BY-568 Series, BY-576 Series, BY-571 Series, BY-572 Series, BY-573 Series, BY-578.

BY-568 Series including models BY-568, BY-568I.

BY-576 Series including models BY-576, BY-576I.

BY-571 Series including models BY-571, BY-571I.

BY-572 Series including models BY-572, BY-572A, BY-572D, BY-572G.

BY-573 Series including models BY-573, BY-573D.

The following table show difference between models

Model	Main voltage selector switch	Motor (voltage/model)	Heating element	Indicator light
BY-568 series	No	AC 220-240V/HC5415	220-240V~, 1800-2200W	No
BY-578	No	AC 220-240V/HC5415	220-240V~, 2000W	No
BY-576 Series	No	DC 36V/KRC-385	220-240V~, 1800-2200W	No
BY-571 Series	No	DC 36V/KRC-385	220-240V~, 2000W	No
BY-573	No	DC 18V/ KRC-365	220-240V~, 1100-1300W	No
BY-573D	Yes	DC 18V/ KRC-365	120/230V~, 1200W	No
BY-572	No	DC 24V/ KRC-365	220-240V~, 1000W	Yes
BY-572A	No	DC 24V/ KRC-365	220-240V~, 1000W	No
BY-572D	Yes	DC 24V/ KRC-365	120/230V~, 1000W	Yes
BY-572G	Yes	DC 24V/ KRC-365	120/230V~, 1000W	No

Amendment 001 test report

Add alternative components (power cord, power plug, thermal cut-out, X2 capacitor, power switch, slide switch, voltage selector switch), details see table 24.1.

CDF has been modified.

Amendment 002 test report

Co-license issued.

Amendment 003 test report

Standard update, standard update from EN 60335-2-23:2003 + A1 + A11+A2, EN 60335-1:2012+A11+A13, EN 62233:2008, AfPS GS 2019:01 PAK to EN 60335-2-23:2003 + A1 + A11+A2, EN 60335-1:2012+A11+A13+A14+A2, EN 62233:2008, AfPS GS 2019:01 PAK.

Add models BY-5908, BY-5908I, BY-5908G, BY-5908D, BY-5909, BY-5909I, BY-5910, BY-5910I, BY-5916 and BY-5916I.

The following table show difference between models

Model	Voltage selector switch	Motor (voltage/model)	Heating element	Negative Ions
BY-5908	No	DC 24V/KRC-280	220-240V~, 750W	No
BY-5908I	No	DC 24V/KRC-280	220-240V~, 750W	Yes
BY-5908G	Yes	DC 24V/KRC-280	120V/230~, 750W	No
BY-5908D	Yes	DC 24V/KRC-280	120V/230~, 750W	Yes
BY-5909	No	DC 26V/ KRC-365	220-240V~, 2000W	No
BY-5909I	No	DC 26V/ KRC-365	220-240V~, 2000W	Yes
BY-5910	No	DC 26V/ KRC-365	220-240V~, 1800W	No
BY-5910I	No	DC 26V/ KRC-365	220-240V~, 1800W	Yes
BY-5916	No	DC 36V/ KRC-385	220-240V~, 1800W	No
BY-5916I	No	DC 36V/ KRC-385	220-240V~, 1800W	Yes

Amendment 004 test report

Add new models BY-5906I and BY-5906.

Models BY-5906I and BY-5906 are similar except type designation and Anion Generator.

Model BY-5906I have an Anion Generator.

Amendment 005 test report

Add new models BY-5910A, BY-5910B, BY-5916A, BY-5916B

BY-5910A is same as BY-5910 except for the motor speed switch

BY-5910B is same as BY-5910I except for the motor speed switch

BY-5916A is same as BY-5916 except for the motor speed switch

BY-5916B is same as BY-5916I except for the motor speed switch

Amendment 006 test report

Missing type BY-576, BY-576I in CE COC AN 50487903 001, issue new CE COC certificates.

Amendment 007 test report

Add new models BY-5917, BY-5917I, BY-5915, BY-5915I, BY-5905, BY-5905I.

The following table show difference between models

Model	Voltage selector switch	Motor (voltage/model)	Heating element	Negative Ions
BY-5917	No	KRC-385	220-240V~, 1700-2000W	No
BY-5917I	No	KRC-385	220-240V~, 1700-2000W	Yes
BY-5915	No	DB0-310-29A-82-11	220-240V~, 1700-2000W	No
BY-5915I	No	DB0-310-29A-82-11	220-240V~, 1700-2000W	Yes
BY-5905	No	LS2821	220-240V~, 1400W	No
BY-5905I	No	LS2821	220-240V~, 1400W	Yes

Amendment 008 test report

1. Add new models BY-5920I and BY-5920.
 BY-5920I is same as BY-576I except for the appearance.
 BY-5920 is same as BY-576 except for the appearance.
 Models BY-5920I and BY-5920 are similar except type designation and Anion Generator.
 See following table for details.

Model	Voltage selector switch	Motor (voltage/model)	Heating element	Negative Ions
BY-5920I	No	KRC-385 36V	220-240V~, 1800-2200W	Yes
BY-5920	No	KRC-385 36V	220-240V~, 1800-2200W	No

- 2. Add alternative thermal cut-out for model BY-5906, BY-5906I, BY-5915, BY-5915I, BY-5905, BY-5905I.
- 3. Position of NTC for model BY-5915, BY-5915I, BY-5906, BY-5906I changed. After checking and comparing, the NTC will not take effect in normal operation. See photo document for details.
- 4. Standards update from EN 60335-1:2012+A11+A13+A14+A1+A2 to EN 60335-1:2012+A11+A13+A14+A1+A2+A15.
- 5. New connection way for motor is added, which shares the same function and diagram circuit with original one, see photo document for details.

Amendment 009 test report:

- 1. Add missing data for model BY-5917i in cl.19.2
- 2. CDF is revised, see bold font in CDF.
- 3. Corrected the verdict in Cl.11.3 and Cl.19 in 50136445 008

Amendment 010 test report:


- 1. Change the applicant's, manufacturer's and factory's address from KanXi Industrial Zone, KanDun Street, Cixi, Ningbo, Zhejiang 315325 P.R. China to No. 298 Ankang Road, Industrial Park, Kandun Street, Cixi, Ningbo 315303 Zhejiang P.R. China.
 Address change has been completed in the original certificate S 50577868 0001-0002 which corresponding report 50136445 009.
- 2. CDF was revised. Details refer to bold parts for CDF.
- 3. The bending construction of model BY-573 and BY-573D was optimized. Details refer to photo document.

IEC 60335-2-23			
Clause	Requirement + Test	Result - Remark	Verdict
8	PROTECTION AGAINST ACCESS TO LIVE PARTS		P
8.1	Adequate protection against accidental contact with live parts		P
8.1.1	Requirement applies for all positions, detachable parts removed		P
	Lamps behind a detachable cover not removed, if conditions met		N/A
	Insertion or removal of lamps, protection against contact with live parts of the lamp cap		N/A
	Use of test probe B of IEC 61032, with a force not exceeding 1 N: no contact with live parts		P
8.1.2	Use of test probe 13 of IEC 61032, with a force not exceeding 1 N, through openings in class 0 appliances and class II appliances/constructions: no contact with live parts		P
	Test probe 13 also applied through openings in earthed metal enclosures having a non-conductive coating: no contact with live parts		N/A
8.1.4	Accessible part not considered live if:		N/A
	- safety extra-low a.c. voltage: peak value not exceeding 42;4 V		N/A
	- safety extra-low d.c. voltage: not exceeding 42;4 V		N/A
	- or separated from live parts by protective impedance		N/A
	If protective impedance: d.c. current not exceeding 2 mA, and		N/A
	a.c. peak value not exceeding 0;7 mA		N/A
	- for peak values over 42;4 V up to and including 450 V, capacitance not exceeding 0,1 µF		N/A
	- for peak values over 450 V up to and including 15 kV, discharge not exceeding 45 µC		N/A
	- for peak values over 15 kV, the energy in the discharge not exceeding 350 mJ		N/A
8.1.5	Live parts protected at least by basic insulation before installation or assembly:		N/A
	- built-in appliances		N/A
	- fixed appliances		N/A
	- appliances delivered in separate units		N/A
8.2	Class II appliances and constructions constructed so that there is adequate protection against accidental contact with basic insulation and metal parts separated from live parts by basic insulation only		P
	Only possible to touch parts separated from live parts by double or reinforced insulation		P

20	STABILITY AND MECHANICAL HAZARDS		P
20.1	Appliances having adequate stability	Hand-held appliance	N/A
	Tilting test through an angle of 10°, appliance placed on an inclined plane/horizontal support, not connected to the supply mains; appliance does not overturn		N/A
	Tilting test repeated on appliances with heating elements, angle of inclination increased to 15°		N/A
	Possible heating test in overturned position; temperature rise does not exceed values shown in table 9		N/A
20.2	Moving parts adequately arranged or enclosed as to provide protection against personal injury		P
	Protective enclosures, guards and similar parts are non-detachable, and		P
	have adequate mechanical strength		P
	Enclosures that can be opened by overriding an interlock are considered to be detachable parts		N/A
	Self-resetting thermal cut-outs and overcurrent protective devices not causing a hazard by unexpected closure		P
	Not possible to touch dangerous moving parts with the test probe described		P
23	INTERNAL WIRING		P
23.3	Electrical connections and internal conductors movable relatively to each other not exposed to undue stress	For models BY-573, BY-573D	P
	Flexible metallic tubes not causing damage to insulation of conductors		N/A
	Open-coil springs not used		P
	Adequate insulating lining provided inside a coiled spring, the turns of which touch one another		P
	No damage after 10 000 flexings for conductors flexed during normal use, or		N/A
	100 flexings for conductors flexed during user maintenance		N/A
	Number of flexings for conductors that only flexed when appliance stored is 5000 (IEC 60335-2-23)		P
	Electric strength test of 16.3, 1000 V between live parts and accessible metal parts		P
	Not more than 10 % of the strands of any conductor broken, and		P
	not more than 30 % for wiring supplying circuits that consume no more than 15 W		N/A
24	COMPONENTS		P
24.1	Components comply with safety requirements in relevant IEC standards		P
	List of components	(see appended table)	P

24.1	TABLE: Critical components information refer to CDF					P
Object / part No.	Manufacturer/ trademark	Type / model	Technical data	Standard	Mark(s) of conformity ¹⁾	
<p>1) For the mark of conformity with *, it means the components also tested with appliance accordingly</p> <p>2) Components license available upon request.</p>						

<End of Test Report>

Prüfbericht-Nr.: Test report no.:	Attachment 1 of 50136445 011	Auftrags-Nr.: Order no.:	180247224	Seite 1 von 5 Page 1 of 5
Kunden-Referenz-Nr.: Client reference no.:	N/A	Auftragsdatum: Order date:	2022-11-21	
Auftraggeber: Client:				
Prüfgegenstand: Test item:	Hair Dryer			
Bezeichnung / Typ-Nr.: Identification / Type no.:	See page 3			
Auftrags-Inhalt: Order content:	Type examination			
Prüfgrundlage: Test specification:	2 PfG 2516:2014-11 Checkliste für die Warenkontrollprüfung Checklist for the Product Control Test			
Wareneingangsdatum: Date of sample receipt:	2023-03-20			
Prüfmuster-Nr.: Test sample no.:	A003437667			
Prüfzeitraum: Testing period:	2023-04-05 to 2023-04-06			
Ort der Prüfung: Place of testing:	TÜV Rheinland /CCIC (Ningbo) Co., Ltd.			
Prüflaboratorium: Testing laboratory:	TÜV Rheinland /CCIC (Ningbo) Co., Ltd.			
Prüfergebnis*: Test result*:	Pass			
geprüft von: tested by: Clack Gu Trainee: Yancey He		genehmigt von: authorized by: William Gui		
Datum: Date: 2023-04-06		Ausstellungsdatum: Issue date: 2023-04-06		
Stellung / Position:	TUV PE	Stellung / Position:	TUV Reviewer	
Sonstiges / Other:				
Zustand des Prüfgegenstandes bei Anlieferung: Condition of the test item at delivery:	Prüfmuster vollständig und unbeschädigt Test item complete and undamaged			
* Legende: P(ass) = entspricht o.g. Prüfgrundlage(n) F(ail) = entspricht nicht o.g. Prüfgrundlage(n) N/A = nicht anwendbar N/T = nicht getestet				
* Legend: P(ass) = passed a.m. test specification(s) F(ail) = failed a.m. test specification(s) N/A = not applicable N/T = not tested				
<p>Dieser Prüfbericht bezieht sich nur auf das o.g. Prüfmuster und darf ohne Genehmigung der Prüfstelle nicht auszugsweise vervielfältigt werden. Dieser Bericht berechtigt nicht zur Verwendung eines Prüfzeichens. This test report only relates to the a. m. test sample. Without permission of the test center this test report is not permitted to be duplicated in extracts. This test report does not entitle to carry any test mark.</p>				

V05

Prüfbericht-Nr.: Attachment 1 of 50136445 011 Test Report No.:			
Absatz	2 PfG 2516:2014-11	Messergebnisse - Bemerkungen	Bewertung
Clause	Anforderungen - Prüfungen / Requirements - Tests	Measuring results - Remarks	Evaluation
1	Produkt Product		
	Äußere Erscheinung des Musters stimmt mit der Fotodokumentation überein. <i>Outer appearance of the drawn sample is same as in photo documentation.</i>	Same	P <input checked="" type="checkbox"/> F <input type="checkbox"/> N/A <input type="checkbox"/> N/T <input type="checkbox"/>
	Interner Aufbau stimmt mit der Fotodokumentation überein. <i>Internal construction of the drawn sample is same as in photo documentation.</i>		P <input checked="" type="checkbox"/> F <input type="checkbox"/> N/A <input type="checkbox"/> N/T <input type="checkbox"/>
	Es wurden nur sicherheitsrelevanten Komponenten verbaut, die CDF oder Prüfbericht benannt sind. <i>Only safety relevant components as described in CDF or Test Report have been used in the drawn sample.</i>		P <input checked="" type="checkbox"/> F <input type="checkbox"/> N/A <input type="checkbox"/> N/T <input type="checkbox"/>
2	Typenschild Label		
	Das Typenschild entspricht dem zertifizierten. <i>The label is same as the certified one.</i>	Same as certified one	P <input checked="" type="checkbox"/> F <input type="checkbox"/> N/A <input type="checkbox"/> N/T <input type="checkbox"/>
	Der Ausweisinhaber, Importeur oder Bevollmächtigte ist auf dem Typenschild benannt. <i>The license holder, importer or authorized representative is displayed in the label.</i>		P <input checked="" type="checkbox"/> F <input type="checkbox"/> N/A <input type="checkbox"/> N/T <input type="checkbox"/>
	Die Adresse (bei GS zwingend eine aus dem EWR) ist auf dem Typenschild benannt. <i>Complete postal address (for GS it must be a European address) is mentioned in the label.</i>		P <input checked="" type="checkbox"/> F <input type="checkbox"/> N/A <input type="checkbox"/> N/T <input type="checkbox"/>
	Bei Fail: in Bedienungsanleitung angegeben <i>If fail: in the user manual</i>		
	Bei Fail: auf der Verpackung angegeben <i>if fail: on packaging</i>		
	Wenn eine CE Markierung notwendig ist, wurde diese auf dem Typenschild in dem richtigen Layout abgebildet. <i>If CE marking is mandatory, it's on the product and apparently complies with the design restrictions.</i>		P <input checked="" type="checkbox"/> F <input type="checkbox"/> N/A <input type="checkbox"/> N/T <input type="checkbox"/>
	Wenn ein TÜV Rheinland Zeichen abgebildet ist, entspricht dies den Vorgaben. <i>In event a TUV Mark is displayed it complies with the design restrictions.</i>		P <input checked="" type="checkbox"/> F <input type="checkbox"/> N/A <input type="checkbox"/> N/T <input type="checkbox"/>

Prüfbericht-Nr.: Attachment 1 of 50136445 011 Seite 4 von 5
Test Report No.: Page 4 of 5

Absatz	2 PfG 2516:2014-11	Messergebnisse - Bemerkungen	Bewertung
Clause	Anforderungen - Prüfungen / Requirements - Tests	Measuring results - Remarks	Evaluation

3	Bedienungs-, Installations-, Aufbauanleitung User Manual, Installation - / Assembly Manual		
	Liegt in der richtigen Sprache vor, bei GS zwingend in deutscher Sprache, und entspricht dem zertifizierten. <i>Is available in the correct language (German version a must for GS) and the same as certified one.</i>	Same as certified one	P <input checked="" type="checkbox"/> F <input type="checkbox"/> N/A <input type="checkbox"/> N/T <input type="checkbox"/>
	Wenn ein TÜV Rheinland Zeichen abgebildet ist, entspricht dies den Vorgaben. <i>In event a TUV Mark is displayed it complies with the design restrictions.</i>		P <input checked="" type="checkbox"/> F <input type="checkbox"/> N/A <input type="checkbox"/> N/T <input type="checkbox"/>
	Wenn eine Herstelleradresse angegeben ist, wurde diese komplett (bei GS zwingend eine Adresse im EWR) angegeben und stimmt mit der vom Typen-schild überein. <i>If the license holder and/or importer, authorized representative is displayed with address, it's complete (for GS it must be a European address) and correlates with the information on the rating label.</i>		P <input checked="" type="checkbox"/> F <input type="checkbox"/> N/A <input type="checkbox"/> N/T <input type="checkbox"/>
	Wenn die Serviceadresse von der vom Hersteller, Importeur oder Bevollmächtigten abweicht, ist das akzeptabel. <i>If the address for service inquiries differs from manufacturer's, importer's or authorized representative's, it's acceptable.</i>		
4	Verpackung Packaging/Gift box		
	Wenn ein TÜV Rheinland Zeichen abgebildet ist, entspricht dies den Vorgaben. <i>In event a TUV Mark is displayed it complies with the design restrictions.</i>	Packaging not provided	P <input type="checkbox"/> F <input type="checkbox"/> N/A <input checked="" type="checkbox"/> N/T <input type="checkbox"/>
	Der Ausweisinhaber, Importeur und/oder Bevollmächtigte ist mit auf der Verpackung benannt. <i>The license holder, importer and/or authorized representative are displayed with complete address on the packaging.</i>		P <input type="checkbox"/> F <input type="checkbox"/> N/A <input checked="" type="checkbox"/> N/T <input type="checkbox"/>
	Auf der Verpackung wird das Produkt nicht anders beworben als es die Zertifizierung beschreibt. Z.B. Kinder werden mit der Verpackung explizit angesprochen und aus dem Zertifikat geht hervor, dass es kein Spielzeug ist. <i>Packaging does not imply another use as certified. E.g. the package explicitly addresses but the certificate excludes use by children.</i>		P <input type="checkbox"/> F <input type="checkbox"/> N/A <input checked="" type="checkbox"/> N/T <input type="checkbox"/>

ANLAGE zum Prüfbericht-Nr. Attachment 1 of 50136445 011
APPENDIX to Test Report No.:

Seite 5 von 5
Page 5 of 5

ZUSATZ-DOKUMENTATION
ADDITIONAL DOCUMENTATION

Nachweise für die in der Checkliste benannten Punkte:
Evidences found during Product Verification Test:



PHOTO DOCUMENTATION

50136445 011

for

Hair Dryer

BY-573, BY-573D

Remark: BY-573D is same as BY-573 except rated input and BY-573D has main voltage selector switch.



This documentation consists of 4 pages (excluding this cover page)

Report Number: 50136445 011

Model: BY-573, BY-573D



BY-573
BY-573D



BY-573
BY-573D

Report Number: 50136445 011

Model: BY-573, BY-573D



BY-573
BY-573D
Before bending angle optimization.



BY-573
BY-573D
After bending angle optimization.

Report Number: 50136445 011

Model: BY-573, BY-573D



Representative model
BY-573

Remark:
BY-573D and BY-573
have the same
bending structure

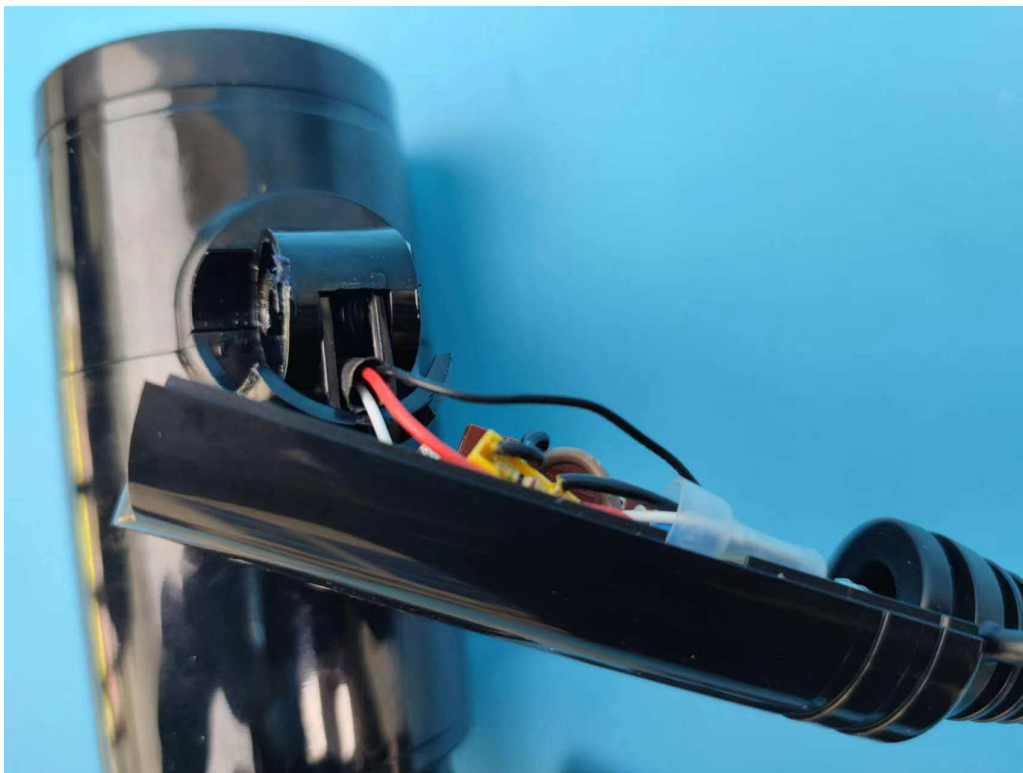


Representative model
BY-573

Remark:
BY-573D and BY-573
have the same
bending structure

Report Number: 50136445 011

Model: BY-573, BY-573D



BY-573
BY-573D



BY-573
BY-573D