

PRODUCT DATA

Rated voltage	:	220-240V~	--
Rated current	:	1300W	--
Rated frequency	:	50/60Hz	--
Degree of protection	:	IPX0	--
Accessories provided	:	Yes	See picture below
Class	:	I	--
Others	:	Type Y attachment	--

RATING LABEL & WARNING LABEL



LIST OF COMPONENTS

Object/part No.	Manufacturer/ trademark	Type/model	Technical data	Mark(s) of conformity	Component Verification
Plug	Not identified	AL-13	250 V~, 16A	VDE	Pass
Power cord	YUYAO ANLIAN	H05VV-F	3G0,75 mm ²	VDE	Pass
Internal wire	Cixi shuanghong	H05SJ-K	1x0.75 mm ² , 180°C	VDE	Pass
Thermal link	AUPO	BF192	Tf=192°C	VDE	Pass
Micro switch	WEIPENG	HK-14	250 V~, 16(3) A 5E4 T125	VDE	Pass
Heating element	Not identified	ASP	230V, 1300W	Test with appliance	Pass
Fan motor	Shenzhen Zhaoli	YJ62H-20	220-240V~, 50/60Hz, 33W	Test with appliance	Pass
Thermal motor protector	SET	K7	Tf=150°C	VDE	Pass
Motor lead wire	Shenzhen Mysun	3122	300V, 20AWG, 200°C	UL	Pass
PCB	Not identified	FR-4.0	V-0, thickness 1.5mm	Test with appliance	Pass
PCB lead wire	BOYUAN	1569	300V, 26AWG, 105°C	UL	Pass
NTC	ZHONGSHAN YIXIN	1332	300V, 24AWG, 200°C	UL	Pass
Fuse	Not identified	3T	3,15A, 250V	Test with appliance	Pass
Varistor	Not identified	10D471K	Not identified	Test with appliance	Pass
X2 capacitor	DAIN	MPX	0.1uf, 275V, X2, 40/110/21/C	VDE	Pass
Relay	Not identified	922-12VDC- SL-A	250V, 15A	TUV	Pass

RESULTS

CLAUSES	CONTENTS	PASS	FAIL	REMARK	N/A
7	Markings and instructions	X			
8	Protection against access to live parts	X			
16.3	Electric strength	X			
20	Stability and mechanical hazards	X			
21	Mechanical strength	X			
22	Construction	X			
23	Internal wiring	X			
24	Components	X			
25	Supply connection and external flexible cords	X			
26	Terminals for external conductors	X			
27	Provision for earthing	X			
28	Screws and connections	X			
29	Creepage distances, clearances and distances through insulation	X			

(Note: This construction review only refers to a construction analysis without any power on test and limited use of tool and equipments.)



RESULTS DESCRIPTION

Clause

<i>Description of the Remark</i>	<i>Picture of the remark</i>
N/A	

<i>Note: Description of the Remark</i>	<i>Picture of the remark</i>
The sample size was 5pcs but the construction check was performed on the first sample and the rest 4pcs for comparison check against the first sample.	

Please note that every statement made in this report is only valid for the samples tested and reported herein.

Trusting to have informed you sufficiently, we remain,
With best regards

DEKRA Testing and Certification (Shanghai) Ltd. Shenzhen Branch

Engineer name : Messi Cheng
Reviewed by : Peter Xu

Engineer signature : *messi cheng*
Reviewer signature : Peter Xu

ANNEX 1

EN 60335-1 and EN 60335-2-9 v1.0

CLAUSES	clauses which are not covered by this construction check
8	Clause 8.1.4
21	Clause 21.2 and Clause 21.101
22	1.clause 22.3 2. clause 22.5 3.clause 22.6 4.clause 22.7 5 clause 22.16 6. clause 22.18 7. clause 22.32 8. clause 22.42 9. clause 22.47 10. clause 22.48 11. clause 22.108 12.clause 22.109 13.clause 22.110 14. clause 22.111 15.clause 22.112
23	clause 23.3
24	Clause 24.5 and Clause 24.6 Clause 24.101 and Clause 24.102
25	Clause 25.14
27	Clause 27.5

Note:

- use simple tools for construction as below: Test probe, impact hammer, torque screw driver, pull and push tester less than 100 N, caliper and hi pot tester**

ANNEX

Pictures of Sample



1. Overall view of gift box



2. Gift box



3. Gift box



4. Gift box



5. Gift box



6. Gift box



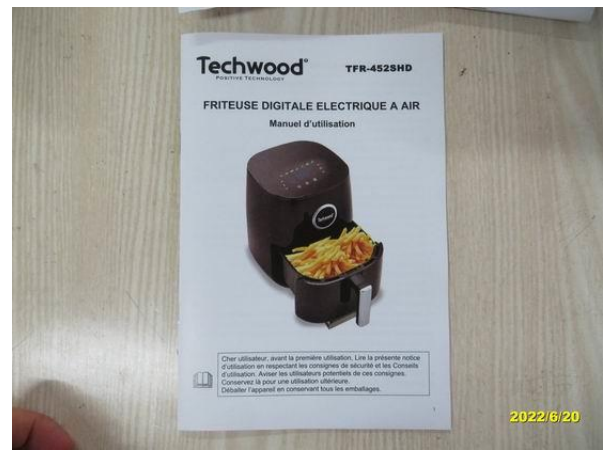
7. Gift box



8. Product and manual



9. Guarantee sheet



10. IM



11. Product view



12. Product view



13. Product view



14. Product view



15. Product view



16. Product view



17. Logo mark



18. Feet



19. Open pot view



20. Food tray



21. Pot with food tray



22. Internal view



23. Plug



24. Power cord



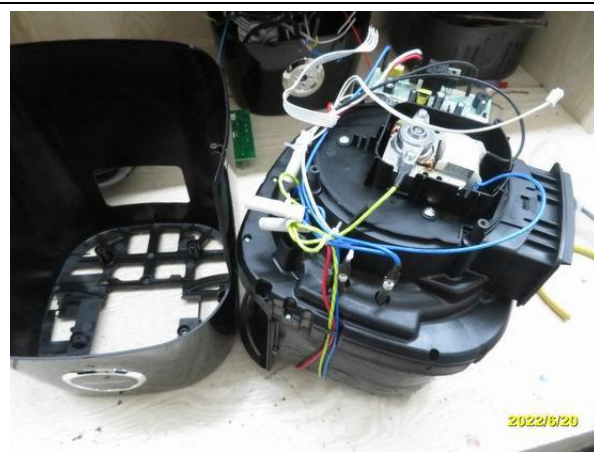
25. Internal view



26. Internal view



27. Internal view



28. Internal view



29. Internal view



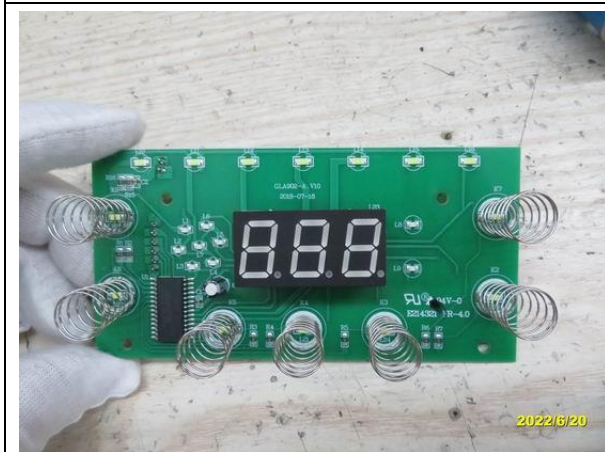
30. Internal view



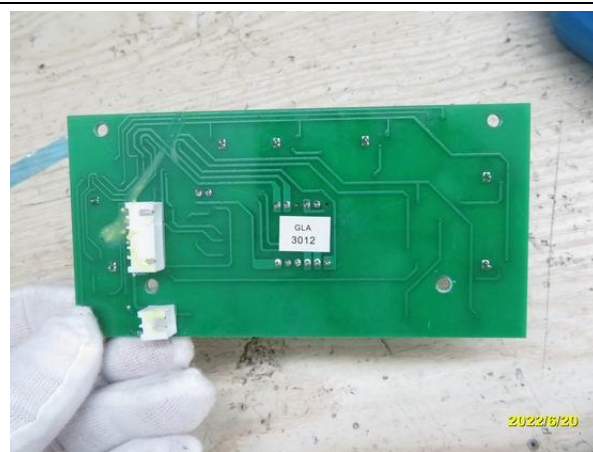
31. Internal view



32. Internal view



33. PCB for control panel



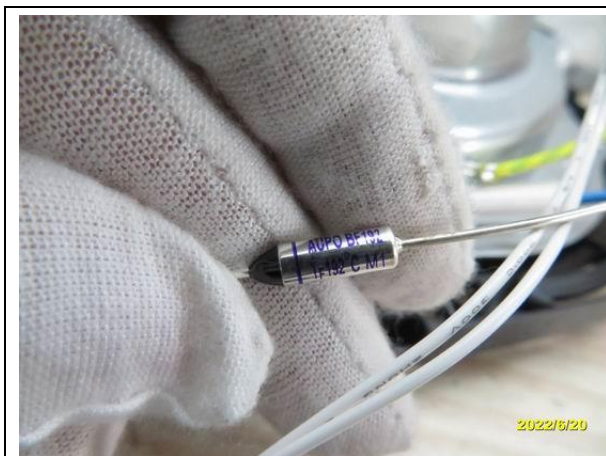
34. PCB for control panel



35. Marking on heating element



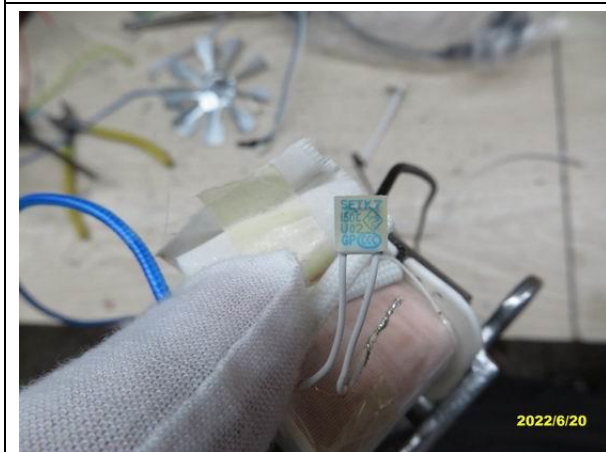
36. Micro switch



37. Thermal link



38. Fan motor



39. Motor protector



40. NTC



41. NTC lead wire



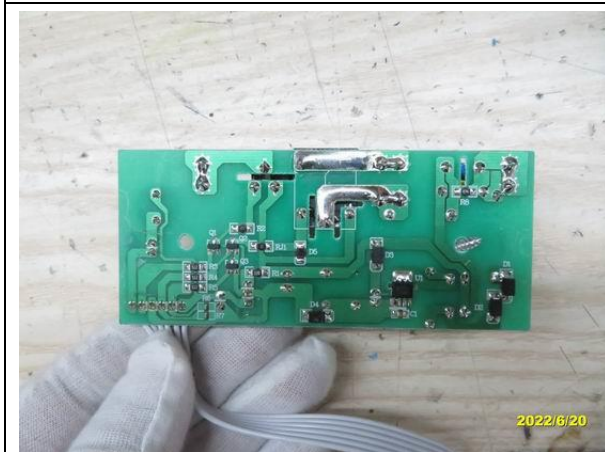
42. Internal wire



43. Motor lead wire



44. Main PCB



45. Main PCB






46. Marking on PCB



47. PCB lead wire



48. Fuse

	
<p>49. Varistor</p>	<p>50. X2 capacitor</p>
	<p>--</p>
<p>51. Relay</p>	<p>52. --</p>

--- END OF REPORT---