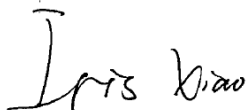


Sample Name : AIR FRYER,AIR FRYER OVEN  
SGS Job No. : NP21-002719 - NB  
Tested Basic Model No. : GLA-1003  
Client Ref. Information : SEE ATTACHMENT  
Date of Sample Received : 01 Jun 2021  
Verification Period : 01 Jun 2021 - 02 Jul 2021  
Verification Requested : With reference to RoHS Directive (EU) 2015/863 amending 2011/65/EU.  
Verification Method : Please refer to next page(s).  
Verification Result : Please refer to next page(s).  
Verification Conclusion : Based on the verification results of the submitted samples, the results of Lead, Mercury, Cadmium, Hexavalent chromium, Polybrominated biphenyls (PBBs), Polybrominated diphenyl ethers (PBDEs) and Phthalates such as Bis(2-ethylhexyl) phthalate (DEHP) , Butyl benzyl phthalate (BBP), Dibutyl phthalate (DBP) , and Diisobutyl phthalate (DIBP) comply with the limits as set by RoHS Directive (EU) 2015/863 amending Annex II to Directive 2011/65/EU.

Signed for and on behalf of  
SGS-CSTC Standards Technical Services Co., Ltd. Ningbo Branch



Iris Xiao  
Approved Signatory

scan to see the report



NGBEC2102580901



Unless otherwise agreed in writing, this document is issued by the Company subject to its General Conditions of Service printed overleaf, available on request or accessible at <http://www.sgs.com/en/Terms-and-Conditions.aspx> and, for electronic format documents, subject to Terms and Conditions for Electronic Documents at <http://www.sgs.com/en/Terms-and-Conditions/Terms-e-Documents.aspx>. Attention is drawn to the limitation of liability, indemnification and jurisdiction issues defined therein. Any holder of this document is advised that information contained hereon reflects the Company's findings at the time of its intervention only and within the limits of Client's instructions, if any. The Company's sole responsibility is to its Client and this document does not exonerate parties to a transaction from exercising all their rights and obligations under the transaction documents. This document cannot be reproduced except in full, without prior written approval of the Company. Any unauthorized alteration, forgery or falsification of the content or appearance of this document is unlawful and offenders may be prosecuted to the fullest extent of the law. Unless otherwise stated the results shown in this test report refer only to the sample(s) tested.  
**Attention: To check the authenticity of testing /inspection report & certificate, please contact us at telephone: (86-755) 8307 1443, or email: [CN.Doccheck@sgs.com](mailto:CN.Doccheck@sgs.com)**

## Verification Report

No. NGBEC2102580901

Date: 02 Jul 2021

Page 2 of 68

### Verification Method :

1. With reference to IEC 62321-2:2013, review was performed for the samples disjointed from the submitted articles.
2. With reference to IEC 62321-1:2013, tests were performed for the samples indicated by the photos in this report
  - (1) With reference to IEC 62321-3-1:2013, screening by EDXRF spectroscopy
  - (2) Wet chemical test method
    - a. With reference to IEC 62321-5:2013, determination of Cadmium by ICP-OES
    - b. With reference to IEC 62321-5:2013, determination of Lead by ICP-OES
    - c. With reference to IEC 62321-4:2013+AMD1:2017, determination of Mercury by ICP-OES
    - d. With reference to IEC 62321-7-1:2015, IEC 62321-7-2:2017 & ISO 17075-1:2017, determination of Hexavalent chromium by Colorimetric method using UV-Vis.
    - e. With reference to IEC 62321-6:2015 , determination of PBBs and PBDEs by GC-MS
3. With reference to IEC 62321-8:2017 determination of phthalates by GC-MS.



Unless otherwise agreed in writing, this document is issued by the Company subject to its General Conditions of Service printed overleaf, available on request or accessible at <http://www.sgs.com/en/Terms-and-Conditions.aspx> and, for electronic format documents, subject to Terms and Conditions for Electronic Documents at <http://www.sgs.com/en/Terms-and-Conditions/Terms-e-Document.aspx>. Attention is drawn to the limitation of liability, indemnification and jurisdiction issues defined therein. Any holder of this document is advised that information contained hereon reflects the Company's findings at the time of its intervention only and within the limits of Client's instructions, if any. The Company's sole responsibility is to its Client and this document does not exonerate parties to a transaction from exercising all their rights and obligations under the transaction documents. This document cannot be reproduced except in full, without prior written approval of the Company. Any unauthorized alteration, forgery or falsification of the content or appearance of this document is unlawful and offenders may be prosecuted to the fullest extent of the law. Unless otherwise stated the results shown in this test report refer only to the sample(s) tested.

Attention: To check the authenticity of testing /inspection report & certificate, please contact us at telephone: (86-755) 8307 1443, or email: [CN.Doccheck@sgs.com](mailto:CN.Doccheck@sgs.com)

In accordance with the result of material risk assessment, the following disjointed parts in the submitted sample have been verified.

Part No.	Part Description	Restricted Substances	Results of EDXRF <sup>(1)</sup>	Screening Result of PHTH <sup>(2)</sup>	Result of Wet Chemical Testing <sup>(3)</sup> (mg/kg)	Conclusion on EU RoHS	Sample Submitted / Resubmitted Date
1	GLA-1003-Silvery metal piece	Pb	BL	---	---	Comply	01 Jun 2021
		Cd	BL	---	---	Comply	
		Hg	BL	---	---	Comply	
		Cr(VI)▼	BL	---	---	Comply	
		PBBs	---	---	---	---	
		PBDEs	---	---	---	---	
		DBP	---	---	---	---	
		BBP	---	---	---	---	
		DEHP	---	---	---	---	
		DIBP	---	---	---	---	
2	GLA-1003-Black plastic bracket	Pb	BL	---	---	Comply	01 Jun 2021
		Cd	BL	---	---	Comply	
		Hg	BL	---	---	Comply	
		Cr(VI)▼	BL	---	---	Comply	
		PBBs	IN	---	ND	Comply	
		PBDEs	IN	---	ND	Comply	
		DBP	---	BL	---	Comply	
		BBP	---	BL	---	Comply	
		DEHP	---	BL	---	Comply	
		DIBP	---	BL	---	Comply	
3	GLA-1003-Silvery metal rod	Pb	OL	---	29441▲	Comply	01 Jun 2021
		Cd	BL	---	---	Comply	
		Hg	BL	---	---	Comply	
		Cr(VI)▼	BL	---	---	Comply	
		PBBs	---	---	---	---	
		PBDEs	---	---	---	---	
		DBP	---	---	---	---	



Unless otherwise agreed in writing, this document is issued by the Company subject to its General Conditions of Service printed overleaf, available on request or accessible at <http://www.sgs.com/en/Terms-and-Conditions.aspx> and, for electronic format documents, subject to Terms and Conditions for Electronic Documents at <http://www.sgs.com/en/Terms-and-Conditions/Terms-e-Documents.aspx>. Attention is drawn to the limitation of liability, indemnification and jurisdiction issues defined therein. Any holder of this document is advised that information contained hereon reflects the Company's findings at the time of its intervention only and within the limits of Client's instructions, if any. The Company's sole responsibility is to its Client and this document does not exonerate parties to a transaction from exercising all their rights and obligations under the transaction documents. This document cannot be reproduced except in full, without prior written approval of the Company. Any unauthorized alteration, forgery or falsification of the content or appearance of this document is unlawful and offenders may be prosecuted to the fullest extent of the law. Unless otherwise stated the results shown in this test report refer only to the sample(s) tested.

Attention: To check the authenticity of testing / inspection report & certificate, please contact us at telephone: (86-755) 8307 1443, or email: [CN.Doccheck@sgs.com](mailto:CN.Doccheck@sgs.com)

Part No.	Part Description	Restricted Substances	Results of EDXRF <sup>(1)</sup>	Screening Result of PHTH <sup>(2)</sup>	Result of Wet Chemical Testing <sup>(3)</sup> (mg/kg)	Conclusion on EU RoHS	Sample Submitted / Resubmitted Date
		BBP DEHP DIBP	--- --- ---	--- --- ---	--- --- ---	--- --- ---	
4	GLA-1003-Black rubber shell	Pb Cd Hg Cr(VI)▼ PBBs PBDEs DBP BBP DEHP DIBP	BL BL BL BL BL BL --- --- --- ---	--- --- --- --- --- --- BL BL BL BL	--- --- --- --- --- --- --- --- --- ---	Comply Comply Comply Comply Comply Comply Comply Comply Comply Comply	01 Jun 2021
5	GLA-1003-Black plastic sheath	Pb Cd Hg Cr(VI)▼ PBBs PBDEs DBP BBP DEHP DIBP	BL BL BL BL BL BL --- --- --- ---	--- --- --- --- --- --- BL BL BL BL	--- --- --- --- --- --- --- --- --- ---	Comply Comply Comply Comply Comply Comply Comply Comply Comply Comply	01 Jun 2021



Unless otherwise agreed in writing, this document is issued by the Company subject to its General Conditions of Service printed overleaf, available on request or accessible at <http://www.sgs.com/en/Terms-and-Conditions.aspx> and, for electronic format documents, subject to Terms and Conditions for Electronic Documents at <http://www.sgs.com/en/Terms-and-Conditions/Terms-e-Documents.aspx>. Attention is drawn to the limitation of liability, indemnification and jurisdiction issues defined therein. Any holder of this document is advised that information contained hereon reflects the Company's findings at the time of its intervention only and within the limits of Client's instructions, if any. The Company's sole responsibility is to its Client and this document does not exonerate parties to a transaction from exercising all their rights and obligations under the transaction documents. This document cannot be reproduced except in full, without prior written approval of the Company. Any unauthorized alteration, forgery or falsification of the content or appearance of this document is unlawful and offenders may be prosecuted to the fullest extent of the law. Unless otherwise stated the results shown in this test report refer only to the sample(s) tested.

Attention: To check the authenticity of testing/inspection report & certificate, please contact us at telephone: (86-755) 8307 1443, or email: [CN.Doccheck@sgs.com](mailto:CN.Doccheck@sgs.com)

Part No.	Part Description	Restricted Substances	Results of EDXRF <sup>(1)</sup>	Screening Result of PHTH <sup>(2)</sup>	Result of Wet Chemical Testing <sup>(3)</sup> (mg/kg)	Conclusion on EU RoHS	Sample Submitted / Resubmitted Date
6	GLA-1003-Blue plastic wire	Pb	BL	---	---	Comply	01 Jun 2021
		Cd	BL	---	---	Comply	
		Hg	BL	---	---	Comply	
		Cr(VI)▼	BL	---	---	Comply	
		PBBs	BL	---	---	Comply	
		PBDEs	BL	---	---	Comply	
		DBP	---	BL	---	Comply	
		BBP	---	BL	---	Comply	
		DEHP	---	BL	---	Comply	
DIBP	---	BL	---	Comply			
7	GLA-1003-Brown plastic wire	Pb	BL	---	---	Comply	01 Jun 2021
		Cd	BL	---	---	Comply	
		Hg	BL	---	---	Comply	
		Cr(VI)▼	BL	---	---	Comply	
		PBBs	BL	---	---	Comply	
		PBDEs	BL	---	---	Comply	
		DBP	---	BL	---	Comply	
		BBP	---	BL	---	Comply	
		DEHP	---	BL	---	Comply	
DIBP	---	BL	---	Comply			
8	GLA-1003-Yellow/green plastic wire	Pb	BL	---	---	Comply	01 Jun 2021
		Cd	BL	---	---	Comply	
		Hg	BL	---	---	Comply	
		Cr(VI)▼	BL	---	---	Comply	
		PBBs	BL	---	---	Comply	
		PBDEs	BL	---	---	Comply	
		DBP	---	BL	---	Comply	



Unless otherwise agreed in writing, this document is issued by the Company subject to its General Conditions of Service printed overleaf, available on request or accessible at <http://www.sgs.com/en/Terms-and-Conditions.aspx> and, for electronic format documents, subject to Terms and Conditions for Electronic Documents at <http://www.sgs.com/en/Terms-and-Conditions/Terms-e-Documents.aspx>. Attention is drawn to the limitation of liability, indemnification and jurisdiction issues defined therein. Any holder of this document is advised that information contained hereon reflects the Company's findings at the time of its intervention only and within the limits of Client's instructions, if any. The Company's sole responsibility is to its Client and this document does not exonerate parties to a transaction from exercising all their rights and obligations under the transaction documents. This document cannot be reproduced except in full, without prior written approval of the Company. Any unauthorized alteration, forgery or falsification of the content or appearance of this document is unlawful and offenders may be prosecuted to the fullest extent of the law. Unless otherwise stated the results shown in this test report refer only to the sample(s) tested.

Attention: To check the authenticity of testing / inspection report & certificate, please contact us at telephone: (86-755) 8307 1443, or email: [CN.Doccheck@sgs.com](mailto:CN.Doccheck@sgs.com)

Part No.	Part Description	Restricted Substances	Results of EDXRF <sup>(1)</sup>	Screening Result of PHTH <sup>(2)</sup>	Result of Wet Chemical Testing <sup>(3)</sup> (mg/kg)	Conclusion on EU RoHS	Sample Submitted / Resubmitted Date
		BBP	---	BL	---	Comply	
		DEHP	---	BL	---	Comply	
		DIBP	---	BL	---	Comply	
9	GLA-1003-Silvery metal screw	Pb	BL	---	---	Comply	01 Jun 2021
		Cd	BL	---	---	Comply	
		Hg	BL	---	---	Comply	
		Cr(VI)▼	IN	---	ND	Comply	
		PBBs	---	---	---	---	
		PBDEs	---	---	---	---	
		DBP	---	---	---	---	
		BBP	---	---	---	---	
		DEHP	---	---	---	---	
		DIBP	---	---	---	---	
10	GLA-1003-Black plastic shell	Pb	BL	---	---	Comply	01 Jun 2021
		Cd	BL	---	---	Comply	
		Hg	BL	---	---	Comply	
		Cr(VI)▼	BL	---	---	Comply	
		PBBs	BL	---	---	Comply	
		PBDEs	BL	---	---	Comply	
		DBP	---	BL	---	Comply	
		BBP	---	BL	---	Comply	
		DEHP	---	BL	---	Comply	
		DIBP	---	BL	---	Comply	



Unless otherwise agreed in writing, this document is issued by the Company subject to its General Conditions of Service printed overleaf, available on request or accessible at <http://www.sgs.com/en/Terms-and-Conditions.aspx> and, for electronic format documents, subject to Terms and Conditions for Electronic Documents at <http://www.sgs.com/en/Terms-and-Conditions/Terms-e-Documents.aspx>. Attention is drawn to the limitation of liability, indemnification and jurisdiction issues defined therein. Any holder of this document is advised that information contained hereon reflects the Company's findings at the time of its intervention only and within the limits of Client's instructions, if any. The Company's sole responsibility is to its Client and this document does not exonerate parties to a transaction from exercising all their rights and obligations under the transaction documents. This document cannot be reproduced except in full, without prior written approval of the Company. Any unauthorized alteration, forgery or falsification of the content or appearance of this document is unlawful and offenders may be prosecuted to the fullest extent of the law. Unless otherwise stated the results shown in this test report refer only to the sample(s) tested.

Attention: To check the authenticity of testing/inspection report & certificate, please contact us at telephone: (86-755) 8307 1443, or email: [CN.Doccheck@sgs.com](mailto:CN.Doccheck@sgs.com)

Part No.	Part Description	Restricted Substances	Results of EDXRF <sup>(1)</sup>	Screening Result of PHTH <sup>(2)</sup>	Result of Wet Chemical Testing <sup>(3)</sup> (mg/kg)	Conclusion on EU RoHS	Sample Submitted / Resubmitted Date
11	GLA-1003-Black rubber lump	Pb	BL	---	---	Comply	01 Jun 2021
		Cd	BL	---	---	Comply	
		Hg	BL	---	---	Comply	
		Cr(VI)▼	BL	---	---	Comply	
		PBBs	BL	---	---	Comply	
		PBDEs	BL	---	---	Comply	
		DBP	---	BL	---	Comply	
		BBP	---	BL	---	Comply	
		DEHP	---	BL	---	Comply	
DIBP	---	BL	---	Comply			
12	GLA-1003-Black plastic shell	Pb	BL	---	---	Comply	01 Jun 2021
		Cd	BL	---	---	Comply	
		Hg	BL	---	---	Comply	
		Cr(VI)▼	BL	---	---	Comply	
		PBBs	BL	---	---	Comply	
		PBDEs	BL	---	---	Comply	
		DBP	---	BL	---	Comply	
		BBP	---	BL	---	Comply	
		DEHP	---	BL	---	Comply	
DIBP	---	BL	---	Comply			
13	GLA-1003-Silvery metal screw	Pb	BL	---	---	Comply	01 Jun 2021
		Cd	BL	---	---	Comply	
		Hg	BL	---	---	Comply	
		Cr(VI)▼	IN	---	ND	Comply	
		PBBs	---	---	---	---	
		PBDEs	---	---	---	---	
		DBP	---	---	---	---	



Unless otherwise agreed in writing, this document is issued by the Company subject to its General Conditions of Service printed overleaf, available on request or accessible at <http://www.sgs.com/en/Terms-and-Conditions.aspx> and, for electronic format documents, subject to Terms and Conditions for Electronic Documents at <http://www.sgs.com/en/Terms-and-Conditions/Terms-e-Documents.aspx>. Attention is drawn to the limitation of liability, indemnification and jurisdiction issues defined therein. Any holder of this document is advised that information contained hereon reflects the Company's findings at the time of its intervention only and within the limits of Client's instructions, if any. The Company's sole responsibility is to its Client and this document does not exonerate parties to a transaction from exercising all their rights and obligations under the transaction documents. This document cannot be reproduced except in full, without prior written approval of the Company. Any unauthorized alteration, forgery or falsification of the content or appearance of this document is unlawful and offenders may be prosecuted to the fullest extent of the law. Unless otherwise stated the results shown in this test report refer only to the sample(s) tested.

Attention: To check the authenticity of testing / inspection report & certificate, please contact us at telephone: (86-755) 8307 1443, or email: [CN.Doccheck@sgs.com](mailto:CN.Doccheck@sgs.com)

Part No.	Part Description	Restricted Substances	Results of EDXRF <sup>(1)</sup>	Screening Result of PHTH <sup>(2)</sup>	Result of Wet Chemical Testing <sup>(3)</sup> (mg/kg)	Conclusion on EU RoHS	Sample Submitted / Resubmitted Date
		BBP DEHP DIBP	--- --- ---	--- --- ---	--- --- ---	--- --- ---	
14	GLA-1003-White plastic ribbon	Pb Cd Hg Cr(VI)▼ PBBs PBDEs DBP BBP DEHP DIBP	BL BL BL BL BL BL --- --- --- ---	--- --- --- --- --- --- BL BL BL BL	--- --- --- --- --- --- --- --- --- ---	Comply Comply Comply Comply Comply Comply Comply Comply Comply Comply	01 Jun 2021
15	GLA-1003-White fibre sheath	Pb Cd Hg Cr(VI)▼ PBBs PBDEs DBP BBP DEHP DIBP	BL BL BL BL BL BL --- --- --- ---	--- --- --- --- --- --- BL BL BL BL	--- --- --- --- --- --- --- --- --- ---	Comply Comply Comply Comply Comply Comply Comply Comply Comply Comply	01 Jun 2021



Unless otherwise agreed in writing, this document is issued by the Company subject to its General Conditions of Service printed overleaf, available on request or accessible at <http://www.sgs.com/en/Terms-and-Conditions.aspx> and, for electronic format documents, subject to Terms and Conditions for Electronic Documents at <http://www.sgs.com/en/Terms-and-Conditions/Terms-e-Documents.aspx>. Attention is drawn to the limitation of liability, indemnification and jurisdiction issues defined therein. Any holder of this document is advised that information contained hereon reflects the Company's findings at the time of its intervention only and within the limits of Client's instructions, if any. The Company's sole responsibility is to its Client and this document does not exonerate parties to a transaction from exercising all their rights and obligations under the transaction documents. This document cannot be reproduced except in full, without prior written approval of the Company. Any unauthorized alteration, forgery or falsification of the content or appearance of this document is unlawful and offenders may be prosecuted to the fullest extent of the law. Unless otherwise stated the results shown in this test report refer only to the sample(s) tested.

Attention: To check the authenticity of testing /inspection report & certificate, please contact us at telephone: (86-755) 8307 1443, or email: [CN.Doccheck@sgs.com](mailto:CN.Doccheck@sgs.com)

Part No.	Part Description	Restricted Substances	Results of EDXRF <sup>(1)</sup>	Screening Result of PHTH <sup>(2)</sup>	Result of Wet Chemical Testing <sup>(3)</sup> (mg/kg)	Conclusion on EU RoHS	Sample Submitted / Resubmitted Date
16	GLA-1003-White plastic sheath	Pb	BL	---	---	Comply	01 Jun 2021
		Cd	BL	---	---	Comply	
		Hg	BL	---	---	Comply	
		Cr(VI)▼	BL	---	---	Comply	
		PBBs	BL	---	---	Comply	
		PBDEs	BL	---	---	Comply	
		DBP	---	BL	---	Comply	
		BBP	---	BL	---	Comply	
		DEHP	---	BL	---	Comply	
DIBP	---	BL	---	Comply			
17	GLA-1003-Black plastic shell	Pb	BL	---	---	Comply	01 Jun 2021
		Cd	BL	---	---	Comply	
		Hg	BL	---	---	Comply	
		Cr(VI)▼	BL	---	---	Comply	
		PBBs	IN	---	ND	Comply	
		PBDEs	IN	---	ND	Comply	
		DBP	---	BL	---	Comply	
		BBP	---	BL	---	Comply	
		DEHP	---	BL	---	Comply	
DIBP	---	BL	---	Comply			
18	GLA-1003-Golden metal piece	Pb	BL	---	---	Comply	01 Jun 2021
		Cd	BL	---	---	Comply	
		Hg	BL	---	---	Comply	
		Cr(VI)▼	BL	---	---	Comply	
		PBBs	---	---	---	---	
		PBDEs	---	---	---	---	
		DBP	---	---	---	---	



Unless otherwise agreed in writing, this document is issued by the Company subject to its General Conditions of Service printed overleaf, available on request or accessible at <http://www.sgs.com/en/Terms-and-Conditions.aspx> and, for electronic format documents, subject to Terms and Conditions for Electronic Documents at <http://www.sgs.com/en/Terms-and-Conditions/Terms-e-Documents.aspx>. Attention is drawn to the limitation of liability, indemnification and jurisdiction issues defined therein. Any holder of this document is advised that information contained hereon reflects the Company's findings at the time of its intervention only and within the limits of Client's instructions, if any. The Company's sole responsibility is to its Client and this document does not exonerate parties to a transaction from exercising all their rights and obligations under the transaction documents. This document cannot be reproduced except in full, without prior written approval of the Company. Any unauthorized alteration, forgery or falsification of the content or appearance of this document is unlawful and offenders may be prosecuted to the fullest extent of the law. Unless otherwise stated the results shown in this test report refer only to the sample(s) tested.

Attention: To check the authenticity of testing / inspection report & certificate, please contact us at telephone: (86-755) 8307 1443, or email: [CN.Doccheck@sgs.com](mailto:CN.Doccheck@sgs.com)

Part No.	Part Description	Restricted Substances	Results of EDXRF <sup>(1)</sup>	Screening Result of PHTH <sup>(2)</sup>	Result of Wet Chemical Testing <sup>(3)</sup> (mg/kg)	Conclusion on EU RoHS	Sample Submitted / Resubmitted Date
		BBP DEHP DIBP	--- --- ---	--- --- ---	--- --- ---	--- --- ---	
19	GLA-1003-Copper-colored metal piece	Pb Cd Hg Cr(VI)▼ PBBs PBDEs DBP BBP DEHP DIBP	BL BL BL BL --- --- --- --- --- ---	--- --- --- --- --- --- --- --- --- ---	--- --- --- --- --- --- --- --- --- ---	Comply Comply Comply Comply --- --- --- --- --- ---	01 Jun 2021
20	GLA-1003-Silvery metal bracket	Pb Cd Hg Cr(VI)▼ PBBs PBDEs DBP BBP DEHP DIBP	BL BL BL BL --- --- --- --- --- ---	--- --- --- --- --- --- --- --- --- ---	--- --- --- --- --- --- --- --- --- ---	Comply Comply Comply Comply --- --- --- --- --- ---	01 Jun 2021



Unless otherwise agreed in writing, this document is issued by the Company subject to its General Conditions of Service printed overleaf, available on request or accessible at <http://www.sgs.com/en/Terms-and-Conditions.aspx> and, for electronic format documents, subject to Terms and Conditions for Electronic Documents at <http://www.sgs.com/en/Terms-and-Conditions/Terms-e-Documents.aspx>. Attention is drawn to the limitation of liability, indemnification and jurisdiction issues defined therein. Any holder of this document is advised that information contained hereon reflects the Company's findings at the time of its intervention only and within the limits of Client's instructions, if any. The Company's sole responsibility is to its Client and this document does not exonerate parties to a transaction from exercising all their rights and obligations under the transaction documents. This document cannot be reproduced except in full, without prior written approval of the Company. Any unauthorized alteration, forgery or falsification of the content or appearance of this document is unlawful and offenders may be prosecuted to the fullest extent of the law. Unless otherwise stated the results shown in this test report refer only to the sample(s) tested.

Attention: To check the authenticity of testing / inspection report & certificate, please contact us at telephone: (86-755) 8307 1443, or email: [CN.Doccheck@sgs.com](mailto:CN.Doccheck@sgs.com)

Part No.	Part Description	Restricted Substances	Results of EDXRF <sup>(1)</sup>	Screening Result of PHTH <sup>(2)</sup>	Result of Wet Chemical Testing <sup>(3)</sup> (mg/kg)	Conclusion on EU RoHS	Sample Submitted / Resubmitted Date
21	GLA-1003-Black plastic sheath	Pb	BL	---	---	Comply	01 Jun 2021
		Cd	BL	---	---	Comply	
		Hg	BL	---	---	Comply	
		Cr(VI)▼	BL	---	---	Comply	
		PBBs	BL	---	---	Comply	
		PBDEs	BL	---	---	Comply	
		DBP	---	BL	---	Comply	
		BBP	---	BL	---	Comply	
		DEHP	---	BL	---	Comply	
DIBP	---	BL	---	Comply			
22	GLA-1003-Silvery metal piece	Pb	BL	---	---	Comply	01 Jun 2021
		Cd	BL	---	---	Comply	
		Hg	BL	---	---	Comply	
		Cr(VI)▼	BL	---	---	Comply	
		PBBs	---	---	---	---	
		PBDEs	---	---	---	---	
		DBP	---	---	---	---	
		BBP	---	---	---	---	
		DEHP	---	---	---	---	
DIBP	---	---	---	---			
23	GLA-1003-Silvery metal pin	Pb	BL	---	---	Comply	01 Jun 2021
		Cd	BL	---	---	Comply	
		Hg	BL	---	---	Comply	
		Cr(VI)▼	BL	---	---	Comply	
		PBBs	---	---	---	---	
		PBDEs	---	---	---	---	
		DBP	---	---	---	---	



Unless otherwise agreed in writing, this document is issued by the Company subject to its General Conditions of Service printed overleaf, available on request or accessible at <http://www.sgs.com/en/Terms-and-Conditions.aspx> and, for electronic format documents, subject to Terms and Conditions for Electronic Documents at <http://www.sgs.com/en/Terms-and-Conditions/Terms-e-Documents.aspx>. Attention is drawn to the limitation of liability, indemnification and jurisdiction issues defined therein. Any holder of this document is advised that information contained hereon reflects the Company's findings at the time of its intervention only and within the limits of Client's instructions, if any. The Company's sole responsibility is to its Client and this document does not exonerate parties to a transaction from exercising all their rights and obligations under the transaction documents. This document cannot be reproduced except in full, without prior written approval of the Company. Any unauthorized alteration, forgery or falsification of the content or appearance of this document is unlawful and offenders may be prosecuted to the fullest extent of the law. Unless otherwise stated the results shown in this test report refer only to the sample(s) tested.

Attention: To check the authenticity of testing/inspection report & certificate, please contact us at telephone: (86-755) 8307 1443, or email: [CN.Doccheck@sgs.com](mailto:CN.Doccheck@sgs.com)

Part No.	Part Description	Restricted Substances	Results of EDXRF <sup>(1)</sup>	Screening Result of PHTH <sup>(2)</sup>	Result of Wet Chemical Testing <sup>(3)</sup> (mg/kg)	Conclusion on EU RoHS	Sample Submitted / Resubmitted Date
		BBP DEHP DIBP	--- --- ---	--- --- ---	--- --- ---	--- --- ---	
24	GLA-1003-Yellow/green fibre wire	Pb Cd Hg Cr(VI)▼ PBBs PBDEs DBP BBP DEHP DIBP	BL BL BL BL BL BL --- --- --- ---	--- --- --- --- --- --- BL BL BL BL	--- --- --- --- --- --- --- --- --- ---	Comply Comply Comply Comply Comply Comply Comply Comply Comply Comply	01 Jun 2021
25	GLA-1003-Dark blue fibre wire	Pb Cd Hg Cr(VI)▼ PBBs PBDEs DBP BBP DEHP DIBP	BL BL BL BL BL BL --- --- --- ---	--- --- --- --- --- --- BL BL BL BL	--- --- --- --- --- --- --- --- --- ---	Comply Comply Comply Comply Comply Comply Comply Comply Comply Comply	01 Jun 2021



Unless otherwise agreed in writing, this document is issued by the Company subject to its General Conditions of Service printed overleaf, available on request or accessible at <http://www.sgs.com/en/Terms-and-Conditions.aspx> and, for electronic format documents, subject to Terms and Conditions for Electronic Documents at <http://www.sgs.com/en/Terms-and-Conditions/Terms-e-Documents.aspx>. Attention is drawn to the limitation of liability, indemnification and jurisdiction issues defined therein. Any holder of this document is advised that information contained hereon reflects the Company's findings at the time of its intervention only and within the limits of Client's instructions, if any. The Company's sole responsibility is to its Client and this document does not exonerate parties to a transaction from exercising all their rights and obligations under the transaction documents. This document cannot be reproduced except in full, without prior written approval of the Company. Any unauthorized alteration, forgery or falsification of the content or appearance of this document is unlawful and offenders may be prosecuted to the fullest extent of the law. Unless otherwise stated the results shown in this test report refer only to the sample(s) tested.

Attention: To check the authenticity of testing/inspection report & certificate, please contact us at telephone: (86-755) 8307 1443, or email: [CN.Doccheck@sgs.com](mailto:CN.Doccheck@sgs.com)

Part No.	Part Description	Restricted Substances	Results of EDXRF <sup>(1)</sup>	Screening Result of PHTH <sup>(2)</sup>	Result of Wet Chemical Testing <sup>(3)</sup> (mg/kg)	Conclusion on EU RoHS	Sample Submitted / Resubmitted Date
26	GLA-1003-Blue fibre wire	Pb	BL	---	---	Comply	01 Jun 2021
		Cd	BL	---	---	Comply	
		Hg	BL	---	---	Comply	
		Cr(VI)▼	BL	---	---	Comply	
		PBBs	BL	---	---	Comply	
		PBDEs	BL	---	---	Comply	
		DBP	---	BL	---	Comply	
		BBP	---	BL	---	Comply	
		DEHP	---	BL	---	Comply	
DIBP	---	BL	---	Comply			
27	GLA-1003-Red fibre wire	Pb	BL	---	---	Comply	01 Jun 2021
		Cd	BL	---	---	Comply	
		Hg	BL	---	---	Comply	
		Cr(VI)▼	BL	---	---	Comply	
		PBBs	BL	---	---	Comply	
		PBDEs	BL	---	---	Comply	
		DBP	---	BL	---	Comply	
		BBP	---	BL	---	Comply	
		DEHP	---	BL	---	Comply	
DIBP	---	BL	---	Comply			
28	GLA-1003-Silvery metal screw	Pb	BL	---	---	Comply	01 Jun 2021
		Cd	BL	---	---	Comply	
		Hg	BL	---	---	Comply	
		Cr(VI)▼	IN	---	ND	Comply	
		PBBs	---	---	---	---	
		PBDEs	---	---	---	---	
		DBP	---	---	---	---	



Unless otherwise agreed in writing, this document is issued by the Company subject to its General Conditions of Service printed overleaf, available on request or accessible at <http://www.sgs.com/en/Terms-and-Conditions.aspx> and, for electronic format documents, subject to Terms and Conditions for Electronic Documents at <http://www.sgs.com/en/Terms-and-Conditions/Terms-e-Documents.aspx>. Attention is drawn to the limitation of liability, indemnification and jurisdiction issues defined therein. Any holder of this document is advised that information contained hereon reflects the Company's findings at the time of its intervention only and within the limits of Client's instructions, if any. The Company's sole responsibility is to its Client and this document does not exonerate parties to a transaction from exercising all their rights and obligations under the transaction documents. This document cannot be reproduced except in full, without prior written approval of the Company. Any unauthorized alteration, forgery or falsification of the content or appearance of this document is unlawful and offenders may be prosecuted to the fullest extent of the law. Unless otherwise stated the results shown in this test report refer only to the sample(s) tested.

Attention: To check the authenticity of testing / inspection report & certificate, please contact us at telephone: (86-755) 8307 1443, or email: [CN.Doccheck@sgs.com](mailto:CN.Doccheck@sgs.com)

Part No.	Part Description	Restricted Substances	Results of EDXRF <sup>(1)</sup>	Screening Result of PHTH <sup>(2)</sup>	Result of Wet Chemical Testing <sup>(3)</sup> (mg/kg)	Conclusion on EU RoHS	Sample Submitted / Resubmitted Date
		BBP DEHP DIBP	--- --- ---	--- --- ---	--- --- ---	--- --- ---	
29	GLA-1003-Silvery metal rod	Pb Cd Hg Cr(VI)▼ PBBs PBDEs DBP BBP DEHP DIBP	BL BL BL IN --- --- --- --- --- ---	--- --- --- --- --- --- --- --- --- ---	--- --- --- ND --- --- --- --- --- ---	Comply Comply Comply Comply --- --- --- --- --- ---	01 Jun 2021
30	GLA-1003-Silvery metal piece	Pb Cd Hg Cr(VI)▼ PBBs PBDEs DBP BBP DEHP DIBP	BL BL BL IN --- --- --- --- --- ---	--- --- --- --- --- --- --- --- --- ---	--- --- --- ND --- --- --- --- --- ---	Comply Comply Comply Comply --- --- --- --- --- ---	01 Jun 2021



Unless otherwise agreed in writing, this document is issued by the Company subject to its General Conditions of Service printed overleaf, available on request or accessible at <http://www.sgs.com/en/Terms-and-Conditions.aspx> and, for electronic format documents, subject to Terms and Conditions for Electronic Documents at <http://www.sgs.com/en/Terms-and-Conditions/Terms-e-Documents.aspx>. Attention is drawn to the limitation of liability, indemnification and jurisdiction issues defined therein. Any holder of this document is advised that information contained hereon reflects the Company's findings at the time of its intervention only and within the limits of Client's instructions, if any. The Company's sole responsibility is to its Client and this document does not exonerate parties to a transaction from exercising all their rights and obligations under the transaction documents. This document cannot be reproduced except in full, without prior written approval of the Company. Any unauthorized alteration, forgery or falsification of the content or appearance of this document is unlawful and offenders may be prosecuted to the fullest extent of the law. Unless otherwise stated the results shown in this test report refer only to the sample(s) tested.

Attention: To check the authenticity of testing / inspection report & certificate, please contact us at telephone: (86-755) 8307 1443, or email: [CN.Doccheck@sgs.com](mailto:CN.Doccheck@sgs.com)

Part No.	Part Description	Restricted Substances	Results of EDXRF <sup>(1)</sup>	Screening Result of PHTH <sup>(2)</sup>	Result of Wet Chemical Testing <sup>(3)</sup> (mg/kg)	Conclusion on EU RoHS	Sample Submitted / Resubmitted Date
31	GLA-1003-Black plastic lump	Pb	BL	---	---	Comply	01 Jun 2021
		Cd	BL	---	---	Comply	
		Hg	BL	---	---	Comply	
		Cr(VI)▼	BL	---	---	Comply	
		PBBs	BL	---	---	Comply	
		PBDEs	BL	---	---	Comply	
		DBP	---	BL	---	Comply	
		BBP	---	BL	---	Comply	
		DEHP	---	BL	---	Comply	
DIBP	---	BL	---	Comply			
32	GLA-1003-Silvery metal piece	Pb	BL	---	---	Comply	01 Jun 2021
		Cd	BL	---	---	Comply	
		Hg	BL	---	---	Comply	
		Cr(VI)▼	IN	---	ND	Comply	
		PBBs	---	---	---	---	
		PBDEs	---	---	---	---	
		DBP	---	---	---	---	
		BBP	---	---	---	---	
		DEHP	---	---	---	---	
DIBP	---	---	---	---			
33	GLA-1003-Transparent plastic shell	Pb	BL	---	---	Comply	01 Jun 2021
		Cd	BL	---	---	Comply	
		Hg	BL	---	---	Comply	
		Cr(VI)▼	BL	---	---	Comply	
		PBBs	BL	---	---	Comply	
		PBDEs	BL	---	---	Comply	
		DBP	---	BL	---	Comply	



Unless otherwise agreed in writing, this document is issued by the Company subject to its General Conditions of Service printed overleaf, available on request or accessible at <http://www.sgs.com/en/Terms-and-Conditions.aspx> and, for electronic format documents, subject to Terms and Conditions for Electronic Documents at <http://www.sgs.com/en/Terms-and-Conditions/Terms-e-Documents.aspx>. Attention is drawn to the limitation of liability, indemnification and jurisdiction issues defined therein. Any holder of this document is advised that information contained hereon reflects the Company's findings at the time of its intervention only and within the limits of Client's instructions, if any. The Company's sole responsibility is to its Client and this document does not exonerate parties to a transaction from exercising all their rights and obligations under the transaction documents. This document cannot be reproduced except in full, without prior written approval of the Company. Any unauthorized alteration, forgery or falsification of the content or appearance of this document is unlawful and offenders may be prosecuted to the fullest extent of the law. Unless otherwise stated the results shown in this test report refer only to the sample(s) tested.

Attention: To check the authenticity of testing/inspection report & certificate, please contact us at telephone: (86-755) 8307 1443, or email: [CN.Doccheck@sgs.com](mailto:CN.Doccheck@sgs.com)

Part No.	Part Description	Restricted Substances	Results of EDXRF <sup>(1)</sup>	Screening Result of PHTH <sup>(2)</sup>	Result of Wet Chemical Testing <sup>(3)</sup> (mg/kg)	Conclusion on EU RoHS	Sample Submitted / Resubmitted Date
		BBP	---	BL	---	Comply	
		DEHP	---	BL	---	Comply	
		DIBP	---	BL	---	Comply	
34	GLA-1003-Black plastic shell	Pb	BL	---	---	Comply	01 Jun 2021
		Cd	BL	---	---	Comply	
		Hg	BL	---	---	Comply	
		Cr(VI)▼	BL	---	---	Comply	
		PBBs	BL	---	---	Comply	
		PBDEs	BL	---	---	Comply	
		DBP	---	BL	---	Comply	
		BBP	---	BL	---	Comply	
		DEHP	---	BL	---	Comply	
		DIBP	---	BL	---	Comply	
35	GLA-1003-Silvery metal shell	Pb	BL	---	---	Comply	01 Jun 2021
		Cd	BL	---	---	Comply	
		Hg	BL	---	---	Comply	
		Cr(VI)▼	BL	---	---	Comply	
		PBBs	---	---	---	---	
		PBDEs	---	---	---	---	
		DBP	---	---	---	---	
		BBP	---	---	---	---	
		DEHP	---	---	---	---	
		DIBP	---	---	---	---	



Unless otherwise agreed in writing, this document is issued by the Company subject to its General Conditions of Service printed overleaf, available on request or accessible at <http://www.sgs.com/en/Terms-and-Conditions.aspx> and, for electronic format documents, subject to Terms and Conditions for Electronic Documents at <http://www.sgs.com/en/Terms-and-Conditions/Terms-e-Documents.aspx>. Attention is drawn to the limitation of liability, indemnification and jurisdiction issues defined therein. Any holder of this document is advised that information contained hereon reflects the Company's findings at the time of its intervention only and within the limits of Client's instructions, if any. The Company's sole responsibility is to its Client and this document does not exonerate parties to a transaction from exercising all their rights and obligations under the transaction documents. This document cannot be reproduced except in full, without prior written approval of the Company. Any unauthorized alteration, forgery or falsification of the content or appearance of this document is unlawful and offenders may be prosecuted to the fullest extent of the law. Unless otherwise stated the results shown in this test report refer only to the sample(s) tested.

Attention: To check the authenticity of testing /inspection report & certificate, please contact us at telephone: (86-755) 8307 1443, or email: [CN.Doccheck@sgs.com](mailto:CN.Doccheck@sgs.com)

Part No.	Part Description	Restricted Substances	Results of EDXRF <sup>(1)</sup>	Screening Result of PHTH <sup>(2)</sup>	Result of Wet Chemical Testing <sup>(3)</sup> (mg/kg)	Conclusion on EU RoHS	Sample Submitted / Resubmitted Date
36	GLA-1003-Silvery metal shell	Pb	BL	---	---	Comply	01 Jun 2021
		Cd	BL	---	---	Comply	
		Hg	BL	---	---	Comply	
		Cr(VI)▼	IN	---	ND	Comply	
		PBBs	---	---	---	---	
		PBDEs	---	---	---	---	
		DBP	---	---	---	---	
		BBP	---	---	---	---	
		DEHP	---	---	---	---	
37	GLA-1003-Silvery metal screw	Pb	BL	---	---	Comply	01 Jun 2021
		Cd	BL	---	---	Comply	
		Hg	BL	---	---	Comply	
		Cr(VI)▼	IN	---	ND	Comply	
		PBBs	---	---	---	---	
		PBDEs	---	---	---	---	
		DBP	---	---	---	---	
		BBP	---	---	---	---	
		DEHP	---	---	---	---	
38	GLA-1003-Black plastic piece	Pb	BL	---	---	Comply	01 Jun 2021
		Cd	BL	---	---	Comply	
		Hg	BL	---	---	Comply	
		Cr(VI)▼	BL	---	---	Comply	
		PBBs	BL	---	---	Comply	
		PBDEs	BL	---	---	Comply	
		DBP	---	BL	---	Comply	



Unless otherwise agreed in writing, this document is issued by the Company subject to its General Conditions of Service printed overleaf, available on request or accessible at <http://www.sgs.com/en/Terms-and-Conditions.aspx> and, for electronic format documents, subject to Terms and Conditions for Electronic Documents at <http://www.sgs.com/en/Terms-and-Conditions/Terms-e-Documents.aspx>. Attention is drawn to the limitation of liability, indemnification and jurisdiction issues defined therein. Any holder of this document is advised that information contained hereon reflects the Company's findings at the time of its intervention only and within the limits of Client's instructions, if any. The Company's sole responsibility is to its Client and this document does not exonerate parties to a transaction from exercising all their rights and obligations under the transaction documents. This document cannot be reproduced except in full, without prior written approval of the Company. Any unauthorized alteration, forgery or falsification of the content or appearance of this document is unlawful and offenders may be prosecuted to the fullest extent of the law. Unless otherwise stated the results shown in this test report refer only to the sample(s) tested.

Attention: To check the authenticity of testing/inspection report & certificate, please contact us at telephone: (86-755) 8307 1443, or email: [CN.Doccheck@sgs.com](mailto:CN.Doccheck@sgs.com)

Part No.	Part Description	Restricted Substances	Results of EDXRF <sup>(1)</sup>	Screening Result of PHTH <sup>(2)</sup>	Result of Wet Chemical Testing <sup>(3)</sup> (mg/kg)	Conclusion on EU RoHS	Sample Submitted / Resubmitted Date
		BBP	---	BL	---	Comply	
		DEHP	---	BL	---	Comply	
		DIBP	---	BL	---	Comply	
39	GLA-1003-Semitransparent plastic shell	Pb	BL	---	---	Comply	01 Jun 2021
		Cd	BL	---	---	Comply	
		Hg	BL	---	---	Comply	
		Cr(VI)▼	BL	---	---	Comply	
		PBBs	BL	---	---	Comply	
		PBDEs	BL	---	---	Comply	
		DBP	---	BL	---	Comply	
		BBP	---	BL	---	Comply	
		DEHP	---	BL	---	Comply	
		DIBP	---	BL	---	Comply	
40	GLA-1003-Silvery metal spring	Pb	BL	---	---	Comply	01 Jun 2021
		Cd	BL	---	---	Comply	
		Hg	BL	---	---	Comply	
		Cr(VI)▼	BL	---	---	Comply	
		PBBs	---	---	---	---	
		PBDEs	---	---	---	---	
		DBP	---	---	---	---	
		BBP	---	---	---	---	
		DEHP	---	---	---	---	
		DIBP	---	---	---	---	



Unless otherwise agreed in writing, this document is issued by the Company subject to its General Conditions of Service printed overleaf, available on request or accessible at <http://www.sgs.com/en/Terms-and-Conditions.aspx> and, for electronic format documents, subject to Terms and Conditions for Electronic Documents at <http://www.sgs.com/en/Terms-and-Conditions/Terms-e-Documents.aspx>. Attention is drawn to the limitation of liability, indemnification and jurisdiction issues defined therein. Any holder of this document is advised that information contained hereon reflects the Company's findings at the time of its intervention only and within the limits of Client's instructions, if any. The Company's sole responsibility is to its Client and this document does not exonerate parties to a transaction from exercising all their rights and obligations under the transaction documents. This document cannot be reproduced except in full, without prior written approval of the Company. Any unauthorized alteration, forgery or falsification of the content or appearance of this document is unlawful and offenders may be prosecuted to the fullest extent of the law. Unless otherwise stated the results shown in this test report refer only to the sample(s) tested.

Attention: To check the authenticity of testing/inspection report & certificate, please contact us at telephone: (86-755) 8307 1443, or email: [CN.Doccheck@sgs.com](mailto:CN.Doccheck@sgs.com)

Part No.	Part Description	Restricted Substances	Results of EDXRF <sup>(1)</sup>	Screening Result of PHTH <sup>(2)</sup>	Result of Wet Chemical Testing <sup>(3)</sup> (mg/kg)	Conclusion on EU RoHS	Sample Submitted / Resubmitted Date
41	GLA-1003-Black digifax body	Pb	BL	---	---	Comply	01 Jun 2021
		Cd	BL	---	---	Comply	
		Hg	BL	---	---	Comply	
		Cr(VI)▼	BL	---	---	Comply	
		PBBs	IN	---	ND	Comply	
		PBDEs	IN	---	ND	Comply	
		DBP	---	BL	---	Comply	
		BBP	---	BL	---	Comply	
		DEHP	---	BL	---	Comply	
DIBP	---	BL	---	Comply			
42	GLA-1003-Black IC body	Pb	BL	---	---	Comply	01 Jun 2021
		Cd	BL	---	---	Comply	
		Hg	BL	---	---	Comply	
		Cr(VI)▼	BL	---	---	Comply	
		PBBs	BL	---	---	Comply	
		PBDEs	BL	---	---	Comply	
		DBP	---	BL	---	Comply	
		BBP	---	BL	---	Comply	
		DEHP	---	BL	---	Comply	
DIBP	---	BL	---	Comply			
43	GLA-1003-White plastic lump	Pb	BL	---	---	Comply	01 Jun 2021
		Cd	BL	---	---	Comply	
		Hg	BL	---	---	Comply	
		Cr(VI)▼	BL	---	---	Comply	
		PBBs	BL	---	---	Comply	
		PBDEs	BL	---	---	Comply	
		DBP	---	BL	---	Comply	



Unless otherwise agreed in writing, this document is issued by the Company subject to its General Conditions of Service printed overleaf, available on request or accessible at <http://www.sgs.com/en/Terms-and-Conditions.aspx> and, for electronic format documents, subject to Terms and Conditions for Electronic Documents at <http://www.sgs.com/en/Terms-and-Conditions/Terms-e-Documents.aspx>. Attention is drawn to the limitation of liability, indemnification and jurisdiction issues defined therein. Any holder of this document is advised that information contained hereon reflects the Company's findings at the time of its intervention only and within the limits of Client's instructions, if any. The Company's sole responsibility is to its Client and this document does not exonerate parties to a transaction from exercising all their rights and obligations under the transaction documents. This document cannot be reproduced except in full, without prior written approval of the Company. Any unauthorized alteration, forgery or falsification of the content or appearance of this document is unlawful and offenders may be prosecuted to the fullest extent of the law. Unless otherwise stated the results shown in this test report refer only to the sample(s) tested.

Attention: To check the authenticity of testing / inspection report & certificate, please contact us at telephone: (86-755) 8307 1443, or email: [CN.Doccheck@sgs.com](mailto:CN.Doccheck@sgs.com)

Part No.	Part Description	Restricted Substances	Results of EDXRF <sup>(1)</sup>	Screening Result of PHTH <sup>(2)</sup>	Result of Wet Chemical Testing <sup>(3)</sup> (mg/kg)	Conclusion on EU RoHS	Sample Submitted / Resubmitted Date
		BBP	---	BL	---	Comply	
		DEHP	---	BL	---	Comply	
		DIBP	---	BL	---	Comply	
44	GLA-1003-Black plastic jacket	Pb	BL	---	---	Comply	01 Jun 2021
		Cd	BL	---	---	Comply	
		Hg	BL	---	---	Comply	
		Cr(VI)▼	BL	---	---	Comply	
		PBBs	BL	---	---	Comply	
		PBDEs	BL	---	---	Comply	
		DBP	---	BL	---	Comply	
		BBP	---	BL	---	Comply	
		DEHP	---	BL	---	Comply	
		DIBP	---	BL	---	Comply	
45	GLA-1003-Black rubber lump	Pb	BL	---	---	Comply	01 Jun 2021
		Cd	BL	---	---	Comply	
		Hg	BL	---	---	Comply	
		Cr(VI)▼	BL	---	---	Comply	
		PBBs	BL	---	---	Comply	
		PBDEs	BL	---	---	Comply	
		DBP	---	BL	---	Comply	
		BBP	---	BL	---	Comply	
		DEHP	---	BL	---	Comply	
		DIBP	---	BL	---	Comply	



Unless otherwise agreed in writing, this document is issued by the Company subject to its General Conditions of Service printed overleaf, available on request or accessible at <http://www.sgs.com/en/Terms-and-Conditions.aspx> and, for electronic format documents, subject to Terms and Conditions for Electronic Documents at <http://www.sgs.com/en/Terms-and-Conditions/Terms-e-Documents.aspx>. Attention is drawn to the limitation of liability, indemnification and jurisdiction issues defined therein. Any holder of this document is advised that information contained hereon reflects the Company's findings at the time of its intervention only and within the limits of Client's instructions, if any. The Company's sole responsibility is to its Client and this document does not exonerate parties to a transaction from exercising all their rights and obligations under the transaction documents. This document cannot be reproduced except in full, without prior written approval of the Company. Any unauthorized alteration, forgery or falsification of the content or appearance of this document is unlawful and offenders may be prosecuted to the fullest extent of the law. Unless otherwise stated the results shown in this test report refer only to the sample(s) tested.

Attention: To check the authenticity of testing/inspection report & certificate, please contact us at telephone: (86-755) 8307 1443, or email: [CN.Doccheck@sgs.com](mailto:CN.Doccheck@sgs.com)

Part No.	Part Description	Restricted Substances	Results of EDXRF <sup>(1)</sup>	Screening Result of PHTH <sup>(2)</sup>	Result of Wet Chemical Testing <sup>(3)</sup> (mg/kg)	Conclusion on EU RoHS	Sample Submitted / Resubmitted Date
46	GLA-1003-Green PCB body	Pb	BL	---	---	Comply	01 Jun 2021
		Cd	BL	---	---	Comply	
		Hg	BL	---	---	Comply	
		Cr(VI)▼	BL	---	---	Comply	
		PBBs	IN	---	ND	Comply	
		PBDEs	IN	---	ND	Comply	
		DBP	---	BL	---	Comply	
		BBP	---	BL	---	Comply	
		DEHP	---	BL	---	Comply	
DIBP	---	BL	---	Comply			
47	GLA-1003-Silvery metal soldering tin	Pb	BL	---	---	Comply	01 Jun 2021
		Cd	BL	---	---	Comply	
		Hg	BL	---	---	Comply	
		Cr(VI)▼	BL	---	---	Comply	
		PBBs	---	---	---	---	
		PBDEs	---	---	---	---	
		DBP	---	---	---	---	
		BBP	---	---	---	---	
		DEHP	---	---	---	---	
DIBP	---	---	---	---			
48	GLA-1003-White/gray plastic wire	Pb	BL	---	---	Comply	01 Jun 2021
		Cd	BL	---	---	Comply	
		Hg	BL	---	---	Comply	
		Cr(VI)▼	BL	---	---	Comply	
		PBBs	BL	---	---	Comply	
		PBDEs	BL	---	---	Comply	
		DBP	---	BL	---	Comply	



Unless otherwise agreed in writing, this document is issued by the Company subject to its General Conditions of Service printed overleaf, available on request or accessible at <http://www.sgs.com/en/Terms-and-Conditions.aspx> and, for electronic format documents, subject to Terms and Conditions for Electronic Documents at <http://www.sgs.com/en/Terms-and-Conditions/Terms-e-Documents.aspx>. Attention is drawn to the limitation of liability, indemnification and jurisdiction issues defined therein. Any holder of this document is advised that information contained hereon reflects the Company's findings at the time of its intervention only and within the limits of Client's instructions, if any. The Company's sole responsibility is to its Client and this document does not exonerate parties to a transaction from exercising all their rights and obligations under the transaction documents. This document cannot be reproduced except in full, without prior written approval of the Company. Any unauthorized alteration, forgery or falsification of the content or appearance of this document is unlawful and offenders may be prosecuted to the fullest extent of the law. Unless otherwise stated the results shown in this test report refer only to the sample(s) tested.

Attention: To check the authenticity of testing/inspection report & certificate, please contact us at telephone: (86-755) 8307 1443, or email: [CN.Doccheck@sgs.com](mailto:CN.Doccheck@sgs.com)

Part No.	Part Description	Restricted Substances	Results of EDXRF <sup>(1)</sup>	Screening Result of PHTH <sup>(2)</sup>	Result of Wet Chemical Testing <sup>(3)</sup> (mg/kg)	Conclusion on EU RoHS	Sample Submitted / Resubmitted Date
		BBP	---	BL	---	Comply	
		DEHP	---	BL	---	Comply	
		DIBP	---	BL	---	Comply	
49	GLA-1003-Black plastic shell	Pb	BL	---	---	Comply	01 Jun 2021
		Cd	BL	---	---	Comply	
		Hg	BL	---	---	Comply	
		Cr(VI)▼	BL	---	---	Comply	
		PBBs	IN	---	ND	Comply	
		PBDEs	IN	---	ND	Comply	
		DBP	---	BL	---	Comply	
		BBP	---	BL	---	Comply	
		DEHP	---	BL	---	Comply	
		DIBP	---	BL	---	Comply	
50	GLA-1003-Golden metal piece	Pb	BL	---	---	Comply	01 Jun 2021
		Cd	BL	---	---	Comply	
		Hg	BL	---	---	Comply	
		Cr(VI)▼	BL	---	---	Comply	
		PBBs	---	---	---	---	
		PBDEs	---	---	---	---	
		DBP	---	---	---	---	
		BBP	---	---	---	---	
		DEHP	---	---	---	---	
		DIBP	---	---	---	---	



Unless otherwise agreed in writing, this document is issued by the Company subject to its General Conditions of Service printed overleaf, available on request or accessible at <http://www.sgs.com/en/Terms-and-Conditions.aspx> and, for electronic format documents, subject to Terms and Conditions for Electronic Documents at <http://www.sgs.com/en/Terms-and-Conditions/Terms-e-Documents.aspx>. Attention is drawn to the limitation of liability, indemnification and jurisdiction issues defined therein. Any holder of this document is advised that information contained hereon reflects the Company's findings at the time of its intervention only and within the limits of Client's instructions, if any. The Company's sole responsibility is to its Client and this document does not exonerate parties to a transaction from exercising all their rights and obligations under the transaction documents. This document cannot be reproduced except in full, without prior written approval of the Company. Any unauthorized alteration, forgery or falsification of the content or appearance of this document is unlawful and offenders may be prosecuted to the fullest extent of the law. Unless otherwise stated the results shown in this test report refer only to the sample(s) tested.

Attention: To check the authenticity of testing/inspection report & certificate, please contact us at telephone: (86-755) 8307 1443, or email: [CN.Doccheck@sgs.com](mailto:CN.Doccheck@sgs.com)

Part No.	Part Description	Restricted Substances	Results of EDXRF <sup>(1)</sup>	Screening Result of PHTH <sup>(2)</sup>	Result of Wet Chemical Testing <sup>(3)</sup> (mg/kg)	Conclusion on EU RoHS	Sample Submitted / Resubmitted Date
51	GLA-1003-Copper-colored metal piece	Pb	BL	---	---	Comply	01 Jun 2021
		Cd	BL	---	---	Comply	
		Hg	BL	---	---	Comply	
		Cr(VI)▼	BL	---	---	Comply	
		PBBs	---	---	---	---	
		PBDEs	---	---	---	---	
		DBP	---	---	---	---	
		BBP	---	---	---	---	
		DEHP	---	---	---	---	
52	GLA-1003-Silvery metal piece	Pb	BL	---	---	Comply	01 Jun 2021
		Cd	BL	---	---	Comply	
		Hg	BL	---	---	Comply	
		Cr(VI)▼	BL	---	---	Comply	
		PBBs	---	---	---	---	
		PBDEs	---	---	---	---	
		DBP	---	---	---	---	
		BBP	---	---	---	---	
		DEHP	---	---	---	---	
53	GLA-1003-Silvery metal rod	Pb	BL	---	---	Comply	01 Jun 2021
		Cd	BL	---	---	Comply	
		Hg	BL	---	---	Comply	
		Cr(VI)▼	BL	---	---	Comply	
		PBBs	---	---	---	---	
		PBDEs	---	---	---	---	
		DBP	---	---	---	---	



Unless otherwise agreed in writing, this document is issued by the Company subject to its General Conditions of Service printed overleaf, available on request or accessible at <http://www.sgs.com/en/Terms-and-Conditions.aspx> and, for electronic format documents, subject to Terms and Conditions for Electronic Documents at <http://www.sgs.com/en/Terms-and-Conditions/Terms-e-Documents.aspx>. Attention is drawn to the limitation of liability, indemnification and jurisdiction issues defined therein. Any holder of this document is advised that information contained hereon reflects the Company's findings at the time of its intervention only and within the limits of Client's instructions, if any. The Company's sole responsibility is to its Client and this document does not exonerate parties to a transaction from exercising all their rights and obligations under the transaction documents. This document cannot be reproduced except in full, without prior written approval of the Company. Any unauthorized alteration, forgery or falsification of the content or appearance of this document is unlawful and offenders may be prosecuted to the fullest extent of the law. Unless otherwise stated the results shown in this test report refer only to the sample(s) tested.

Attention: To check the authenticity of testing/inspection report & certificate, please contact us at telephone: (86-755) 8307 1443, or email: [CN.Doccheck@sgs.com](mailto:CN.Doccheck@sgs.com)

Part No.	Part Description	Restricted Substances	Results of EDXRF <sup>(1)</sup>	Screening Result of PHTH <sup>(2)</sup>	Result of Wet Chemical Testing <sup>(3)</sup> (mg/kg)	Conclusion on EU RoHS	Sample Submitted / Resubmitted Date
		BBP DEHP DIBP	--- --- ---	--- --- ---	--- --- ---	--- --- ---	
54	GLA-1003-Black plastic jacket	Pb Cd Hg Cr(VI)▼ PBBs PBDEs DBP BBP DEHP DIBP	BL BL BL BL BL BL --- --- --- ---	--- --- --- --- --- --- BL BL BL BL	--- --- --- --- --- --- --- --- --- ---	Comply Comply Comply Comply Comply Comply Comply Comply Comply Comply	01 Jun 2021
55	GLA-1003-Black rubber lump	Pb Cd Hg Cr(VI)▼ PBBs PBDEs DBP BBP DEHP DIBP	BL BL BL BL BL BL --- --- --- ---	--- --- --- --- --- --- BL BL BL BL	--- --- --- --- --- --- --- --- --- ---	Comply Comply Comply Comply Comply Comply Comply Comply Comply Comply	01 Jun 2021



Unless otherwise agreed in writing, this document is issued by the Company subject to its General Conditions of Service printed overleaf, available on request or accessible at <http://www.sgs.com/en/Terms-and-Conditions.aspx> and, for electronic format documents, subject to Terms and Conditions for Electronic Documents at <http://www.sgs.com/en/Terms-and-Conditions/Terms-e-Documents.aspx>. Attention is drawn to the limitation of liability, indemnification and jurisdiction issues defined therein. Any holder of this document is advised that information contained hereon reflects the Company's findings at the time of its intervention only and within the limits of Client's instructions, if any. The Company's sole responsibility is to its Client and this document does not exonerate parties to a transaction from exercising all their rights and obligations under the transaction documents. This document cannot be reproduced except in full, without prior written approval of the Company. Any unauthorized alteration, forgery or falsification of the content or appearance of this document is unlawful and offenders may be prosecuted to the fullest extent of the law. Unless otherwise stated the results shown in this test report refer only to the sample(s) tested.

Attention: To check the authenticity of testing/inspection report & certificate, please contact us at telephone: (86-755) 8307 1443, or email: [CN.Doccheck@sgs.com](mailto:CN.Doccheck@sgs.com)

Part No.	Part Description	Restricted Substances	Results of EDXRF <sup>(1)</sup>	Screening Result of PHTH <sup>(2)</sup>	Result of Wet Chemical Testing <sup>(3)</sup> (mg/kg)	Conclusion on EU RoHS	Sample Submitted / Resubmitted Date
56	GLA-1003-Yellow plastic tape	Pb	BL	---	---	Comply	01 Jun 2021
		Cd	BL	---	---	Comply	
		Hg	BL	---	---	Comply	
		Cr(VI)▼	BL	---	---	Comply	
		PBBs	BL	---	---	Comply	
		PBDEs	BL	---	---	Comply	
		DBP	---	BL	---	Comply	
		BBP	---	BL	---	Comply	
		DEHP	---	BL	---	Comply	
DIBP	---	BL	---	Comply			
57	GLA-1003-Black plastic bracket	Pb	BL	---	---	Comply	01 Jun 2021
		Cd	BL	---	---	Comply	
		Hg	BL	---	---	Comply	
		Cr(VI)▼	BL	---	---	Comply	
		PBBs	BL	---	---	Comply	
		PBDEs	BL	---	---	Comply	
		DBP	---	BL	---	Comply	
		BBP	---	BL	---	Comply	
		DEHP	---	BL	---	Comply	
DIBP	---	BL	---	Comply			
58	GLA-1003-Black plastic shell	Pb	BL	---	---	Comply	01 Jun 2021
		Cd	BL	---	---	Comply	
		Hg	BL	---	---	Comply	
		Cr(VI)▼	BL	---	---	Comply	
		PBBs	BL	---	---	Comply	
		PBDEs	BL	---	---	Comply	
		DBP	---	BL	---	Comply	



Unless otherwise agreed in writing, this document is issued by the Company subject to its General Conditions of Service printed overleaf, available on request or accessible at <http://www.sgs.com/en/Terms-and-Conditions.aspx> and, for electronic format documents, subject to Terms and Conditions for Electronic Documents at <http://www.sgs.com/en/Terms-and-Conditions/Terms-e-Documents.aspx>. Attention is drawn to the limitation of liability, indemnification and jurisdiction issues defined therein. Any holder of this document is advised that information contained hereon reflects the Company's findings at the time of its intervention only and within the limits of Client's instructions, if any. The Company's sole responsibility is to its Client and this document does not exonerate parties to a transaction from exercising all their rights and obligations under the transaction documents. This document cannot be reproduced except in full, without prior written approval of the Company. Any unauthorized alteration, forgery or falsification of the content or appearance of this document is unlawful and offenders may be prosecuted to the fullest extent of the law. Unless otherwise stated the results shown in this test report refer only to the sample(s) tested.

Attention: To check the authenticity of testing / inspection report & certificate, please contact us at telephone: (86-755) 8307 1443, or email: [CN.Doccheck@sgs.com](mailto:CN.Doccheck@sgs.com)

Part No.	Part Description	Restricted Substances	Results of EDXRF <sup>(1)</sup>	Screening Result of PHTH <sup>(2)</sup>	Result of Wet Chemical Testing <sup>(3)</sup> (mg/kg)	Conclusion on EU RoHS	Sample Submitted / Resubmitted Date
		BBP	---	BL	---	Comply	
		DEHP	---	BL	---	Comply	
		DIBP	---	BL	---	Comply	
59	GLA-1003-Silvery metal piece	Pb	BL	---	---	Comply	01 Jun 2021
		Cd	BL	---	---	Comply	
		Hg	BL	---	---	Comply	
		Cr(VI)▼	BL	---	---	Comply	
		PBBs	---	---	---	---	
		PBDEs	---	---	---	---	
		DBP	---	---	---	---	
		BBP	---	---	---	---	
		DEHP	---	---	---	---	
		DIBP	---	---	---	---	
60	GLA-1003-Silvery metal piece	Pb	BL	---	---	Comply	01 Jun 2021
		Cd	BL	---	---	Comply	
		Hg	BL	---	---	Comply	
		Cr(VI)▼	BL	---	---	Comply	
		PBBs	---	---	---	---	
		PBDEs	---	---	---	---	
		DBP	---	---	---	---	
		BBP	---	---	---	---	
		DEHP	---	---	---	---	
		DIBP	---	---	---	---	



Unless otherwise agreed in writing, this document is issued by the Company subject to its General Conditions of Service printed overleaf, available on request or accessible at <http://www.sgs.com/en/Terms-and-Conditions.aspx> and, for electronic format documents, subject to Terms and Conditions for Electronic Documents at <http://www.sgs.com/en/Terms-and-Conditions/Terms-e-Documents.aspx>. Attention is drawn to the limitation of liability, indemnification and jurisdiction issues defined therein. Any holder of this document is advised that information contained hereon reflects the Company's findings at the time of its intervention only and within the limits of Client's instructions, if any. The Company's sole responsibility is to its Client and this document does not exonerate parties to a transaction from exercising all their rights and obligations under the transaction documents. This document cannot be reproduced except in full, without prior written approval of the Company. Any unauthorized alteration, forgery or falsification of the content or appearance of this document is unlawful and offenders may be prosecuted to the fullest extent of the law. Unless otherwise stated the results shown in this test report refer only to the sample(s) tested.

Attention: To check the authenticity of testing / inspection report & certificate, please contact us at telephone: (86-755) 8307 1443, or email: [CN.Doccheck@sgs.com](mailto:CN.Doccheck@sgs.com)

Part No.	Part Description	Restricted Substances	Results of EDXRF <sup>(1)</sup>	Screening Result of PHTH <sup>(2)</sup>	Result of Wet Chemical Testing <sup>(3)</sup> (mg/kg)	Conclusion on EU RoHS	Sample Submitted / Resubmitted Date
61	GLA-1003-Black solid adhesive	Pb	BL	---	---	Comply	01 Jun 2021
		Cd	BL	---	---	Comply	
		Hg	BL	---	---	Comply	
		Cr(VI)▼	BL	---	---	Comply	
		PBBs	BL	---	---	Comply	
		PBDEs	BL	---	---	Comply	
		DBP	---	BL	---	Comply	
		BBP	---	BL	---	Comply	
		DEHP	---	BL	---	Comply	
DIBP	---	BL	---	Comply			
62	GLA-1003-Black magnet ring	Pb	BL	---	---	Comply	01 Jun 2021
		Cd	BL	---	---	Comply	
		Hg	BL	---	---	Comply	
		Cr(VI)▼	BL	---	---	Comply	
		PBBs	BL	---	---	Comply	
		PBDEs	BL	---	---	Comply	
		DBP	---	BL	---	Comply	
		BBP	---	BL	---	Comply	
		DEHP	---	BL	---	Comply	
DIBP	---	BL	---	Comply			
63	GLA-1003-Green PCB body	Pb	BL	---	---	Comply	01 Jun 2021
		Cd	BL	---	---	Comply	
		Hg	BL	---	---	Comply	
		Cr(VI)▼	BL	---	---	Comply	
		PBBs	BL	---	ND	Comply	
		PBDEs	BL	---	ND	Comply	
		DBP	---	BL	---	Comply	



Unless otherwise agreed in writing, this document is issued by the Company subject to its General Conditions of Service printed overleaf, available on request or accessible at <http://www.sgs.com/en/Terms-and-Conditions.aspx> and, for electronic format documents, subject to Terms and Conditions for Electronic Documents at <http://www.sgs.com/en/Terms-and-Conditions/Terms-e-Documents.aspx>. Attention is drawn to the limitation of liability, indemnification and jurisdiction issues defined therein. Any holder of this document is advised that information contained hereon reflects the Company's findings at the time of its intervention only and within the limits of Client's instructions, if any. The Company's sole responsibility is to its Client and this document does not exonerate parties to a transaction from exercising all their rights and obligations under the transaction documents. This document cannot be reproduced except in full, without prior written approval of the Company. Any unauthorized alteration, forgery or falsification of the content or appearance of this document is unlawful and offenders may be prosecuted to the fullest extent of the law. Unless otherwise stated the results shown in this test report refer only to the sample(s) tested.

Attention: To check the authenticity of testing / inspection report & certificate, please contact us at telephone: (86-755) 8307 1443, or email: [CN.Doccheck@sgs.com](mailto:CN.Doccheck@sgs.com)

Part No.	Part Description	Restricted Substances	Results of EDXRF <sup>(1)</sup>	Screening Result of PHTH <sup>(2)</sup>	Result of Wet Chemical Testing <sup>(3)</sup> (mg/kg)	Conclusion on EU RoHS	Sample Submitted / Resubmitted Date
		BBP	---	BL	---	Comply	
		DEHP	---	BL	---	Comply	
		DIBP	---	BL	---	Comply	
64	GLA-1003-Yellow solid adhesive	Pb	BL	---	---	Comply	01 Jun 2021
		Cd	BL	---	---	Comply	
		Hg	BL	---	---	Comply	
		Cr(VI)▼	BL	---	---	Comply	
		PBBs	IN	---	ND	Comply	
		PBDEs	IN	---	ND	Comply	
		DBP	---	BL	---	Comply	
		BBP	---	BL	---	Comply	
		DEHP	---	BL	---	Comply	
		DIBP	---	BL	---	Comply	
65	GLA-1003-Yellow plastic shell	Pb	BL	---	---	Comply	01 Jun 2021
		Cd	BL	---	---	Comply	
		Hg	BL	---	---	Comply	
		Cr(VI)▼	BL	---	---	Comply	
		PBBs	IN	---	ND	Comply	
		PBDEs	IN	---	ND	Comply	
		DBP	---	BL	---	Comply	
		BBP	---	BL	---	Comply	
		DEHP	---	BL	---	Comply	
		DIBP	---	BL	---	Comply	



Unless otherwise agreed in writing, this document is issued by the Company subject to its General Conditions of Service printed overleaf, available on request or accessible at <http://www.sgs.com/en/Terms-and-Conditions.aspx> and, for electronic format documents, subject to Terms and Conditions for Electronic Documents at <http://www.sgs.com/en/Terms-and-Conditions/Terms-e-Documents.aspx>. Attention is drawn to the limitation of liability, indemnification and jurisdiction issues defined therein. Any holder of this document is advised that information contained hereon reflects the Company's findings at the time of its intervention only and within the limits of Client's instructions, if any. The Company's sole responsibility is to its Client and this document does not exonerate parties to a transaction from exercising all their rights and obligations under the transaction documents. This document cannot be reproduced except in full, without prior written approval of the Company. Any unauthorized alteration, forgery or falsification of the content or appearance of this document is unlawful and offenders may be prosecuted to the fullest extent of the law. Unless otherwise stated the results shown in this test report refer only to the sample(s) tested.

Attention: To check the authenticity of testing/inspection report & certificate, please contact us at telephone: (86-755) 8307 1443, or email: [CN.Doccheck@sgs.com](mailto:CN.Doccheck@sgs.com)

Part No.	Part Description	Restricted Substances	Results of EDXRF <sup>(1)</sup>	Screening Result of PHTH <sup>(2)</sup>	Result of Wet Chemical Testing <sup>(3)</sup> (mg/kg)	Conclusion on EU RoHS	Sample Submitted / Resubmitted Date
66	GLA-1003-Blue capacitor body	Pb	BL	---	---	Comply	01 Jun 2021
		Cd	BL	---	---	Comply	
		Hg	BL	---	---	Comply	
		Cr(VI)▼	BL	---	---	Comply	
		PBBs	BL	---	---	Comply	
		PBDEs	BL	---	---	Comply	
		DBP	---	BL	---	Comply	
		BBP	---	BL	---	Comply	
		DEHP	---	BL	---	Comply	
DIBP	---	BL	---	Comply			
67	GLA-1003-Black audion body	Pb	BL	---	---	Comply	01 Jun 2021 23 Jun 2021
		Cd	BL	---	---	Comply	
		Hg	BL	---	---	Comply	
		Cr(VI)▼	BL	---	---	Comply	
		PBBs	BL	---	---	Comply	
		PBDEs	BL	---	---	Comply	
		DBP	---	BL	---	Comply	
		BBP	---	BL	---	Comply	
		DEHP	---	BL	---	Comply	
DIBP	---	BL	---	Comply			
68	GLA-1003-Black diode body	Pb	BL	---	---	Comply	01 Jun 2021
		Cd	BL	---	---	Comply	
		Hg	BL	---	---	Comply	
		Cr(VI)▼	BL	---	---	Comply	
		PBBs	IN	---	ND	Comply	
		PBDEs	IN	---	ND	Comply	
		DBP	---	BL	---	Comply	



Unless otherwise agreed in writing, this document is issued by the Company subject to its General Conditions of Service printed overleaf, available on request or accessible at <http://www.sgs.com/en/Terms-and-Conditions.aspx> and, for electronic format documents, subject to Terms and Conditions for Electronic Documents at <http://www.sgs.com/en/Terms-and-Conditions/Terms-e-Documents.aspx>. Attention is drawn to the limitation of liability, indemnification and jurisdiction issues defined therein. Any holder of this document is advised that information contained hereon reflects the Company's findings at the time of its intervention only and within the limits of Client's instructions, if any. The Company's sole responsibility is to its Client and this document does not exonerate parties to a transaction from exercising all their rights and obligations under the transaction documents. This document cannot be reproduced except in full, without prior written approval of the Company. Any unauthorized alteration, forgery or falsification of the content or appearance of this document is unlawful and offenders may be prosecuted to the fullest extent of the law. Unless otherwise stated the results shown in this test report refer only to the sample(s) tested.

Attention: To check the authenticity of testing / inspection report & certificate, please contact us at telephone: (86-755) 8307 1443, or email: [CN.Doccheck@sgs.com](mailto:CN.Doccheck@sgs.com)

Part No.	Part Description	Restricted Substances	Results of EDXRF <sup>(1)</sup>	Screening Result of PHTH <sup>(2)</sup>	Result of Wet Chemical Testing <sup>(3)</sup> (mg/kg)	Conclusion on EU RoHS	Sample Submitted / Resubmitted Date
		BBP	---	BL	---	Comply	
		DEHP	---	BL	---	Comply	
		DIBP	---	BL	---	Comply	
69	GLA-1003-Black rectifier bridge body	Pb	BL	---	---	Comply	01 Jun 2021
		Cd	BL	---	---	Comply	
		Hg	BL	---	---	Comply	
		Cr(VI)▼	BL	---	---	Comply	
		PBBs	BL	---	---	Comply	
		PBDEs	BL	---	---	Comply	
		DBP	---	BL	---	Comply	
		BBP	---	BL	---	Comply	
		DEHP	---	BL	---	Comply	
		DIBP	---	BL	---	Comply	
70	GLA-1003-Black audion body	Pb	BL	---	---	Comply	01 Jun 2021
		Cd	BL	---	---	Comply	
		Hg	BL	---	---	Comply	
		Cr(VI)▼	BL	---	---	Comply	
		PBBs	BL	---	---	Comply	
		PBDEs	BL	---	---	Comply	
		DBP	---	BL	---	Comply	
		BBP	---	BL	---	Comply	
		DEHP	---	BL	---	Comply	
		DIBP	---	BL	---	Comply	



Unless otherwise agreed in writing, this document is issued by the Company subject to its General Conditions of Service printed overleaf, available on request or accessible at <http://www.sgs.com/en/Terms-and-Conditions.aspx> and, for electronic format documents, subject to Terms and Conditions for Electronic Documents at <http://www.sgs.com/en/Terms-and-Conditions/Terms-e-Documents.aspx>. Attention is drawn to the limitation of liability, indemnification and jurisdiction issues defined therein. Any holder of this document is advised that information contained hereon reflects the Company's findings at the time of its intervention only and within the limits of Client's instructions, if any. The Company's sole responsibility is to its Client and this document does not exonerate parties to a transaction from exercising all their rights and obligations under the transaction documents. This document cannot be reproduced except in full, without prior written approval of the Company. Any unauthorized alteration, forgery or falsification of the content or appearance of this document is unlawful and offenders may be prosecuted to the fullest extent of the law. Unless otherwise stated the results shown in this test report refer only to the sample(s) tested.

Attention: To check the authenticity of testing/inspection report & certificate, please contact us at telephone: (86-755) 8307 1443, or email: [CN.Doccheck@sgs.com](mailto:CN.Doccheck@sgs.com)

Part No.	Part Description	Restricted Substances	Results of EDXRF <sup>(1)</sup>	Screening Result of PHTH <sup>(2)</sup>	Result of Wet Chemical Testing <sup>(3)</sup> (mg/kg)	Conclusion on EU RoHS	Sample Submitted / Resubmitted Date
71	GLA-1003-Green PCB body	Pb	BL	---	---	Comply	01 Jun 2021
		Cd	BL	---	---	Comply	
		Hg	BL	---	---	Comply	
		Cr(VI)▼	BL	---	---	Comply	
		PBBs	IN	---	ND	Comply	
		PBDEs	IN	---	ND	Comply	
		DBP	---	BL	---	Comply	
		BBP	---	BL	---	Comply	
		DEHP	---	BL	---	Comply	
DIBP	---	BL	---	Comply			
72	GLA-1003-Silvery metal soldering tin	Pb	BL	---	---	Comply	01 Jun 2021
		Cd	BL	---	---	Comply	
		Hg	BL	---	---	Comply	
		Cr(VI)▼	BL	---	---	Comply	
		PBBs	---	---	---	---	
		PBDEs	---	---	---	---	
		DBP	---	---	---	---	
		BBP	---	---	---	---	
		DEHP	---	---	---	---	
DIBP	---	---	---	---			
73	GLA-1003-Black fibre wire	Pb	BL	---	---	Comply	01 Jun 2021
		Cd	BL	---	---	Comply	
		Hg	BL	---	---	Comply	
		Cr(VI)▼	BL	---	---	Comply	
		PBBs	BL	---	---	Comply	
		PBDEs	BL	---	---	Comply	
		DBP	---	BL	---	Comply	



Unless otherwise agreed in writing, this document is issued by the Company subject to its General Conditions of Service printed overleaf, available on request or accessible at <http://www.sgs.com/en/Terms-and-Conditions.aspx> and, for electronic format documents, subject to Terms and Conditions for Electronic Documents at <http://www.sgs.com/en/Terms-and-Conditions/Terms-e-Documents.aspx>. Attention is drawn to the limitation of liability, indemnification and jurisdiction issues defined therein. Any holder of this document is advised that information contained hereon reflects the Company's findings at the time of its intervention only and within the limits of Client's instructions, if any. The Company's sole responsibility is to its Client and this document does not exonerate parties to a transaction from exercising all their rights and obligations under the transaction documents. This document cannot be reproduced except in full, without prior written approval of the Company. Any unauthorized alteration, forgery or falsification of the content or appearance of this document is unlawful and offenders may be prosecuted to the fullest extent of the law. Unless otherwise stated the results shown in this test report refer only to the sample(s) tested.

Attention: To check the authenticity of testing/inspection report & certificate, please contact us at telephone: (86-755) 8307 1443, or email: [CN.Doccheck@sgs.com](mailto:CN.Doccheck@sgs.com)

Part No.	Part Description	Restricted Substances	Results of EDXRF <sup>(1)</sup>	Screening Result of PHTH <sup>(2)</sup>	Result of Wet Chemical Testing <sup>(3)</sup> (mg/kg)	Conclusion on EU RoHS	Sample Submitted / Resubmitted Date
		BBP	---	BL	---	Comply	
		DEHP	---	BL	---	Comply	
		DIBP	---	BL	---	Comply	
74	GLA-1003-Brown fibre wire	Pb	BL	---	---	Comply	01 Jun 2021
		Cd	BL	---	---	Comply	
		Hg	BL	---	---	Comply	
		Cr(VI)▼	BL	---	---	Comply	
		PBBs	BL	---	---	Comply	
		PBDEs	BL	---	---	Comply	
		DBP	---	BL	---	Comply	
		BBP	---	BL	---	Comply	
		DEHP	---	BL	---	Comply	
		DIBP	---	BL	---	Comply	
75	GLA-1003-Gray plastic piece	Pb	BL	---	---	Comply	01 Jun 2021
		Cd	BL	---	---	Comply	
		Hg	BL	---	---	Comply	
		Cr(VI)▼	BL	---	---	Comply	
		PBBs	BL	---	---	Comply	
		PBDEs	BL	---	---	Comply	
		DBP	---	BL	---	Comply	
		BBP	---	BL	---	Comply	
		DEHP	---	BL	---	Comply	
		DIBP	---	BL	---	Comply	



Unless otherwise agreed in writing, this document is issued by the Company subject to its General Conditions of Service printed overleaf, available on request or accessible at <http://www.sgs.com/en/Terms-and-Conditions.aspx> and, for electronic format documents, subject to Terms and Conditions for Electronic Documents at <http://www.sgs.com/en/Terms-and-Conditions/Terms-e-Documents.aspx>. Attention is drawn to the limitation of liability, indemnification and jurisdiction issues defined therein. Any holder of this document is advised that information contained hereon reflects the Company's findings at the time of its intervention only and within the limits of Client's instructions, if any. The Company's sole responsibility is to its Client and this document does not exonerate parties to a transaction from exercising all their rights and obligations under the transaction documents. This document cannot be reproduced except in full, without prior written approval of the Company. Any unauthorized alteration, forgery or falsification of the content or appearance of this document is unlawful and offenders may be prosecuted to the fullest extent of the law. Unless otherwise stated the results shown in this test report refer only to the sample(s) tested.

Attention: To check the authenticity of testing / inspection report & certificate, please contact us at telephone: (86-755) 8307 1443, or email: [CN.Doccheck@sgs.com](mailto:CN.Doccheck@sgs.com)

Part No.	Part Description	Restricted Substances	Results of EDXRF <sup>(1)</sup>	Screening Result of PHTH <sup>(2)</sup>	Result of Wet Chemical Testing <sup>(3)</sup> (mg/kg)	Conclusion on EU RoHS	Sample Submitted / Resubmitted Date
76	GLA-1003-Silvery metal piece	Pb	BL	---	---	Comply	01 Jun 2021
		Cd	BL	---	---	Comply	
		Hg	BL	---	---	Comply	
		Cr(VI)▼	BL	---	---	Comply	
		PBBs	---	---	---	---	
		PBDEs	---	---	---	---	
		DBP	---	---	---	---	
		BBP	---	---	---	---	
		DEHP	---	---	---	---	
77	GLA-1003-Silvery metal rod	Pb	BL	---	---	Comply	01 Jun 2021
		Cd	BL	---	---	Comply	
		Hg	BL	---	---	Comply	
		Cr(VI)▼	BL	---	---	Comply	
		PBBs	---	---	---	---	
		PBDEs	---	---	---	---	
		DBP	---	---	---	---	
		BBP	---	---	---	---	
		DEHP	---	---	---	---	
78	GLA-1003-Silvery metal spring	Pb	BL	---	---	Comply	01 Jun 2021
		Cd	BL	---	---	Comply	
		Hg	BL	---	---	Comply	
		Cr(VI)▼	IN	---	ND	Comply	
		PBBs	---	---	---	---	
		PBDEs	---	---	---	---	
		DBP	---	---	---	---	



Unless otherwise agreed in writing, this document is issued by the Company subject to its General Conditions of Service printed overleaf, available on request or accessible at <http://www.sgs.com/en/Terms-and-Conditions.aspx> and, for electronic format documents, subject to Terms and Conditions for Electronic Documents at <http://www.sgs.com/en/Terms-and-Conditions/Terms-e-Documents.aspx>. Attention is drawn to the limitation of liability, indemnification and jurisdiction issues defined therein. Any holder of this document is advised that information contained hereon reflects the Company's findings at the time of its intervention only and within the limits of Client's instructions, if any. The Company's sole responsibility is to its Client and this document does not exonerate parties to a transaction from exercising all their rights and obligations under the transaction documents. This document cannot be reproduced except in full, without prior written approval of the Company. Any unauthorized alteration, forgery or falsification of the content or appearance of this document is unlawful and offenders may be prosecuted to the fullest extent of the law. Unless otherwise stated the results shown in this test report refer only to the sample(s) tested.

Attention: To check the authenticity of testing/inspection report & certificate, please contact us at telephone: (86-755) 8307 1443, or email: [CN.Doccheck@sgs.com](mailto:CN.Doccheck@sgs.com)

Part No.	Part Description	Restricted Substances	Results of EDXRF <sup>(1)</sup>	Screening Result of PHTH <sup>(2)</sup>	Result of Wet Chemical Testing <sup>(3)</sup> (mg/kg)	Conclusion on EU RoHS	Sample Submitted / Resubmitted Date
		BBP DEHP DIBP	--- --- ---	--- --- ---	--- --- ---	--- --- ---	
79	GLA-1003-White fibre wire	Pb Cd Hg Cr(VI)▼ PBBs PBDEs DBP BBP DEHP DIBP	BL BL BL BL BL BL --- --- --- ---	--- --- --- --- --- --- BL BL BL BL	--- --- --- --- --- --- --- --- --- ---	Comply Comply Comply Comply Comply Comply Comply Comply Comply Comply	01 Jun 2021
80	GLA-1003-Silvery metal piece	Pb Cd Hg Cr(VI)▼ PBBs PBDEs DBP BBP DEHP DIBP	BL BL BL BL --- --- --- --- --- ---	--- --- --- --- --- --- --- --- --- ---	--- --- --- --- --- --- --- --- --- ---	Comply Comply Comply Comply --- --- --- --- --- ---	01 Jun 2021



Unless otherwise agreed in writing, this document is issued by the Company subject to its General Conditions of Service printed overleaf, available on request or accessible at <http://www.sgs.com/en/Terms-and-Conditions.aspx> and, for electronic format documents, subject to Terms and Conditions for Electronic Documents at <http://www.sgs.com/en/Terms-and-Conditions/Terms-e-Documents.aspx>. Attention is drawn to the limitation of liability, indemnification and jurisdiction issues defined therein. Any holder of this document is advised that information contained hereon reflects the Company's findings at the time of its intervention only and within the limits of Client's instructions, if any. The Company's sole responsibility is to its Client and this document does not exonerate parties to a transaction from exercising all their rights and obligations under the transaction documents. This document cannot be reproduced except in full, without prior written approval of the Company. Any unauthorized alteration, forgery or falsification of the content or appearance of this document is unlawful and offenders may be prosecuted to the fullest extent of the law. Unless otherwise stated the results shown in this test report refer only to the sample(s) tested.

Attention: To check the authenticity of testing/inspection report & certificate, please contact us at telephone: (86-755) 8307 1443, or email: [CN.Doccheck@sgs.com](mailto:CN.Doccheck@sgs.com)

Part No.	Part Description	Restricted Substances	Results of EDXRF <sup>(1)</sup>	Screening Result of PHTH <sup>(2)</sup>	Result of Wet Chemical Testing <sup>(3)</sup> (mg/kg)	Conclusion on EU RoHS	Sample Submitted / Resubmitted Date
81	GLA-1003-Silvery metal rod	Pb	BL	---	---	Comply	01 Jun 2021
		Cd	BL	---	---	Comply	
		Hg	BL	---	---	Comply	
		Cr(VI)▼	BL	---	---	Comply	
		PBBs	---	---	---	---	
		PBDEs	---	---	---	---	
		DBP	---	---	---	---	
		BBP	---	---	---	---	
		DEHP	---	---	---	---	
82	GLA-1003-Silvery metal pipe	Pb	BL	---	---	Comply	01 Jun 2021
		Cd	BL	---	---	Comply	
		Hg	BL	---	---	Comply	
		Cr(VI)▼	IN	---	ND	Comply	
		PBBs	---	---	---	---	
		PBDEs	---	---	---	---	
		DBP	---	---	---	---	
		BBP	---	---	---	---	
		DEHP	---	---	---	---	
83	GLA-1003-White powder	Pb	BL	---	---	Comply	01 Jun 2021
		Cd	BL	---	---	Comply	
		Hg	BL	---	---	Comply	
		Cr(VI)▼	BL	---	---	Comply	
		PBBs	BL	---	---	Comply	
		PBDEs	BL	---	---	Comply	
		DBP	---	BL	---	Comply	



Unless otherwise agreed in writing, this document is issued by the Company subject to its General Conditions of Service printed overleaf, available on request or accessible at <http://www.sgs.com/en/Terms-and-Conditions.aspx> and, for electronic format documents, subject to Terms and Conditions for Electronic Documents at <http://www.sgs.com/en/Terms-and-Conditions/Terms-e-Documents.aspx>. Attention is drawn to the limitation of liability, indemnification and jurisdiction issues defined therein. Any holder of this document is advised that information contained hereon reflects the Company's findings at the time of its intervention only and within the limits of Client's instructions, if any. The Company's sole responsibility is to its Client and this document does not exonerate parties to a transaction from exercising all their rights and obligations under the transaction documents. This document cannot be reproduced except in full, without prior written approval of the Company. Any unauthorized alteration, forgery or falsification of the content or appearance of this document is unlawful and offenders may be prosecuted to the fullest extent of the law. Unless otherwise stated the results shown in this test report refer only to the sample(s) tested.

Attention: To check the authenticity of testing/inspection report & certificate, please contact us at telephone: (86-755) 8307 1443, or email: [CN.Doccheck@sgs.com](mailto:CN.Doccheck@sgs.com)

Part No.	Part Description	Restricted Substances	Results of EDXRF <sup>(1)</sup>	Screening Result of PHTH <sup>(2)</sup>	Result of Wet Chemical Testing <sup>(3)</sup> (mg/kg)	Conclusion on EU RoHS	Sample Submitted / Resubmitted Date
		BBP	---	BL	---	Comply	
		DEHP	---	BL	---	Comply	
		DIBP	---	BL	---	Comply	
84	GLA-1003-Silvery metal nut	Pb	BL	---	---	Comply	01 Jun 2021
		Cd	BL	---	---	Comply	
		Hg	BL	---	---	Comply	
		Cr(VI)▼	IN	---	ND	Comply	
		PBBs	---	---	---	---	
		PBDEs	---	---	---	---	
		DBP	---	---	---	---	
		BBP	---	---	---	---	
		DEHP	---	---	---	---	
		DIBP	---	---	---	---	
85	GLA-1003-Silvery metal washer	Pb	BL	---	---	Comply	01 Jun 2021
		Cd	BL	---	---	Comply	
		Hg	BL	---	---	Comply	
		Cr(VI)▼	IN	---	ND	Comply	
		PBBs	---	---	---	---	
		PBDEs	---	---	---	---	
		DBP	---	---	---	---	
		BBP	---	---	---	---	
		DEHP	---	---	---	---	
		DIBP	---	---	---	---	



Unless otherwise agreed in writing, this document is issued by the Company subject to its General Conditions of Service printed overleaf, available on request or accessible at <http://www.sgs.com/en/Terms-and-Conditions.aspx> and, for electronic format documents, subject to Terms and Conditions for Electronic Documents at <http://www.sgs.com/en/Terms-and-Conditions/Terms-e-Documents.aspx>. Attention is drawn to the limitation of liability, indemnification and jurisdiction issues defined therein. Any holder of this document is advised that information contained hereon reflects the Company's findings at the time of its intervention only and within the limits of Client's instructions, if any. The Company's sole responsibility is to its Client and this document does not exonerate parties to a transaction from exercising all their rights and obligations under the transaction documents. This document cannot be reproduced except in full, without prior written approval of the Company. Any unauthorized alteration, forgery or falsification of the content or appearance of this document is unlawful and offenders may be prosecuted to the fullest extent of the law. Unless otherwise stated the results shown in this test report refer only to the sample(s) tested.

Attention: To check the authenticity of testing / inspection report & certificate, please contact us at telephone: (86-755) 8307 1443, or email: [CN.Doccheck@sgs.com](mailto:CN.Doccheck@sgs.com)

Part No.	Part Description	Restricted Substances	Results of EDXRF <sup>(1)</sup>	Screening Result of PHTH <sup>(2)</sup>	Result of Wet Chemical Testing <sup>(3)</sup> (mg/kg)	Conclusion on EU RoHS	Sample Submitted / Resubmitted Date
86	GLA-1003-Silvery metal washer	Pb	BL	---	---	Comply	01 Jun 2021
		Cd	BL	---	---	Comply	
		Hg	BL	---	---	Comply	
		Cr(VI)▼	IN	---	ND	Comply	
		PBBs	---	---	---	---	
		PBDEs	---	---	---	---	
		DBP	---	---	---	---	
		BBP	---	---	---	---	
		DEHP	---	---	---	---	
87	GLA-1003-Silvery metal piece	Pb	BL	---	---	Comply	01 Jun 2021
		Cd	BL	---	---	Comply	
		Hg	BL	---	---	Comply	
		Cr(VI)▼	BL	---	---	Comply	
		PBBs	---	---	---	---	
		PBDEs	---	---	---	---	
		DBP	---	---	---	---	
		BBP	---	---	---	---	
		DEHP	---	---	---	---	
88	GLA-1003-Silvery metal lump	Pb	OL	---	67	Comply	01 Jun 2021
		Cd	BL	---	---	Comply	
		Hg	BL	---	---	Comply	
		Cr(VI)▼	BL	---	---	Comply	
		PBBs	---	---	---	---	
		PBDEs	---	---	---	---	
		DBP	---	---	---	---	



Unless otherwise agreed in writing, this document is issued by the Company subject to its General Conditions of Service printed overleaf, available on request or accessible at <http://www.sgs.com/en/Terms-and-Conditions.aspx> and, for electronic format documents, subject to Terms and Conditions for Electronic Documents at <http://www.sgs.com/en/Terms-and-Conditions/Terms-e-Documents.aspx>. Attention is drawn to the limitation of liability, indemnification and jurisdiction issues defined therein. Any holder of this document is advised that information contained hereon reflects the Company's findings at the time of its intervention only and within the limits of Client's instructions, if any. The Company's sole responsibility is to its Client and this document does not exonerate parties to a transaction from exercising all their rights and obligations under the transaction documents. This document cannot be reproduced except in full, without prior written approval of the Company. Any unauthorized alteration, forgery or falsification of the content or appearance of this document is unlawful and offenders may be prosecuted to the fullest extent of the law. Unless otherwise stated the results shown in this test report refer only to the sample(s) tested.

Attention: To check the authenticity of testing/inspection report & certificate, please contact us at telephone: (86-755) 8307 1443, or email: [CN.Doccheck@sgs.com](mailto:CN.Doccheck@sgs.com)

Part No.	Part Description	Restricted Substances	Results of EDXRF <sup>(1)</sup>	Screening Result of PHTH <sup>(2)</sup>	Result of Wet Chemical Testing <sup>(3)</sup> (mg/kg)	Conclusion on EU RoHS	Sample Submitted / Resubmitted Date
		BBP DEHP DIBP	--- --- ---	--- --- ---	--- --- ---	--- --- ---	
89	GLA-1003-Silvery metal screw	Pb Cd Hg Cr(VI)▼ PBBs PBDEs DBP BBP DEHP DIBP	BL BL BL IN --- --- --- --- --- ---	--- --- --- --- --- --- --- --- --- ---	--- --- --- ND --- --- --- --- --- ---	Comply Comply Comply Comply --- --- --- --- --- ---	01 Jun 2021
90	GLA-1003-Silvery metal screw	Pb Cd Hg Cr(VI)▼ PBBs PBDEs DBP BBP DEHP DIBP	BL BL BL BL --- --- --- --- --- ---	--- --- --- --- --- --- --- --- --- ---	--- --- --- --- --- --- --- --- --- ---	Comply Comply Comply Comply --- --- --- --- --- ---	01 Jun 2021



Unless otherwise agreed in writing, this document is issued by the Company subject to its General Conditions of Service printed overleaf, available on request or accessible at <http://www.sgs.com/en/Terms-and-Conditions.aspx> and, for electronic format documents, subject to Terms and Conditions for Electronic Documents at <http://www.sgs.com/en/Terms-and-Conditions/Terms-e-Documents.aspx>. Attention is drawn to the limitation of liability, indemnification and jurisdiction issues defined therein. Any holder of this document is advised that information contained hereon reflects the Company's findings at the time of its intervention only and within the limits of Client's instructions, if any. The Company's sole responsibility is to its Client and this document does not exonerate parties to a transaction from exercising all their rights and obligations under the transaction documents. This document cannot be reproduced except in full, without prior written approval of the Company. Any unauthorized alteration, forgery or falsification of the content or appearance of this document is unlawful and offenders may be prosecuted to the fullest extent of the law. Unless otherwise stated the results shown in this test report refer only to the sample(s) tested.

Attention: To check the authenticity of testing / inspection report & certificate, please contact us at telephone: (86-755) 8307 1443, or email: [CN.Doccheck@sgs.com](mailto:CN.Doccheck@sgs.com)

Part No.	Part Description	Restricted Substances	Results of EDXRF <sup>(1)</sup>	Screening Result of PHTH <sup>(2)</sup>	Result of Wet Chemical Testing <sup>(3)</sup> (mg/kg)	Conclusion on EU RoHS	Sample Submitted / Resubmitted Date
91	GLA-1003-Silvery metal shell	Pb	OL	---	344	Comply	01 Jun 2021
		Cd	BL	---	---	Comply	
		Hg	BL	---	---	Comply	
		Cr(VI)▼	BL	---	---	Comply	
		PBBs	---	---	---	---	
		PBDEs	---	---	---	---	
		DBP	---	---	---	---	
		BBP	---	---	---	---	
		DEHP	---	---	---	---	
		DIBP	---	---	---	---	
92	GLA-1003-Golden metal ball	Pb	BL	---	---	Comply	01 Jun 2021
		Cd	BL	---	---	Comply	
		Hg	BL	---	---	Comply	
		Cr(VI)▼	BL	---	---	Comply	
		PBBs	---	---	---	---	
		PBDEs	---	---	---	---	
		DBP	---	---	---	---	
		BBP	---	---	---	---	
		DEHP	---	---	---	---	
		DIBP	---	---	---	---	
93	GLA-1003-Silvery metal piece	Pb	BL	---	---	Comply	01 Jun 2021
		Cd	BL	---	---	Comply	
		Hg	BL	---	---	Comply	
		Cr(VI)▼	IN	---	ND	Comply	
		PBBs	---	---	---	---	
		PBDEs	---	---	---	---	
		DBP	---	---	---	---	



Unless otherwise agreed in writing, this document is issued by the Company subject to its General Conditions of Service printed overleaf, available on request or accessible at <http://www.sgs.com/en/Terms-and-Conditions.aspx> and, for electronic format documents, subject to Terms and Conditions for Electronic Documents at <http://www.sgs.com/en/Terms-and-Conditions/Terms-e-Documents.aspx>. Attention is drawn to the limitation of liability, indemnification and jurisdiction issues defined therein. Any holder of this document is advised that information contained hereon reflects the Company's findings at the time of its intervention only and within the limits of Client's instructions, if any. The Company's sole responsibility is to its Client and this document does not exonerate parties to a transaction from exercising all their rights and obligations under the transaction documents. This document cannot be reproduced except in full, without prior written approval of the Company. Any unauthorized alteration, forgery or falsification of the content or appearance of this document is unlawful and offenders may be prosecuted to the fullest extent of the law. Unless otherwise stated the results shown in this test report refer only to the sample(s) tested.

Attention: To check the authenticity of testing/inspection report & certificate, please contact us at telephone: (86-755) 8307 1443, or email: [CN.Doccheck@sgs.com](mailto:CN.Doccheck@sgs.com)

Part No.	Part Description	Restricted Substances	Results of EDXRF <sup>(1)</sup>	Screening Result of PHTH <sup>(2)</sup>	Result of Wet Chemical Testing <sup>(3)</sup> (mg/kg)	Conclusion on EU RoHS	Sample Submitted / Resubmitted Date
		BBP DEHP DIBP	--- --- ---	--- --- ---	--- --- ---	--- --- ---	
94	GLA-1003-Yellow plastic ring	Pb Cd Hg Cr(VI)▼ PBBs PBDEs DBP BBP DEHP DIBP	BL BL BL BL BL BL --- --- --- ---	--- --- --- --- --- --- BL BL BL BL	--- --- --- --- --- --- --- --- --- ---	Comply Comply Comply Comply Comply Comply Comply Comply Comply Comply	01 Jun 2021
95	GLA-1003-White fibre tape	Pb Cd Hg Cr(VI)▼ PBBs PBDEs DBP BBP DEHP DIBP	BL BL BL BL BL BL --- --- --- ---	--- --- --- --- --- --- BL BL BL BL	--- --- --- --- --- --- --- --- --- ---	Comply Comply Comply Comply Comply Comply Comply Comply Comply Comply	01 Jun 2021



Unless otherwise agreed in writing, this document is issued by the Company subject to its General Conditions of Service printed overleaf, available on request or accessible at <http://www.sgs.com/en/Terms-and-Conditions.aspx> and, for electronic format documents, subject to Terms and Conditions for Electronic Documents at <http://www.sgs.com/en/Terms-and-Conditions/Terms-e-Documents.aspx>. Attention is drawn to the limitation of liability, indemnification and jurisdiction issues defined therein. Any holder of this document is advised that information contained hereon reflects the Company's findings at the time of its intervention only and within the limits of Client's instructions, if any. The Company's sole responsibility is to its Client and this document does not exonerate parties to a transaction from exercising all their rights and obligations under the transaction documents. This document cannot be reproduced except in full, without prior written approval of the Company. Any unauthorized alteration, forgery or falsification of the content or appearance of this document is unlawful and offenders may be prosecuted to the fullest extent of the law. Unless otherwise stated the results shown in this test report refer only to the sample(s) tested.

Attention: To check the authenticity of testing/inspection report & certificate, please contact us at telephone: (86-755) 8307 1443, or email: [CN.Doccheck@sgs.com](mailto:CN.Doccheck@sgs.com)

Part No.	Part Description	Restricted Substances	Results of EDXRF <sup>(1)</sup>	Screening Result of PHTH <sup>(2)</sup>	Result of Wet Chemical Testing <sup>(3)</sup> (mg/kg)	Conclusion on EU RoHS	Sample Submitted / Resubmitted Date
96	GLA-1003-White plastic shell	Pb	BL	---	---	Comply	01 Jun 2021
		Cd	BL	---	---	Comply	
		Hg	BL	---	---	Comply	
		Cr(VI)▼	BL	---	---	Comply	
		PBBs	BL	---	---	Comply	
		PBDEs	BL	---	---	Comply	
		DBP	---	BL	---	Comply	
		BBP	---	BL	---	Comply	
		DEHP	---	BL	---	Comply	
		DIBP	---	BL	---	Comply	
97	GLA-1003-Copper-colored metal rod	Pb	BL	---	---	Comply	01 Jun 2021
		Cd	BL	---	---	Comply	
		Hg	BL	---	---	Comply	
		Cr(VI)▼	BL	---	---	Comply	
		PBBs	---	---	---	---	
		PBDEs	---	---	---	---	
		DBP	---	---	---	---	
		BBP	---	---	---	---	
		DEHP	---	---	---	---	
		DIBP	---	---	---	---	
98	GLA-1003-Black plastic washer	Pb	BL	---	---	Comply	01 Jun 2021
		Cd	BL	---	---	Comply	
		Hg	BL	---	---	Comply	
		Cr(VI)▼	BL	---	---	Comply	
		PBBs	BL	---	---	Comply	
		PBDEs	BL	---	---	Comply	
		DBP	---	BL	---	Comply	



Unless otherwise agreed in writing, this document is issued by the Company subject to its General Conditions of Service printed overleaf, available on request or accessible at <http://www.sgs.com/en/Terms-and-Conditions.aspx> and, for electronic format documents, subject to Terms and Conditions for Electronic Documents at <http://www.sgs.com/en/Terms-and-Conditions/Terms-e-Document.aspx>. Attention is drawn to the limitation of liability, indemnification and jurisdiction issues defined therein. Any holder of this document is advised that information contained hereon reflects the Company's findings at the time of its intervention only and within the limits of Client's instructions, if any. The Company's sole responsibility is to its Client and this document does not exonerate parties to a transaction from exercising all their rights and obligations under the transaction documents. This document cannot be reproduced except in full, without prior written approval of the Company. Any unauthorized alteration, forgery or falsification of the content or appearance of this document is unlawful and offenders may be prosecuted to the fullest extent of the law. Unless otherwise stated the results shown in this test report refer only to the sample(s) tested.

Attention: To check the authenticity of testing/inspection report & certificate, please contact us at telephone: (86-755) 8307 1443, or email: [CN.Doccheck@sgs.com](mailto:CN.Doccheck@sgs.com)

Part No.	Part Description	Restricted Substances	Results of EDXRF <sup>(1)</sup>	Screening Result of PHTH <sup>(2)</sup>	Result of Wet Chemical Testing <sup>(3)</sup> (mg/kg)	Conclusion on EU RoHS	Sample Submitted / Resubmitted Date
		BBP	---	BL	---	Comply	
		DEHP	---	BL	---	Comply	
		DIBP	---	BL	---	Comply	
99	GLA-1003-Black metal hoop	Pb	BL	---	---	Comply	01 Jun 2021
		Cd	BL	---	---	Comply	
		Hg	BL	---	---	Comply	
		Cr(VI)▼	IN	---	ND	Comply	
		PBBs	---	---	---	---	
		PBDEs	---	---	---	---	
		DBP	---	---	---	---	
		BBP	---	---	---	---	
		DEHP	---	---	---	---	
		DIBP	---	---	---	---	
100	GLA-1003-Beige plastic lump	Pb	BL	---	---	Comply	01 Jun 2021
		Cd	BL	---	---	Comply	
		Hg	BL	---	---	Comply	
		Cr(VI)▼	BL	---	---	Comply	
		PBBs	IN	---	ND	Comply	
		PBDEs	IN	---	ND	Comply	
		DBP	---	BL	---	Comply	
		BBP	---	BL	---	Comply	
		DEHP	---	BL	---	Comply	
		DIBP	---	BL	---	Comply	



Unless otherwise agreed in writing, this document is issued by the Company subject to its General Conditions of Service printed overleaf, available on request or accessible at <http://www.sgs.com/en/Terms-and-Conditions.aspx> and, for electronic format documents, subject to Terms and Conditions for Electronic Documents at <http://www.sgs.com/en/Terms-and-Conditions/Terms-e-Documents.aspx>. Attention is drawn to the limitation of liability, indemnification and jurisdiction issues defined therein. Any holder of this document is advised that information contained hereon reflects the Company's findings at the time of its intervention only and within the limits of Client's instructions, if any. The Company's sole responsibility is to its Client and this document does not exonerate parties to a transaction from exercising all their rights and obligations under the transaction documents. This document cannot be reproduced except in full, without prior written approval of the Company. Any unauthorized alteration, forgery or falsification of the content or appearance of this document is unlawful and offenders may be prosecuted to the fullest extent of the law. Unless otherwise stated the results shown in this test report refer only to the sample(s) tested.

Attention: To check the authenticity of testing/inspection report & certificate, please contact us at telephone: (86-755) 8307 1443, or email: [CN.Doccheck@sgs.com](mailto:CN.Doccheck@sgs.com)

Part No.	Part Description	Restricted Substances	Results of EDXRF <sup>(1)</sup>	Screening Result of PHTH <sup>(2)</sup>	Result of Wet Chemical Testing <sup>(3)</sup> (mg/kg)	Conclusion on EU RoHS	Sample Submitted / Resubmitted Date
101	GLA-1003-Silvery metal rod	Pb	BL	---	---	Comply	01 Jun 2021
		Cd	BL	---	---	Comply	
		Hg	BL	---	---	Comply	
		Cr(VI)▼	IN	---	ND	Comply	
		PBBs	---	---	---	---	
		PBDEs	---	---	---	---	
		DBP	---	---	---	---	
		BBP	---	---	---	---	
		DEHP	---	---	---	---	
102	GLA-1003-Silvery metal spring	Pb	BL	---	---	Comply	01 Jun 2021
		Cd	BL	---	---	Comply	
		Hg	BL	---	---	Comply	
		Cr(VI)▼	IN	---	ND	Comply	
		PBBs	---	---	---	---	
		PBDEs	---	---	---	---	
		DBP	---	---	---	---	
		BBP	---	---	---	---	
		DEHP	---	---	---	---	
103	GLA-1003-Silvery metal rod	Pb	BL	---	---	Comply	01 Jun 2021
		Cd	BL	---	---	Comply	
		Hg	BL	---	---	Comply	
		Cr(VI)▼	IN	---	ND	Comply	
		PBBs	---	---	---	---	
		PBDEs	---	---	---	---	
		DBP	---	---	---	---	



Unless otherwise agreed in writing, this document is issued by the Company subject to its General Conditions of Service printed overleaf, available on request or accessible at <http://www.sgs.com/en/Terms-and-Conditions.aspx> and, for electronic format documents, subject to Terms and Conditions for Electronic Documents at <http://www.sgs.com/en/Terms-and-Conditions/Terms-e-Documents.aspx>. Attention is drawn to the limitation of liability, indemnification and jurisdiction issues defined therein. Any holder of this document is advised that information contained hereon reflects the Company's findings at the time of its intervention only and within the limits of Client's instructions, if any. The Company's sole responsibility is to its Client and this document does not exonerate parties to a transaction from exercising all their rights and obligations under the transaction documents. This document cannot be reproduced except in full, without prior written approval of the Company. Any unauthorized alteration, forgery or falsification of the content or appearance of this document is unlawful and offenders may be prosecuted to the fullest extent of the law. Unless otherwise stated the results shown in this test report refer only to the sample(s) tested.

Attention: To check the authenticity of testing/inspection report & certificate, please contact us at telephone: (86-755) 8307 1443, or email: [CN.Doccheck@sgs.com](mailto:CN.Doccheck@sgs.com)

Part No.	Part Description	Restricted Substances	Results of EDXRF <sup>(1)</sup>	Screening Result of PHTH <sup>(2)</sup>	Result of Wet Chemical Testing <sup>(3)</sup> (mg/kg)	Conclusion on EU RoHS	Sample Submitted / Resubmitted Date
		BBP DEHP DIBP	--- --- ---	--- --- ---	--- --- ---	--- --- ---	
104	GLA-1003-White plastic sheath	Pb Cd Hg Cr(VI)▼ PBBs PBDEs DBP BBP DEHP DIBP	BL BL BL BL BL BL --- --- --- ---	--- --- --- --- --- --- BL BL BL BL	--- --- --- --- --- --- --- --- --- ---	Comply Comply Comply Comply Comply Comply Comply Comply Comply Comply	01 Jun 2021
105	GLA-1003-White plastic wire	Pb Cd Hg Cr(VI)▼ PBBs PBDEs DBP BBP DEHP DIBP	BL BL BL BL BL BL --- --- --- ---	--- --- --- --- --- --- BL BL BL BL	--- --- --- --- --- --- --- --- --- ---	Comply Comply Comply Comply Comply Comply Comply Comply Comply Comply	01 Jun 2021



Unless otherwise agreed in writing, this document is issued by the Company subject to its General Conditions of Service printed overleaf, available on request or accessible at <http://www.sgs.com/en/Terms-and-Conditions.aspx> and, for electronic format documents, subject to Terms and Conditions for Electronic Documents at <http://www.sgs.com/en/Terms-and-Conditions/Terms-e-Documents.aspx>. Attention is drawn to the limitation of liability, indemnification and jurisdiction issues defined therein. Any holder of this document is advised that information contained hereon reflects the Company's findings at the time of its intervention only and within the limits of Client's instructions, if any. The Company's sole responsibility is to its Client and this document does not exonerate parties to a transaction from exercising all their rights and obligations under the transaction documents. This document cannot be reproduced except in full, without prior written approval of the Company. Any unauthorized alteration, forgery or falsification of the content or appearance of this document is unlawful and offenders may be prosecuted to the fullest extent of the law. Unless otherwise stated the results shown in this test report refer only to the sample(s) tested.

Attention: To check the authenticity of testing/inspection report & certificate, please contact us at telephone: (86-755) 8307 1443, or email: [CN.Doccheck@sgs.com](mailto:CN.Doccheck@sgs.com)

Remark :

- (1) (a) There are the results on total Br while test items on restricted substances are PBBs and PBDEs. There is the result on total Cr while test item on restricted substances is Cr(VI).
- (b) Results are obtained by EDXRF for primary screening, and further chemical testing by ICP-OES (for Cd, Pb, Hg), UV-Vis (for Cr(VI)) and GC-MS (for PBBs, PBDEs) is recommended to be performed, if the concentration exceeds the below warning value according to IEC62321-3-1:2013 (unit: mg/kg).

Element	Polymer	Metal	Composite Materials
Cd	BL $\leq$ (70-3 $\sigma$ ) < X < (130+3 $\sigma$ ) $\leq$ OL	BL $\leq$ (70-3 $\sigma$ ) < X < (130+3 $\sigma$ ) $\leq$ OL	LOD < X < (150+3 $\sigma$ ) $\leq$ OL
Pb	BL $\leq$ (700-3 $\sigma$ ) < X < (1300+3 $\sigma$ ) $\leq$ OL	BL $\leq$ (700-3 $\sigma$ ) < X < (1300+3 $\sigma$ ) $\leq$ OL	BL $\leq$ (500-3 $\sigma$ ) < X < (1500+3 $\sigma$ ) $\leq$ OL
Hg	BL $\leq$ (700-3 $\sigma$ ) < X < (1300+3 $\sigma$ ) $\leq$ OL	BL $\leq$ (700-3 $\sigma$ ) < X < (1300+3 $\sigma$ ) $\leq$ OL	BL $\leq$ (500-3 $\sigma$ ) < X < (1500+3 $\sigma$ ) $\leq$ OL
Br	BL $\leq$ (300-3 $\sigma$ ) < X	--	BL $\leq$ (250-3 $\sigma$ ) < X
Cr	BL $\leq$ (700-3 $\sigma$ ) < X	BL $\leq$ (700-3 $\sigma$ ) < X	BL $\leq$ (500-3 $\sigma$ ) < X

(c) BL = Below Limit, OL = Over Limit, IN = Inconclusive, LOD = Limit of Detection, -- = Not regulated.

(d) The XRF screening test for RoHS elements - The reading may be different to the actual content in the sample be of non-uniformity composition.

- (2) Screening results of PHTH are for primary screening, and further chemical testing by GC-MS (for DBP, BBP, DEHP and DIBP) are recommended to be performed if the concentration exceeds the below warning value (unit: mg/kg)

Compound	Polymer
DBP	BL $\leq$ 600 < X
BBP	BL $\leq$ 600 < X
DEHP	BL $\leq$ 600 < X
DIBP	BL $\leq$ 600 < X

- (3) (a) mg/kg = 0.0001%, MDL=Method detection Limit, ND = Not Detected (<MDL), --- = Not conducted, - = Without BOM.

(b) Unit and MDL in wet chemical test

Test Item	Pb	Cd	Hg	DBP	BBP	DEHP	DIBP
Unit	mg/kg	mg/kg	mg/kg	mg/kg	mg/kg	mg/kg	mg/kg
MDL	10	10	10	100	100	100	100



Unless otherwise agreed in writing, this document is issued by the Company subject to its General Conditions of Service printed overleaf, available on request or accessible at <http://www.sgs.com/en/Terms-and-Conditions.aspx> and, for electronic format documents, subject to Terms and Conditions for Electronic Documents at <http://www.sgs.com/en/Terms-and-Conditions/Terms-e-Documents.aspx>. Attention is drawn to the limitation of liability, indemnification and jurisdiction issues defined therein. Any holder of this document is advised that information contained hereon reflects the Company's findings at the time of its intervention only and within the limits of Client's instructions, if any. The Company's sole responsibility is to its Client and this document does not exonerate parties to a transaction from exercising all their rights and obligations under the transaction documents. This document cannot be reproduced except in full, without prior written approval of the Company. Any unauthorized alteration, forgery or falsification of the content or appearance of this document is unlawful and offenders may be prosecuted to the fullest extent of the law. Unless otherwise stated the results shown in this test report refer only to the sample(s) tested.

Attention: To check the authenticity of testing /inspection report & certificate, please contact us at telephone: (86-755) 8307 1443, or email: [CN.Doccheck@sgs.com](mailto:CN.Doccheck@sgs.com)

The MDL for single compound of PBBs and PBDEs is 100 mg/kg,  
 MDL of Cr(VI) for polymer, composite and leather sample is 10 mg/kg,  
 MDL of Cr(VI) for metal sample is 0.10µg/cm<sup>2</sup>.

(c) ▼ =Metal sample

- a. The sample is positive for CrVI if the CrVI concentration is greater than 0.13 µg/cm<sup>2</sup>.  
 The sample coating is considered to contain CrVI
- b. The sample is negative for CrVI if CrVI is ND (concentration less than 0.10 µg/cm<sup>2</sup>).  
 The coating is considered a non-CrVI based coating
- c. The result between 0.10 µg/cm<sup>2</sup> and 0.13 µg/cm<sup>2</sup> is considered to be inconclusive  
 - unavoidable coating variations may influence the determination

Information on storage conditions and production date of the tested sample is unavailable and thus Cr(VI) results represent status of the sample at the time of testing.

IEC 62321 series is equivalent to EN 62321 series

[https://www.cenelec.eu/dyn/www/f?p=104:30:1742232870351101:::FSP\\_ORG\\_ID,FSP\\_LANG\\_ID:125863\\_7,25](https://www.cenelec.eu/dyn/www/f?p=104:30:1742232870351101:::FSP_ORG_ID,FSP_LANG_ID:125863_7,25)



Unless otherwise agreed in writing, this document is issued by the Company subject to its General Conditions of Service printed overleaf, available on request or accessible at <http://www.sgs.com/en/Terms-and-Conditions.aspx> and, for electronic format documents, subject to Terms and Conditions for Electronic Documents at <http://www.sgs.com/en/Terms-and-Conditions/Terms-e-Document.aspx>. Attention is drawn to the limitation of liability, indemnification and jurisdiction issues defined therein. Any holder of this document is advised that information contained hereon reflects the Company's findings at the time of its intervention only and within the limits of Client's instructions, if any. The Company's sole responsibility is to its Client and this document does not exonerate parties to a transaction from exercising all their rights and obligations under the transaction documents. This document cannot be reproduced except in full, without prior written approval of the Company. Any unauthorized alteration, forgery or falsification of the content or appearance of this document is unlawful and offenders may be prosecuted to the fullest extent of the law. Unless otherwise stated the results shown in this test report refer only to the sample(s) tested.  
**Attention: To check the authenticity of testing/inspection report & certificate, please contact us at telephone: (86-755) 8307 1443, or email: [CN.Doccheck@sgs.com](mailto:CN.Doccheck@sgs.com)**

(d)▲=According to the declaration from the client, Lead (Pb) in No.3 is exempted by EU RoHS directive 2011/65/EU based on |ANNEX III 6(c)|: Copper alloy containing up to 4 % lead by weight.

(4) Restricted substances and maximum concentration values tolerated by weight in homogeneous materials under RoHS Directive: Cd: 0.01%, Pb/Hg/Cr(VI)/PBBs/PBDEs/DEHP/DBP/BBP/DIBP: 0.1%. The limit is quoted from RoHS Directive (EU) 2015/863.

(5) According to the declaration from applicant, the materials of Model “GLA-1003” are the same as those in Mode mentioned in Client Ref. Information and its results for support the results of Model mentioned in Client Ref. Information. The applicant will take the responsibility of all discrepancy and risk.

**ATTACHMENT:**

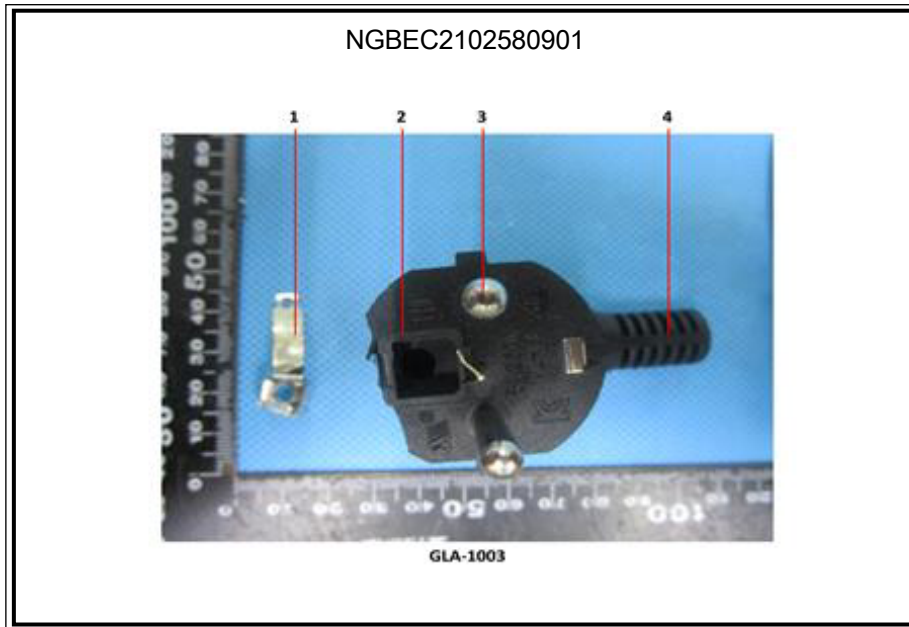
GLA-201 GLA-201A GLA-202 GLA-203 GLA-203A GLA-205 GLA-206 GLA-207 GLA-208  
 GLA-209 GLA-210 GLA-211 GLA-212 GLA-215 GLA-216 GLA-301 GLA-302 GLA-305  
 GLA-306 GLA-307 GLA-308 GLA-308A GLA-309 GLA-310 GLA-311 GLA-312 GLA-315  
 GLA-316 GLA-317 GLA-318 GLA-331 GLA-332 GLA-3011 GLA-3011A GLA-3011B  
 GLA-3012 GLA-3012A GLA-3012B GLA-3015 GLA-3016 GLA-3017 GLA-3018 GLA-3019  
 GLA-3020 GLA-501 GLA-502 GLA-502A GLA-505 GLA-506 GLA-507 GLA-508 GLA-509  
 GLA-510 GLA-521 GLA-521A GLA-522 GLA-525 GLA-526 GLA-527 GLA-528 GLA-529  
 GLA-530 GLA-531 GLA-532 GLA-535 GLA-536 GLA-537 GLA-538 GLA-601 GLA-603  
 GLA-605 GLA-606 GLA-607 GLA-608 GLA-608A GLA-608B GLA-608C GLA-620  
 GLA-611 GLA-612 GLA-615 GLA-616 GLA-615A GLA-616A GLA-617 GLA-618 GLA-711  
 GLA-712 GLA-715 GLA-716 GLA-717 GAL-718 GLA-719 GLA-720 GLA-721 GLA-722  
 GLA725 GLA-726 GLA-815 GLA-816 GLA-816A GLA-817 GLA-818 GLA-819 GLA-820  
 GLA-901 GLA-902 GLA-905 GLA-906 GLA-907 GLA-908 GLA-909 GLA-910 GLA-1001  
 GLA-1001A GLA-1002 GLA-1003 GLA-1003-NR GLA-1005 GLA-1005-NR GLA-1006  
 GLA-1007 GLA-1008 GLA-1009 GLA-1010 GLA-1011 GLA-1012 GLA-1003B GLA-1005B  
 GLA-609 GLA-609A GLA-610 GLA-1006B GLA-1006J GLA-1007B



Unless otherwise agreed in writing, this document is issued by the Company subject to its General Conditions of Service printed overleaf, available on request or accessible at <http://www.sgs.com/en/Terms-and-Conditions.aspx> and, for electronic format documents, subject to Terms and Conditions for Electronic Documents at <http://www.sgs.com/en/Terms-and-Conditions/Terms-e-Documents.aspx>. Attention is drawn to the limitation of liability, indemnification and jurisdiction issues defined therein. Any holder of this document is advised that information contained hereon reflects the Company's findings at the time of its intervention only and within the limits of Client's instructions, if any. The Company's sole responsibility is to its Client and this document does not exonerate parties to a transaction from exercising all their rights and obligations under the transaction documents. This document cannot be reproduced except in full, without prior written approval of the Company. Any unauthorized alteration, forgery or falsification of the content or appearance of this document is unlawful and offenders may be prosecuted to the fullest extent of the law. Unless otherwise stated the results shown in this test report refer only to the sample(s) tested.

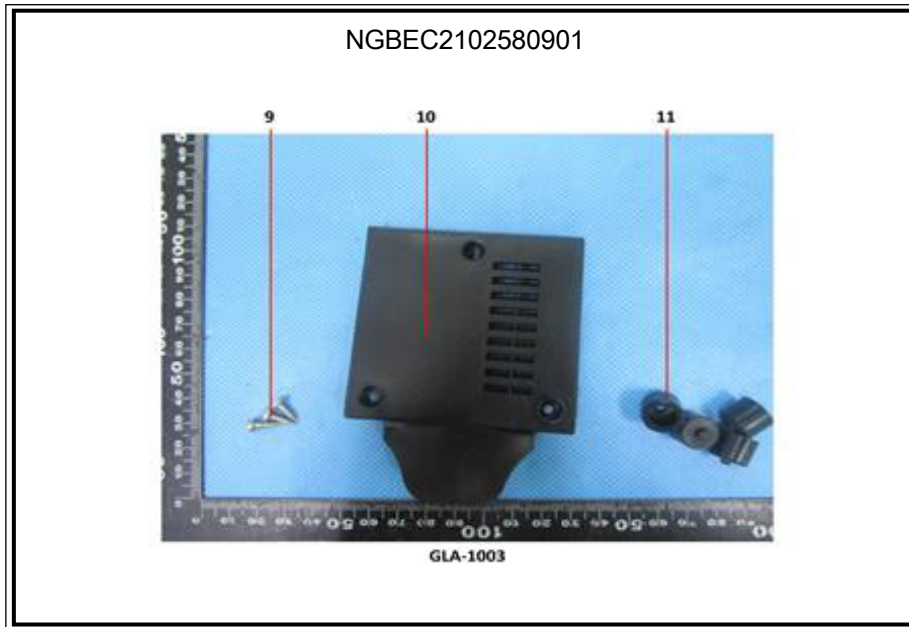
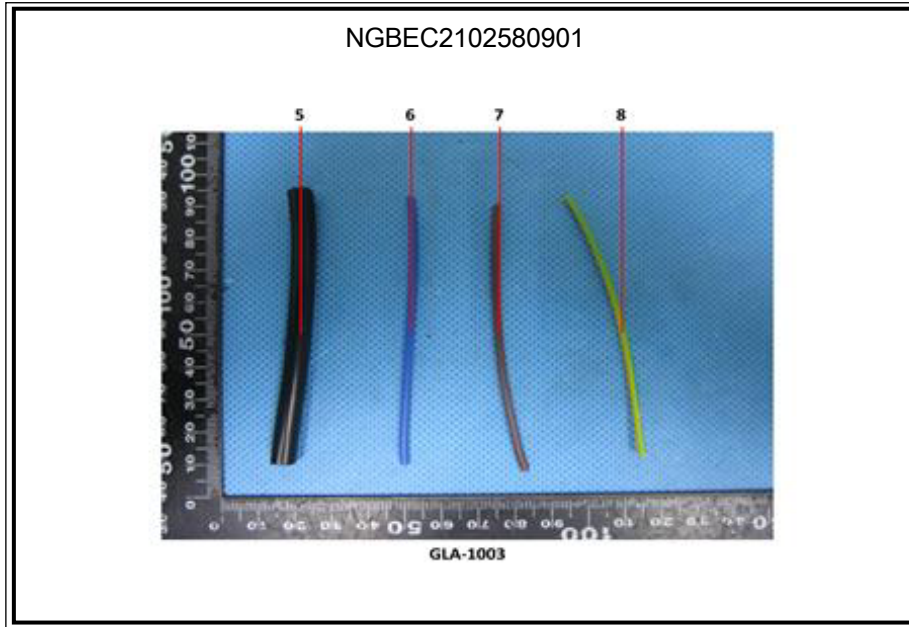
Attention: To check the authenticity of testing /inspection report & certificate, please contact us at telephone: (86-755) 8307 1443, or email: [CN.Doccheck@sgs.com](mailto:CN.Doccheck@sgs.com)

Sample photo:



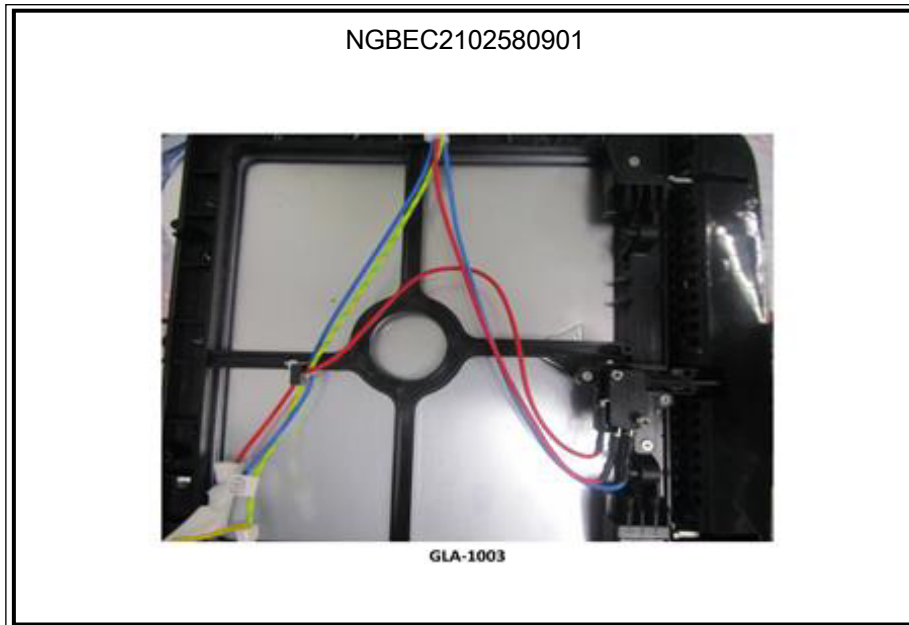
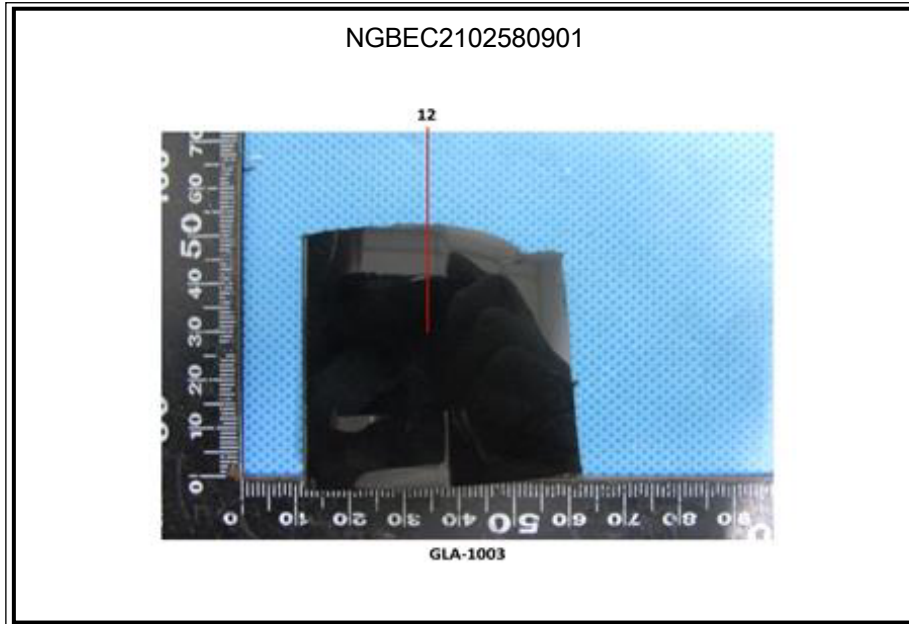
Unless otherwise agreed in writing, this document is issued by the Company subject to its General Conditions of Service printed overleaf, available on request or accessible at <http://www.sgs.com/en/Terms-and-Conditions.aspx> and, for electronic format documents, subject to Terms and Conditions for Electronic Documents at <http://www.sgs.com/en/Terms-and-Conditions/Terms-e-Document.aspx>. Attention is drawn to the limitation of liability, indemnification and jurisdiction issues defined therein. Any holder of this document is advised that information contained hereon reflects the Company's findings at the time of its intervention only and within the limits of Client's instructions, if any. The Company's sole responsibility is to its Client and this document does not exonerate parties to a transaction from exercising all their rights and obligations under the transaction documents. This document cannot be reproduced except in full, without prior written approval of the Company. Any unauthorized alteration, forgery or falsification of the content or appearance of this document is unlawful and offenders may be prosecuted to the fullest extent of the law. Unless otherwise stated the results shown in this test report refer only to the sample(s) tested.

Attention: To check the authenticity of testing/inspection report & certificate, please contact us at telephone: (86-755) 8307 1443, or email: [CN.Doccheck@sgs.com](mailto:CN.Doccheck@sgs.com)



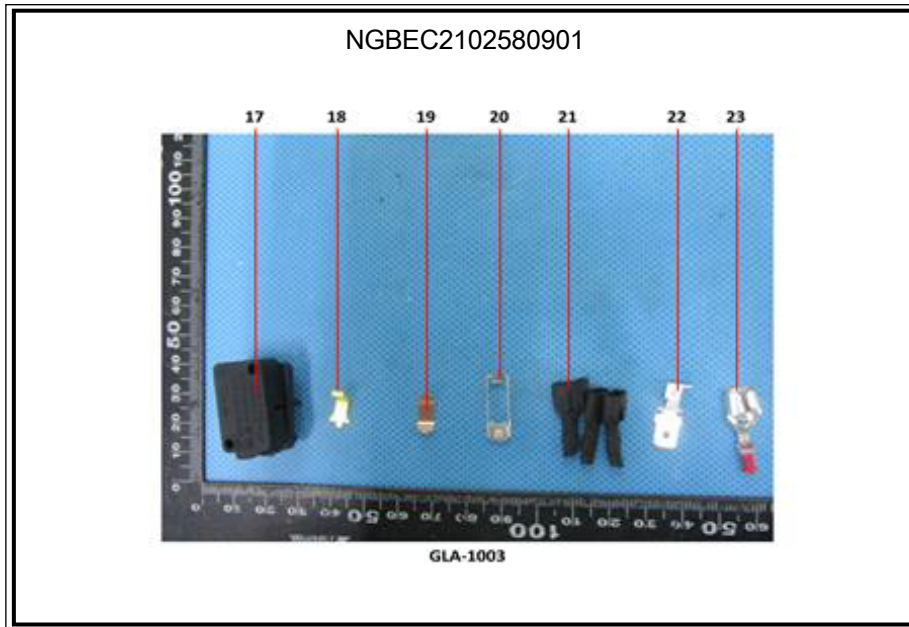
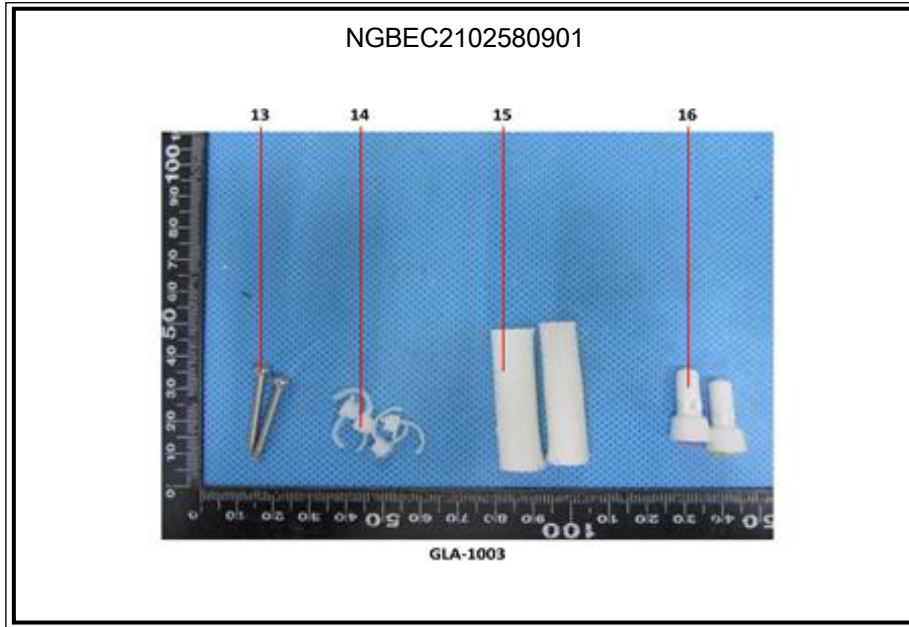
Unless otherwise agreed in writing, this document is issued by the Company subject to its General Conditions of Service printed overleaf, available on request or accessible at <http://www.sgs.com/en/Terms-and-Conditions.aspx> and, for electronic format documents, subject to Terms and Conditions for Electronic Documents at <http://www.sgs.com/en/Terms-and-Conditions/Terms-e-Document.aspx>. Attention is drawn to the limitation of liability, indemnification and jurisdiction issues defined therein. Any holder of this document is advised that information contained hereon reflects the Company's findings at the time of its intervention only and within the limits of Client's instructions, if any. The Company's sole responsibility is to its Client and this document does not exonerate parties to a transaction from exercising all their rights and obligations under the transaction documents. This document cannot be reproduced except in full, without prior written approval of the Company. Any unauthorized alteration, forgery or falsification of the content or appearance of this document is unlawful and offenders may be prosecuted to the fullest extent of the law. Unless otherwise stated the results shown in this test report refer only to the sample(s) tested.

Attention: To check the authenticity of testing/inspection report & certificate, please contact us at telephone: (86-755) 8307 1443, or email: [CN.Doccheck@sgs.com](mailto:CN.Doccheck@sgs.com)



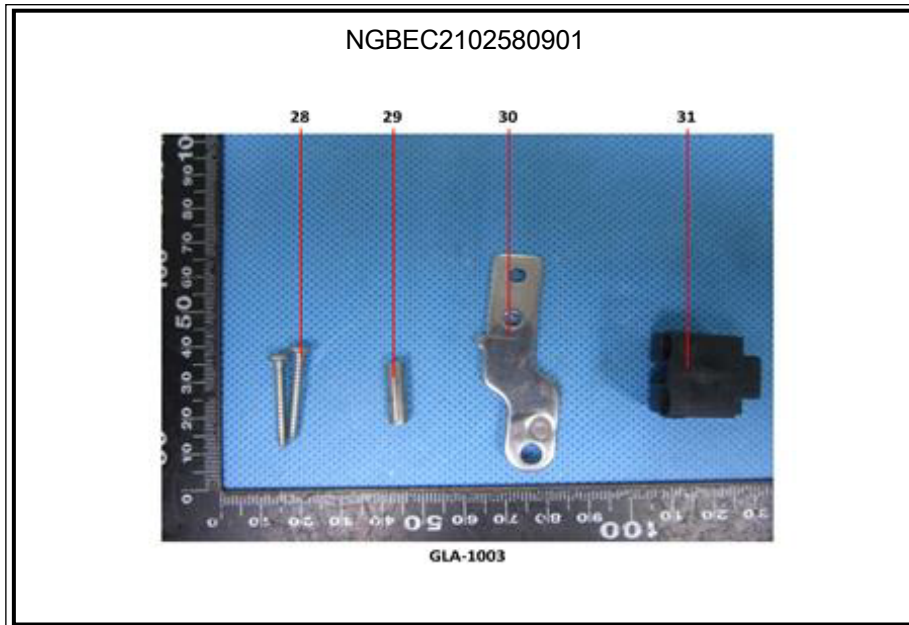
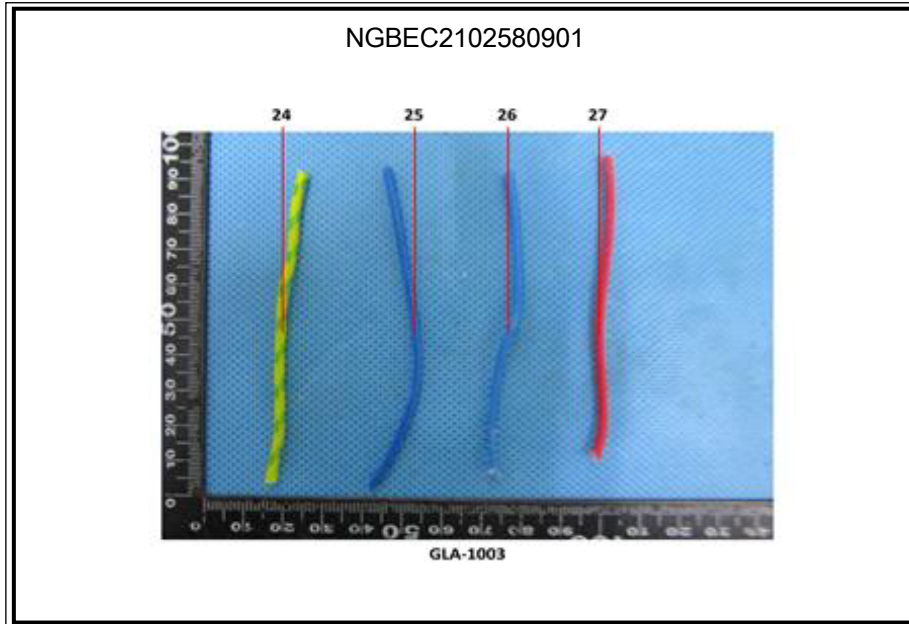
Unless otherwise agreed in writing, this document is issued by the Company subject to its General Conditions of Service printed overleaf, available on request or accessible at <http://www.sgs.com/en/Terms-and-Conditions.aspx> and, for electronic format documents, subject to Terms and Conditions for Electronic Documents at <http://www.sgs.com/en/Terms-and-Conditions/Terms-e-Document.aspx>. Attention is drawn to the limitation of liability, indemnification and jurisdiction issues defined therein. Any holder of this document is advised that information contained hereon reflects the Company's findings at the time of its intervention only and within the limits of Client's instructions, if any. The Company's sole responsibility is to its Client and this document does not exonerate parties to a transaction from exercising all their rights and obligations under the transaction documents. This document cannot be reproduced except in full, without prior written approval of the Company. Any unauthorized alteration, forgery or falsification of the content or appearance of this document is unlawful and offenders may be prosecuted to the fullest extent of the law. Unless otherwise stated the results shown in this test report refer only to the sample(s) tested.

Attention: To check the authenticity of testing /inspection report & certificate, please contact us at telephone: (86-755) 8307 1443, or email: [CN.Doccheck@sgs.com](mailto:CN.Doccheck@sgs.com)



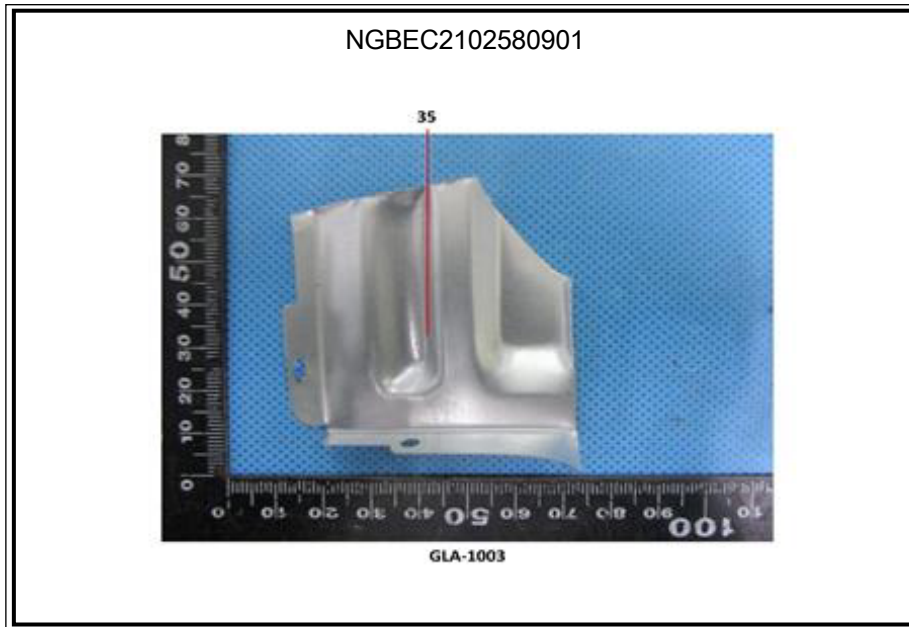
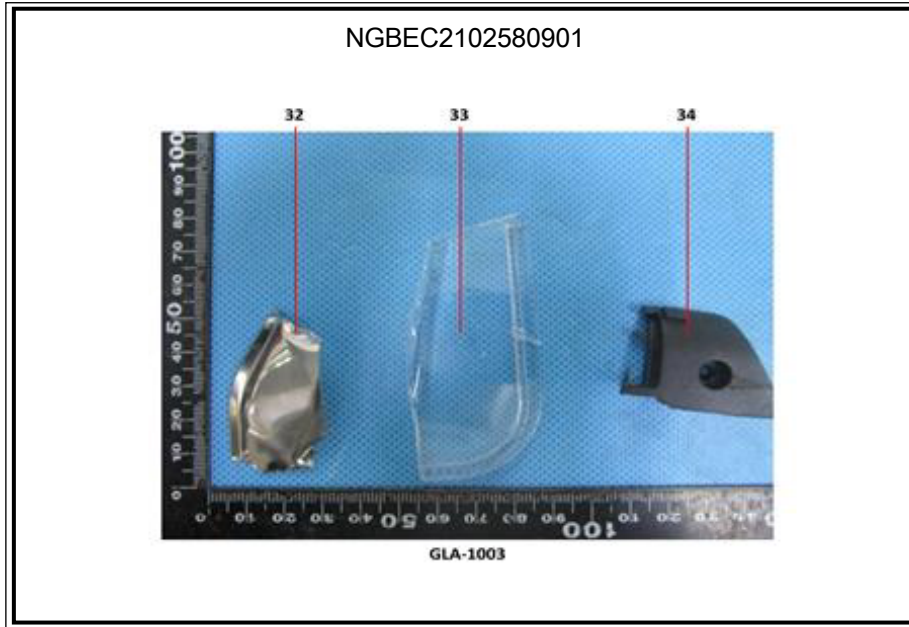
Unless otherwise agreed in writing, this document is issued by the Company subject to its General Conditions of Service printed overleaf, available on request or accessible at <http://www.sgs.com/en/Terms-and-Conditions.aspx> and, for electronic format documents, subject to Terms and Conditions for Electronic Documents at <http://www.sgs.com/en/Terms-and-Conditions/Terms-e-Document.aspx>. Attention is drawn to the limitation of liability, indemnification and jurisdiction issues defined therein. Any holder of this document is advised that information contained hereon reflects the Company's findings at the time of its intervention only and within the limits of Client's instructions, if any. The Company's sole responsibility is to its Client and this document does not exonerate parties to a transaction from exercising all their rights and obligations under the transaction documents. This document cannot be reproduced except in full, without prior written approval of the Company. Any unauthorized alteration, forgery or falsification of the content or appearance of this document is unlawful and offenders may be prosecuted to the fullest extent of the law. Unless otherwise stated the results shown in this test report refer only to the sample(s) tested.

**Attention: To check the authenticity of testing/inspection report & certificate, please contact us at telephone: (86-755) 8307 1443, or email: [CN.Doccheck@sgs.com](mailto:CN.Doccheck@sgs.com)**



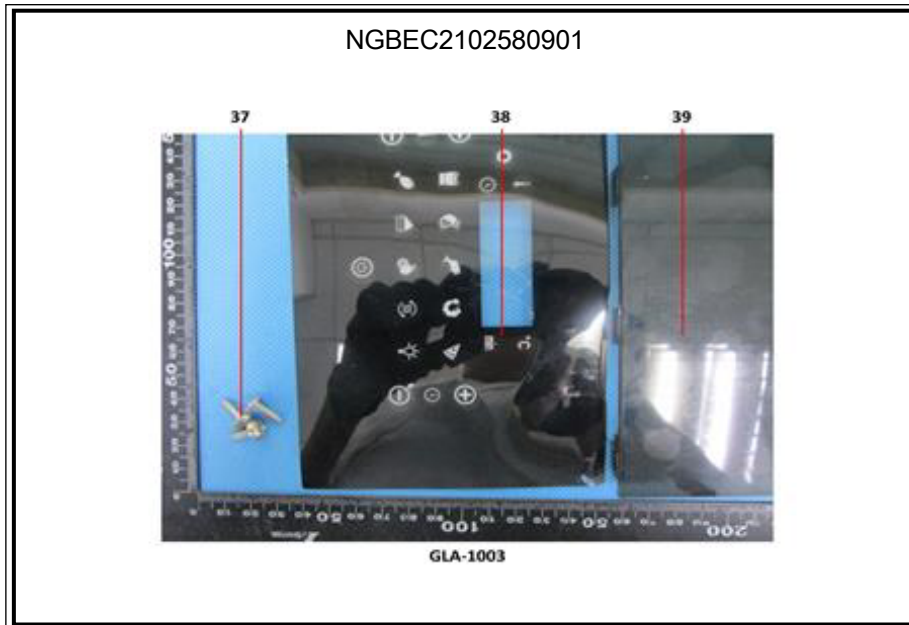
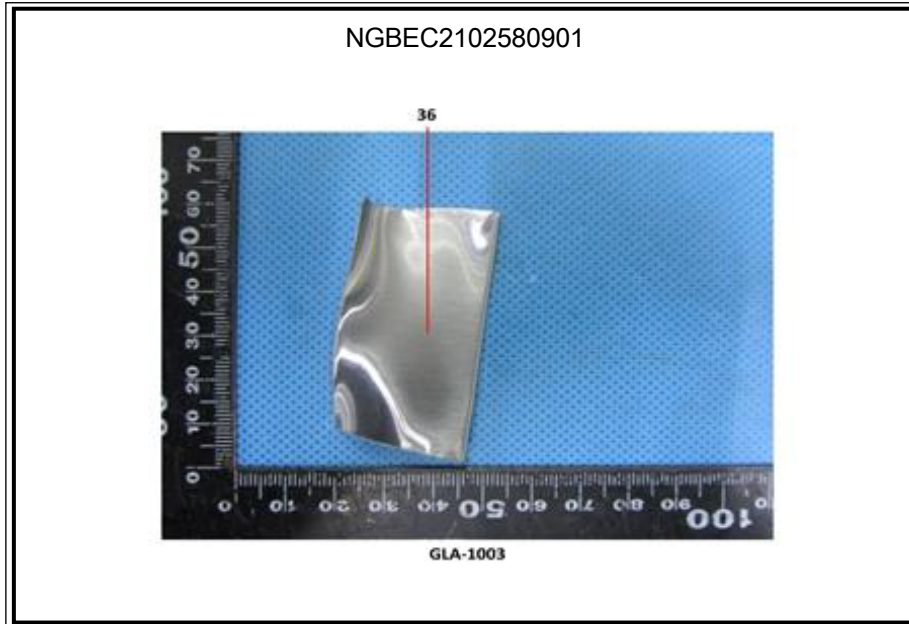
Unless otherwise agreed in writing, this document is issued by the Company subject to its General Conditions of Service printed overleaf, available on request or accessible at <http://www.sgs.com/en/Terms-and-Conditions.aspx> and, for electronic format documents, subject to Terms and Conditions for Electronic Documents at <http://www.sgs.com/en/Terms-and-Conditions/Terms-e-Document.aspx>. Attention is drawn to the limitation of liability, indemnification and jurisdiction issues defined therein. Any holder of this document is advised that information contained hereon reflects the Company's findings at the time of its intervention only and within the limits of Client's instructions, if any. The Company's sole responsibility is to its Client and this document does not exonerate parties to a transaction from exercising all their rights and obligations under the transaction documents. This document cannot be reproduced except in full, without prior written approval of the Company. Any unauthorized alteration, forgery or falsification of the content or appearance of this document is unlawful and offenders may be prosecuted to the fullest extent of the law. Unless otherwise stated the results shown in this test report refer only to the sample(s) tested.

**Attention: To check the authenticity of testing/inspection report & certificate, please contact us at telephone: (86-755) 8307 1443, or email: [CN.Doccheck@sgs.com](mailto:CN.Doccheck@sgs.com)**



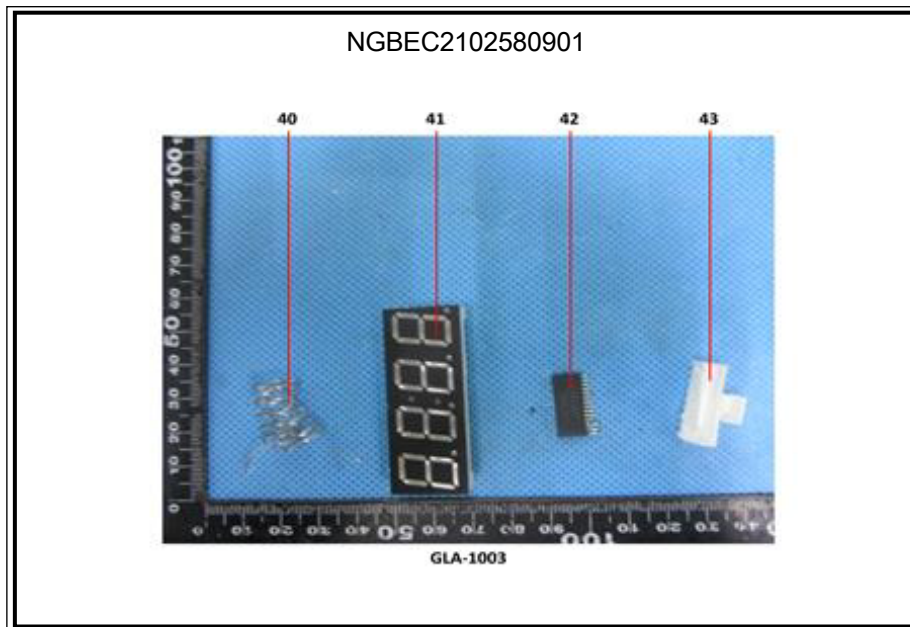
Unless otherwise agreed in writing, this document is issued by the Company subject to its General Conditions of Service printed overleaf, available on request or accessible at <http://www.sgs.com/en/Terms-and-Conditions.aspx> and, for electronic format documents, subject to Terms and Conditions for Electronic Documents at <http://www.sgs.com/en/Terms-and-Conditions/Terms-e-Document.aspx>. Attention is drawn to the limitation of liability, indemnification and jurisdiction issues defined therein. Any holder of this document is advised that information contained hereon reflects the Company's findings at the time of its intervention only and within the limits of Client's instructions, if any. The Company's sole responsibility is to its Client and this document does not exonerate parties to a transaction from exercising all their rights and obligations under the transaction documents. This document cannot be reproduced except in full, without prior written approval of the Company. Any unauthorized alteration, forgery or falsification of the content or appearance of this document is unlawful and offenders may be prosecuted to the fullest extent of the law. Unless otherwise stated the results shown in this test report refer only to the sample(s) tested.

**Attention: To check the authenticity of testing /inspection report & certificate, please contact us at telephone: (86-755) 8307 1443, or email: [CN.Doccheck@sgs.com](mailto:CN.Doccheck@sgs.com)**



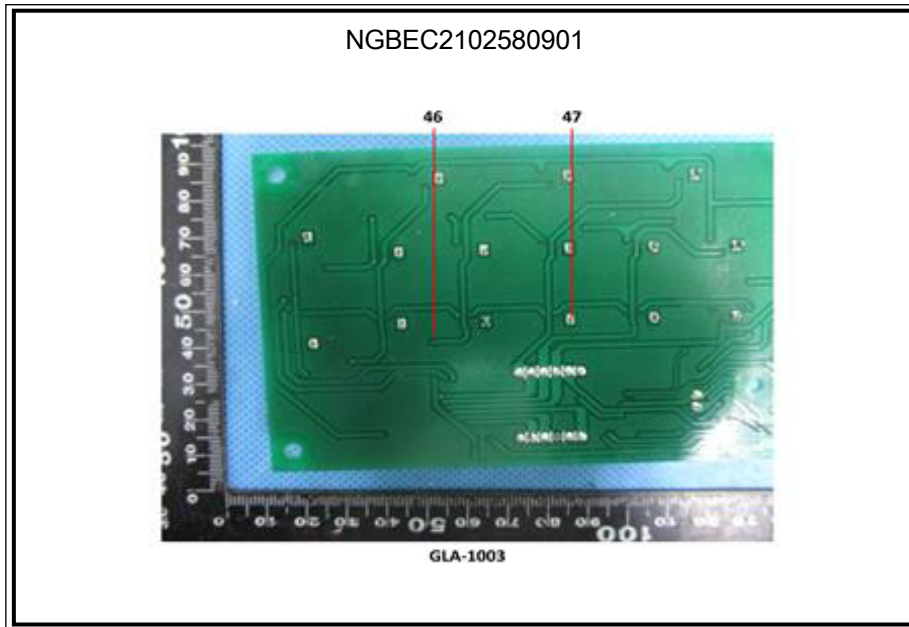
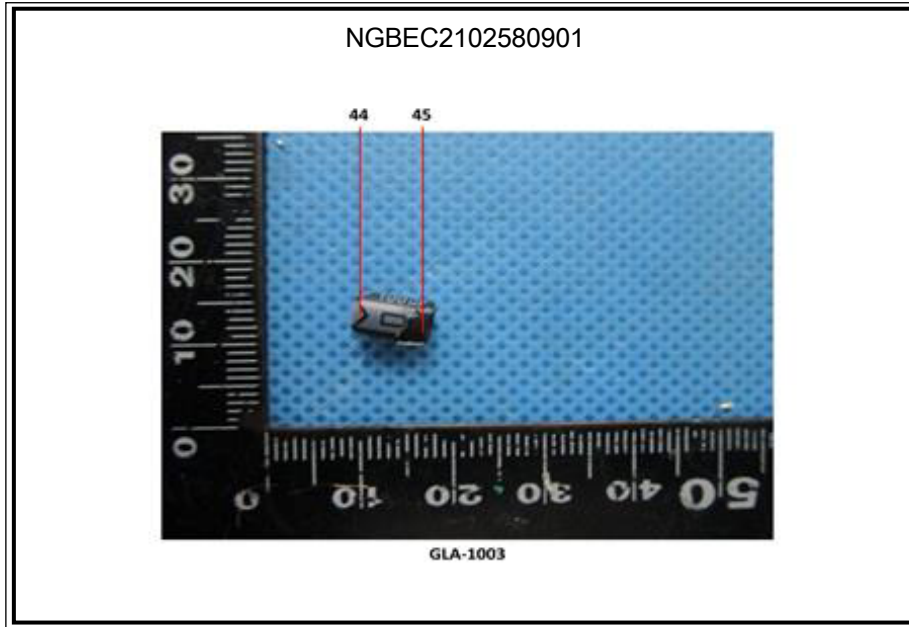
Unless otherwise agreed in writing, this document is issued by the Company subject to its General Conditions of Service printed overleaf, available on request or accessible at <http://www.sgs.com/en/Terms-and-Conditions.aspx> and, for electronic format documents, subject to Terms and Conditions for Electronic Documents at <http://www.sgs.com/en/Terms-and-Conditions/Terms-e-Documents.aspx>. Attention is drawn to the limitation of liability, indemnification and jurisdiction issues defined therein. Any holder of this document is advised that information contained hereon reflects the Company's findings at the time of its intervention only and within the limits of Client's instructions, if any. The Company's sole responsibility is to its Client and this document does not exonerate parties to a transaction from exercising all their rights and obligations under the transaction documents. This document cannot be reproduced except in full, without prior written approval of the Company. Any unauthorized alteration, forgery or falsification of the content or appearance of this document is unlawful and offenders may be prosecuted to the fullest extent of the law. Unless otherwise stated the results shown in this test report refer only to the sample(s) tested.

**Attention: To check the authenticity of testing /inspection report & certificate, please contact us at telephone: (86-755) 8307 1443, or email: [CN.Doccheck@sgs.com](mailto:CN.Doccheck@sgs.com)**



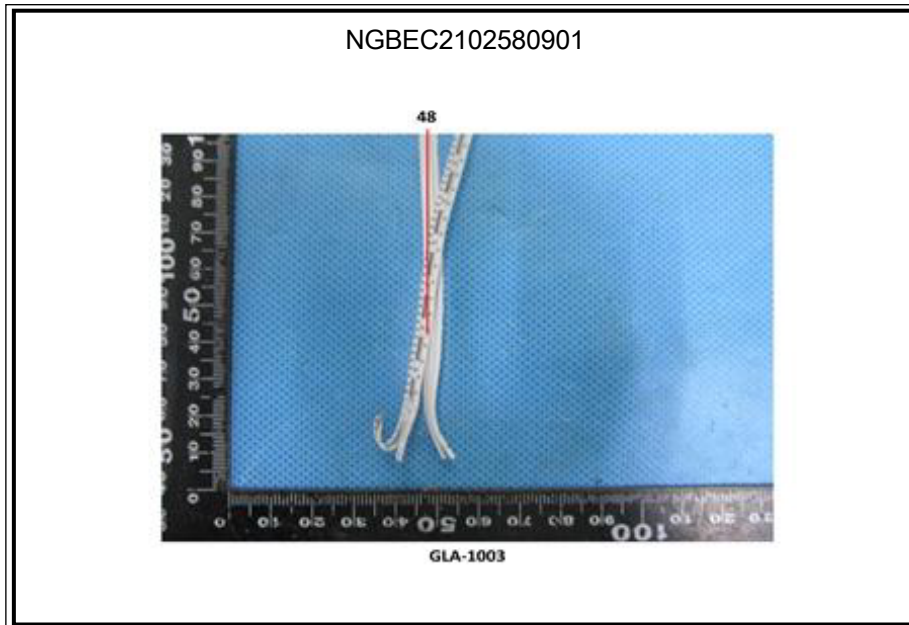
Unless otherwise agreed in writing, this document is issued by the Company subject to its General Conditions of Service printed overleaf, available on request or accessible at <http://www.sgs.com/en/Terms-and-Conditions.aspx> and, for electronic format documents, subject to Terms and Conditions for Electronic Documents at <http://www.sgs.com/en/Terms-and-Conditions/Terms-e-Document.aspx>. Attention is drawn to the limitation of liability, indemnification and jurisdiction issues defined therein. Any holder of this document is advised that information contained hereon reflects the Company's findings at the time of its intervention only and within the limits of Client's instructions, if any. The Company's sole responsibility is to its Client and this document does not exonerate parties to a transaction from exercising all their rights and obligations under the transaction documents. This document cannot be reproduced except in full, without prior written approval of the Company. Any unauthorized alteration, forgery or falsification of the content or appearance of this document is unlawful and offenders may be prosecuted to the fullest extent of the law. Unless otherwise stated the results shown in this test report refer only to the sample(s) tested.

**Attention: To check the authenticity of testing/inspection report & certificate, please contact us at telephone: (86-755) 8307 1443, or email: [CN.Doccheck@sgs.com](mailto:CN.Doccheck@sgs.com)**



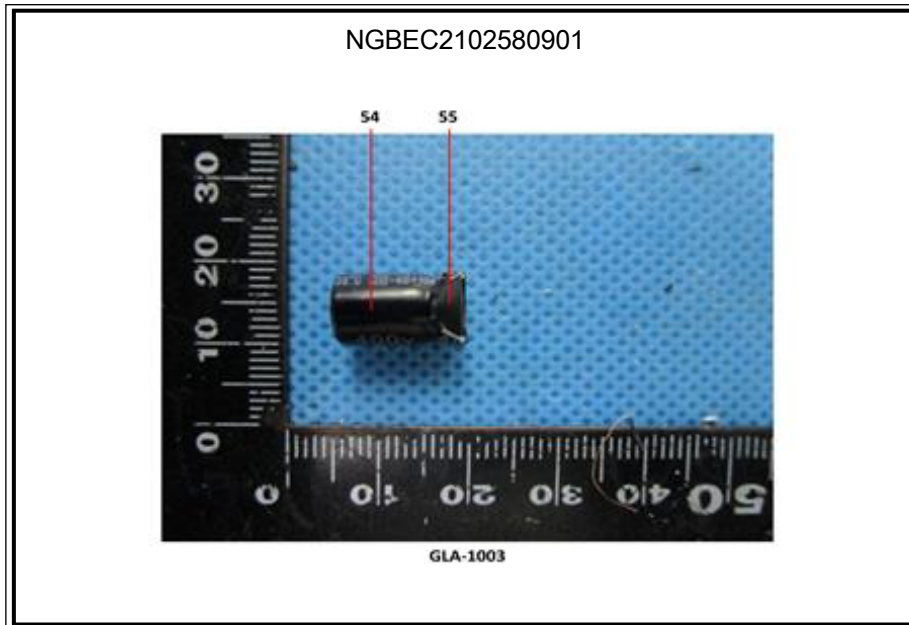
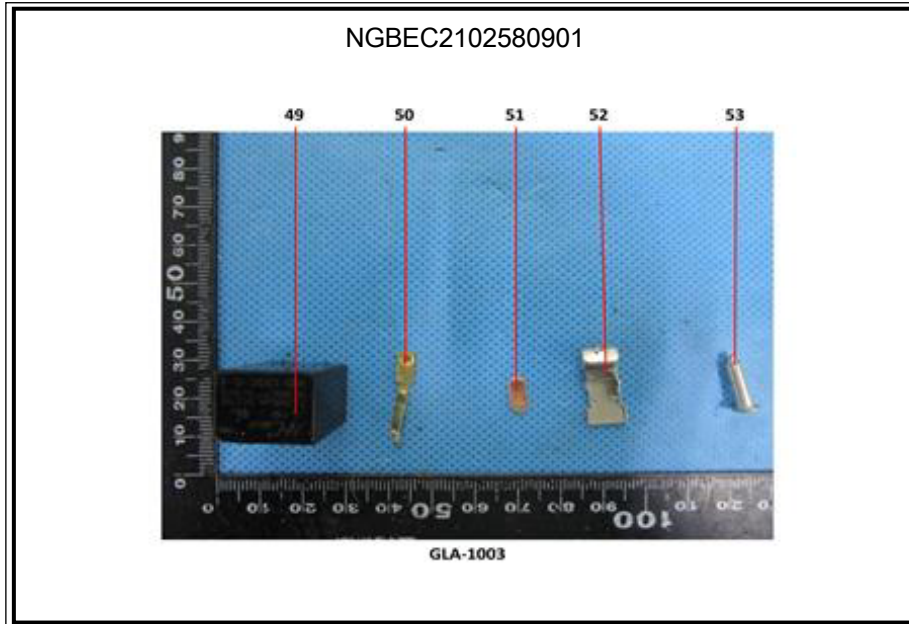
Unless otherwise agreed in writing, this document is issued by the Company subject to its General Conditions of Service printed overleaf, available on request or accessible at <http://www.sgs.com/en/Terms-and-Conditions.aspx> and, for electronic format documents, subject to Terms and Conditions for Electronic Documents at <http://www.sgs.com/en/Terms-and-Conditions/Terms-e-Document.aspx>. Attention is drawn to the limitation of liability, indemnification and jurisdiction issues defined therein. Any holder of this document is advised that information contained hereon reflects the Company's findings at the time of its intervention only and within the limits of Client's instructions, if any. The Company's sole responsibility is to its Client and this document does not exonerate parties to a transaction from exercising all their rights and obligations under the transaction documents. This document cannot be reproduced except in full, without prior written approval of the Company. Any unauthorized alteration, forgery or falsification of the content or appearance of this document is unlawful and offenders may be prosecuted to the fullest extent of the law. Unless otherwise stated the results shown in this test report refer only to the sample(s) tested.

**Attention: To check the authenticity of testing /inspection report & certificate, please contact us at telephone: (86-755) 8307 1443, or email: [CN.Doccheck@sgs.com](mailto:CN.Doccheck@sgs.com)**



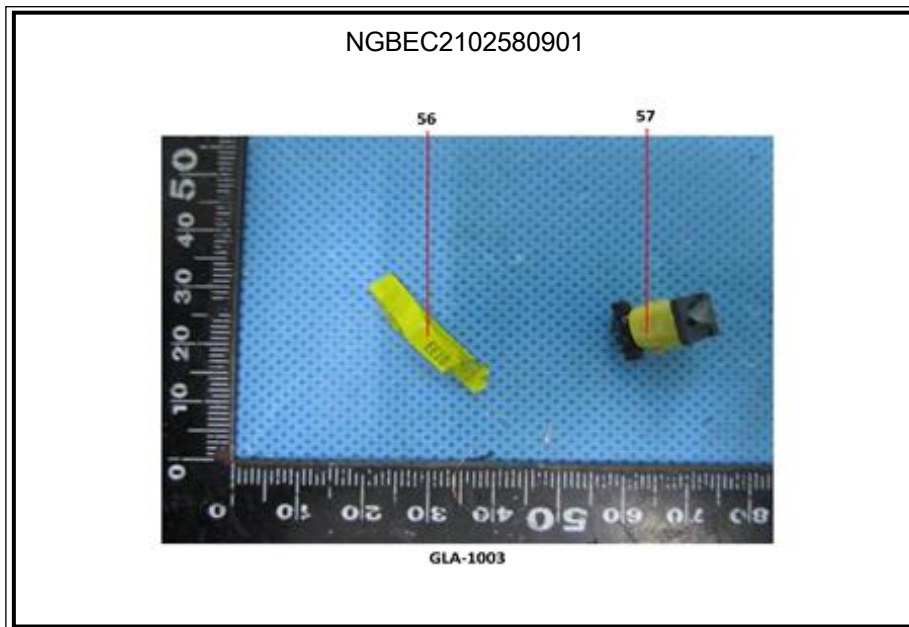
Unless otherwise agreed in writing, this document is issued by the Company subject to its General Conditions of Service printed overleaf, available on request or accessible at <http://www.sgs.com/en/Terms-and-Conditions.aspx> and, for electronic format documents, subject to Terms and Conditions for Electronic Documents at <http://www.sgs.com/en/Terms-and-Conditions/Terms-e-Document.aspx>. Attention is drawn to the limitation of liability, indemnification and jurisdiction issues defined therein. Any holder of this document is advised that information contained hereon reflects the Company's findings at the time of its intervention only and within the limits of Client's instructions, if any. The Company's sole responsibility is to its Client and this document does not exonerate parties to a transaction from exercising all their rights and obligations under the transaction documents. This document cannot be reproduced except in full, without prior written approval of the Company. Any unauthorized alteration, forgery or falsification of the content or appearance of this document is unlawful and offenders may be prosecuted to the fullest extent of the law. Unless otherwise stated the results shown in this test report refer only to the sample(s) tested.

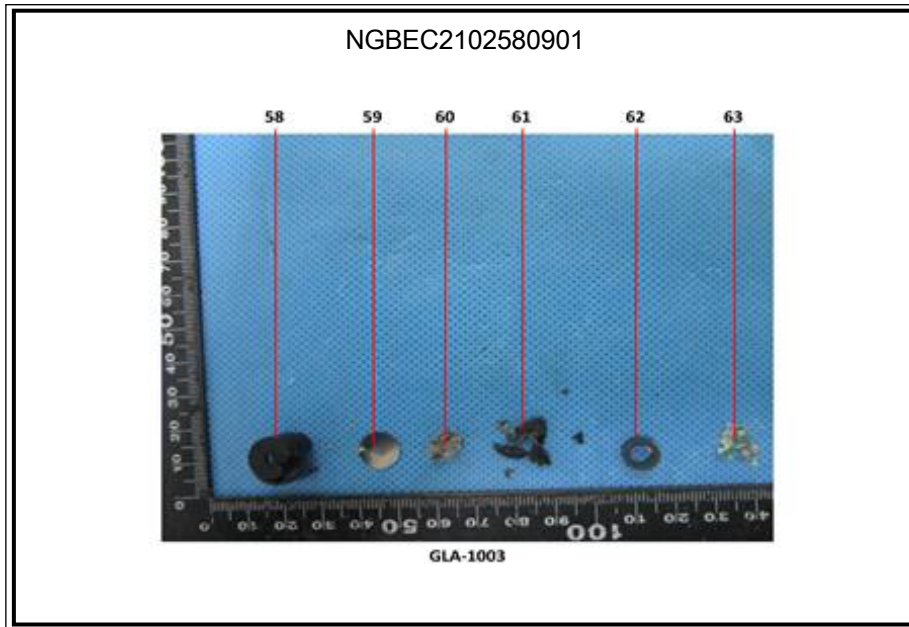
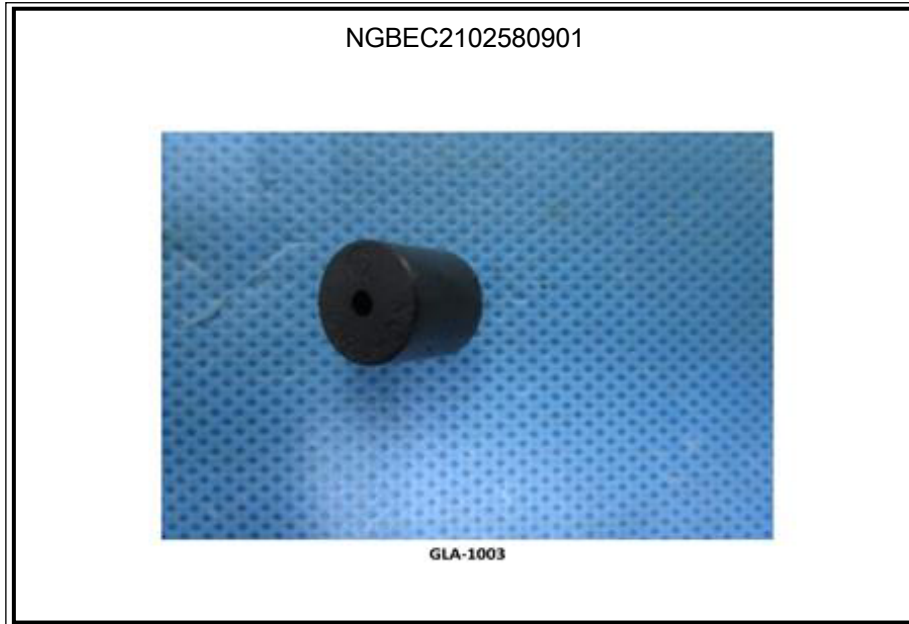
**Attention: To check the authenticity of testing/inspection report & certificate, please contact us at telephone: (86-755) 8307 1443, or email: [CN.Doccheck@sgs.com](mailto:CN.Doccheck@sgs.com)**



Unless otherwise agreed in writing, this document is issued by the Company subject to its General Conditions of Service printed overleaf, available on request or accessible at <http://www.sgs.com/en/Terms-and-Conditions.aspx> and, for electronic format documents, subject to Terms and Conditions for Electronic Documents at <http://www.sgs.com/en/Terms-and-Conditions/Terms-e-Document.aspx>. Attention is drawn to the limitation of liability, indemnification and jurisdiction issues defined therein. Any holder of this document is advised that information contained hereon reflects the Company's findings at the time of its intervention only and within the limits of Client's instructions, if any. The Company's sole responsibility is to its Client and this document does not exonerate parties to a transaction from exercising all their rights and obligations under the transaction documents. This document cannot be reproduced except in full, without prior written approval of the Company. Any unauthorized alteration, forgery or falsification of the content or appearance of this document is unlawful and offenders may be prosecuted to the fullest extent of the law. Unless otherwise stated the results shown in this test report refer only to the sample(s) tested.

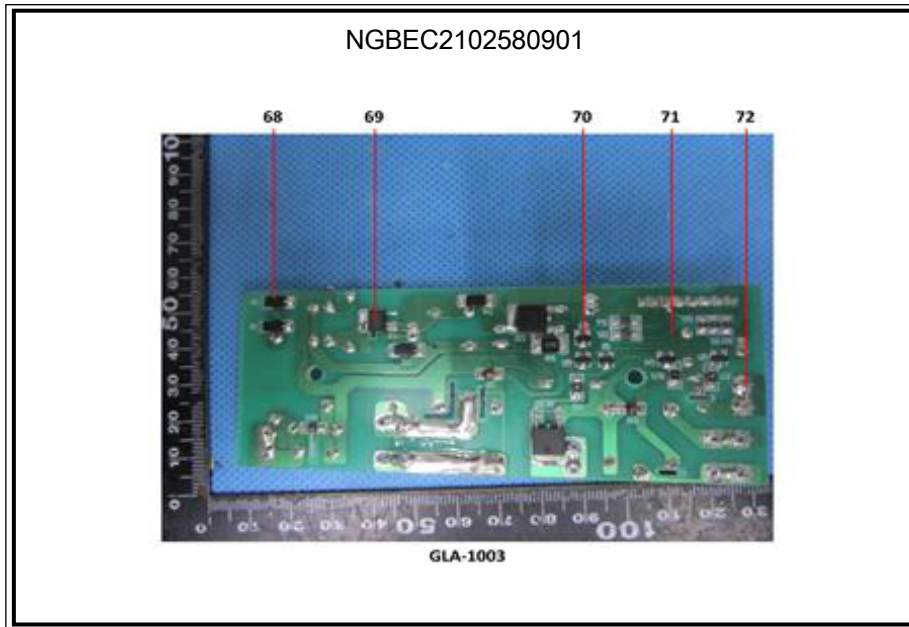
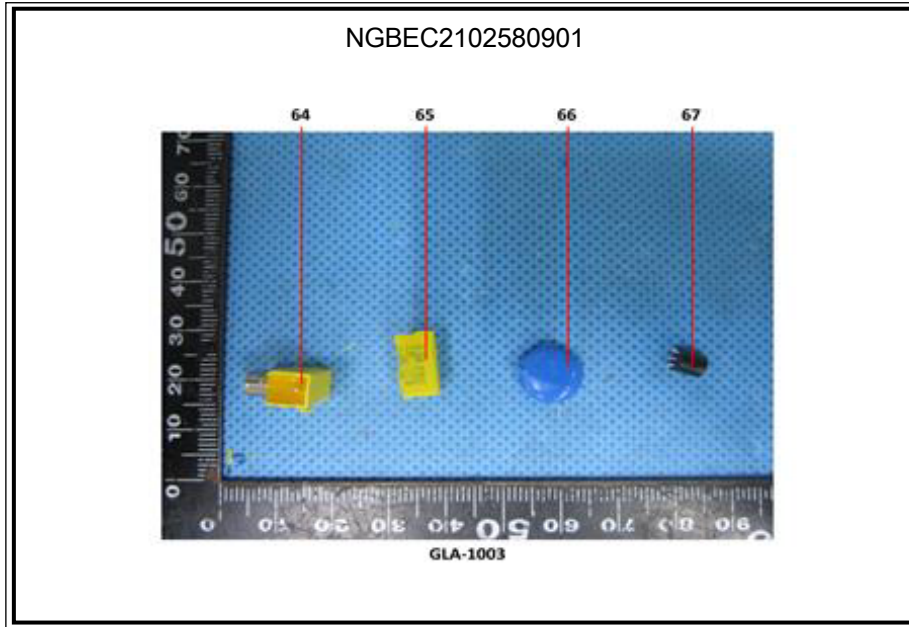
Attention: To check the authenticity of testing/inspection report & certificate, please contact us at telephone: (86-755) 8307 1443, or email: [CN.Doccheck@sgs.com](mailto:CN.Doccheck@sgs.com)





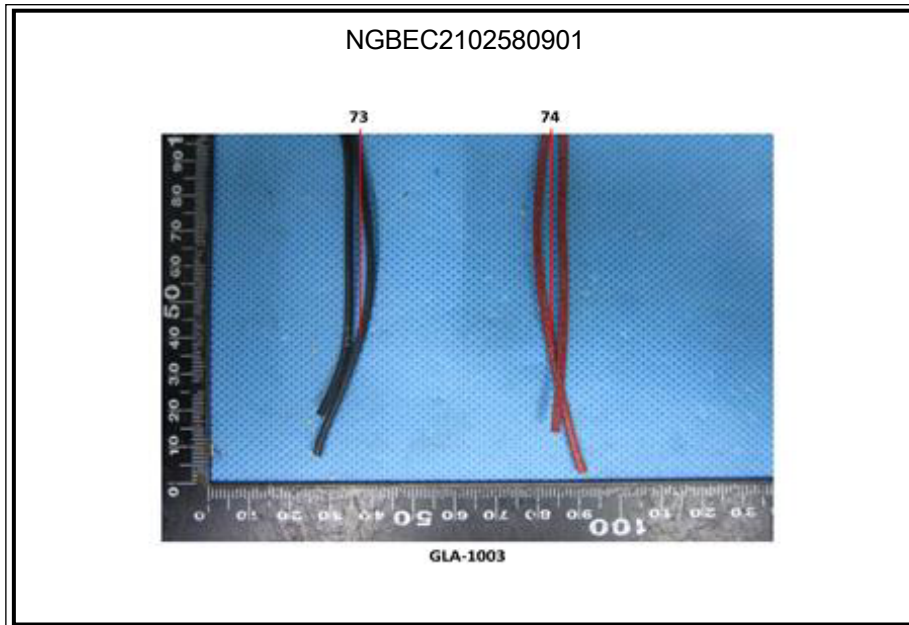
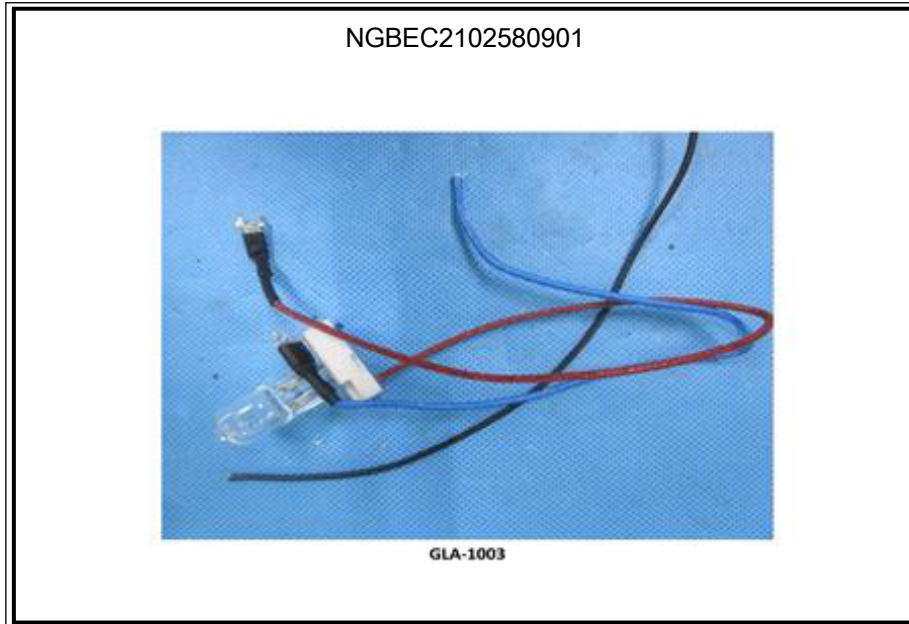
Unless otherwise agreed in writing, this document is issued by the Company subject to its General Conditions of Service printed overleaf, available on request or accessible at <http://www.sgs.com/en/Terms-and-Conditions.aspx> and, for electronic format documents, subject to Terms and Conditions for Electronic Documents at <http://www.sgs.com/en/Terms-and-Conditions/Terms-e-Document.aspx>. Attention is drawn to the limitation of liability, indemnification and jurisdiction issues defined therein. Any holder of this document is advised that information contained hereon reflects the Company's findings at the time of its intervention only and within the limits of Client's instructions, if any. The Company's sole responsibility is to its Client and this document does not exonerate parties to a transaction from exercising all their rights and obligations under the transaction documents. This document cannot be reproduced except in full, without prior written approval of the Company. Any unauthorized alteration, forgery or falsification of the content or appearance of this document is unlawful and offenders may be prosecuted to the fullest extent of the law. Unless otherwise stated the results shown in this test report refer only to the sample(s) tested.

**Attention: To check the authenticity of testing/inspection report & certificate, please contact us at telephone: (86-755) 8307 1443, or email: [CN.Doccheck@sgs.com](mailto:CN.Doccheck@sgs.com)**



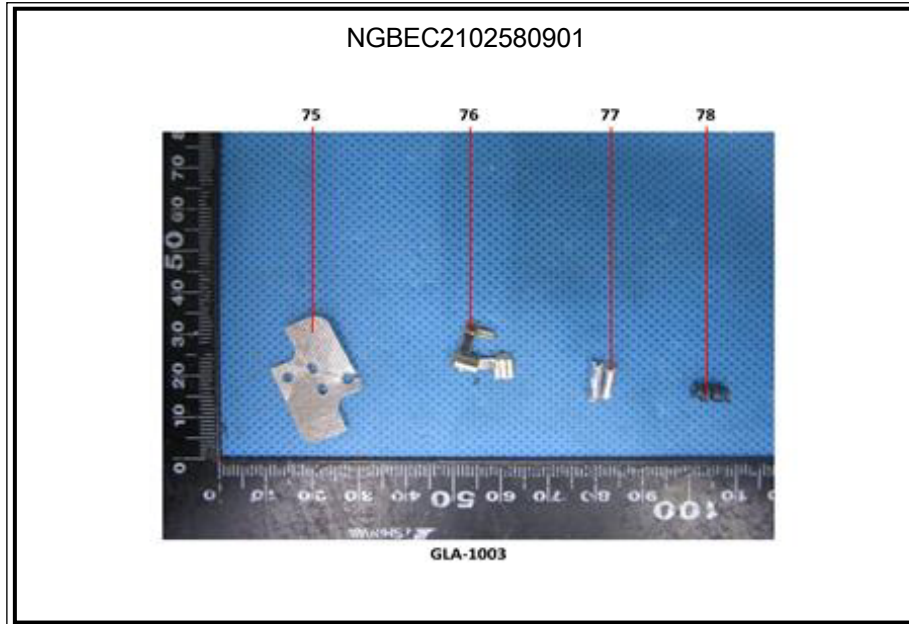
Unless otherwise agreed in writing, this document is issued by the Company subject to its General Conditions of Service printed overleaf, available on request or accessible at <http://www.sgs.com/en/Terms-and-Conditions.aspx> and, for electronic format documents, subject to Terms and Conditions for Electronic Documents at <http://www.sgs.com/en/Terms-and-Conditions/Terms-e-Document.aspx>. Attention is drawn to the limitation of liability, indemnification and jurisdiction issues defined therein. Any holder of this document is advised that information contained hereon reflects the Company's findings at the time of its intervention only and within the limits of Client's instructions, if any. The Company's sole responsibility is to its Client and this document does not exonerate parties to a transaction from exercising all their rights and obligations under the transaction documents. This document cannot be reproduced except in full, without prior written approval of the Company. Any unauthorized alteration, forgery or falsification of the content or appearance of this document is unlawful and offenders may be prosecuted to the fullest extent of the law. Unless otherwise stated the results shown in this test report refer only to the sample(s) tested.

**Attention: To check the authenticity of testing/inspection report & certificate, please contact us at telephone: (86-755) 8307 1443, or email: [CN.Doccheck@sgs.com](mailto:CN.Doccheck@sgs.com)**



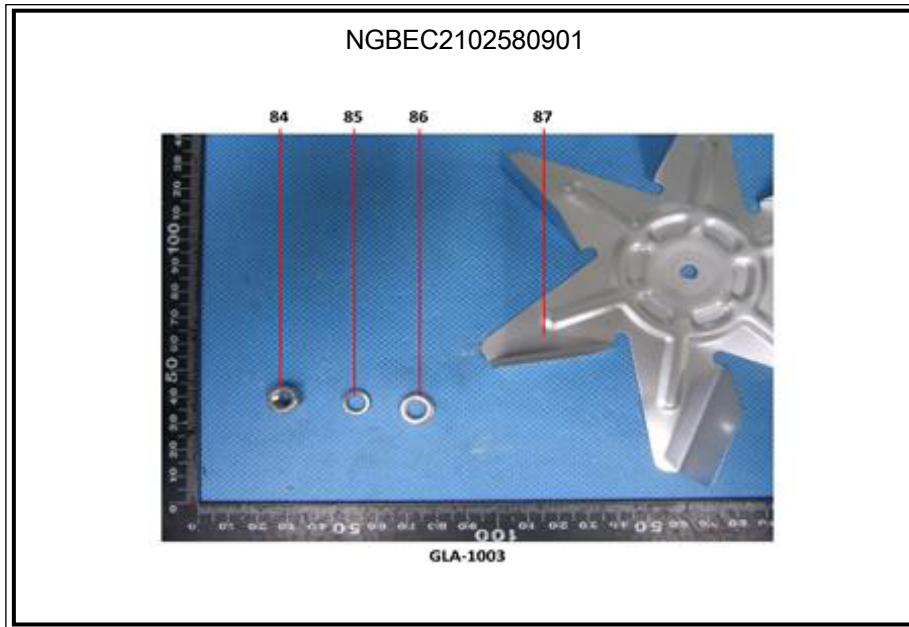
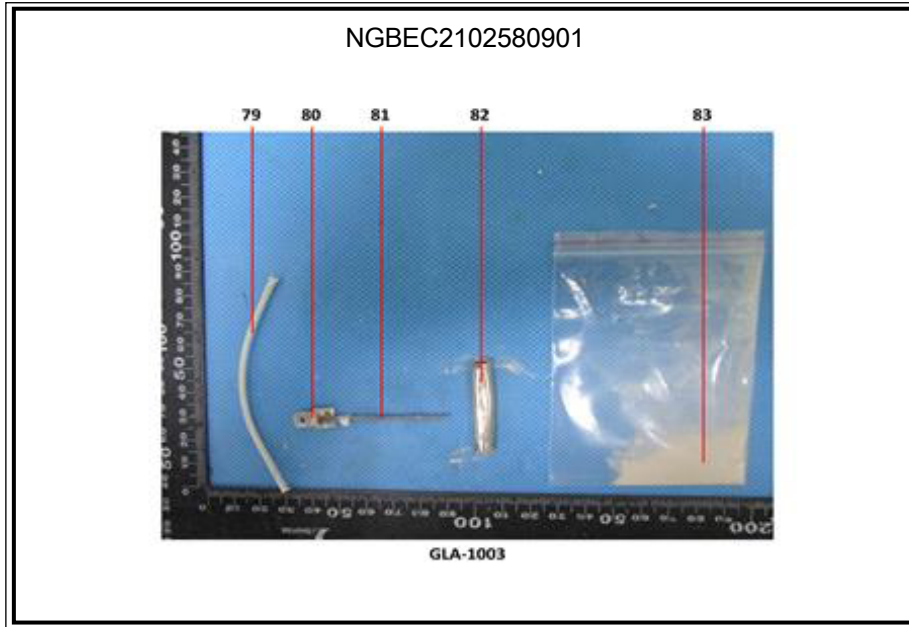
Unless otherwise agreed in writing, this document is issued by the Company subject to its General Conditions of Service printed overleaf, available on request or accessible at <http://www.sgs.com/en/Terms-and-Conditions.aspx> and, for electronic format documents, subject to Terms and Conditions for Electronic Documents at <http://www.sgs.com/en/Terms-and-Conditions/Terms-e-Documents.aspx>. Attention is drawn to the limitation of liability, indemnification and jurisdiction issues defined therein. Any holder of this document is advised that information contained hereon reflects the Company's findings at the time of its intervention only and within the limits of Client's instructions, if any. The Company's sole responsibility is to its Client and this document does not exonerate parties to a transaction from exercising all their rights and obligations under the transaction documents. This document cannot be reproduced except in full, without prior written approval of the Company. Any unauthorized alteration, forgery or falsification of the content or appearance of this document is unlawful and offenders may be prosecuted to the fullest extent of the law. Unless otherwise stated the results shown in this test report refer only to the sample(s) tested.

Attention: To check the authenticity of testing/inspection report & certificate, please contact us at telephone: (86-755) 8307 1443, or email: [CN.Doccheck@sgs.com](mailto:CN.Doccheck@sgs.com)



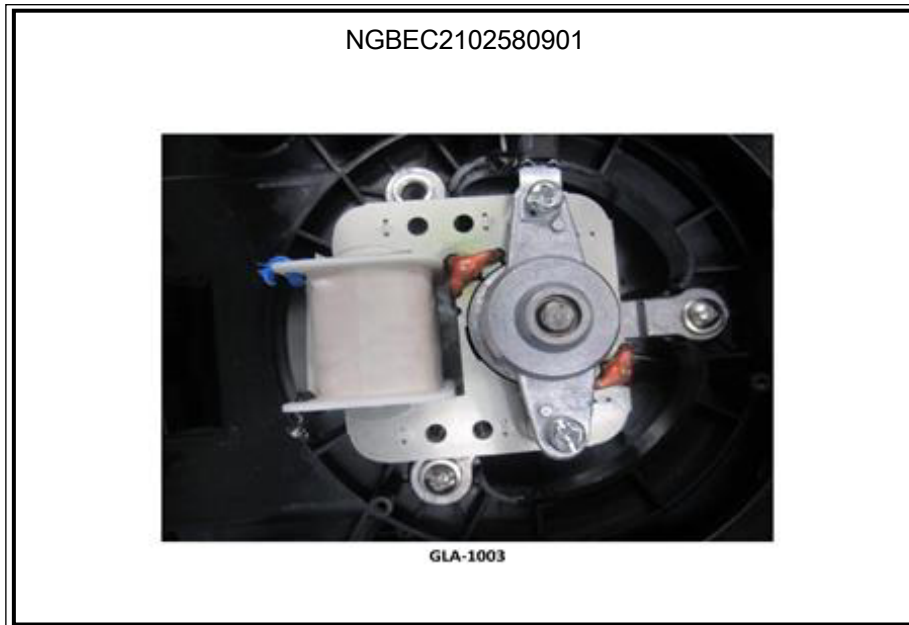
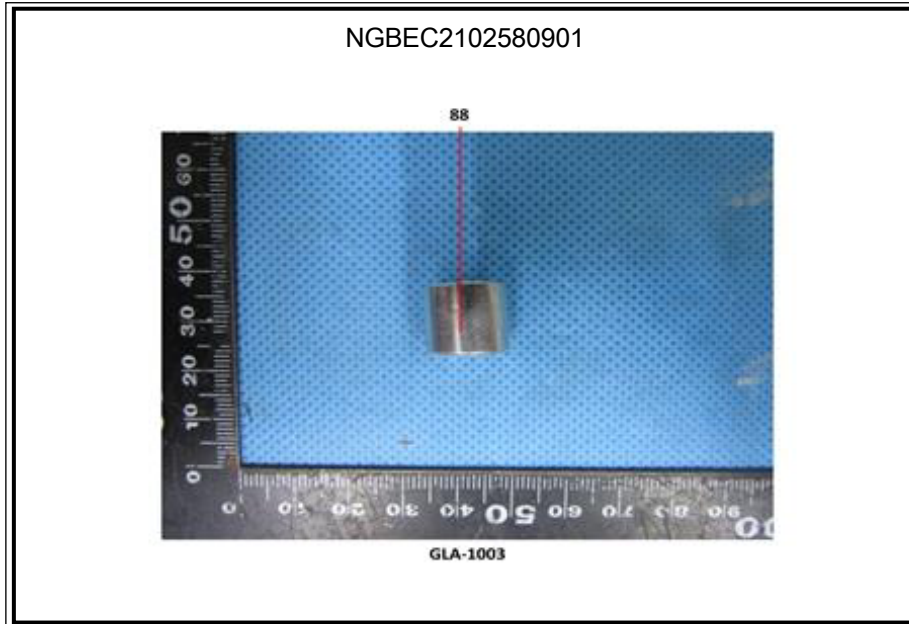
Unless otherwise agreed in writing, this document is issued by the Company subject to its General Conditions of Service printed overleaf, available on request or accessible at <http://www.sgs.com/en/Terms-and-Conditions.aspx> and, for electronic format documents, subject to Terms and Conditions for Electronic Documents at <http://www.sgs.com/en/Terms-and-Conditions/Terms-e-Document.aspx>. Attention is drawn to the limitation of liability, indemnification and jurisdiction issues defined therein. Any holder of this document is advised that information contained hereon reflects the Company's findings at the time of its intervention only and within the limits of Client's instructions, if any. The Company's sole responsibility is to its Client and this document does not exonerate parties to a transaction from exercising all their rights and obligations under the transaction documents. This document cannot be reproduced except in full, without prior written approval of the Company. Any unauthorized alteration, forgery or falsification of the content or appearance of this document is unlawful and offenders may be prosecuted to the fullest extent of the law. Unless otherwise stated the results shown in this test report refer only to the sample(s) tested.

**Attention: To check the authenticity of testing/inspection report & certificate, please contact us at telephone: (86-755) 8307 1443, or email: [CN.Doccheck@sgs.com](mailto:CN.Doccheck@sgs.com)**



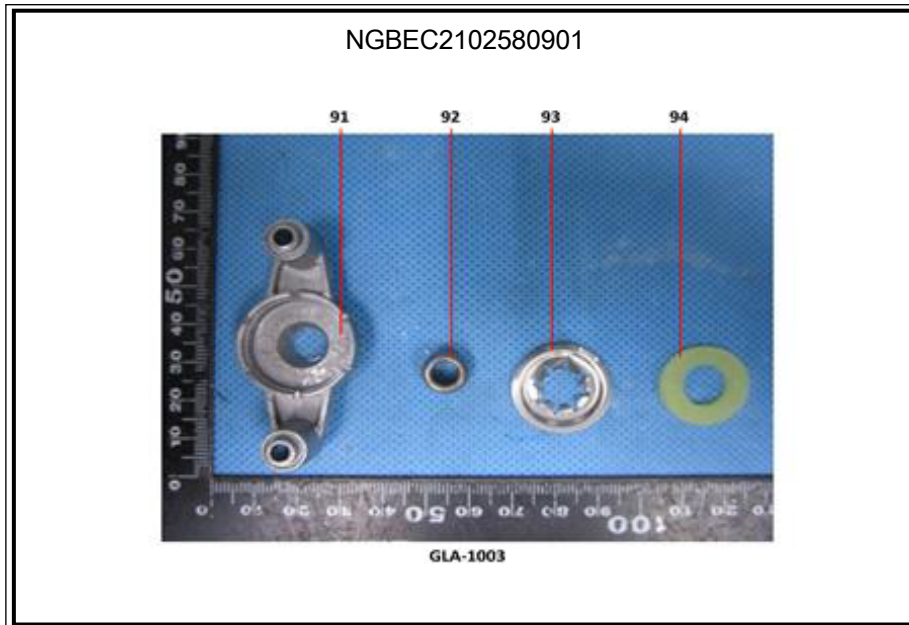
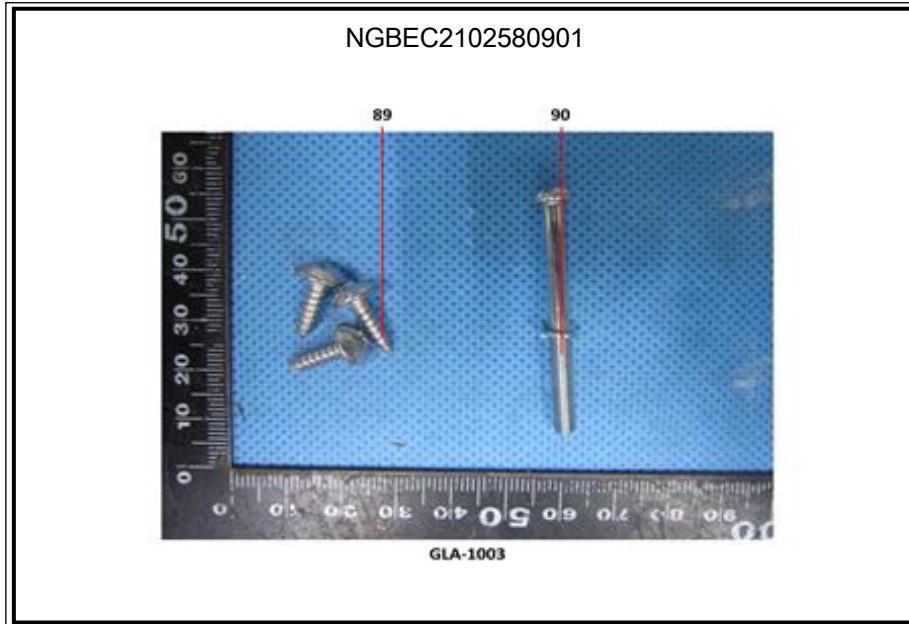
Unless otherwise agreed in writing, this document is issued by the Company subject to its General Conditions of Service printed overleaf, available on request or accessible at <http://www.sgs.com/en/Terms-and-Conditions.aspx> and, for electronic format documents, subject to Terms and Conditions for Electronic Documents at <http://www.sgs.com/en/Terms-and-Conditions/Terms-e-Document.aspx>. Attention is drawn to the limitation of liability, indemnification and jurisdiction issues defined therein. Any holder of this document is advised that information contained hereon reflects the Company's findings at the time of its intervention only and within the limits of Client's instructions, if any. The Company's sole responsibility is to its Client and this document does not exonerate parties to a transaction from exercising all their rights and obligations under the transaction documents. This document cannot be reproduced except in full, without prior written approval of the Company. Any unauthorized alteration, forgery or falsification of the content or appearance of this document is unlawful and offenders may be prosecuted to the fullest extent of the law. Unless otherwise stated the results shown in this test report refer only to the sample(s) tested.

**Attention: To check the authenticity of testing/inspection report & certificate, please contact us at telephone: (86-755) 8307 1443, or email: [CN.Doccheck@sgs.com](mailto:CN.Doccheck@sgs.com)**



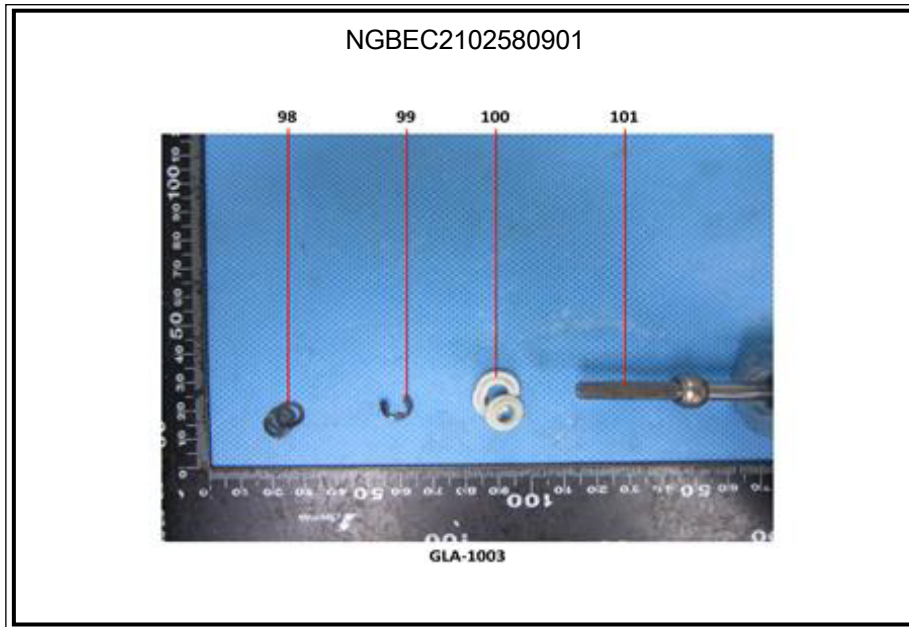
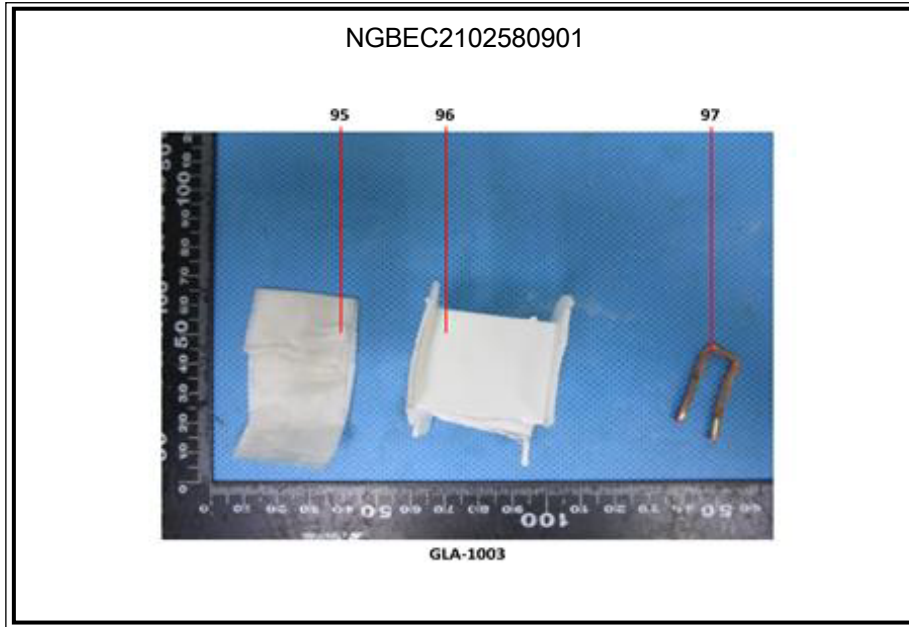
Unless otherwise agreed in writing, this document is issued by the Company subject to its General Conditions of Service printed overleaf, available on request or accessible at <http://www.sgs.com/en/Terms-and-Conditions.aspx> and, for electronic format documents, subject to Terms and Conditions for Electronic Documents at <http://www.sgs.com/en/Terms-and-Conditions/Terms-e-Document.aspx>. Attention is drawn to the limitation of liability, indemnification and jurisdiction issues defined therein. Any holder of this document is advised that information contained hereon reflects the Company's findings at the time of its intervention only and within the limits of Client's instructions, if any. The Company's sole responsibility is to its Client and this document does not exonerate parties to a transaction from exercising all their rights and obligations under the transaction documents. This document cannot be reproduced except in full, without prior written approval of the Company. Any unauthorized alteration, forgery or falsification of the content or appearance of this document is unlawful and offenders may be prosecuted to the fullest extent of the law. Unless otherwise stated the results shown in this test report refer only to the sample(s) tested.

**Attention: To check the authenticity of testing/inspection report & certificate, please contact us at telephone: (86-755) 8307 1443, or email: [CN.Doccheck@sgs.com](mailto:CN.Doccheck@sgs.com)**



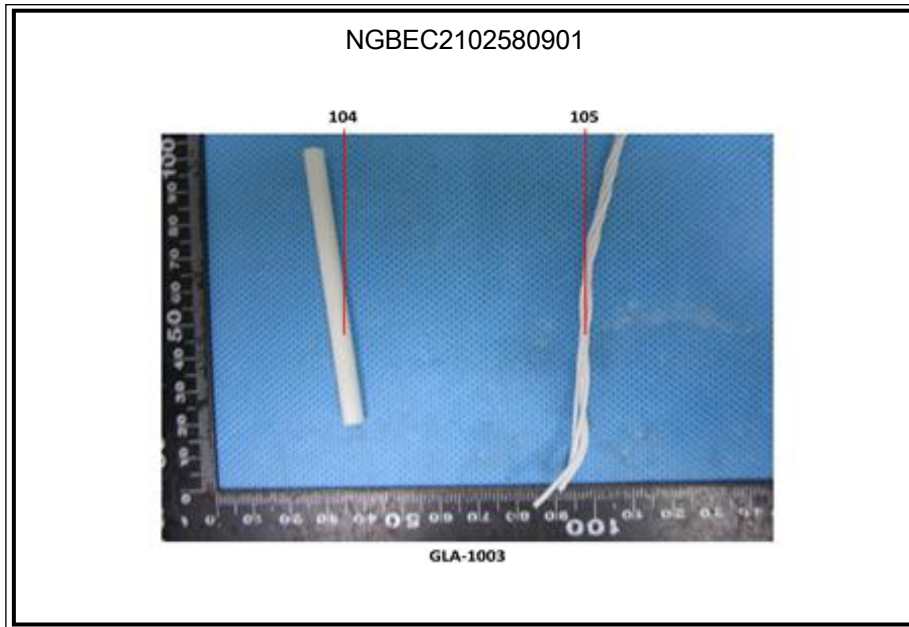
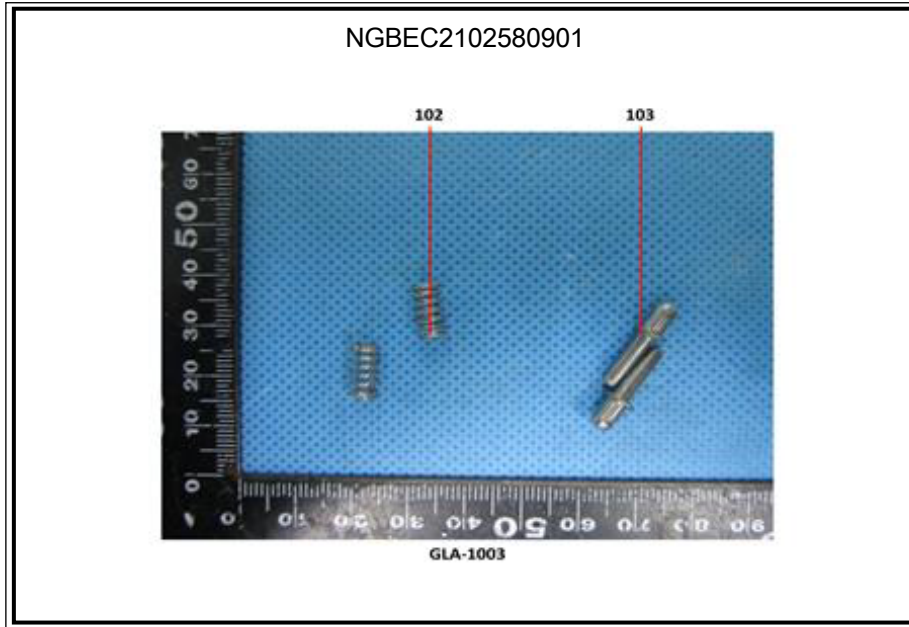
Unless otherwise agreed in writing, this document is issued by the Company subject to its General Conditions of Service printed overleaf, available on request or accessible at <http://www.sgs.com/en/Terms-and-Conditions.aspx> and, for electronic format documents, subject to Terms and Conditions for Electronic Documents at <http://www.sgs.com/en/Terms-and-Conditions/Terms-e-Document.aspx>. Attention is drawn to the limitation of liability, indemnification and jurisdiction issues defined therein. Any holder of this document is advised that information contained hereon reflects the Company's findings at the time of its intervention only and within the limits of Client's instructions, if any. The Company's sole responsibility is to its Client and this document does not exonerate parties to a transaction from exercising all their rights and obligations under the transaction documents. This document cannot be reproduced except in full, without prior written approval of the Company. Any unauthorized alteration, forgery or falsification of the content or appearance of this document is unlawful and offenders may be prosecuted to the fullest extent of the law. Unless otherwise stated the results shown in this test report refer only to the sample(s) tested.

**Attention: To check the authenticity of testing/inspection report & certificate, please contact us at telephone: (86-755) 8307 1443, or email: [CN.Doccheck@sgs.com](mailto:CN.Doccheck@sgs.com)**



Unless otherwise agreed in writing, this document is issued by the Company subject to its General Conditions of Service printed overleaf, available on request or accessible at <http://www.sgs.com/en/Terms-and-Conditions.aspx> and, for electronic format documents, subject to Terms and Conditions for Electronic Documents at <http://www.sgs.com/en/Terms-and-Conditions/Terms-e-Document.aspx>. Attention is drawn to the limitation of liability, indemnification and jurisdiction issues defined therein. Any holder of this document is advised that information contained hereon reflects the Company's findings at the time of its intervention only and within the limits of Client's instructions, if any. The Company's sole responsibility is to its Client and this document does not exonerate parties to a transaction from exercising all their rights and obligations under the transaction documents. This document cannot be reproduced except in full, without prior written approval of the Company. Any unauthorized alteration, forgery or falsification of the content or appearance of this document is unlawful and offenders may be prosecuted to the fullest extent of the law. Unless otherwise stated the results shown in this test report refer only to the sample(s) tested.

Attention: To check the authenticity of testing/inspection report & certificate, please contact us at telephone: (86-755) 8307 1443, or email: [CN.Doccheck@sgs.com](mailto:CN.Doccheck@sgs.com)



SGS authenticate the photo on original report only

\*\*\* End of Report \*\*\*



Unless otherwise agreed in writing, this document is issued by the Company subject to its General Conditions of Service printed overleaf, available on request or accessible at <http://www.sgs.com/en/Terms-and-Conditions.aspx> and, for electronic format documents, subject to Terms and Conditions for Electronic Documents at <http://www.sgs.com/en/Terms-and-Conditions/Terms-e-Document.aspx>. Attention is drawn to the limitation of liability, indemnification and jurisdiction issues defined therein. Any holder of this document is advised that information contained hereon reflects the Company's findings at the time of its intervention only and within the limits of Client's instructions, if any. The Company's sole responsibility is to its Client and this document does not exonerate parties to a transaction from exercising all their rights and obligations under the transaction documents. This document cannot be reproduced except in full, without prior written approval of the Company. Any unauthorized alteration, forgery or falsification of the content or appearance of this document is unlawful and offenders may be prosecuted to the fullest extent of the law. Unless otherwise stated the results shown in this test report refer only to the sample(s) tested.

Attention: To check the authenticity of testing/inspection report & certificate, please contact us at telephone: (86-755) 8307 1443, or email: [CN.Doccheck@sgs.com](mailto:CN.Doccheck@sgs.com)