

Report No.: 4929588.00-35

---

## Construction Assessment Report (On-Site)

To : Sotech Tel : +334 8345 4732  
Attn : Alain / Michele Fax : +48 939 357  
Supplier : J. Mulchand & Sons Ltd.  
Manufacturer Name : Ningbo Klinsmann Intelligent Technology Co., Ltd.  
Manufacturer Location : No.377, Yayuan South Road, Shiqi Street, Haishu District,  
Ningbo City, Zhejiang Province, China  
Order No. : 2024309 (82803)  
Product description : Robot Vacuum Cleaner  
Model number : TAR-2036 / TAR-2031  
(KRV305B)



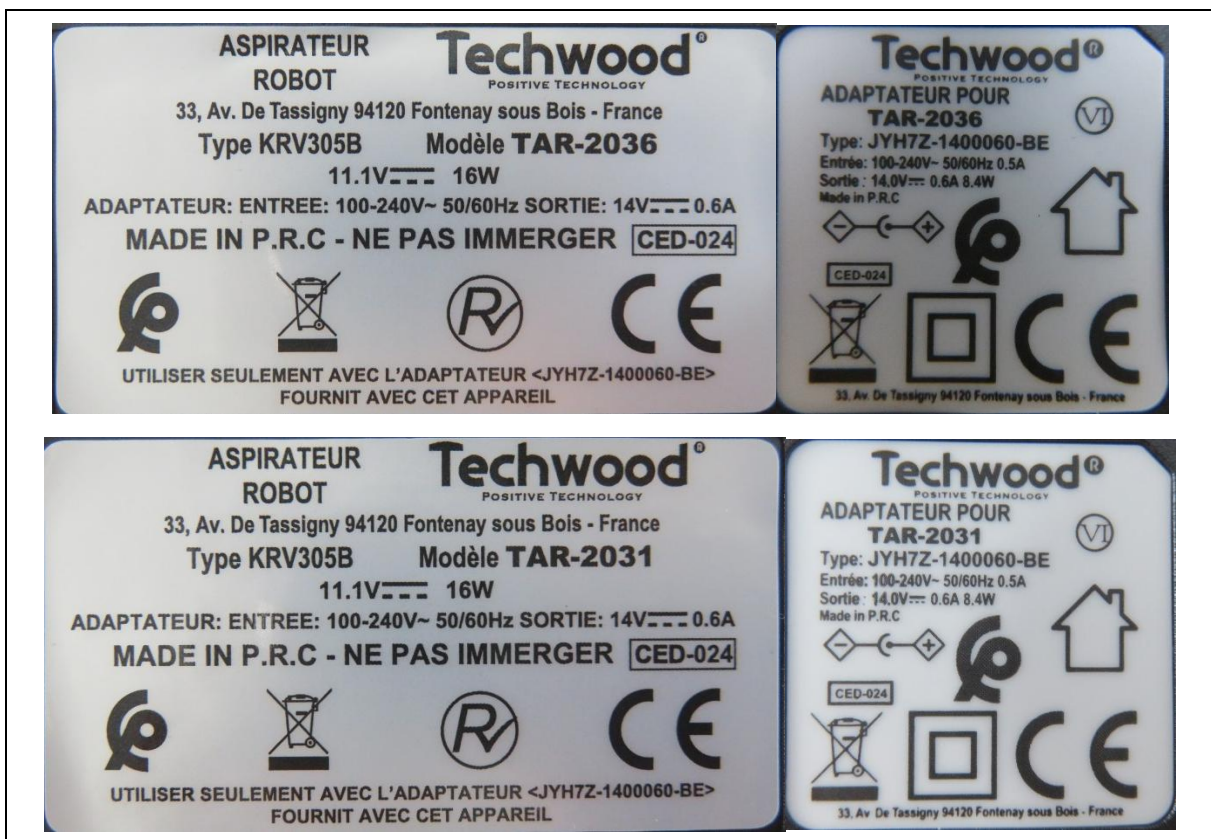
Applicable standards : EN 60335-1:2012+A11:2014+A13:2017+A1:2019+  
A2:2019+A14:2019+A15:2021  
EN 60335-2-2:2010 + A11:2012 + A1:2013  
Documents provided : Test report No. CTB230915018S issued by CTB on date  
2023-09-25  
Samples picked by : DEKRA engineer on : 2024-12-12  
Clauses checked : 7, 8, 16.3, 20-29  
Tests performed : Construction check on 5 samples.  
This Document includes : 20 pages  
Date of Construction check : 2024-12-12

**Result : PASS**

**PRODUCT DATA**

Rated voltage	:	110-240V~ for adaptor	--
Rated current / power	:	14V DC 0.6A	--
Rated frequency	:	50/60Hz	--
Degree of protection	:	IPX0	--
Accessories provided	:	Yes	Refer to photos
Class	:	Class II for adaptor	--
Others	:	Rated operation: continuous	--

**RATING LABEL & WARNING LABEL**



**LIST OF COMPONENTS**

Object/Part No.	Manufacturer/ Trademark	Type/Model	Technical Data	Mark(s) of Conformity	Component Verification
Adaptor	Techwood	JYH7Z- 1400060-BE	I/P: 100-240V~, 50/60Hz, 0.5A O/P: 14Vdc, 600mA	Tested with appliance	Pass
Wire for adaptor	BOSITAI	2468	24AWG, 300V, 80°C	Tested with appliance/UL	Pass
PCB	--	KRV305	--	Tested with appliance	Pass
Battery pack	KAN	18650(3S1P)	11.1V, 1500mAh, 16.65Wh	Tested with appliance	Pass
Power switch	--	KCD1	250V~, 6A	Tested with appliance	Pass
Side sweeping motor	FEIQUAN	FK-280SA- 11385V	DC14.4V	Tested with appliance	Pass
Wheel motor	FEIQUAN	FD-280SD- 17195V	DC11.0V	Tested with appliance	Pass
Vacuum motor	FEIQUAN	FD-280SD- 19109V	DC11.0V	Tested with appliance	Pass
Remarks: Nil.					

**RESULTS**

CLAUSES	CONTENTS	PASS	FAIL	REMARK	N/A
7	Markings and instructions	X			
8	Protection against access to live parts	X			
16.3	Electric strength	X			
20	Stability and mechanical hazards	X			
21	Mechanical strength	X			
22	Construction	X			
23	Internal wiring	X			
24	Components	X			
25	Supply connection and external flexible cords	X			
26	Terminals for external conductors	X			
27	Provision for earthing	X			
28	Screws and connections	X			
29	Creepage distances, clearances and distances through insulation	X			

(Note: This construction review only refers to a construction analysis without any power on test and limited use of tool and equipments.)

**RESULTS DESCRIPTION**

**Clause**

<i>Description of the Remark</i>	<i>Picture of the remark</i>
Nil.	

<i>Note: Description of the Remark</i>	<i>Picture of the remark</i>
<b>N1:</b> The sample size was 5pcs but the construction check was performed on the first sample and the rest 4pcs for comparison check against the first sample.	

**Please note that every statement made in this report is only valid for the samples tested and reported herein.**

Trusting to have informed you sufficiently, we remain,  
With best regards

DEKRA Testing and Certification (Shanghai) Ltd. Shenzhen Branch

**Engineer name** : Ivan CHEN

**Engineer signature** :



**Reviewed by** : Daniel

**Reviewer signature** :



**ANNEX 1**

**EN 60335-1 and EN 60335-2-2 v1.0**


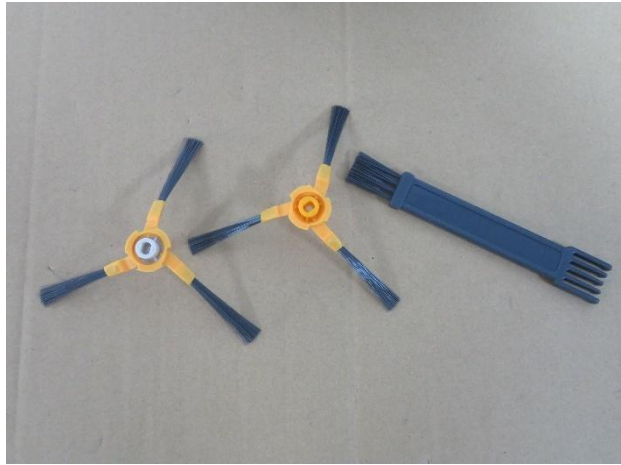



CLAUSES	Clauses which are not covered by this construction check
8	Clause 8.1.4
20	Clause 20.Z101
21	Clause 21.2 Clause 21.101-21.105 Clause 21.Z101
22	1. Clause 22.3 2. Clause 22.5 3. Clause 22.6 4. Clause 22.7 5. Clause 22.16 6. Clause 22.18 7. Clause 22.32 8. Clause 22.42 9. Clause 22.47 10. Clause 22.48
23	Clause 23.3
24	Clause 24.5 Clause 24.6
25	Clause 25.14
27	Clause 27.5

**Note:**

- Use simple tools for construction as below: Test probe, impact hammer, torque screw driver, pull and push tester less than 100 N, caliper and hi-pot tester**

**ANNEX 2**

**Product photos**

Item TAR-2036	
	
1. Instruction manual	2. Accessories
	
3. Adaptor	4. Rating label of adaptor
	
5. Product view	6. Product view



7. Product view



8. Product view



9. Product view



10. Product view



11. Product details



12. Product details



13. Product details



14. Product details



15. Product details



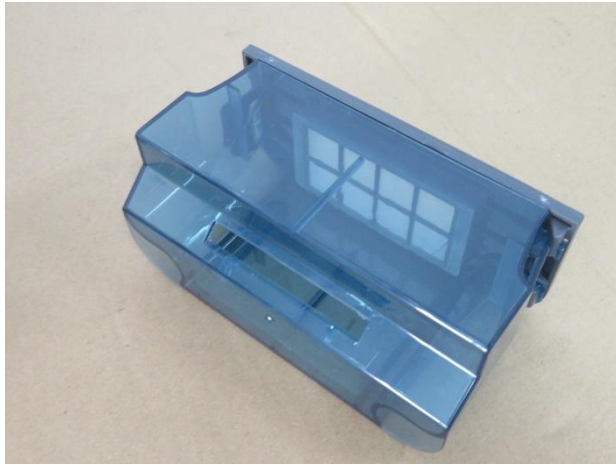
16. Product details

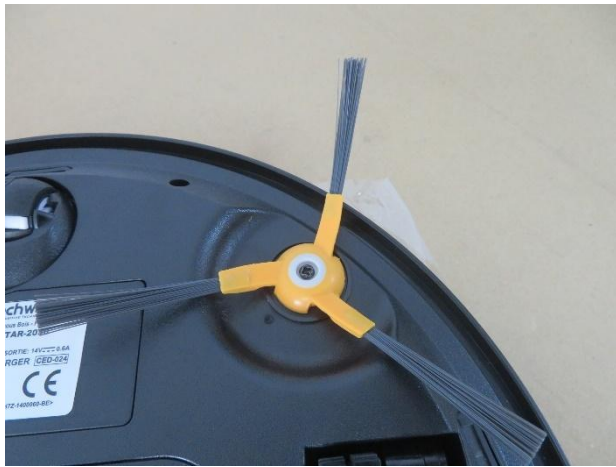


17. Product details



18. Product details

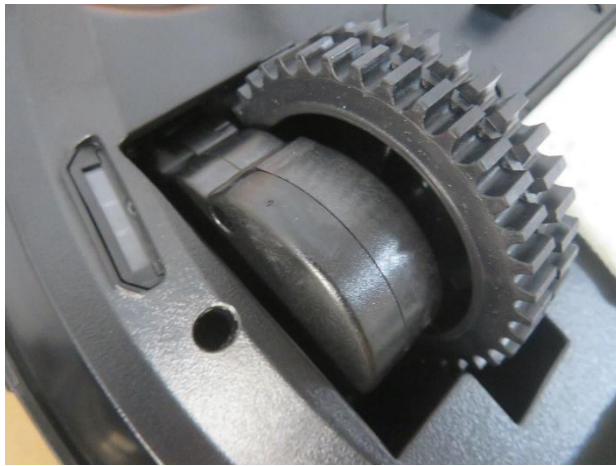
**19. Product details****20. Product details****21. Product details****22. Product details****23. Product details****24. Product details**



25. Product details



26. Rating label



27. Product details



28. Rating label



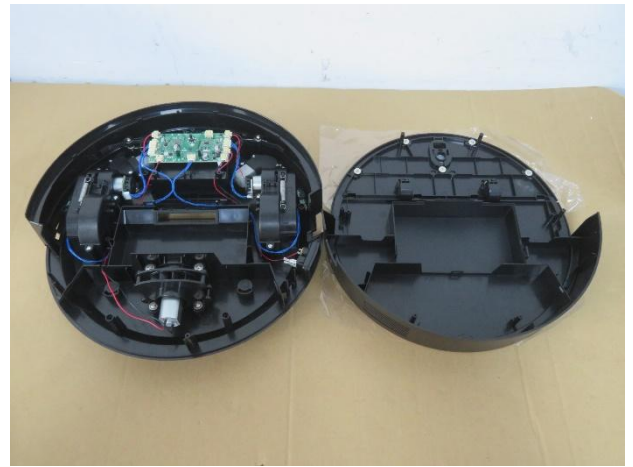
29. Product details



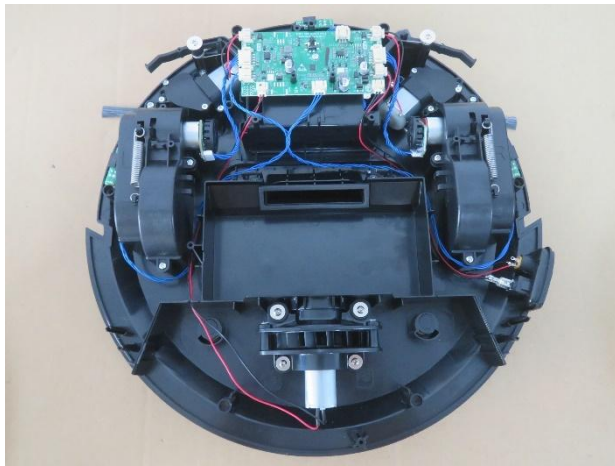
30. Product details



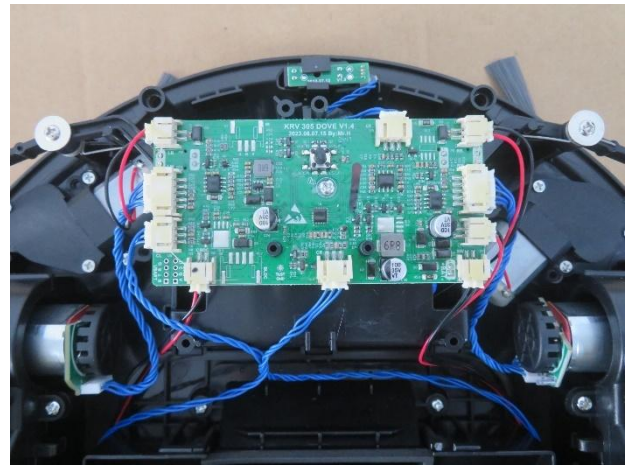
31. Rating label



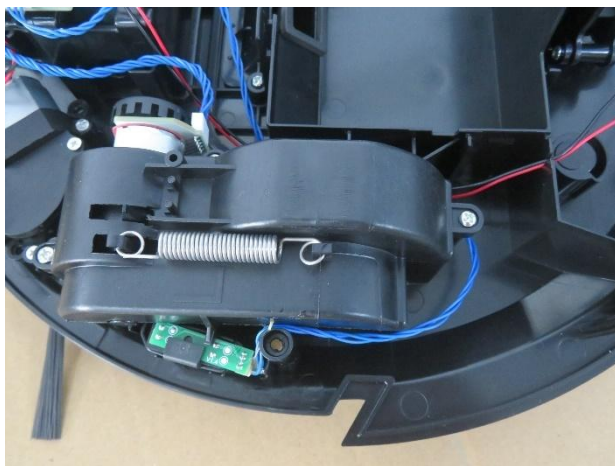
32. Product inner view



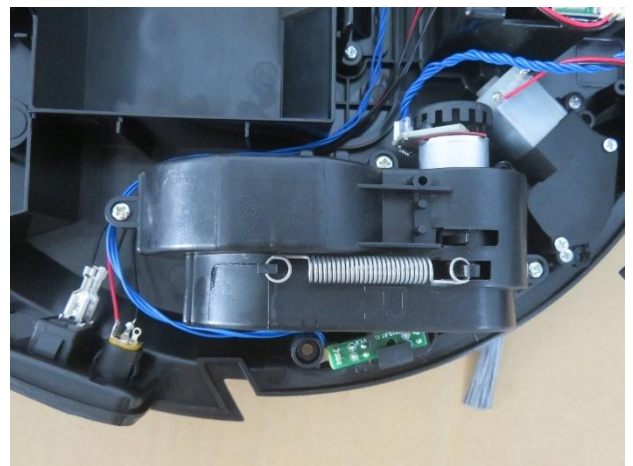
33. Product inner view



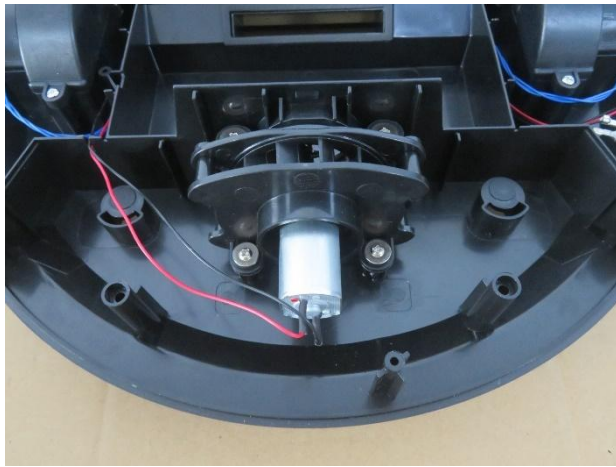
34. Product inner view



35. Product inner view



36. Product inner view



37. Product inner view



38. Wheel



39. Wheel



40. Wheel motor



41. Side brush motor



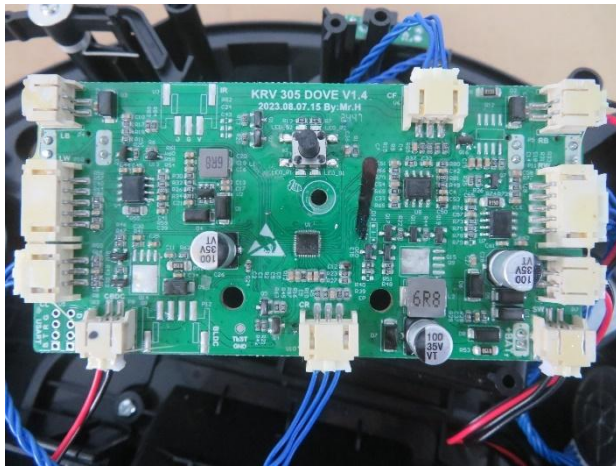
42. Side brush motor



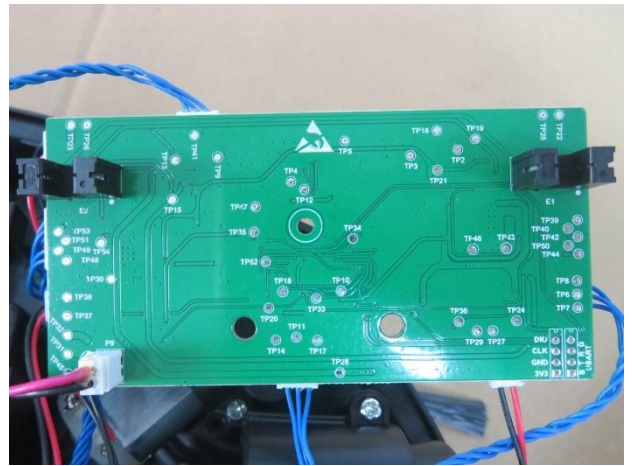
43. Vacuum motor



44. Vacuum motor



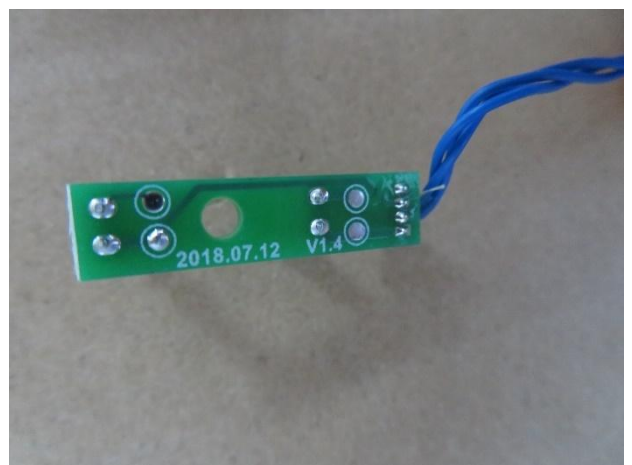
45. Main PCB



46. Main PCB



47. Sensor PCB



48. Sensor PCB

Report No.: 4929588.00-35



49. Battery

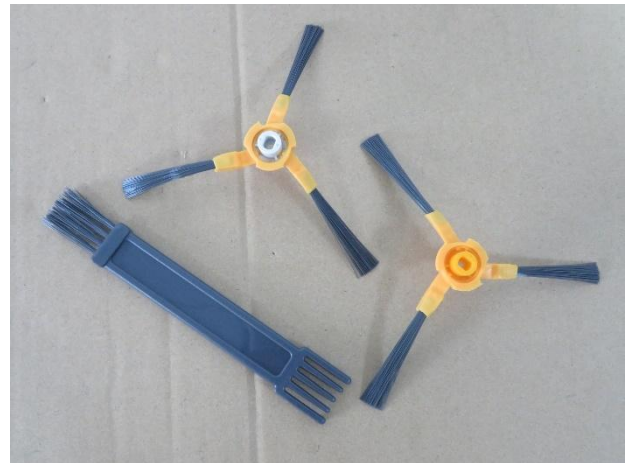


50. Switch

Item TAR-2031



51. Instruction manual



52. Accessories



53. Adaptor



54. Rating label of adaptor



55. Product view



56. Product view



57. Product view



58. Product view



59. Product view



60. Product view



61. Product details



62. Product details



63. Product details



64. Product details



65. Product details



66. Product details



67. Product details



68. Product details



69. Product details



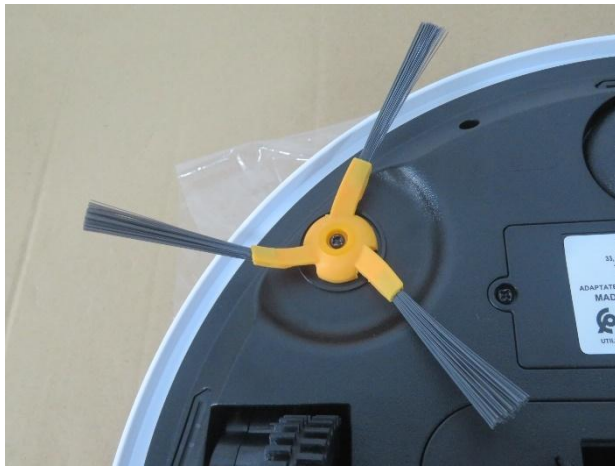
70. Product details



71. Product details



72. Product details



73. Product details



74. Product details



75. Product details



76. Rating label



77. Product details



78. Rating label



79. Product details



80. Product details



81. Product details



82. Rating label

--- END OF REPORT---