




**BUREAU
VERITAS**

TEST REPORT N°: ASJY-EGZ-P22030077-1-R1

EMC TEST REPORT

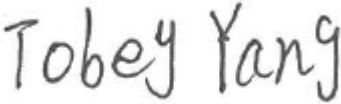
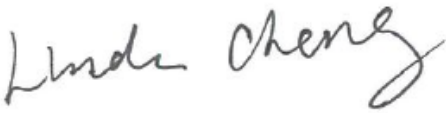
Applicant	
Address	

Factory Name		 Model: YF-ST1628-6
Address		
Product	Electric Fan	
Brand Name	N/A	
Model	Refer to page 3	
Electrical Rating	Refer to page 5	
Date of tests	---	

The submitted samples of the above equipment have been tested according to the requirements of the following standards:

EN IEC 55014-1:2021
EN IEC 55014-2:2021
EN IEC 61000-3-2:2019+A1:2021
EN 61000-3-3:2013+A1:2019+A2:2021

CONCLUSION: The submitted sample was found to COMPLY with the test requirement

Prepared by Tobey YANG Testing Engineer / EMC Department	Approved by Linda CHENG Project Engineer / EMC Department
	
Date: October 10, 2023	Date: October 10, 2023

This report is governed by, and incorporates by reference, the Conditions of Testing as posted at the date of issuance of this report at <http://www.bureauveritas.com/home/about-us/our-business/cps/about-us/terms-conditions/> and is intended for your exclusive use. Any copying or replication of this report to or for any other person or entity, or use of our name or trademark, is permitted only with our prior written permission. This report sets forth our findings solely with respect to the test samples identified herein. The results set forth in this report are not indicative or representative of the quality or characteristics of the lot from which a test sample was taken or any similar or identical product unless specifically and expressly noted. Our report includes all of the tests requested by you and the results thereof based upon the information that you provided to us. Measurement uncertainty is only provided upon request for accredited tests. Statements of conformity are based on simple acceptance criteria without taking measurement uncertainty into account, unless otherwise requested in writing. You have 60 days from date of issuance of this report to notify us of any material error or omission caused by our negligence or if you require measurement uncertainty; provided, however, that such notice shall be in writing and shall specifically address the issue you wish to raise. A failure to raise such issue within the prescribed time shall constitute your unqualified acceptance of the completeness of this report, the tests conducted and the correctness of the report contents.



**BUREAU
VERITAS**

TEST REPORT N°: ASJY-EGZ-P22030077-1-R1

1 TESTING PROGRAM

Emission standard EN IEC 55014-1:2021

- Measurement of the disturbance voltage levels.
- Measurement of the discontinuous disturbance levels.
- Measurement of the disturbance power levels.
- Measurement of the radiated disturbance levels.

Immunity standard EN IEC 55014-2:2021

- Immunity to electrostatic discharges - publication IEC 61000-4-2.
- Immunity to fast transients/bursts - publication IEC 61000-4-4.
- Immunity to conducted disturbances induced by radio-frequency fields - publication IEC 61000-4-6.
- Immunity to radiated radio-frequency electromagnetic field with amplitude modulation - publication IEC 61000-4-3.
- Immunity to surges - publication IEC 61000-4-5.
- Immunity to voltage dips -publication IEC 61000-4-11.
- Immunity to voltage interruptions - publication IEC 61000-4-11.

Emission standard EN IEC 61000-3-2:2019+A1:2021

- Measurement of the harmonic currents.

Emission standard EN 61000-3-3:2013+A1:2019+A2:2021

- Measurement of the voltage fluctuations and flickers.

Special Comment : Based on report ASJY-EGZ-P22030077-1, update standards, no additional test were needed, all test data were kept in this report.



**BUREAU
VERITAS**

TEST REPORT N°: ASJY-EGZ-P22030077-1-R1

2 GENERAL PRODUCT INFORMATION

Model list:

YF-ST1227, YF-ST1228, YF-ST1238, YF-ST1627-1, YF-ST1628-1, YF-ST1638-1, YF-ST1627, YF-ST1628, YF-ST1638, YF-ST1227-6, YF-ST1228-6, YF-ST1238-6, YF-ST1227-7, YF-ST1228-7, YF-ST1238-7, **YF-ST1627-5**, YF-ST1628-5, **YF-ST1638-5**, YF-ST1627-7, YF-ST1628-7, YF-ST1638-7, YF-ST1628-6, YF-ST1627-6, YF-ST1638-6, YF-DE601, FT-15, YF-DE602, YF-DE603, YF-DE901, FT-23E, YF-DE902, YF-DE903, YF-DE904, YF-DE905, YF-DE906, YF-DE907, YF-DE908, YF-DE909, YF-DE1601-1, YF-DE1602-1, YF-DE1603-1, YF-DE1604-1, YF-DE1605-1, YF-DE1606-1, YF-DE1201, FT-30E, YF-DE1202, MTF-121, FT-30, YF-DE1203, YF-DE1204, FT-30B, YF-DE1205, YF-DE1206, YF-ST1201, YF-ST1202, YF-ST1203, YF-ST1204, YF-ST1205, YF-ST1206, YF-ST1207, YF-ST1208, YF-ST1209, YF-ST1210, YF-ST1211, YF-ST1214, YF-ST1216, YF-ST1217, YF-ST1218, YF-ST1219, YF-ST1220, YF-ST1221, YF-ST1222, YF-ST1223, YF-ST1224, YF-ST1225, YF-ST1226, YF-ST1229, YF-ST1230, YF-ST1231, YF-ST1601-1, YF-ST1602-1, YF-ST1603-1, YF-ST1604-1, YF-ST1605-1, YF-ST1606-1, YF-ST1607-1, YF-ST1608-1, YF-ST1609-1, YF-ST1610-1, YF-ST1611-1, YF-ST1614-1, YF-ST1616-1, YF-ST1617-1, YF-ST1618-1, YF-ST1619-1, YF-ST1620-1, YF-ST1621-1, YF-ST1622-1, YF-ST1623-1, YF-ST1624-1, YF-ST1625-1, YF-ST1626-1, YF-ST1629-1, YF-ST1630-1, YF-ST1631-1, YF-ST1601, YF-DE1601, FT-40E, YF-DE1602, MTF-161, FT-40, YF-DE1603, YF-DE1604, FT-40B, YF-DE1605, YF-DE1606, YF-DE1201-6, YF-DE1202-6, YF-DE1203-6, MTF-126, YF-DE1204-6, YF-DE1205-6, YF-DE1206-6, YF-DE1201-7, YF-DE1202-7, MTF-12, YF-DE1203-7, YF-DE1204-7, YF-DE1205-7, YF-DE1206-7, FS-40C, YF-ST1602, YF-ST1603, FS-40A, YF-ST1604, FS-40B, YF-ST1605, FS-40, YF-ST1606, YF-ST1607, YF-ST1608, YF-ST1609, YF-ST1610, YF-ST1611, YF-ST1614, YF-ST1616, YF-ST1617, YF-ST1618, YF-ST1619, YF-ST1620, YF-ST1621, YF-ST1622, YF-ST1623, YF-ST1624, YF-ST1625, YF-ST1626, FS-40R, YF-ST1629, YF-ST1630, YF-ST1631, YF-ST1201-6, YF-ST1202-6, YF-ST1203-6, YF-ST1204-6, YF-ST1205-6, YF-ST1206-6, YF-ST1207-6, YF-ST1208-6, YF-ST1209-6, YF-ST1210-6, YF-ST1211-6, YF-ST1214-6, YF-ST1216-6, YF-ST1217-6, YF-ST1218-6, YF-ST1219-6, YF-ST1220-6, YF-ST1221-6, YF-ST1222-6, YF-ST1223-6, YF-ST1224-6, YF-ST1225-6, YF-ST1226-6, YF-ST1229-6, YF-ST1230-6, YF-ST1231-6, YF-ST1201-7, YF-ST1202-7, YF-ST1203-7, YF-ST1204-7, YF-ST1205-7, YF-ST1206-7, YF-ST1207-7, YF-ST1208-7, YF-ST1209-7, YF-ST1210-7, YF-ST1211-7, YF-ST1214-7, YF-ST1216-7, YF-ST1217-7, YF-ST1218-7, YF-ST1219-7, YF-ST1220-7, YF-ST1221-7, YF-ST1222-7, YF-ST1223-7, YF-ST1224-7, YF-ST1225-7, YF-ST1226-7, YF-ST1229-7, YF-ST1230-7, YF-ST1231-7, YF-DE1601-5, YF-DE1602-5, YF-DE1603-5, YF-DE1604-5, YF-DE1605-5, YF-DE1606-5, YF-ST1602-5, YF-ST1605-5, YF-ST1606-5, YF-ST1607-5, YF-ST1608-5, YF-ST1609-5, YF-ST1619-5, YF-ST1622-5, YF-ST1624-5, YF-ST1631-5, **YF-DE1601-7**, YF-DE1602-7, MTF-165, YF-DE1603-7, MTF-2666, YF-DE1604-7, YF-DE1605-7, YF-DE1606-7, YF-ST1602-7, YF-ST1605-7, YF-ST1606-7, MSF-1665, YF-ST1607-7, YF-ST1608-7, YF-ST1609-7, YF-ST1619-7, YF-ST1622-7, YF-ST1624-7, **YF-ST1631-7**, **YF-DE1601-6**, YF-DE1602-6, YF-DE1603-6, MTF-166, YF-DE1604-6, YF-DE1605-6, YF-DE1606-6, YF-ST1602-6, YF-ST1605-6, YF-ST1606-6, MSF-2666, YF-ST1607-6, YF-ST1609-6, YF-ST1608-6, MSF-1666, YF-ST1619-6, YF-ST1622-6, **YF-ST1631-6**



TEST REPORT N°: ASJY-EGZ-P22030077-1-R1

Model differences:

1. Models YF-ST1227, YF-ST1228, YF-ST1238, YF-ST1627-1, YF-ST1628-1, YF-ST1638-1, YF-ST1627, YF-ST1628, YF-ST1638, YF-ST1227-6, YF-ST1228-6, YF-ST1238-6, YF-ST1227-7, YF-ST1228-7, YF-ST1238-7, YF-ST1627-5, YF-ST1628-5, YF-ST1638-5, YF-ST1627-7, YF-ST1628-7, YF-ST1638-7, YF-ST1627-6, YF-ST1638-6 are identical with original model YF-ST1628-6 except appearance, size, power label and model name.
2. Models YF-DE601, FT-15, YF-DE602, YF-DE603, FT-23E, YF-DE902, YF-DE903, YF-DE904, YF-DE905, YF-DE906, YF-DE907, YF-DE908, YF-DE909 are identical with original model YF-DE901 except appearance, size, power label and model name.
3. Models YF-DE1601-1, YF-DE1602-1, YF-DE1603-1, YF-DE1604-1, YF-DE1605-1, YF-DE1606-1, YF-DE1201, FT-30E, YF-DE1202, MTF-121, FT-30, YF-DE1203, YF-DE1204, FT-30B, YF-DE1205, YF-DE1206, YF-ST1201, YF-ST1202, YF-ST1203, YF-ST1204, YF-ST1205, YF-ST1206, YF-ST1207, YF-ST1208, YF-ST1209, YF-ST1210, YF-ST1211, YF-ST1214, YF-ST1216, YF-ST1217, YF-ST1218, YF-ST1219, YF-ST1220, YF-ST1221, YF-ST1222, YF-ST1223, YF-ST1224, YF-ST1225, YF-ST1226, YF-ST1229, YF-ST1230, YF-ST1231, YF-ST1601-1, YF-ST1602-1, YF-ST1603-1, YF-ST1604-1, YF-ST1605-1, YF-ST1606-1, YF-ST1607-1, YF-ST1608-1, YF-ST1609-1, YF-ST1610-1, YF-ST1611-1, YF-ST1614-1, YF-ST1616-1, YF-ST1617-1, YF-ST1618-1, YF-ST1619-1, YF-ST1620-1, YF-ST1621-1, YF-ST1622-1, YF-ST1623-1, YF-ST1624-1, YF-ST1625-1, YF-ST1626-1, YF-ST1629-1, YF-ST1630-1, YF-ST1631-1, YF-ST1601, YF-DE1601, FT-40E, YF-DE1602, MTF-161, FT-40, YF-DE1603, YF-DE1604, FT-40B, YF-DE1605, YF-DE1606, YF-DE1201-6, YF-DE1202-6, YF-DE1203-6, MTF-126, YF-DE1204-6, YF-DE1205-6, YF-DE1206-6, YF-DE1201-7, YF-DE1202-7, MTF-12, YF-DE1203-7, YF-DE1204-7, YF-DE1205-7, YF-DE1206-7, FS-40C, YF-ST1602, YF-ST1603, FS-40A, YF-ST1604, FS-40B, YF-ST1605, FS-40, YF-ST1606, YF-ST1607, YF-ST1608, YF-ST1609, YF-ST1610, YF-ST1611, YF-ST1614, YF-ST1616, YF-ST1617, YF-ST1618, YF-ST1619, YF-ST1620, YF-ST1621, YF-ST1622, YF-ST1623, YF-ST1624, YF-ST1625, YF-ST1626, FS-40R, YF-ST1629, YF-ST1630, YF-ST1631, YF-ST1201-6, YF-ST1202-6, YF-ST1203-6, YF-ST1204-6, YF-ST1205-6, YF-ST1206-6, YF-ST1207-6, YF-ST1208-6, YF-ST1209-6, YF-ST1210-6, YF-ST1211-6, YF-ST1214-6, YF-ST1216-6, YF-ST1217-6, YF-ST1218-6, YF-ST1219-6, YF-ST1220-6, YF-ST1221-6, YF-ST1222-6, YF-ST1223-6, YF-ST1224-6, YF-ST1225-6, YF-ST1226-6, YF-ST1229-6, YF-ST1230-6, YF-ST1231-6, YF-ST1201-7, YF-ST1202-7, YF-ST1203-7, YF-ST1204-7, YF-ST1205-7, YF-ST1206-7, YF-ST1207-7, YF-ST1208-7, YF-ST1209-7, YF-ST1210-7, YF-ST1211-7, YF-ST1214-7, YF-ST1216-7, YF-ST1217-7, YF-ST1218-7, YF-ST1219-7, YF-ST1220-7, YF-ST1221-7, YF-ST1222-7, YF-ST1223-7, YF-ST1224-7, YF-ST1225-7, YF-ST1226-7, YF-ST1229-7, YF-ST1230-7, YF-ST1231-7, YF-DE1601-5, YF-DE1602-5, YF-DE1603-5, YF-DE1604-5, YF-DE1605-5, YF-DE1606-5, YF-ST1602-5, YF-ST1605-5, YF-ST1606-5, YF-ST1607-5, YF-ST1608-5, YF-ST1609-5, YF-ST1619-5, YF-ST1622-5, YF-ST1624-5, YF-ST1631-5, YF-DE1601-7, YF-DE1602-7, MTF-165, YF-DE1603-7, MTF-2666, YF-DE1604-7, YF-DE1605-7, YF-DE1606-7, YF-ST1602-7, YF-ST1605-7, YF-ST1606-7, MSF-1665, YF-ST1607-7, YF-ST1608-7, YF-ST1609-7, YF-ST1619-7, YF-ST1622-7, YF-ST1624-7, YF-ST1631-7, YF-DE1601-6, YF-DE1602-6, YF-DE1603-6, MTF-166, YF-DE1604-6, YF-DE1605-6, YF-DE1606-6, YF-ST1602-6, YF-ST1605-6, MSF-2666, YF-ST1607-6, YF-ST1609-6, YF-ST1608-6, MSF-1666, YF-ST1619-6, YF-ST1622-6, YF-ST1631-6 are identical with original model YF-ST1606-6 except appearance, size, power label and model name.

Based on engineering judgement, full tests were performed on model YF-DE901, YF-ST1628-6 and YF-ST1606-6. The worst case's test data was presented in this test report.

The production units are required to conform to the initial sample as received when the units are placed on the market.



TEST REPORT N°: ASJY-EGZ-P22030077-1-R1

Electrical Rating:

220V-240V~; 50 Hz / 60 Hz or 230V~ 50Hz; Class II; T;

YF-DE601, FT-15, YF-DE602, YF-DE603: 15W;

YF-DE901, FT-23E, YF-DE902, YF-DE903, YF-DE904, YF-DE905, YF-DE906, YF-DE907, YF-DE908, YF-DE909: 25W;

YF-ST1227, YF-ST1228, YF-ST1238, YF-ST1627-1, YF-ST1628-1, YF-ST1638-1, YF-DE1601-1, YF-DE1602-1, YF-DE1603-1, YF-DE1604-1, YF-DE1605-1, YF-DE1606-1, YF-DE1201, FT-30E, YF-DE1202, MTF-121, FT-30, YF-DE1203, YF-DE1204, FT-30B, YF-DE1205, YF-DE1206, YF-ST1201, YF-ST1202, YF-ST1203, YF-ST1204, YF-ST1205, YF-ST1206, YF-ST1207, YF-ST1208, YF-ST1209, YF-ST1210, YF-ST1211, YF-ST1214, YF-ST1216, YF-ST1217, YF-ST1218, YF-ST1219, YF-ST1220, YF-ST1221, YF-ST1222, YF-ST1223, YF-ST1224, YF-ST1225, YF-ST1226, YF-ST1229, YF-ST1230, YF-ST1231, YF-ST1601-1, YF-ST1602-1, YF-ST1603-1, YF-ST1604-1, YF-ST1605-1, YF-ST1606-1, YF-ST1607-1, YF-ST1608-1, YF-ST1609-1, YF-ST1610-1, YF-ST1611-1, YF-ST1614-1, YF-ST1616-1, YF-ST1617-1, YF-ST1618-1, YF-ST1619-1, YF-ST1620-1, YF-ST1621-1, YF-ST1622-1, YF-ST1623-1, YF-ST1624-1, YF-ST1625-1, YF-ST1626-1, YF-ST1629-1, YF-ST1630-1, YF-ST1631-1: 40W;

YF-ST1627, YF-ST1628, YF-ST1638, YF-ST1227-6, YF-ST1228-6, YF-ST1238-6, YF-ST1227-7, YF-ST1228-7, YF-ST1238-7, YF-ST1601, YF-DE1601, FT-40E, YF-DE1602, MTF-161, FT-40, YF-DE1603, YF-DE1604, FT-40B, YF-DE1605, YF-DE1606, YF-DE1201-6, YF-DE1202-6, YF-DE1203-6, MTF-126, YF-DE1204-6, YF-DE1205-6, YF-DE1206-6, YF-DE1201-7, YF-DE1202-7, MTF-12, YF-DE1203-7, YF-DE1204-7, YF-DE1205-7, YF-DE1206-7, FS-40C, YF-ST1602, YF-ST1603, FS-40A, YF-ST1604, FS-40B, YF-ST1605, FS-40, YF-ST1606, YF-ST1607, YF-ST1608, YF-ST1609, YF-ST1610, YF-ST1611, YF-ST1614, YF-ST1616, YF-ST1617, YF-ST1618, YF-ST1619, YF-ST1620, YF-ST1621, YF-ST1622, YF-ST1623, YF-ST1624, YF-ST1625, YF-ST1626, FS-40R, YF-ST1629, YF-ST1630, YF-ST1631, YF-ST1201-6, YF-ST1202-6, YF-ST1203-6, YF-ST1204-6, YF-ST1205-6, YF-ST1206-6, YF-ST1207-6, YF-ST1208-6, YF-ST1209-6, YF-ST1210-6, YF-ST1211-6, YF-ST1214-6, YF-ST1216-6, YF-ST1217-6, YF-ST1218-6, YF-ST1219-6, YF-ST1220-6, YF-ST1221-6, YF-ST1222-6, YF-ST1223-6, YF-ST1224-6, YF-ST1225-6, YF-ST1226-6, YF-ST1229-6, YF-ST1230-6, YF-ST1231-6, YF-ST1201-7, YF-ST1202-7, YF-ST1203-7, YF-ST1204-7, YF-ST1205-7, YF-ST1206-7, YF-ST1207-7, YF-ST1208-7, YF-ST1209-7, YF-ST1210-7, YF-ST1211-7, YF-ST1214-7, YF-ST1216-7, YF-ST1217-7, YF-ST1218-7, YF-ST1219-7, YF-ST1220-7, YF-ST1221-7, YF-ST1222-7, YF-ST1223-7, YF-ST1224-7, YF-ST1225-7, YF-ST1226-7, YF-ST1229-7, YF-ST1230-7, YF-ST1231-7: 45W;

YF-ST1627-5, YF-ST1628-5, YF-ST1638-5, YF-DE1601-5, YF-DE1602-5, YF-DE1603-5, YF-DE1604-5, YF-DE1605-5, YF-DE1606-5, YF-ST1602-5, YF-ST1605-5, YF-ST1606-5, YF-ST1607-5, YF-ST1608-5, YF-ST1609-5, YF-ST1619-5, YF-ST1622-5, YF-ST1624-5, YF-ST1631-5: 55W;

YF-DE1601-7, YF-DE1602-7, MTF-165, YF-DE1603-7, MTF-2666, YF-DE1604-7, YF-DE1605-7, YF-DE1606-7, YF-ST1602-7, YF-ST1605-7, YF-ST1606-7, MSF-1665, YF-ST1607-7, YF-ST1608-7, YF-ST1609-7, YF-ST1619-7, YF-ST1622-7, YF-ST1624-7, YF-ST1631-7: 60W;

YF-ST1628-6, YF-ST1627-6, YF-ST1638-6, YF-DE1601-6, YF-DE1602-6, YF-DE1603-6, MTF-166, YF-DE1604-6, YF-DE1605-6, YF-DE1606-6, YF-ST1602-6, YF-ST1605-6, YF-ST1606-6, MSF-2666, YF-ST1607-6, YF-ST1609-6, YF-ST1608-6, MSF-1666, YF-ST1619-6, YF-ST1622-6, YF-ST1631-6: 75W;



TEST REPORT N°: ASJY-EGZ-P22030077-1-R1

3 LABORATORY MEASUREMENTS

3.1 Support Equipment: N/A

3.2 Measurement Uncertainty

Test Item	Measurement Uncertainty
Conduction emission test(9K-150KHz)	2.43 dB
Conduction emission test(150KHz-30MHz)	2.52 dB
Disturbance Power test	2.55 dB
CDNE(30-300 MHz)	3.27 dB

3.3 TEST SITES

Bureau Veritas Consumer Products Services (Guangzhou) Co., Ltd, Science City Branch
Rm.101,G5 Building, South China Advanced Materials Innovation Park, NO.31 Kefeng Rd, Guangzhou
Science City, Guangzhou.



**BUREAU
VERITAS**

TEST REPORT N°: ASJY-EGZ-P22030077-1-R1

4 OPERATING CONDITIONS

The apparatus was placed in a shielded room, and was powered with an alternative current source through filters mounted on the shielded room wall. The apparatus was worked continuously.

Climatic conditions:	Temperature	:	22 °C
	Relative humidity	:	55 %
	Atmospheric pressure	:	101 kPa

5 PERFORMANCE CRITERIA

- Criterion A : The apparatus operate as intended during the test. No degradation of performance or loss of function is allowed below the performance level.
- Criterion B : The apparatus operate as intended after the test. No change of operating state and the stored data are allowed. During the test, degradation of performance is allowed.
- Criterion C : Temporary loss of function is allowed, provided the function is self-recoverable or can be restored by the operation of the controls, or by any operation specified in the instructions for use.



**BUREAU
VERITAS**

TEST REPORT N°: ASJY-EGZ-P22030077-1-R1

6 TEST RESULTS

6.1 EMISSION STANDARD EN IEC 55014-1:2021

Article	TEST	TEST SPECIFICATION	RESULTS			
			P	F	NA	Rem
4.3	<u>Disturbance Voltage Limit</u>	Operating conditions : according to the Annex A				
4.3.3	Frequency range: 0.15 to 30 MHz	Port(s) : • AC mains port • Diagram No. <1>	[X]	[]	[]	[]
4.3.4	<u>Disturbance Power Limit</u>	Port(s) : • AC mains port • DC port Diagram No. <2>	[X] []	[] []	[] []	[1] [1]
4.3.4	<u>Radiated disturbance limits</u>	Measuring Distance: 3 m Antenna : - horizontal position - vertical position Diagram(s) No. < >	[] []	[] []	[X] [X]	[2] [2]
4.4.2	<u>Discontinuous Disturbance Limit</u>	Operating conditions : according to the Annex A				
	Frequency range: 0.15 to 30 MHz	Port(s) : • AC mains port • Table(s) No. < >	[]	[]	[X]	[]

P : pass – F : Fail – NA : not applicable – Rem : remark



**BUREAU
VERITAS**

TEST REPORT N°: ASJY-EGZ-P22030077-1-R1

6.2 IMMUNITY STANDARD EN IEC 55014-2:2021

Apparatus category: II

Article	TEST	TEST SPECIFICATION	RESULTS			
			P	F	NA	Rem
5.1	<u>Electrostatic discharges</u> Table 1 Enclosure Performance Criterion B	Contact discharges Level : ± 4 kV Application points : • horizontal coupling plane	[X]	[]	[]	[3]
		• vertical coupling plane	[X]	[]	[]	[3]
		• conductive part	[]	[]	[X]	[3]
		Air discharges Level : ± 8 kV Application points : • switch	[X]	[]	[]	[3]
		• gap	[X]	[]	[]	[3]
5.2	<u>Fast transients/bursts</u> Table 4 Alternative current power input and output port(s) Performance Criterion B	Level : ± 1 kV Repetition rate : 5 kHz Testing time : 2 min Port(s) : • AC mains	[X]	[]	[]	[3]
5.3	<u>Injected current 0.15 to 230 MHz</u> Table 7 Alternative current power input and output port(s) Performance Criterion A	Voltage level : 3V (unmodulated signal) Modulation frequency : 1 kHz Modulation depth : 80 % Frequency Step : 1% Dwell Time: 2 s Application with CDN-M2 Port(s) : • AC mains	[X]	[]	[]	[3]

P : pass - F : Fail - NA : not applicable - Rem : remark



**BUREAU
VERITAS**

TEST REPORT N°: ASJY-EGZ-P22030077-1-R1

Article	TEST	TEST SPECIFICATION	RESULTS			
			P	F	NA	Rem
5.5	<p><u>Radio-frequency electromagnetic fields 80 to 1000 MHz</u></p> <p>Table 11 Enclosure</p> <p>Performance criteria A</p>	<p>Test field strength : 3 V/m (unmodulated signal)</p> <p>Modulation frequency : 1 kHz</p> <p>Modulation depth : 80 %</p> <p>Frequency Step : 1% Dwell Time : 2 s</p> <p><input type="checkbox"/> Logperiodic antenna <input type="checkbox"/> GTEM:</p> <p>- horizontal position</p> <p>- vertical position</p>	[]	[]	[X]	[]
			[]	[]	[X]	[]
5.6	<p><u>Surges</u></p> <p>Table 12</p> <p>Alternative current power input and output port(s)</p> <p>Performance Criterion B</p>	<p>Tr/Th(μs) : 1.2/50 (8/20)</p> <p>Number of surges : 5 positive and 5 negative</p> <p>Phase angles : 90° and 270°</p> <p>Level : ± 1 kV</p> <p>Port(s) :</p> <ul style="list-style-type: none"> power input, between lines and neutral 	[X]	[]	[]	[3]
		<p>Level : ± 2 kV</p> <p>Port(s) :</p> <ul style="list-style-type: none"> power input, between lines and earth power input, between neutral and earth 	[]	[]	[X]	[]
			[]	[]	[X]	[]



**BUREAU
VERITAS**

TEST REPORT N°: ASJY-EGZ-P22030077-1-R1

Article	TEST	TEST SPECIFICATION	RESULTS			
			P	F	NA	Rem
5.7	<u>Voltage dips and voltage interruptions</u> Table 13 Alternative current power input port(s) Performance Criterion C	<u>Voltage interruptions</u> Test level : 0 % Ut Duration : 10 ms Phase angles : 0° and 180° Port(s) : • AC mains	[X]	[]	[]	[3]
		<u>Voltage dips</u> Test level : 40 % Ut Duration : 200 ms Phase angles : 0° Port(s) : • AC mains	[X]	[]	[]	[3]
		<u>Voltage dips</u> Test level : 70 % Ut Duration : 500 ms Phase angles : 0° Port(s) : • AC mains	[X]	[]	[]	[3]

P : pass - F : Fail - NA : not applicable - Rem : remark

6.3 EMISSION STANDARD EN IEC 61000-3-2:2019+A1:2021

TEST	TEST SPECIFICATION	RESULTS			
		P	F	NA	Rem
<u>Limits for harmonic currents emission</u>	Frequency range: 0 to 2 kHz Class of the apparatus : A Table(s) No. <1>	[X]	[]	[]	[]

P : pass - F : Fail - NA : not applicable - Rem : remark

6.4 EMISSION STANDARD EN 61000-3-3:2013+A1:2019+A2:2021

TEST	TEST SPECIFICATION	RESULTS			
		P	F	NA	Rem
<u>Limitation of voltage fluctuations and flicker in low-voltage supply systems</u>	Frequency range: 0 to 2 kHz Table(s) No. <2>	[X]	[]	[]	[]

P : pass - F : Fail - NA : not applicable - Rem : remark



**BUREAU
VERITAS**

TEST REPORT N°: ASJY-EGZ-P22030077-1-R1

Remark(s) :

1. The manufacturer chooses the disturbance power test method according to clause 4.3.4 in this standard.
2. The EUT does not contain any internal clock frequency or clock generator operating at frequency higher than 30MHz and the margin for the disturbance power test results between 200MHz and 300MHz fulfilled the margin's requirement in Table 8, the EUT is deemed to comply with this requirement without further testing.
3. During and after the test, there are no loss of function and no change of motor speed, power consumption and operating state.

7 CONCLUSION

The apparatus Electric Fan, models listed in page 3 are in compliance with the requirements of the standards EN IEC 55014-1:2021, EN IEC 55014-2:2021, EN IEC 61000-3-2:2019+A1:2021 and EN 61000-3-3:2013+A1:2019+A2:2021 .



**BUREAU
VERITAS**

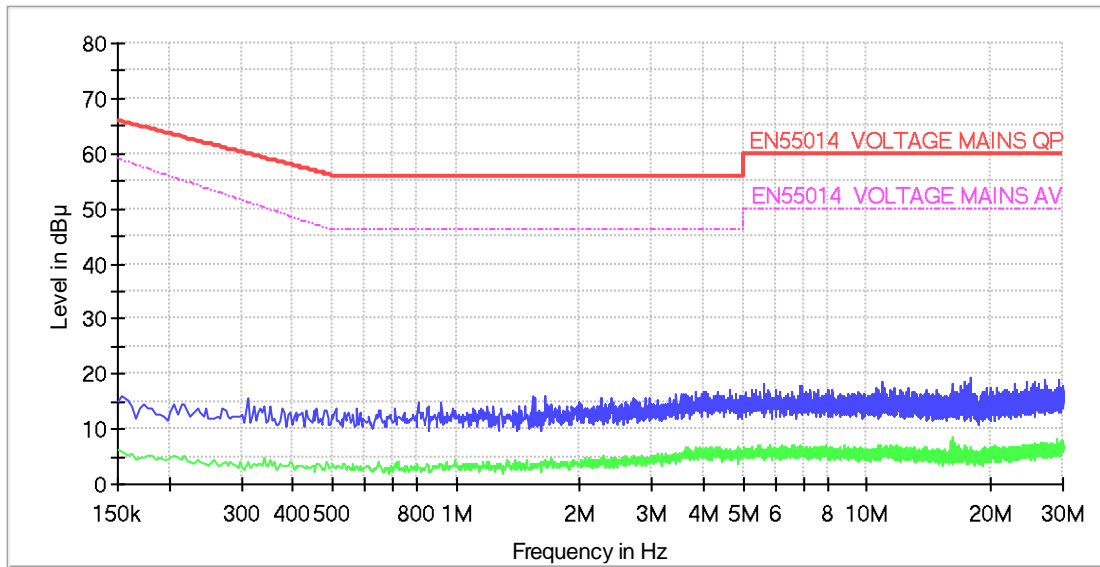
TEST REPORT N°: ASJY-EGZ-P22030077-1-R1

8 APPENDIX A – TEST DATA

Diagram No. 1: Conducted Emission

YF-DE901

L Line



All emission levels are more than 10 dB below the limit.

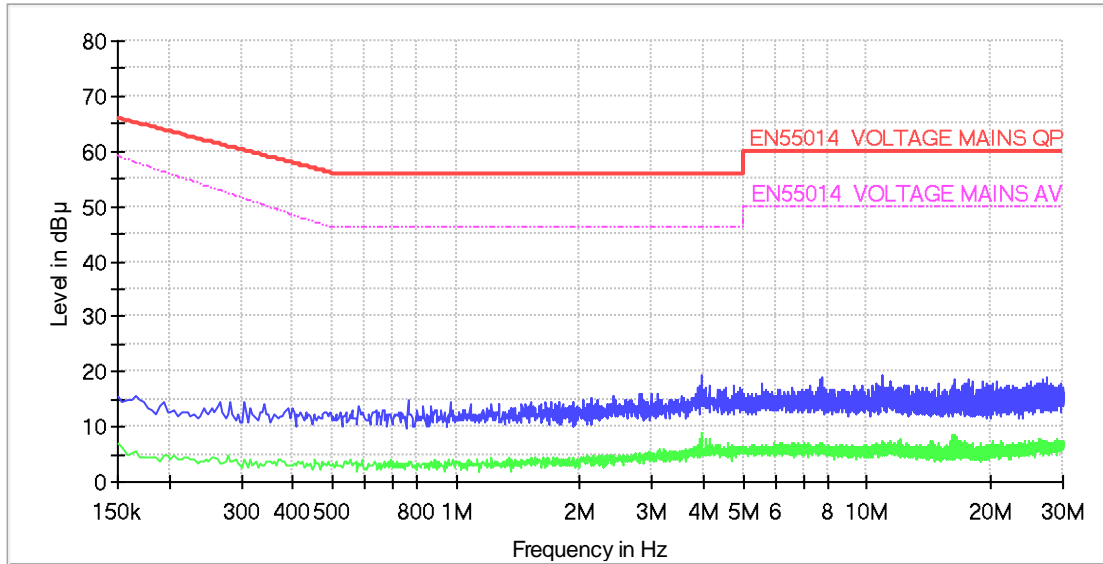


**BUREAU
VERITAS**

TEST REPORT N°: ASJY-EGZ-P22030077-1-R1

Continued

N line



All emission levels are more than 10 dB below the limit.

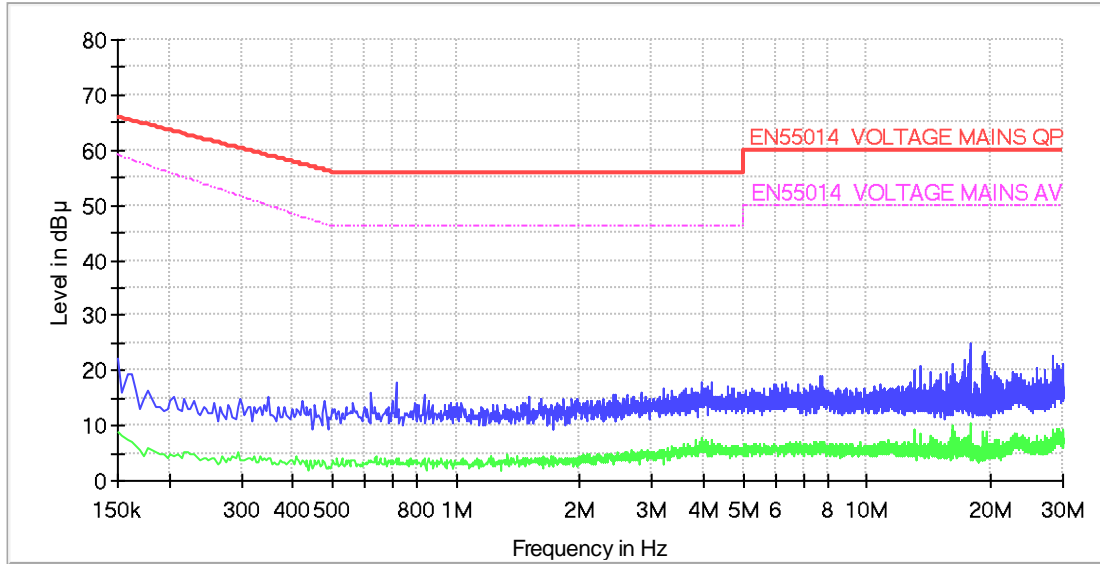


**BUREAU
VERITAS**

TEST REPORT N°: ASJY-EGZ-P22030077-1-R1

Continued
YF-ST1606-6

L Line



All emission levels are more than 10 dB below the limit.

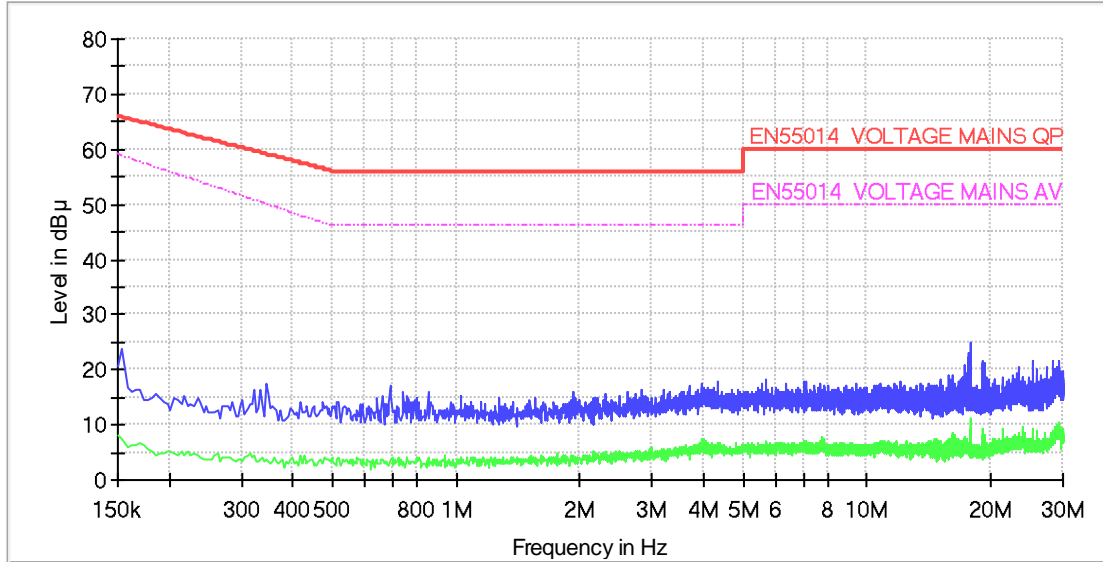


**BUREAU
VERITAS**

TEST REPORT N°: ASJY-EGZ-P22030077-1-R1

Continued

N line



All emission levels are more than 10 dB below the limit.

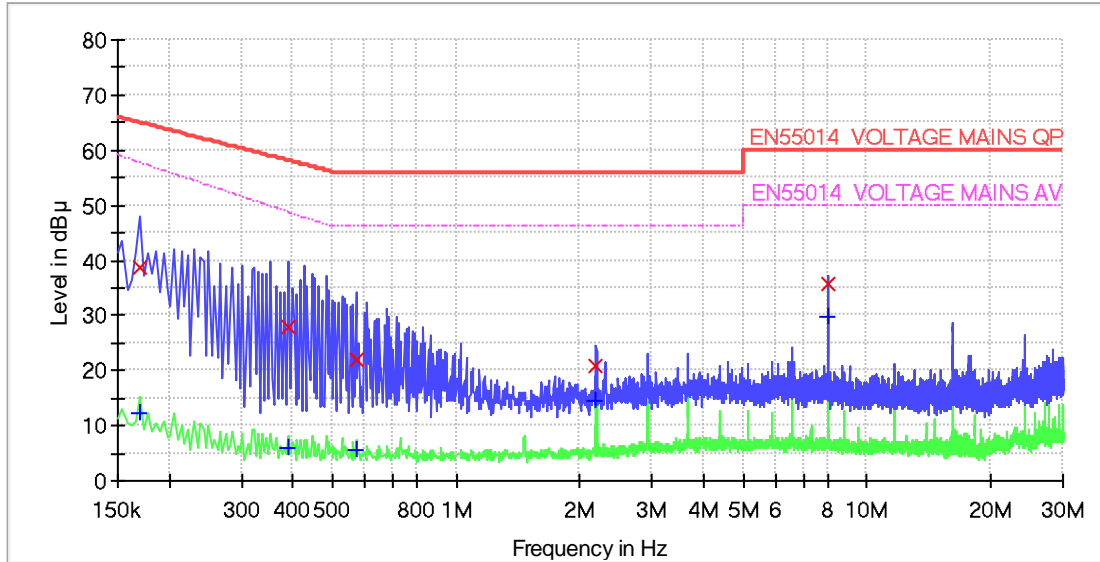


**BUREAU
VERITAS**

TEST REPORT N°: ASJY-EGZ-P22030077-1-R1

Continued
YF-ST1628-6

L Line



Frequency (MHz)	QuasiPeak (dB µ V)	CAverage (dB µ V)	Meas. Time (ms)	Bandwidth (kHz)	Line	PE	Corr. (dB)	Margin - QPK (dB)	Limit - QPK (dB µ V)	Margin - CAV (dB)	Limit - CAV (dB µ V)
0.170000	38.8	12.5	1000.0	9.000	L1	GND	9.7	26.1	65.0	45.2	57.6
0.390000	28.0	6.1	1000.0	9.000	L1	GND	9.7	30.1	58.1	42.6	48.7
0.570000	21.8	5.6	1000.0	9.000	L1	GND	9.7	34.2	56.0	40.4	46.0
2.194000	20.7	14.5	1000.0	9.000	L1	GND	9.7	35.3	56.0	31.5	46.0
8.042000	35.8	29.7	1000.0	9.000	L1	GND	9.9	24.2	60.0	20.3	50.0

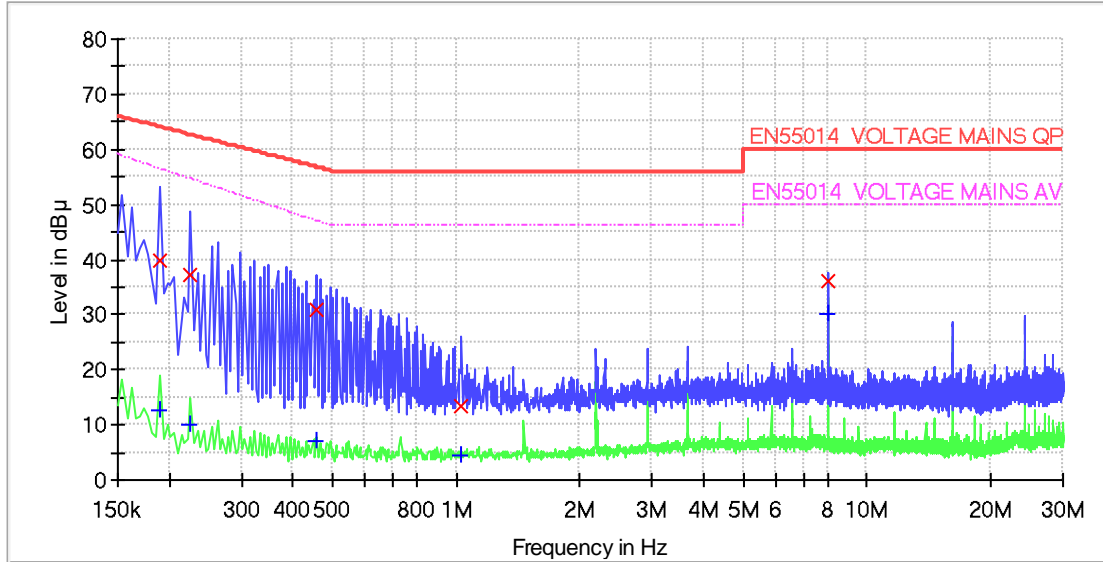


**BUREAU
VERITAS**

TEST REPORT N°: ASJY-EGZ-P22030077-1-R1

Continued

N line



Frequency (MHz)	QuasiPeak (dB µV)	CAverage (dB µV)	Meas. Time (ms)	Bandwidth (kHz)	Line	PE	Corr. (dB)	Margin - QPK (dB)	Limit - QPK (dB µV)	Margin - CAV (dB)	Limit - CAV (dB µV)
0.190000	39.9	12.5	1000.0	9.000	N	GND	9.7	24.2	64.0	44.0	56.4
0.226000	37.3	10.0	1000.0	9.000	N	GND	9.7	25.3	62.6	44.6	54.6
0.458000	30.8	7.0	1000.0	9.000	N	GND	9.7	26.0	56.7	40.0	46.9
1.030000	13.6	4.4	1000.0	9.000	N	GND	9.7	42.4	56.0	41.6	46.0
8.042000	36.1	30.2	1000.0	9.000	N	GND	9.9	23.9	60.0	19.8	50.0

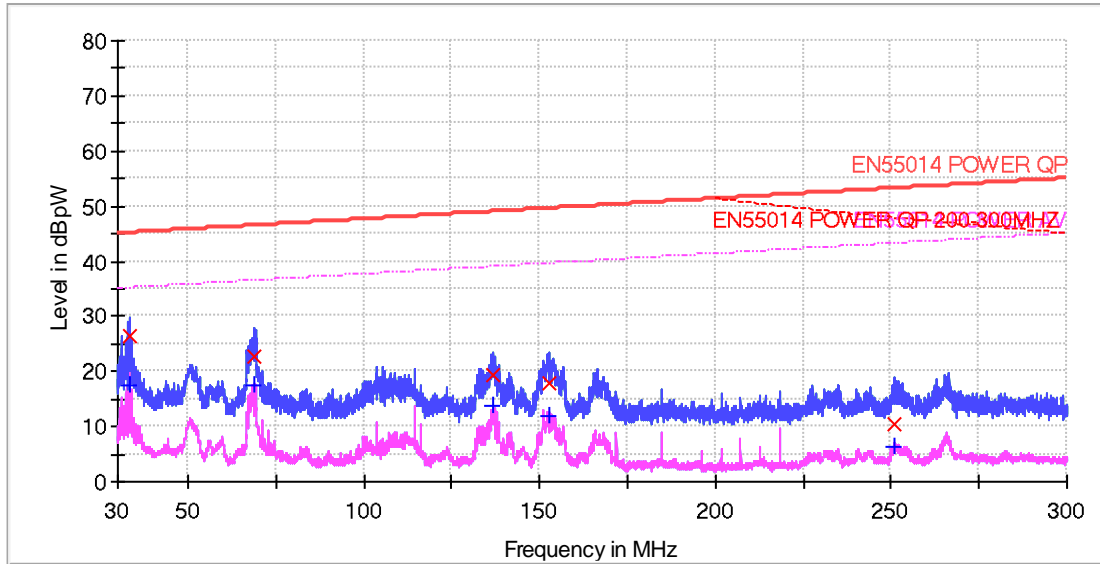


**BUREAU
VERITAS**

TEST REPORT N°: ASJY-EGZ-P22030077-1-R1

**Diagram No. 2: Disturbance Power
YF-DE901**

AC Port



Frequency (MHz)	QuasiPeak (dBpW)	CAverage (dBpW)	Meas. Time (ms)	Bandwidth (kHz)	Position (cm)	Corr. (dB)	Margin - QPK (dB)	Limit - QPK (dBpW)	Margin - CAV (dB)	Limit - CAV (dBpW)
33.400000	26.5	17.6	1000.0	120.000	0.0	8.6	18.6	45.1	17.5	35.1
68.600000	22.9	17.5	1000.0	120.000	0.0	6.5	23.6	46.4	18.9	36.4
136.600000	19.3	13.6	1000.0	120.000	0.0	5.2	29.7	48.9	25.4	38.9
152.640000	17.9	11.7	1000.0	120.000	0.0	5.2	31.6	49.5	27.8	39.5
251.160000	10.4	6.4	1000.0	120.000	0.0	5.6	42.8	53.2	36.8	43.2

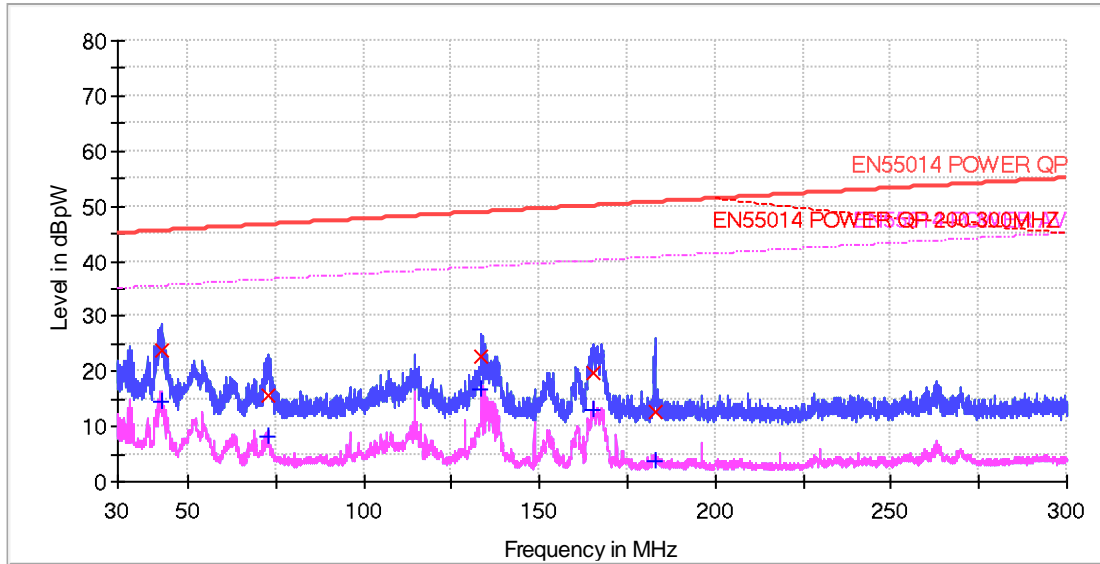


**BUREAU
VERITAS**

TEST REPORT N°: ASJY-EGZ-P22030077-1-R1

Continued
YF-ST1606-6

AC Port



Frequency (MHz)	QuasiPeak (dBpW)	CAverage (dBpW)	Meas. Time (ms)	Bandwidth (kHz)	Position (cm)	Corr. (dB)	Margin - QPK (dB)	Limit - QPK (dBpW)	Margin - CAV (dB)	Limit - CAV (dBpW)
42.400000	23.7	14.5	1000.0	120.000	0.0	7.5	21.8	45.5	21.0	35.5
72.840000	15.8	8.4	1000.0	120.000	0.0	6.5	30.8	46.6	28.2	36.6
133.560000	22.7	16.9	1000.0	120.000	0.0	5.2	26.2	48.8	21.9	38.8
165.040000	19.5	13.2	1000.0	120.000	0.0	4.7	30.5	50.0	26.8	40.0
183.040000	12.5	3.9	1000.0	120.000	0.0	4.5	38.2	50.7	36.8	40.7

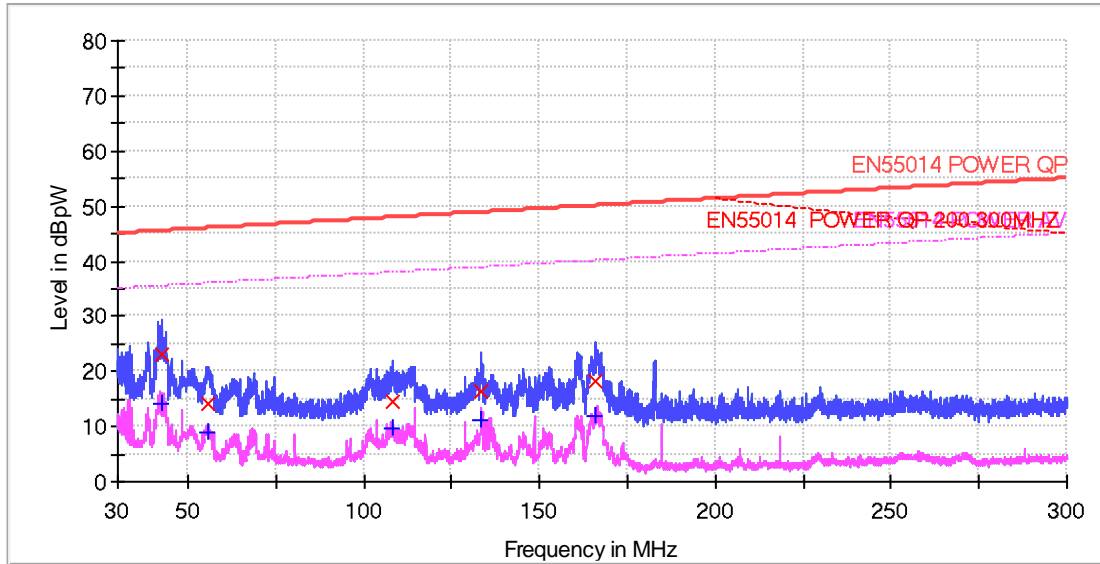


**BUREAU
VERITAS**

TEST REPORT N°: ASJY-EGZ-P22030077-1-R1

Continued
YF-ST1628-6

AC Port



Frequency (MHz)	QuasiPeak (dBpW)	CAverage (dBpW)	Meas. Time (ms)	Bandwidth (kHz)	Position (cm)	Corr. (dB)	Margin - QPK (dB)	Limit - QPK (dBpW)	Margin - CAV (dB)	Limit - CAV (dBpW)
42.480000	22.9	14.2	1000.0	120.000	0.0	7.5	22.5	45.5	21.3	35.5
55.680000	14.0	9.0	1000.0	120.000	0.0	6.1	31.9	46.0	26.9	36.0
108.440000	14.6	9.5	1000.0	120.000	0.0	6.2	33.3	47.9	28.4	37.9
133.360000	16.2	11.1	1000.0	120.000	0.0	5.2	32.6	48.8	27.7	38.8
165.960000	18.1	12.0	1000.0	120.000	0.0	4.6	32.0	50.0	28.0	40.0



**BUREAU
VERITAS**

TEST REPORT N°: ASJY-EGZ-P22030077-1-R1

Table(s) No. < 1>

YF-DE901

Urms = 230.3V Freq = 49.987 Range: 25 A
Irms = 0.122A Ipk = 0.208A cf = 1.700
P = 18.41W S = 28.11VA pf = 0.655
THDi = 12.6 % THDu = 0.10 % Class A
Test - Time : 3min (100 %)
Test completed, Result: PASSED

Order	Freq. [Hz]	Iavg [A]	Iavg%L [%]	Imax [A]	Imax%L [%]	Limit [A]	Status
1	50	0.1188		0.1221			
2	100	0.0000	0.0000	0.0000	0.0000	1.0800	
3	150	0.0132	0.5723	0.0137	0.5971	2.3000	
4	200	0.0000	0.0000	0.0000	0.0000	0.4300	
5	250	0.0000	0.0000	0.0015	0.1338	1.1400	
6	300	0.0000	0.0000	0.0000	0.0000	0.3000	
7	350	0.0000	0.0000	0.0000	0.0000	0.7700	
8	400	0.0000	0.0000	0.0000	0.0000	0.2300	
9	450	0.0000	0.0000	0.0000	0.0000	0.4000	
10	500	0.0000	0.0000	0.0000	0.0000	0.1840	
11	550	0.0000	0.0000	0.0000	0.0000	0.3300	
12	600	0.0000	0.0000	0.0000	0.0000	0.1533	
13	650	0.0000	0.0000	0.0000	0.0000	0.2100	
14	700	0.0000	0.0000	0.0000	0.0000	0.1314	
15	750	0.0000	0.0000	0.0000	0.0000	0.1500	
16	800	0.0000	0.0000	0.0000	0.0000	0.1150	
17	850	0.0000	0.0000	0.0000	0.0000	0.1324	
18	900	0.0000	0.0000	0.0000	0.0000	0.1022	
19	950	0.0000	0.0000	0.0000	0.0000	0.1184	
20	1000	0.0000	0.0000	0.0000	0.0000	0.0920	
21	1050	0.0000	0.0000	0.0000	0.0000	0.1071	
22	1100	0.0000	0.0000	0.0000	0.0000	0.0836	
23	1150	0.0000	0.0000	0.0000	0.0000	0.0978	
24	1200	0.0000	0.0000	0.0000	0.0000	0.0767	
25	1250	0.0000	0.0000	0.0000	0.0000	0.0900	
26	1300	0.0000	0.0000	0.0000	0.0000	0.0708	
27	1350	0.0000	0.0000	0.0000	0.0000	0.0833	
28	1400	0.0000	0.0000	0.0000	0.0000	0.0657	
29	1450	0.0000	0.0000	0.0000	0.0000	0.0776	
30	1500	0.0000	0.0000	0.0000	0.0000	0.0613	
31	1550	0.0000	0.0000	0.0000	0.0000	0.0726	
32	1600	0.0000	0.0000	0.0000	0.0000	0.0575	
33	1650	0.0000	0.0000	0.0000	0.0000	0.0682	
34	1700	0.0000	0.0000	0.0000	0.0000	0.0541	
35	1750	0.0000	0.0000	0.0000	0.0000	0.0643	
36	1800	0.0000	0.0000	0.0000	0.0000	0.0511	
37	1850	0.0000	0.0000	0.0000	0.0000	0.0608	
38	1900	0.0000	0.0000	0.0000	0.0000	0.0484	
39	1950	0.0000	0.0000	0.0000	0.0000	0.0577	
40	2000	0.0000	0.0000	0.0000	0.0000	0.0460	



**BUREAU
VERITAS**

TEST REPORT N°: ASJY-EGZ-P22030077-1-R1

Continued

YF-ST1606-6

Urms = 230.3V Freq = 49.987 Range: 25 A
Irms = 0.293A Ipk = 0.464A cf = 1.583
P = 66.26W S = 67.47VA pf = 0.982
THDi = 4.50 % THDu = 0.10 % Class A
Test - Time : 3min (100 %)
Test completed, Result: PASSED

Order	Freq. [Hz]	Iavg [A]	Iavg%L [%]	Imax [A]	Imax%L [%]	Limit [A]	Status
1	50	0.2901		0.2945			
2	100	0.0000	0.0000	0.0000	0.0000	1.0800	
3	150	0.0111	0.4806	0.0122	0.5307	2.3000	
4	200	0.0000	0.0000	0.0000	0.0000	0.4300	
5	250	0.0000	0.0000	0.0015	0.1338	1.1400	
6	300	0.0000	0.0000	0.0000	0.0000	0.3000	
7	350	0.0000	0.0000	0.0000	0.0000	0.7700	
8	400	0.0000	0.0000	0.0000	0.0000	0.2300	
9	450	0.0000	0.0000	0.0000	0.0000	0.4000	
10	500	0.0000	0.0000	0.0000	0.0000	0.1840	
11	550	0.0000	0.0000	0.0000	0.0000	0.3300	
12	600	0.0000	0.0000	0.0000	0.0000	0.1533	
13	650	0.0000	0.0000	0.0000	0.0000	0.2100	
14	700	0.0000	0.0000	0.0000	0.0000	0.1314	
15	750	0.0000	0.0000	0.0000	0.0000	0.1500	
16	800	0.0000	0.0000	0.0000	0.0000	0.1150	
17	850	0.0000	0.0000	0.0000	0.0000	0.1324	
18	900	0.0000	0.0000	0.0000	0.0000	0.1022	
19	950	0.0000	0.0000	0.0000	0.0000	0.1184	
20	1000	0.0000	0.0000	0.0000	0.0000	0.0920	
21	1050	0.0000	0.0000	0.0000	0.0000	0.1071	
22	1100	0.0000	0.0000	0.0000	0.0000	0.0836	
23	1150	0.0000	0.0000	0.0000	0.0000	0.0978	
24	1200	0.0000	0.0000	0.0000	0.0000	0.0767	
25	1250	0.0000	0.0000	0.0000	0.0000	0.0900	
26	1300	0.0000	0.0000	0.0000	0.0000	0.0708	
27	1350	0.0000	0.0000	0.0000	0.0000	0.0833	
28	1400	0.0000	0.0000	0.0000	0.0000	0.0657	
29	1450	0.0000	0.0000	0.0000	0.0000	0.0776	
30	1500	0.0000	0.0000	0.0000	0.0000	0.0613	
31	1550	0.0000	0.0000	0.0000	0.0000	0.0726	
32	1600	0.0000	0.0000	0.0000	0.0000	0.0575	
33	1650	0.0000	0.0000	0.0000	0.0000	0.0682	
34	1700	0.0000	0.0000	0.0000	0.0000	0.0541	
35	1750	0.0000	0.0000	0.0000	0.0000	0.0643	
36	1800	0.0000	0.0000	0.0000	0.0000	0.0511	
37	1850	0.0000	0.0000	0.0000	0.0000	0.0608	
38	1900	0.0000	0.0000	0.0000	0.0000	0.0484	
39	1950	0.0000	0.0000	0.0000	0.0000	0.0577	
40	2000	0.0000	0.0000	0.0000	0.0000	0.0460	



**BUREAU
VERITAS**

TEST REPORT N°: ASJY-EGZ-P22030077-1-R1

Continued

YF-ST1628-6

Urms = 230.3V Freq = 49.987 Range: 25 A
Irms = 0.305A Ipk = 0.476A cf = 1.560
P = 69.95W S = 70.28VA pf = 0.995
THDi = 4.71 % THDu = 0.10 % Class A
Test - Time : 3min (100 %)
Test completed, Result: PASSED

Order	Freq. [Hz]	Iavg [A]	Iavg%L [%]	Imax [A]	Imax%L [%]	Limit [A]	Status
1	50	0.3059		0.3098			
2	100	0.0000	0.0000	0.0000	0.0000	1.0800	
3	150	0.0122	0.5315	0.0137	0.5971	2.3000	
4	200	0.0000	0.0000	0.0000	0.0000	0.4300	
5	250	0.0000	0.0000	0.0031	0.2677	1.1400	
6	300	0.0000	0.0000	0.0000	0.0000	0.3000	
7	350	0.0000	0.0000	0.0015	0.1982	0.7700	
8	400	0.0000	0.0000	0.0000	0.0000	0.2300	
9	450	0.0000	0.0000	0.0015	0.3815	0.4000	
10	500	0.0000	0.0000	0.0000	0.0000	0.1840	
11	550	0.0000	0.0000	0.0015	0.4624	0.3300	
12	600	0.0000	0.0000	0.0015	0.9951	0.1533	
13	650	0.0000	0.0000	0.0015	0.7266	0.2100	
14	700	0.0000	0.0000	0.0000	0.0000	0.1314	
15	750	0.0000	0.0000	0.0015	1.0173	0.1500	
16	800	0.0000	0.0000	0.0000	0.0000	0.1150	
17	850	0.0000	0.0000	0.0015	1.1529	0.1324	
18	900	0.0000	0.0000	0.0015	1.4927	0.1022	
19	950	0.0000	0.0000	0.0015	1.2885	0.1184	
20	1000	0.0000	0.0000	0.0000	0.0000	0.0920	
21	1050	0.0000	0.0000	0.0015	1.4242	0.1071	
22	1100	0.0000	0.0000	0.0015	1.8244	0.0836	
23	1150	0.0000	0.0000	0.0015	1.5598	0.0978	
24	1200	0.0000	0.0000	0.0015	1.9903	0.0767	
25	1250	0.0000	0.0000	0.0015	1.6954	0.0900	
26	1300	0.0000	0.0000	0.0015	2.1561	0.0708	
27	1350	0.0000	0.0000	0.0015	1.8311	0.0833	
28	1400	0.0000	0.0000	0.0015	2.3220	0.0657	
29	1450	0.0000	0.0000	0.0015	1.9667	0.0776	
30	1500	0.0000	0.0000	0.0015	2.4878	0.0613	
31	1550	0.0000	0.0000	0.0015	2.1023	0.0726	
32	1600	0.0000	0.0000	0.0015	2.6537	0.0575	
33	1650	0.0000	0.0000	0.0015	2.2380	0.0682	
34	1700	0.0000	0.0000	0.0015	2.8196	0.0541	
35	1750	0.0000	0.0000	0.0015	2.3736	0.0643	
36	1800	0.0000	0.0000	0.0015	2.9854	0.0511	
37	1850	0.0000	0.0000	0.0015	2.5092	0.0608	
38	1900	0.0000	0.0000	0.0015	3.1513	0.0484	
39	1950	0.0000	0.0000	0.0015	2.6449	0.0577	
40	2000	0.0000	0.0000	0.0015	3.3171	0.0460	



**BUREAU
VERITAS**

TEST REPORT N°: ASJY-EGZ-P22030077-1-R1

Table(s) No. < 2>

YF-DE901

Urms = 230.3V Freq = 49.987 Range: 25 A
Irms = 0.122A Ipk = 0.208A cf = 1.700
P = 17.79W S = 28.11VA pf = 0.633

Test - Time : 1 x 10min = 10min (100 %)

LIN (Line Impedance Network) : L: 0.24ohm +j0.15ohm N: 0.16ohm +j0.10ohm

Limits : Plt : 0.65 Pst : 1.00
dmax : 6.00 % dc : 3.30 %
dtLim: 3.00 % dt>Lim: 500ms

Test completed, Result: PASSED

	Pst	dmax	dc	dt>Lim
		[%]	[%]	[ms]
1	0.072	0.000	0.020	0.000

Continued

YF-ST1606-6

Urms = 230.1V Freq = 50.000 Range: 25 A
Irms = 0.281A Ipk = 0.452A cf = 1.609
P = 65.04W S = 64.61VA pf = 1.007

Test - Time : 1 x 10min = 10min (100 %)

LIN (Line Impedance Network) : L: 0.24ohm +j0.15ohm N: 0.16ohm +j0.10ohm

Limits : Plt : 0.65 Pst : 1.00
dmax : 7.00 % dc : 3.30 %
dtLim: 3.00 % dt>Lim: 500ms

Test completed, Result: PASSED

	Pst	dmax	dc	dt>Lim
		[%]	[%]	[ms]
1	0.072	0.000	0.010	0.000



**BUREAU
VERITAS**

TEST REPORT N°: ASJY-EGZ-P22030077-1-R1

Continued

YF-ST1628-6

Urms = 230.1V Freq = 49.987 Range: 25 A
Irms = 0.305A Ipk = 0.464A cf = 1.520
P = 68.72W S = 70.22VA pf = 0.979

Test - Time : 1 x 10min = 10min (100 %)

LIN (Line Impedance Network) : L: 0.24ohm +j0.15ohm N: 0.16ohm +j0.10ohm

Limits : Plt : 0.65 Pst : 1.00
dmax : 6.00 % dc : 3.30 %
dtLim: 3.00 % dt>Lim: 500ms

Test completed, Result: PASSED

	Pst	dmax	dc	dt>Lim
		[%]	[%]	[ms]
1	0.072	0.000	0.010	0.000



**BUREAU
VERITAS**

TEST REPORT N°: ASJY-EGZ-P22030077-1-R1

9 APPENDIX B – PHOTOS OF EUT

Model: YF-DE901





**BUREAU
VERITAS**

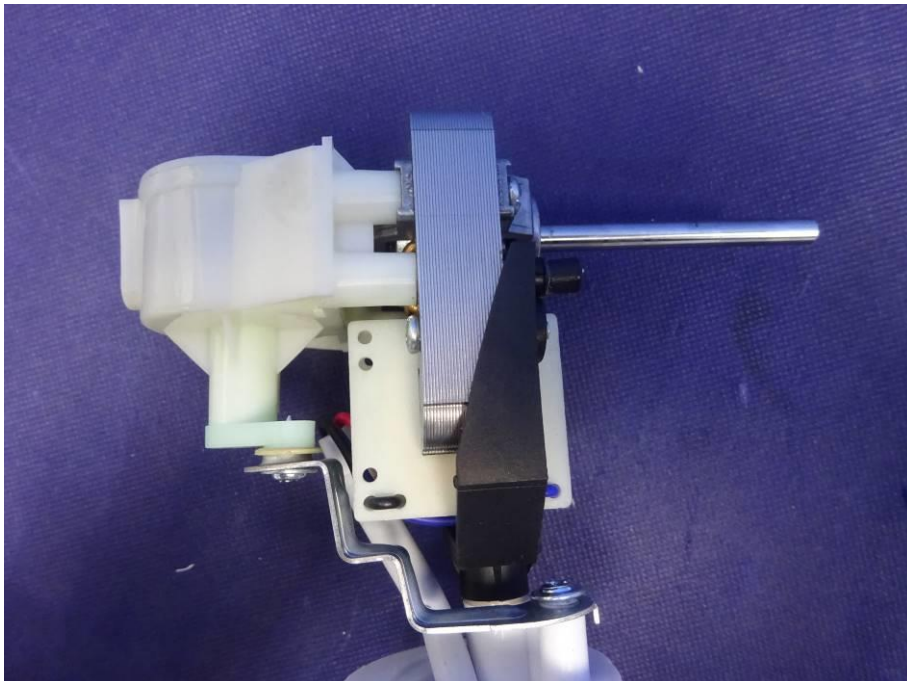
TEST REPORT N°: ASJY-EGZ-P22030077-1-R1





**BUREAU
VERITAS**

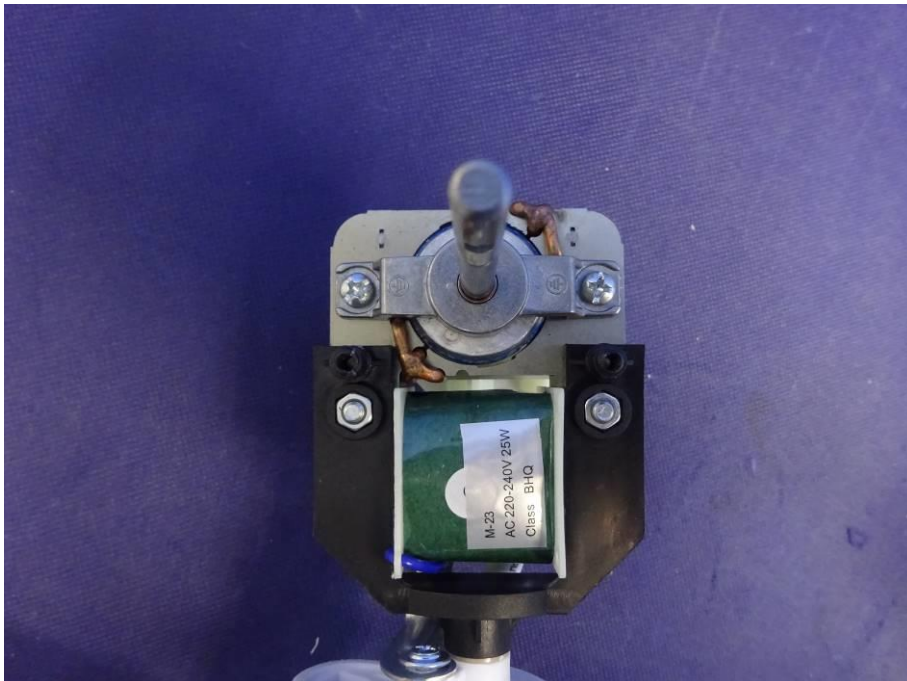
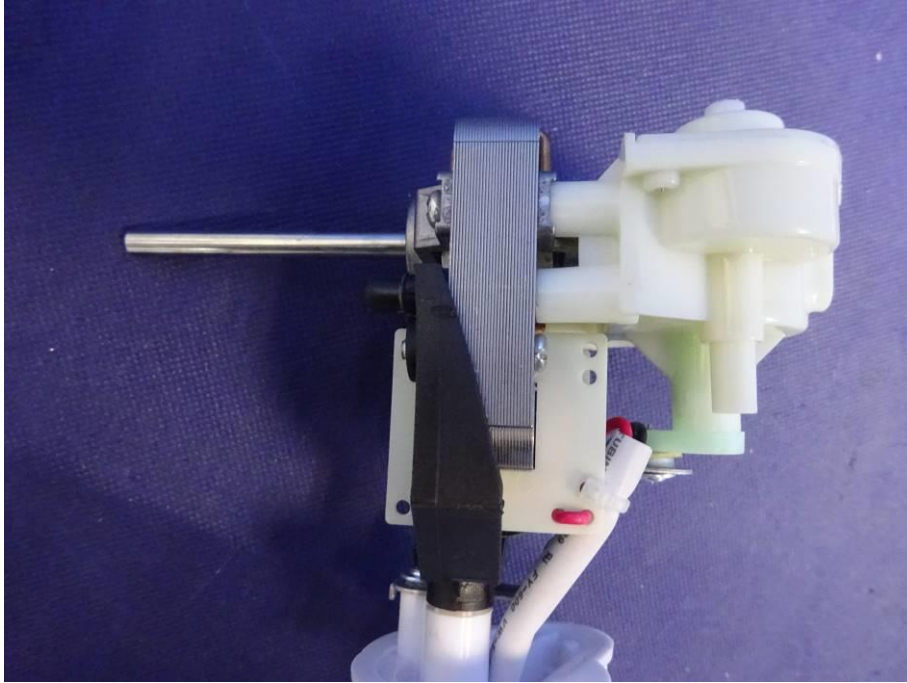
TEST REPORT N°: ASJY-EGZ-P22030077-1-R1





**BUREAU
VERITAS**

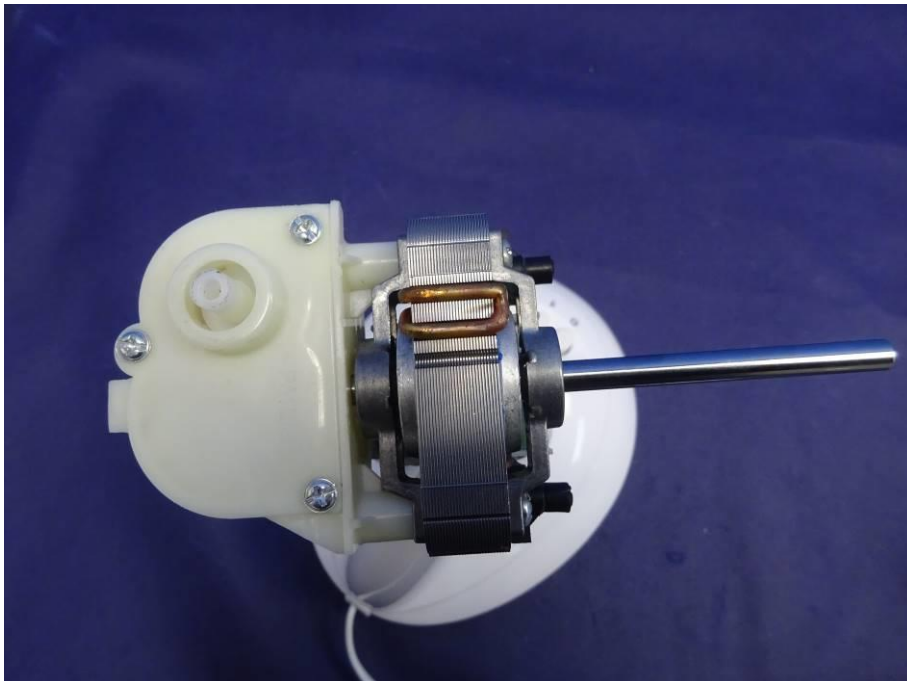
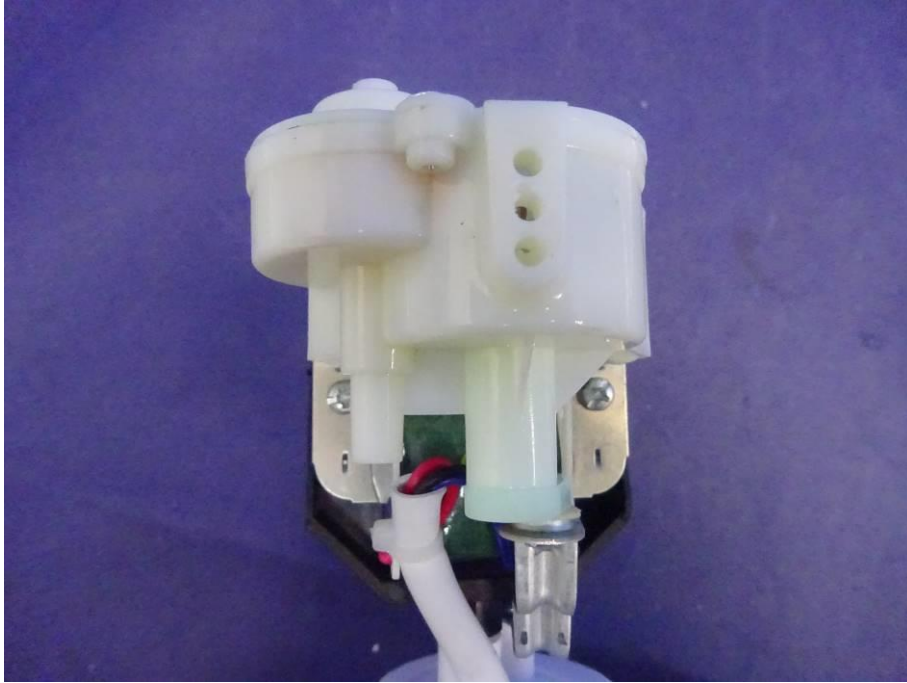
TEST REPORT N°: ASJY-EGZ-P22030077-1-R1





**BUREAU
VERITAS**

TEST REPORT N°: ASJY-EGZ-P22030077-1-R1





**BUREAU
VERITAS**

TEST REPORT N°: ASJY-EGZ-P22030077-1-R1

Model: YF-S71606-6





**BUREAU
VERITAS**

TEST REPORT N°: ASJY-EGZ-P22030077-1-R1





**BUREAU
VERITAS**

TEST REPORT N°: ASJY-EGZ-P22030077-1-R1





**BUREAU
VERITAS**

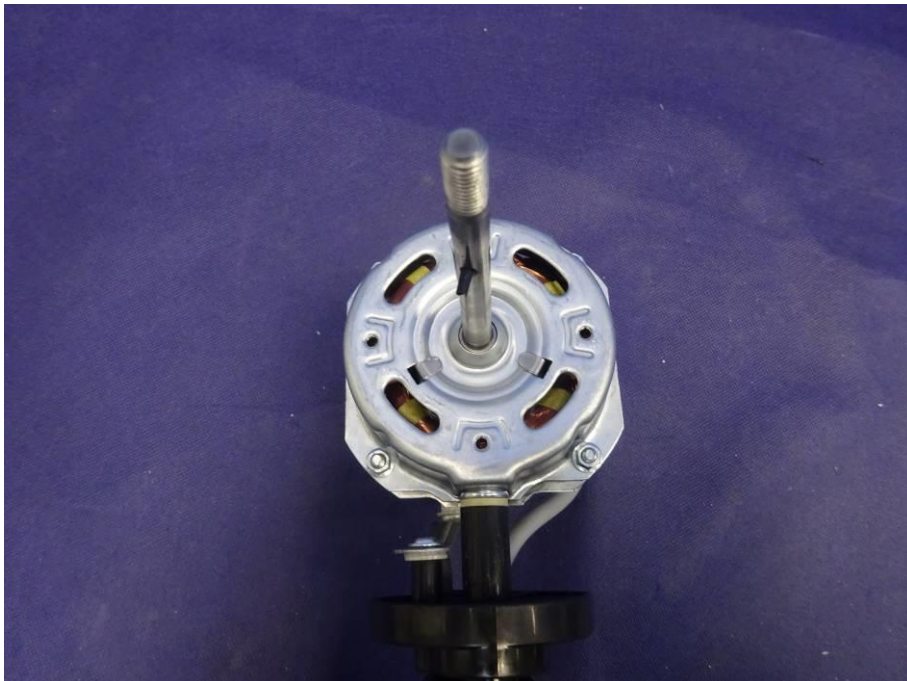
TEST REPORT N°: ASJY-EGZ-P22030077-1-R1





**BUREAU
VERITAS**

TEST REPORT N°: ASJY-EGZ-P22030077-1-R1





**BUREAU
VERITAS**

TEST REPORT N°: ASJY-EGZ-P22030077-1-R1





**BUREAU
VERITAS**

TEST REPORT N°: ASJY-EGZ-P22030077-1-R1





**BUREAU
VERITAS**

TEST REPORT N°: ASJY-EGZ-P22030077-1-R1

Model: YF-ST1628-6





**BUREAU
VERITAS**

TEST REPORT N°: ASJY-EGZ-P22030077-1-R1





**BUREAU
VERITAS**

TEST REPORT N°: ASJY-EGZ-P22030077-1-R1





**BUREAU
VERITAS**

TEST REPORT N°: ASJY-EGZ-P22030077-1-R1





**BUREAU
VERITAS**

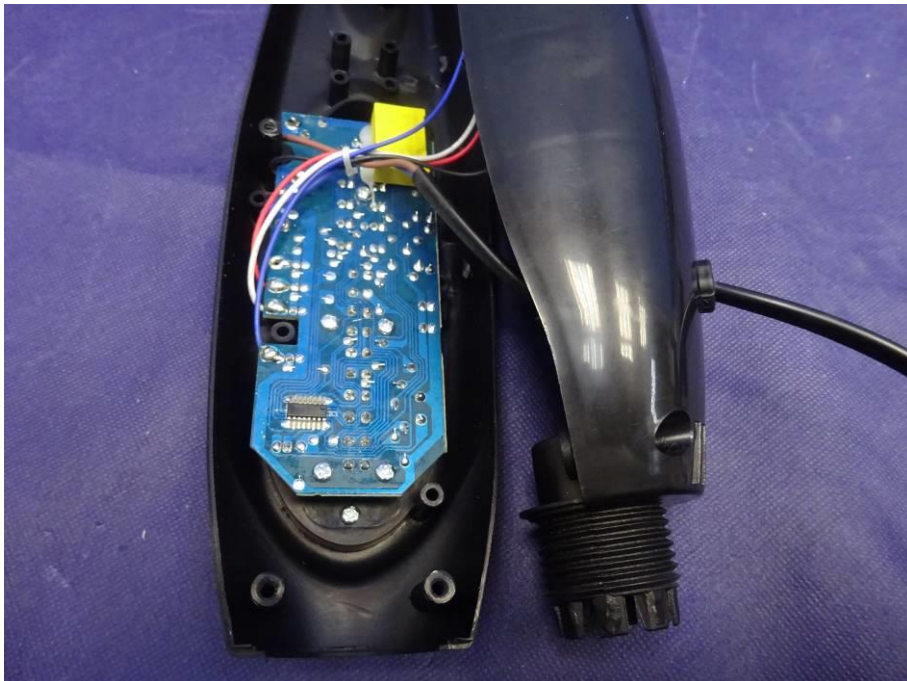
TEST REPORT N°: ASJY-EGZ-P22030077-1-R1





**BUREAU
VERITAS**

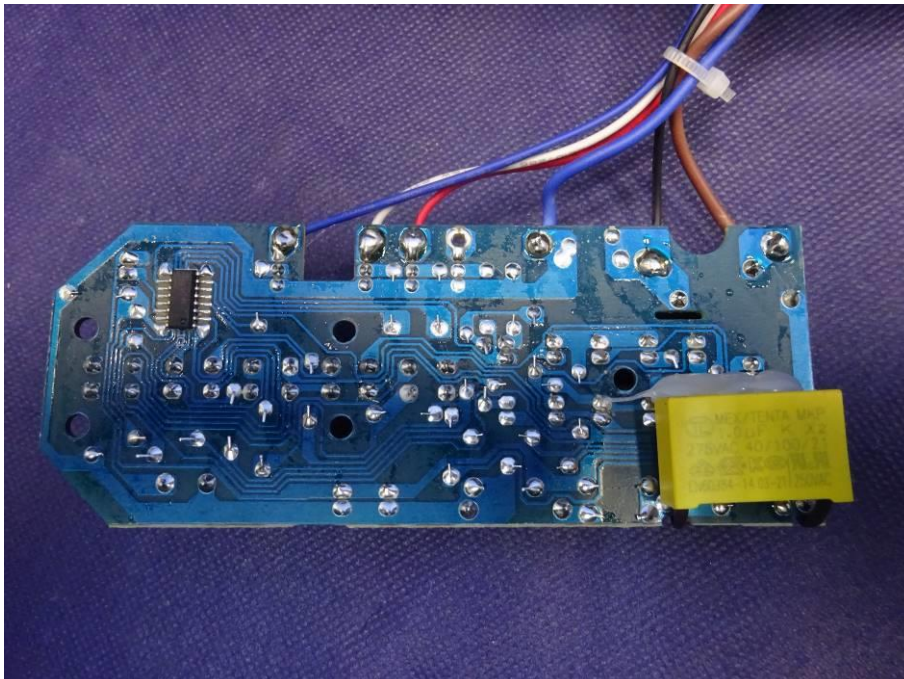
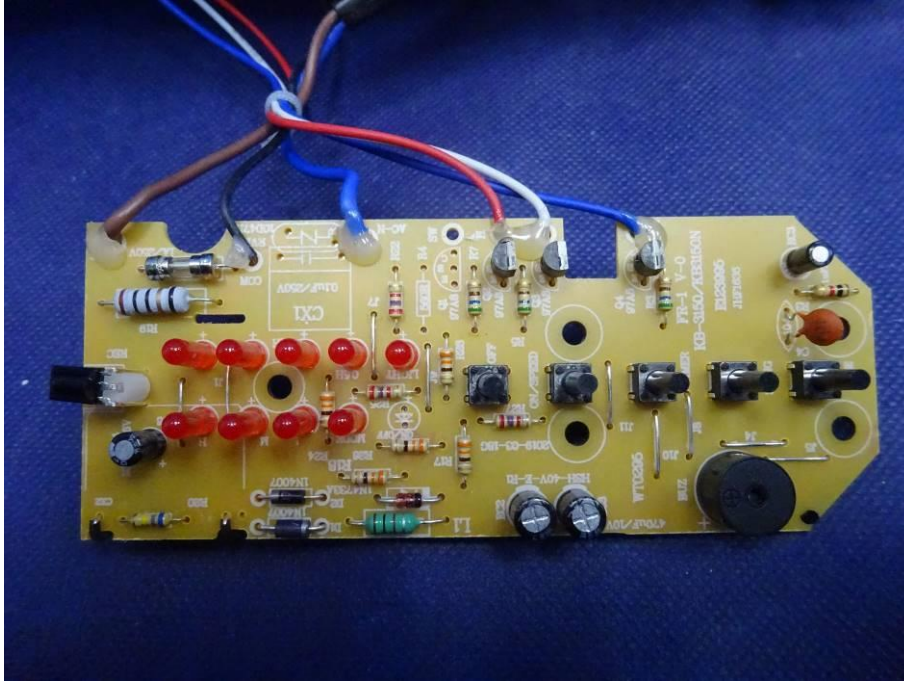
TEST REPORT N°: ASJY-EGZ-P22030077-1-R1





**BUREAU
VERITAS**

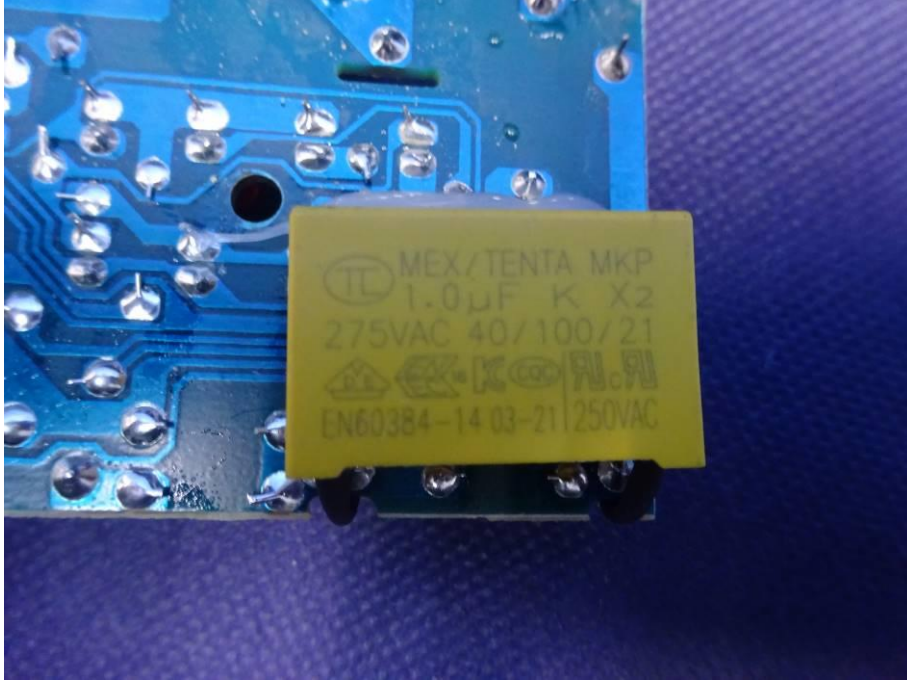
TEST REPORT N°: ASJY-EGZ-P22030077-1-R1





**BUREAU
VERITAS**

TEST REPORT N°: ASJY-EGZ-P22030077-1-R1



---END---